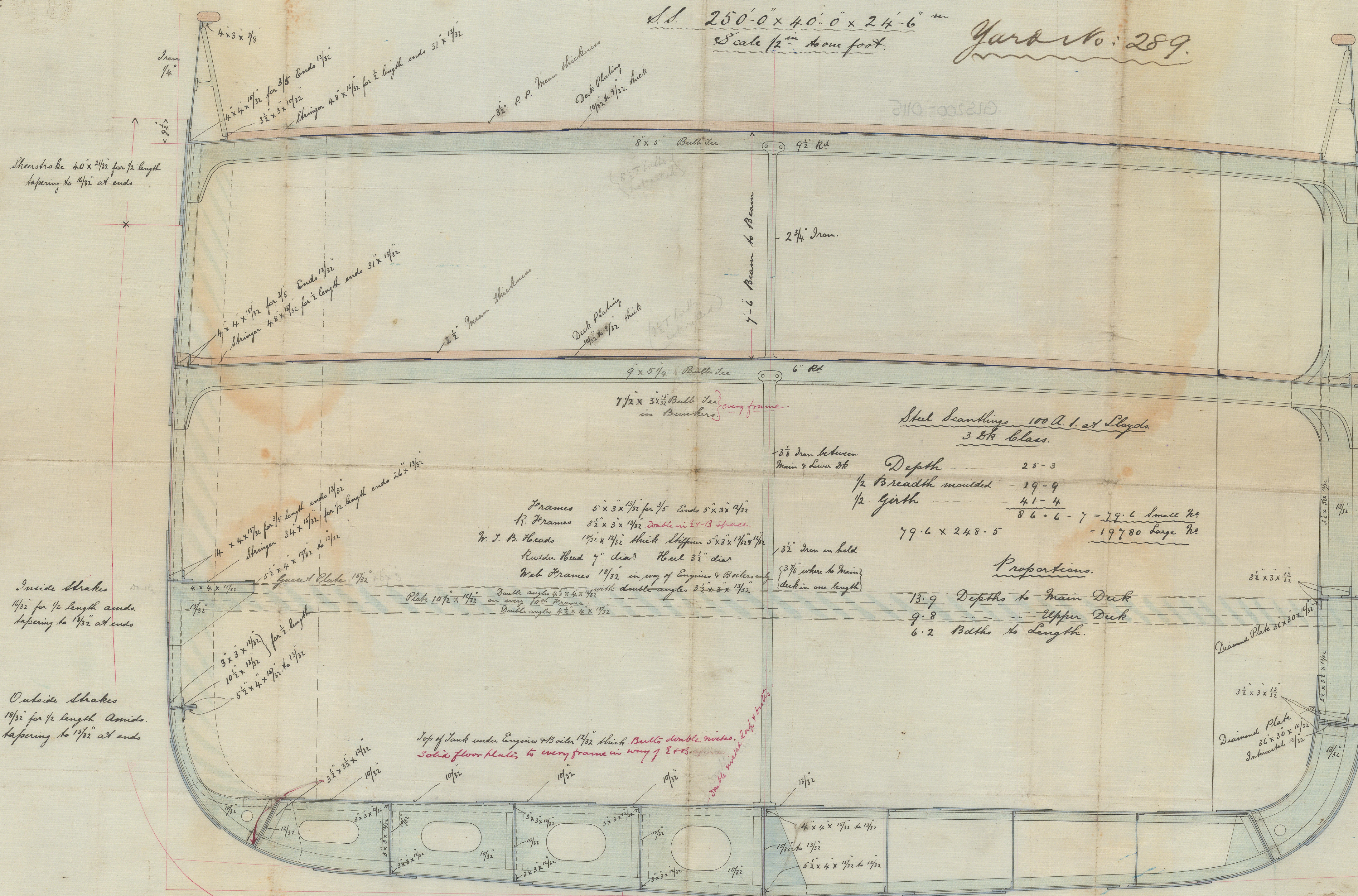


Ltr. to Jls.
 28/2/84.
 15/4/84

S.S. 250'-0" x 40'-0" x 24'-6" m
Scale 1/2" = 100 feet.

Yard No. 289.



Butt shape of shell to be $\frac{1}{16}$ " thicker than plates they connect
and bevel rivets for four strakes of plating around
the bilges for $\frac{1}{2}$ length amidships. *Sheer to keel & main & upper*
Charter deck stringer plate strake $\frac{1}{16}$ " thicker than plates they connect
& bevel rivets for $\frac{1}{2}$ length amidships
Keel Plate strake $\frac{1}{16}$ " thicker than plates they connect
& bevel rivets to be in one piece between
overlaps of plating

27/3/84

19/2/84
R. G. M.

© 2021
Lloyd's Register
Foundation

GLS200-0115

Wackay Bennett
No 6422

GLS200-0115



© 2021

Lloyd's Register
Foundation