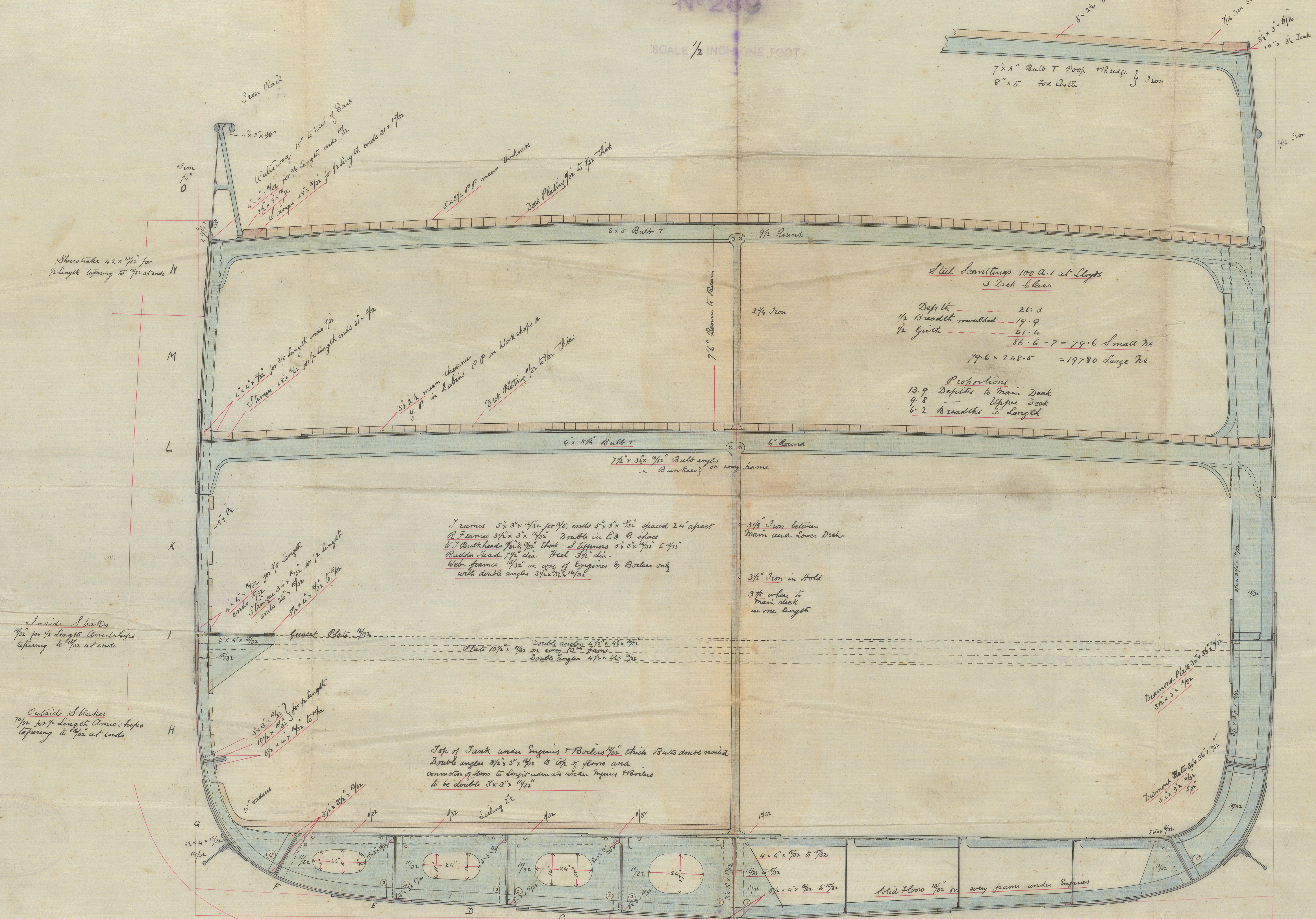


S. S. Mackay Bennett Glasgow Report No 6422.

MIDSHIP SECTION
No 289

Scantlings above ^{have} approved by Committee, but vessel to be built to these scantlings.

SCALE 1/2 INCH ONE FOOT.



Butt Straps of Shell to be 1/2" thicker than plates they connect
and to be riveted for four strakes of plating around
the butts for 1/2 length Amidships. Shearstrake & main & upper decks
Stanchion Plates 1/2" thicker than plates they connect and to be riveted
for 1/2 length Amidships.
Rail Plate Straps 1/2" thicker than plates they connect and to be riveted
to be in one piece between overlaps of plating.



JOHN ELLER & CO.
Shipbuilders and Engineers
GLASGOW.