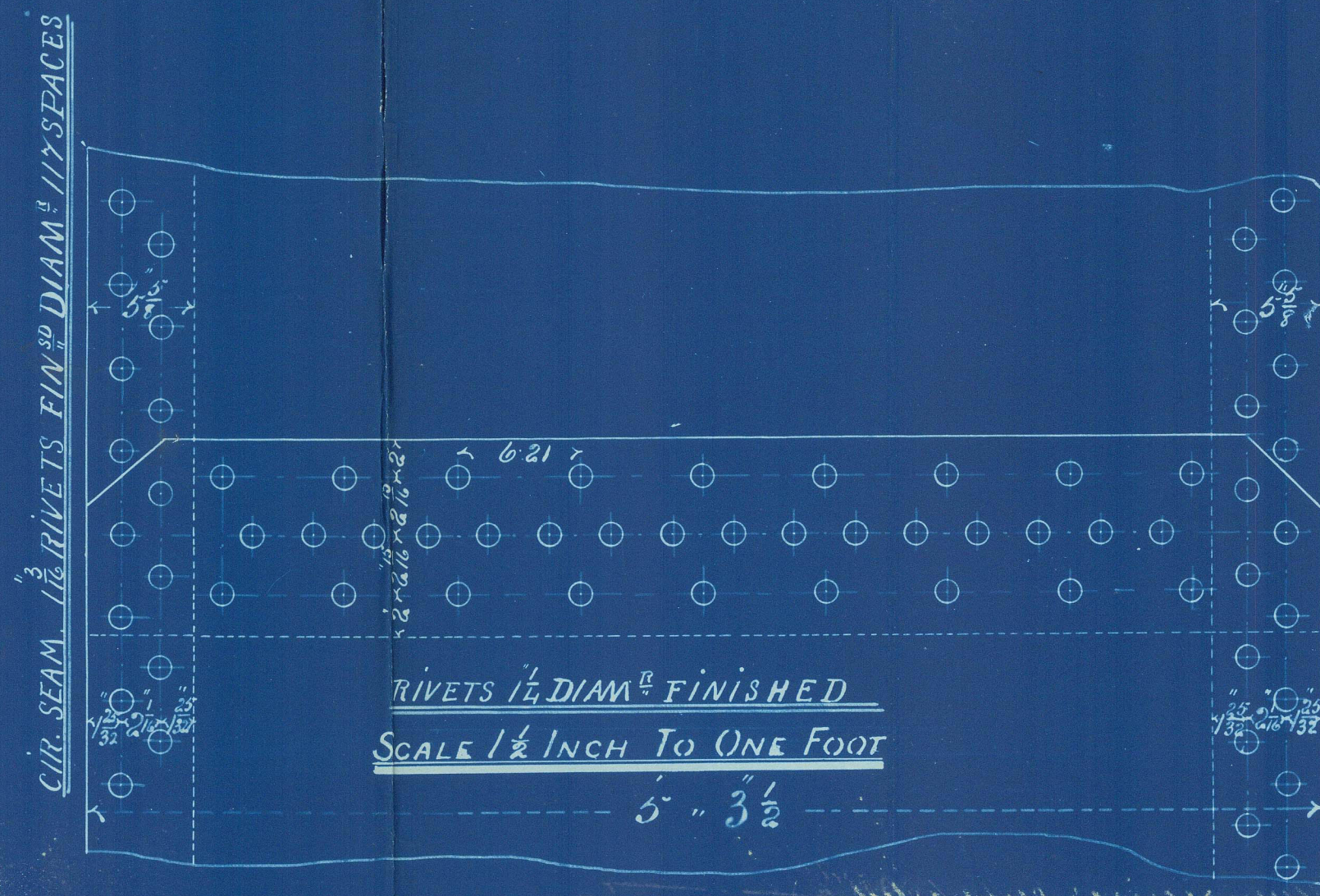


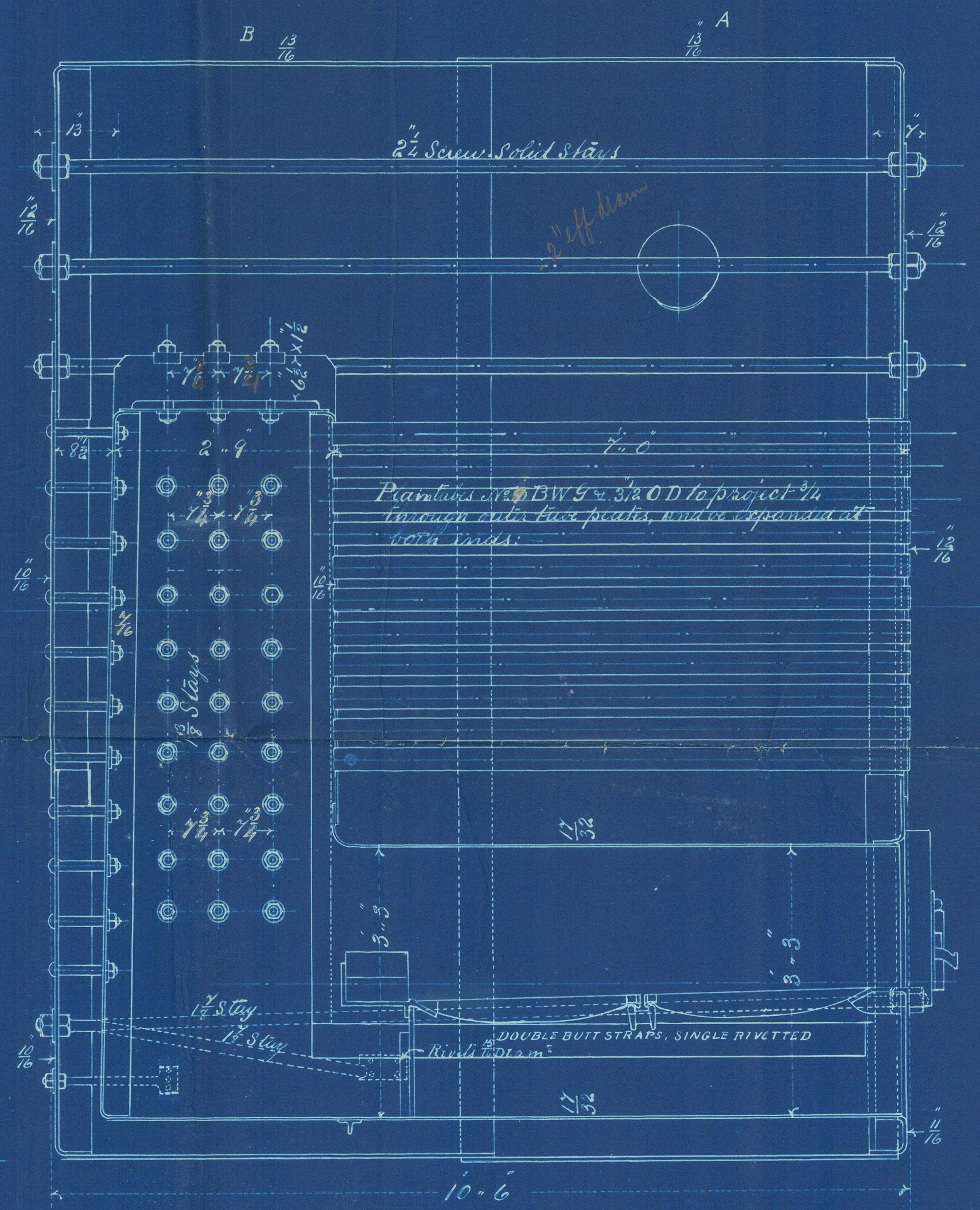
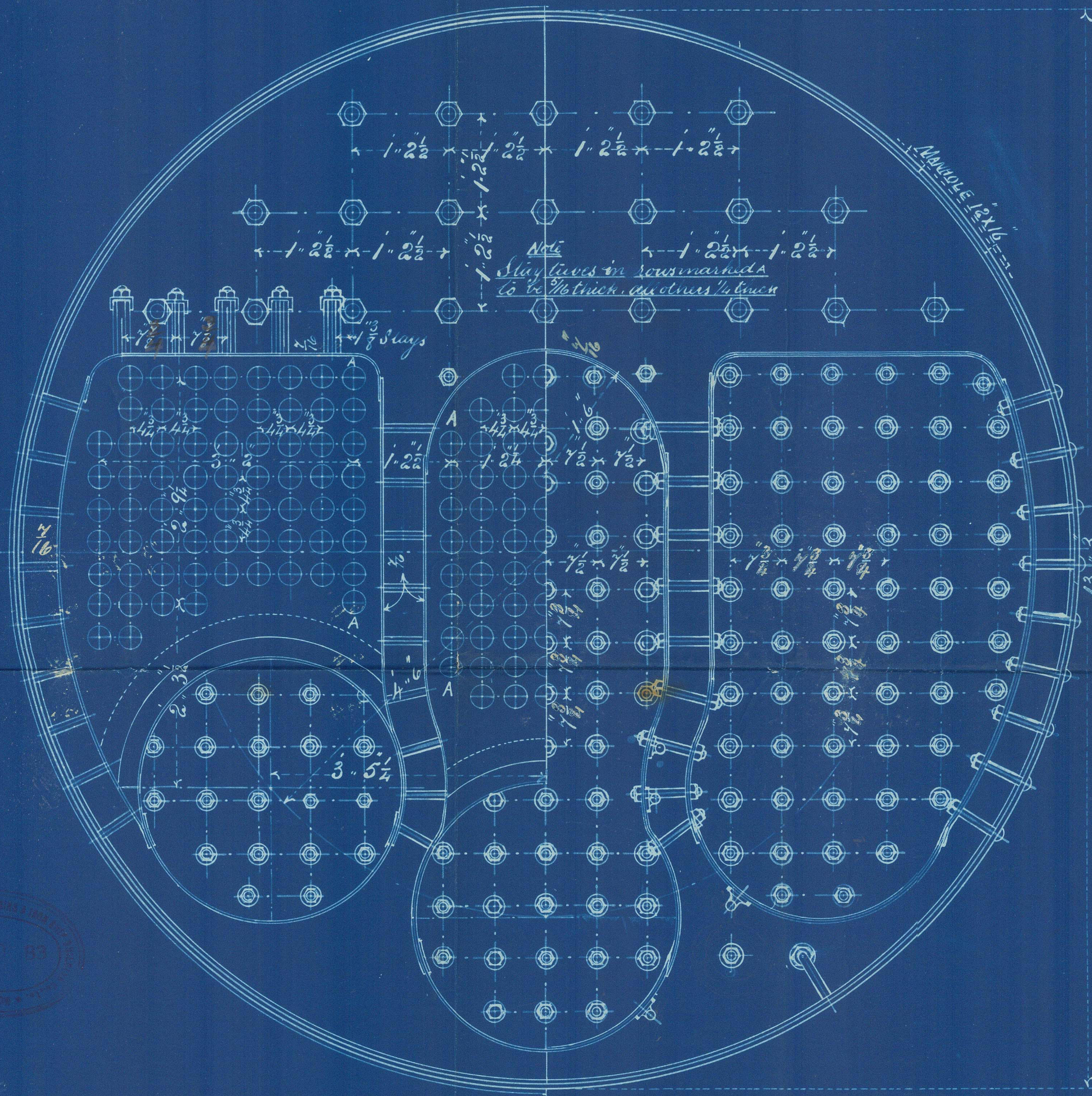
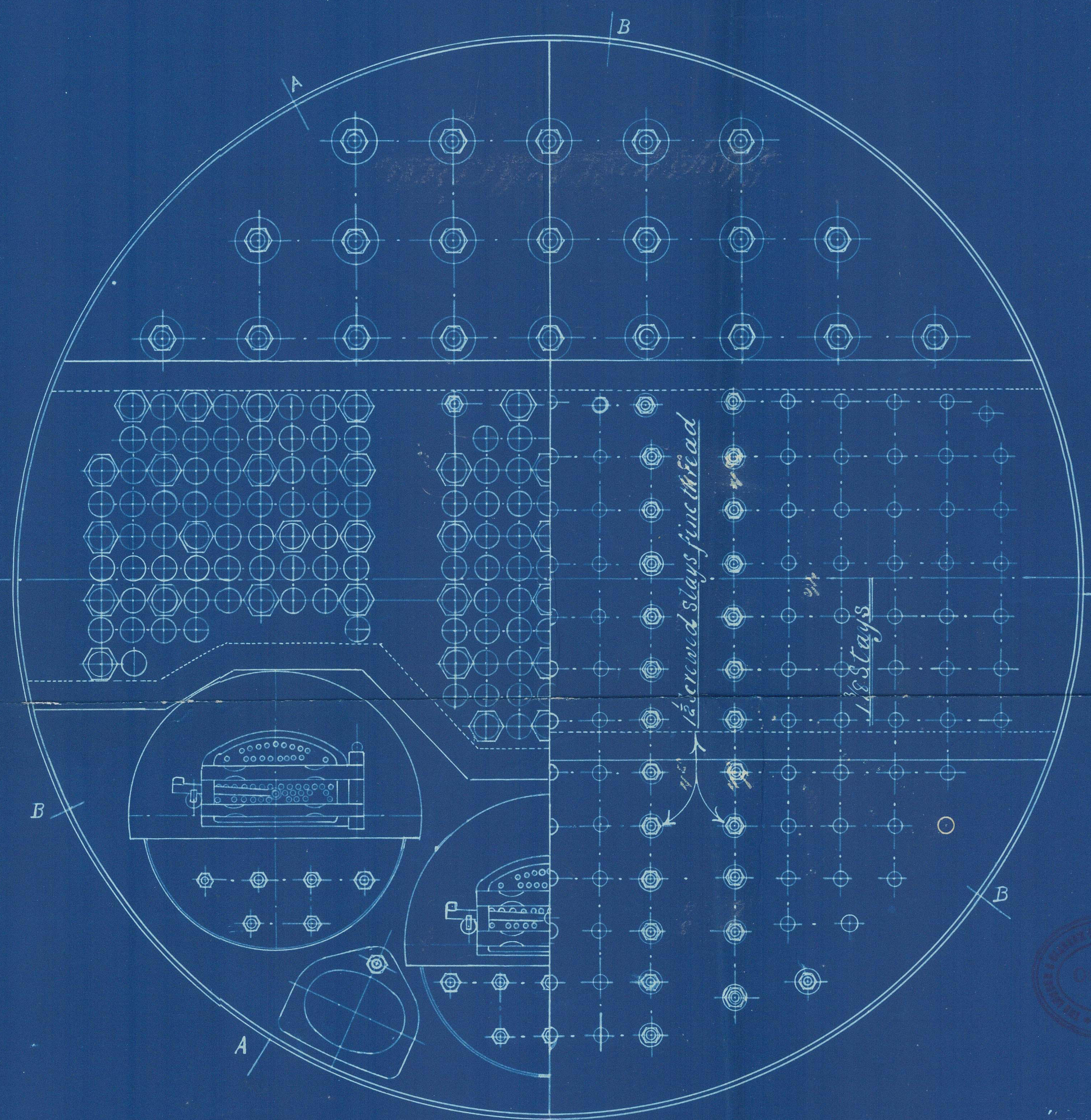
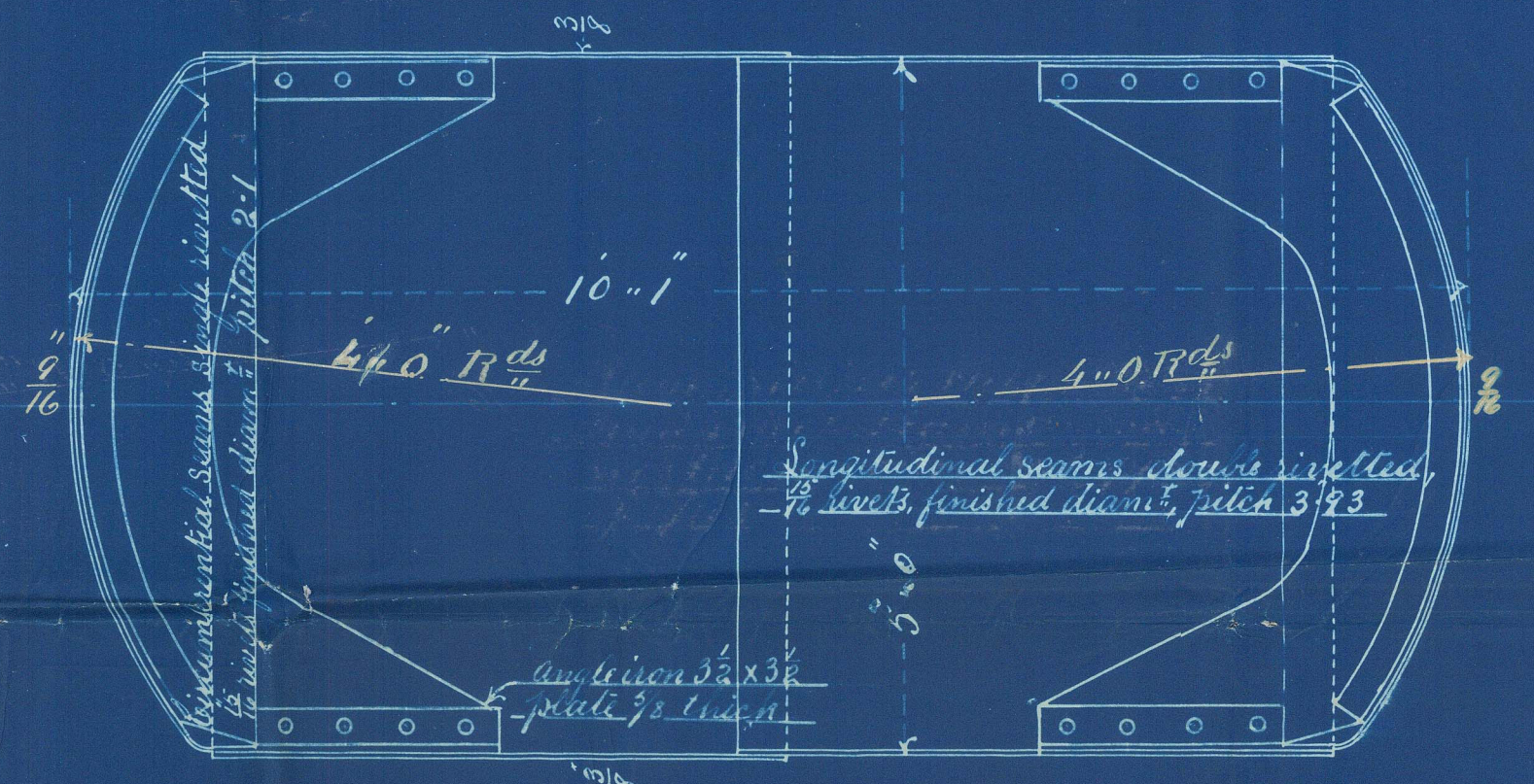
*S.S. "Kii Maru" Glasgow Report No. 6595
S.S. "Higo Maru" do do 6660*

*Steam receiver supported on
main deck beams & con-
nected to boiler by Copper
pipes*



*RIVETS 1/2" DIAM^{rs} FINISHED
SCALE 1/2" INCH TO ONE FOOT
5' 3 1/2"*

NO. OFF



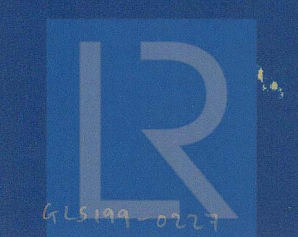
LONDON & GLASGOW
ENGINEERING & IRON SHIP BUILDING CO.
(LIMITED)
GLASGOW & BOVAN

STEEL BOILER *Stays and ties iron*
WORKING PRESSURE = 90 LBS. PER SQ. INCH

NO. 241-42

SCALE 3/4" INCH TO ONE FOOT

mm 22/1/1903



Register
of Shipping
Foundation

Boiler No 24243

Lt. R.

Permanently



© 2021

Lloyd's Register
Foundation

615199-0227