

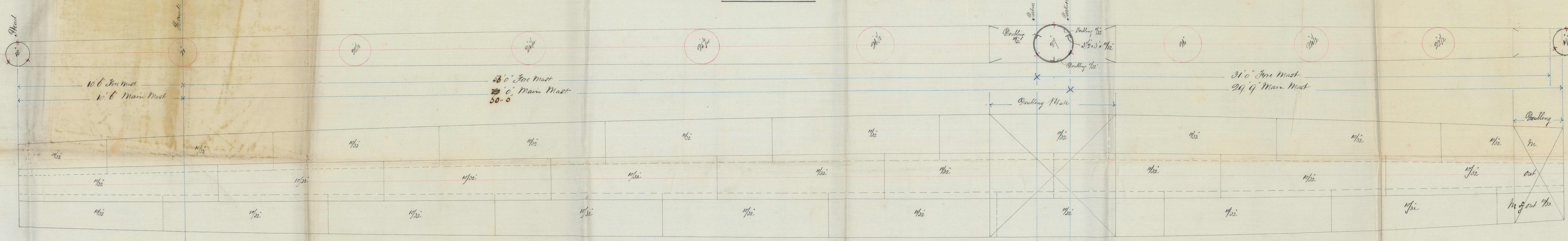
STEEL MASTS & YARDS

NO. 2801 & 2

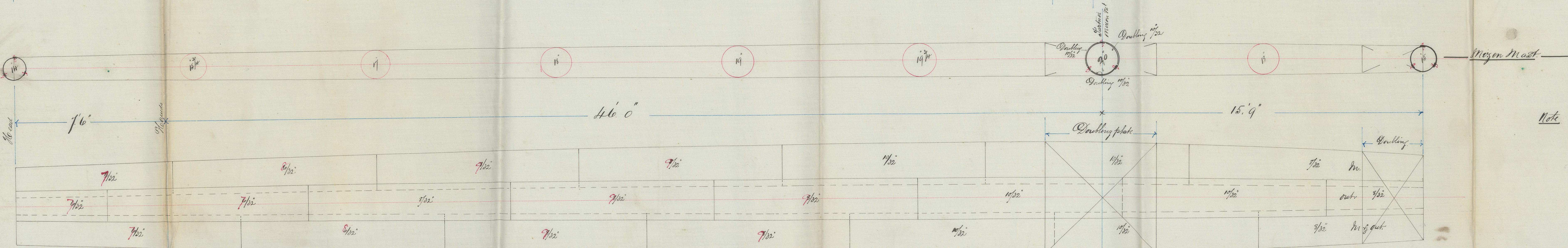
SCALE 1/2 INCH ONE FOOT.

S.S. "Kangaroo" Glasgow Report No. 6291.
S.S. "Avon" do do 6324.
S.S. "Kangaroo" do do 6344.

Dr. to Cr.
14/1/83

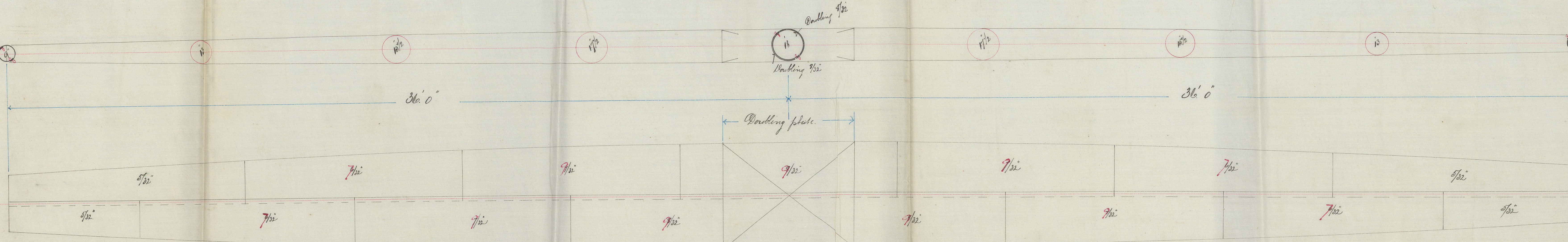


Note: Seams all double rivets. The Butt Straps below the Mast partners. Double rivets. The Butt Straps in all cases to be the same as the plates they connect. The angles in Centre of each plate, forming the Mast length of the Masts. Seams Double rivets 12" & 3 1/2" from Angles 33" & 3 1/2" from. Straps. Full rivets also mast partners. 12" from. Double below 10.



Note: Seams all double rivets. The Butt Straps below the Mast partners. Double rivets. The Butt Straps in all cases to be the same as the plates they connect. The angles in Centre of each plate, forming the Mast length of the Masts. Seams Double rivets 12" & 3 1/2" from Angles 33" & 3 1/2" from. Straps. Full rivets also mast partners. 12" from. Double below 9.

JOHN ELDER & CO.
Shipbuilders and Engineers
GLASGOW.



Note: Seams all double rivets. The Butt Straps below the Mast partners. Double rivets. The Butt Straps in all cases to be the same as the plates they connect. The angles in Centre of each plate, forming the Mast length of the Masts. Seams Double rivets 12" & 3 1/2" from Angles 33" & 3 1/2" from. Straps. Full rivets also mast partners. 12" from. Double below 9.

14/1/83