

RECEIVED 8th MAY 1882  
RECEIVED 11th DEC. 82  
RECEIVED 1st MAR. 83

# MIDSHIP SECTION

S S N° 317-18

S.S. "Dunbar Castle" Glasgow Report N° 6248 -  
S.S. "Methven Castle" do " 6314  
Equipment

5.1.82  
24/1/82  
17/3/83.

Note. these details were contracted for in November 1881  
SCALE 1/2 INCH TO A FOOT  
Orders for Special Survey  
N° 1693-1694-6 Decr 1881.

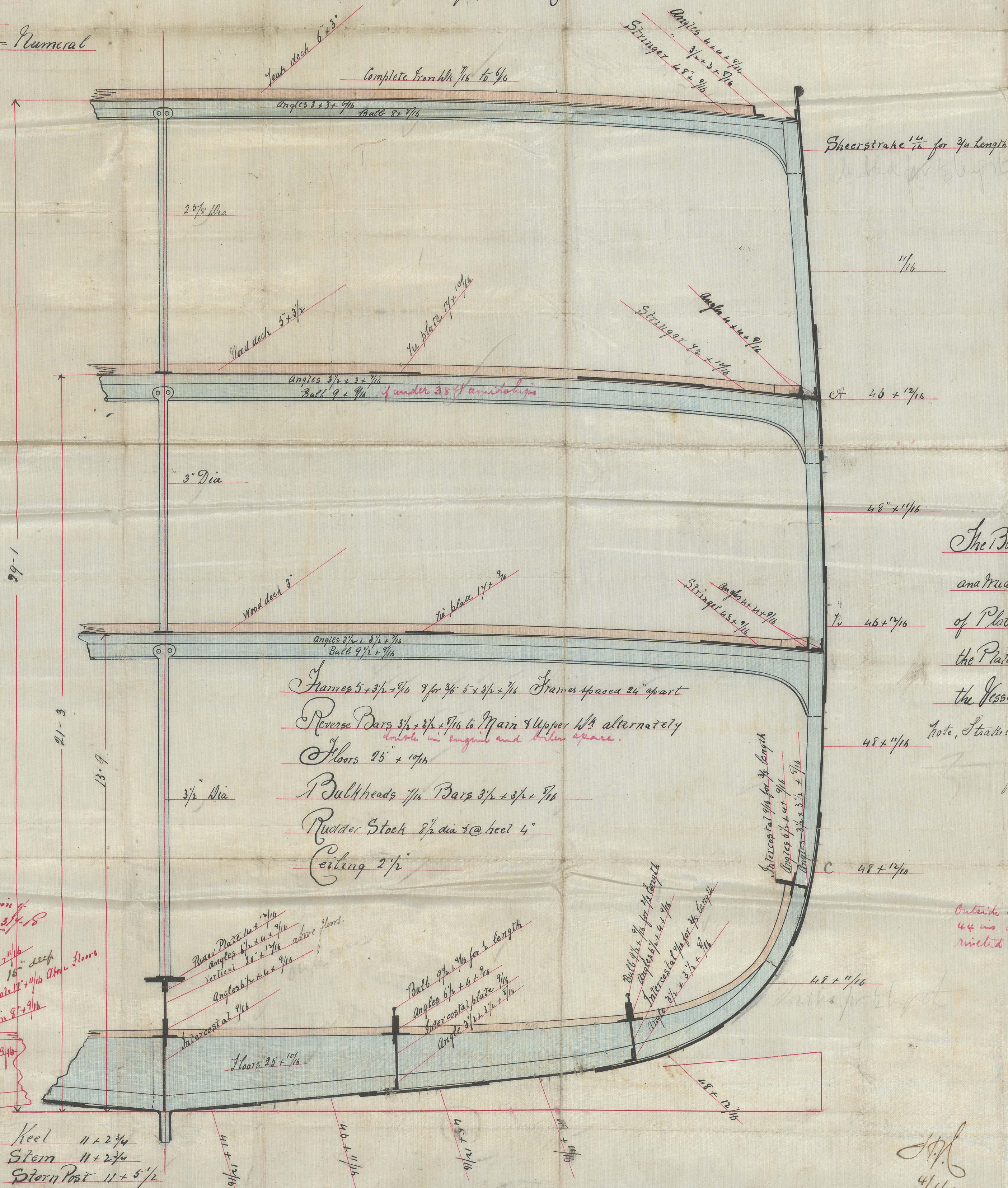
To class 100 at Lloyd's.  
As a three decked Steamer, with a Supplemental Fore-castle

Length  $333.25 + 84.53 = 28168.82 = \text{Plating Numeral}$   
 $333.25 + 91.53 = 30502.37$   
Add  $1/15 = 2033.49$   
 $32535.86 = \text{Equipment Numeral}$

3 Bower Anchors ex Stock 104 Cwt Coll Weights  
1 Stream " 11 1/4 "  
1 Keage " 5 1/2 "  
1 " " 2 3/4 "  
300 Fathoms of 1 15/16 Stud Chain  
90 " " 1 3/16 Stream  
100 " " 12" Towline  
90 " " 10" Warp  
90 " " 8 1/2 "

Lloyd's Length 333.25  
Half Breadth 19.12  
Girth 43.33  
Depth 29.08  
91.53  
7.00  
84.53 = Numeral

Proportions  
Beams 8.71  
Depth to Upper hls 11.45  
Main 15.68

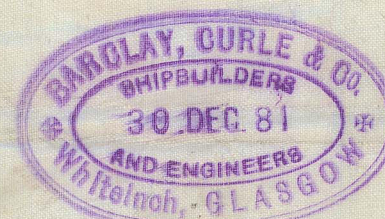


## Note

The Butt Straps of the Sheerstrake Upper and Middle 1/4" Stringer Plates and three Strakes of Plating at Bidge to be 1/8 of an inch thicker than the Plates they connect and to be rivetted for half the Vessel length amidships

Note, Strakes at B.C., to put Shags up to go from frame to frame as lines for 150 ft amidships.

Outside strakes of plating above 44 ins wide to have double rivetted butts.



4/1/82