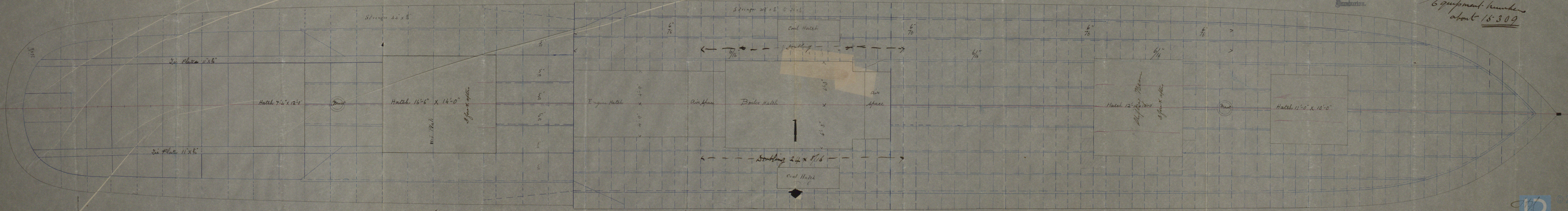
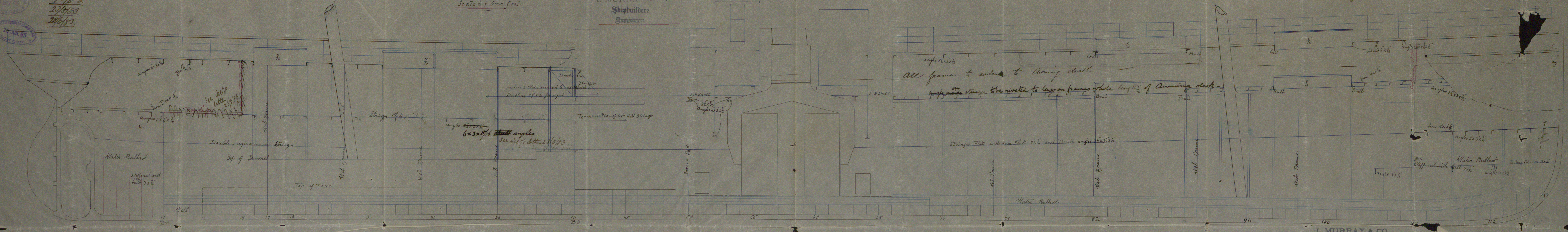


To Mr. G. L. 15/6/83
 23/7/83
 28/8/83
 25 JAN 83
 LLOYD'S REGISTER
 LONDON

Longitudinal Section S.S. No. 114
 Scale 1/4" = One foot

H. MURRAY & CO.
 Shipbuilders
 Dumbarton.

S.S. "Cwari Maru" Glasgow Report No. 6240.



H. MURRAY & CO.
 Shipbuilders
 Dumbarton.

Equipment numbers
 about 15309