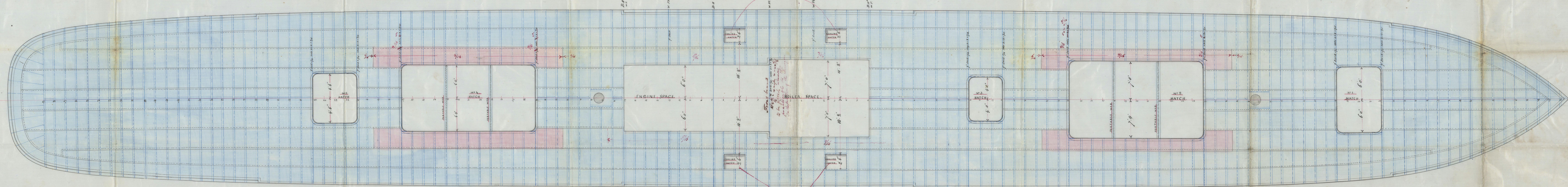


Mr Glasgow 4/9/82.

S. S. Sargasso
Glasgow Report No. 6159.



MAIN DECK PLAN

S. S. N^o 193.

SCALE $\frac{1}{4}$ " = ONE FOOT.

A circular blue ink stamp. The outer ring contains the text "JAMES & GEORGE THOMSON," at the top and "DUMBARTONSHIRE." at the bottom, separated by small crosses. The inner circle contains the text "ENGINEERS AND" at the top, "IRON SHIP BUILDERS," in the middle, and "CLYDE BANK," at the bottom.