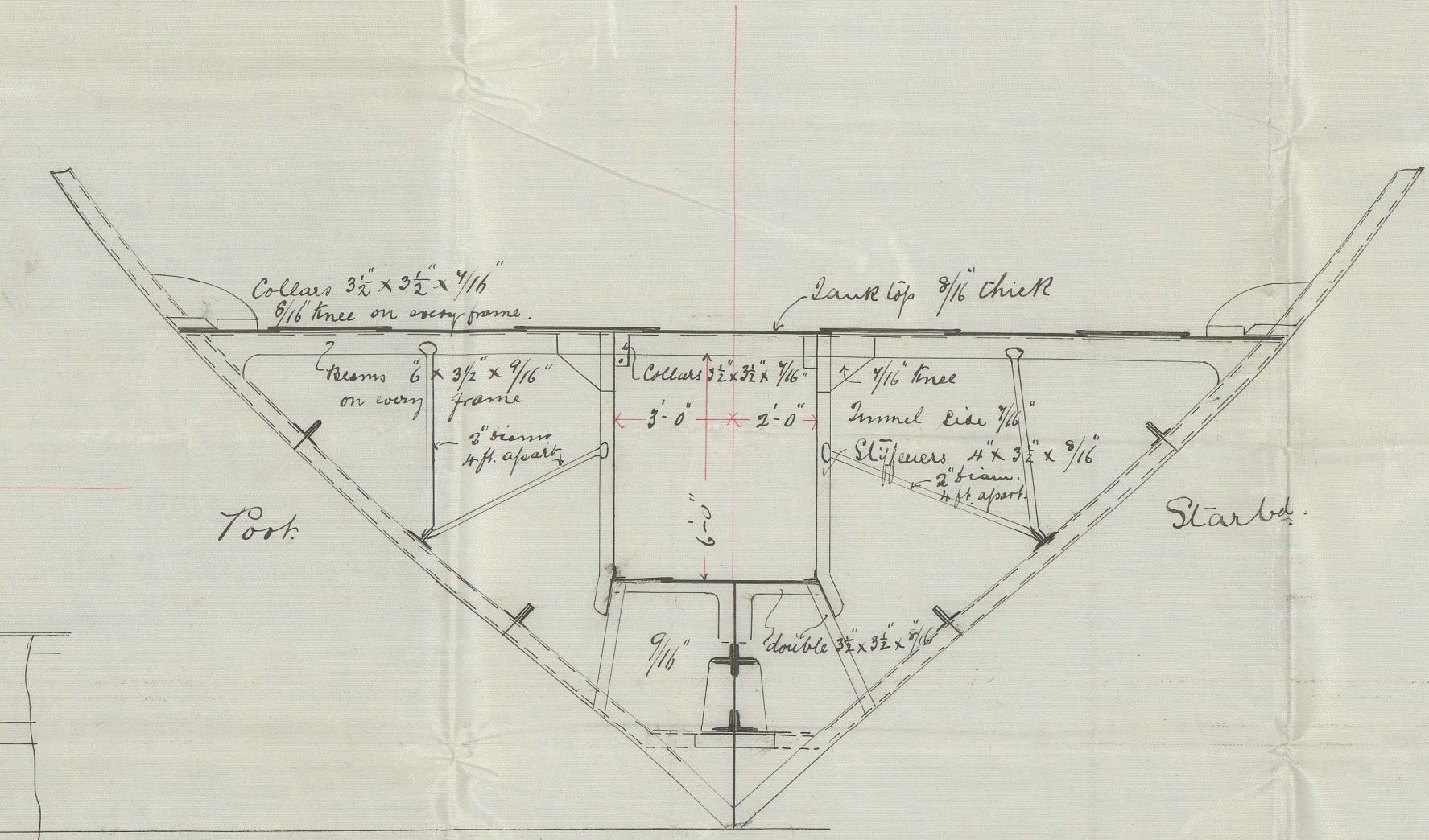
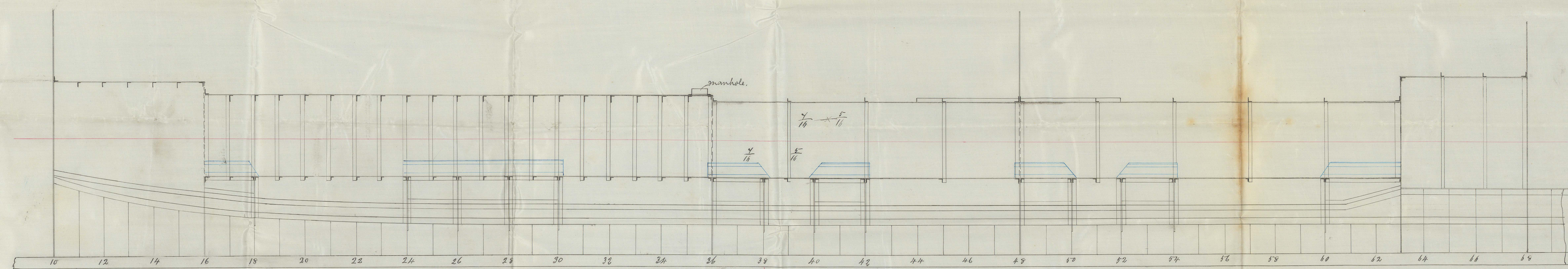
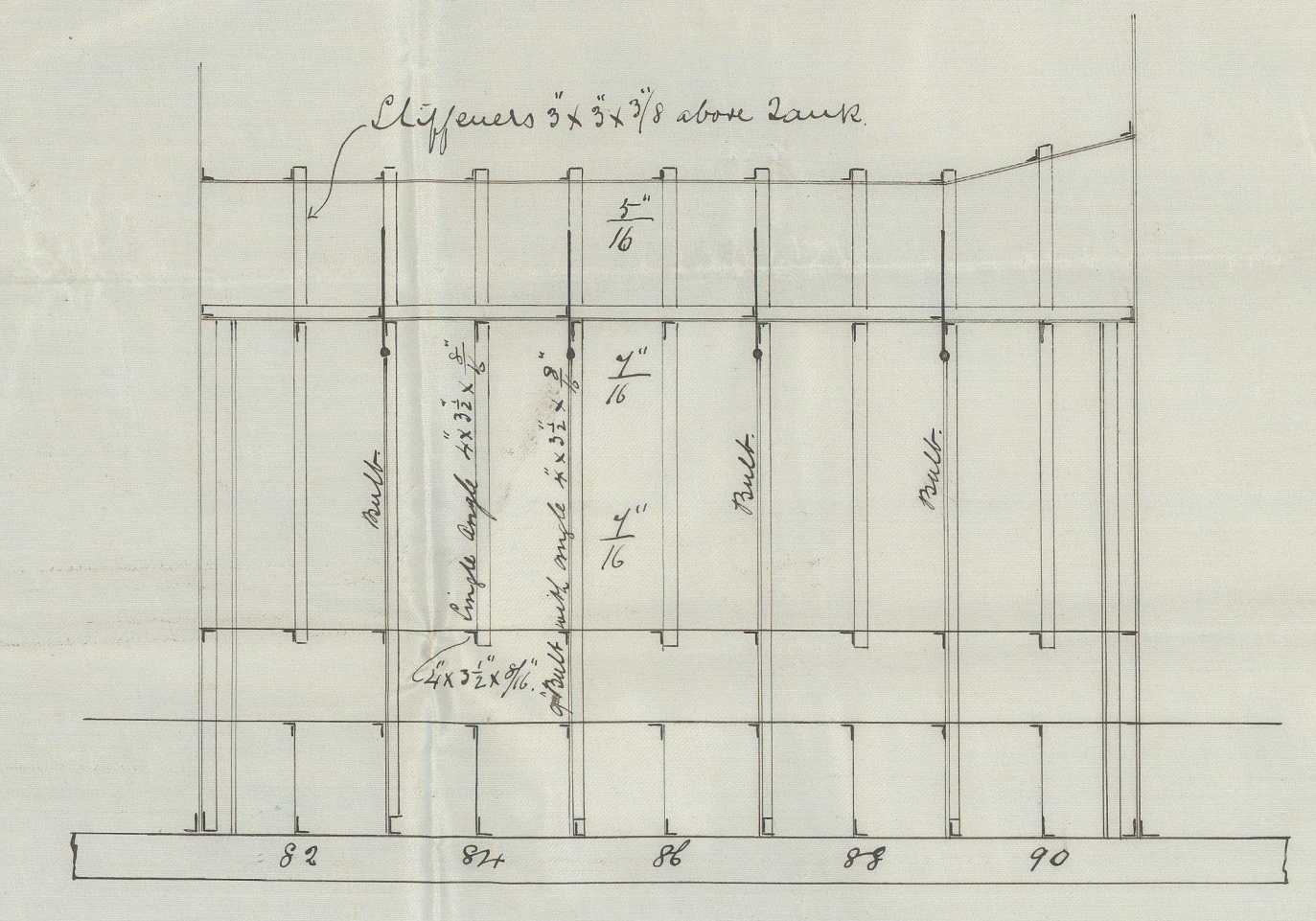


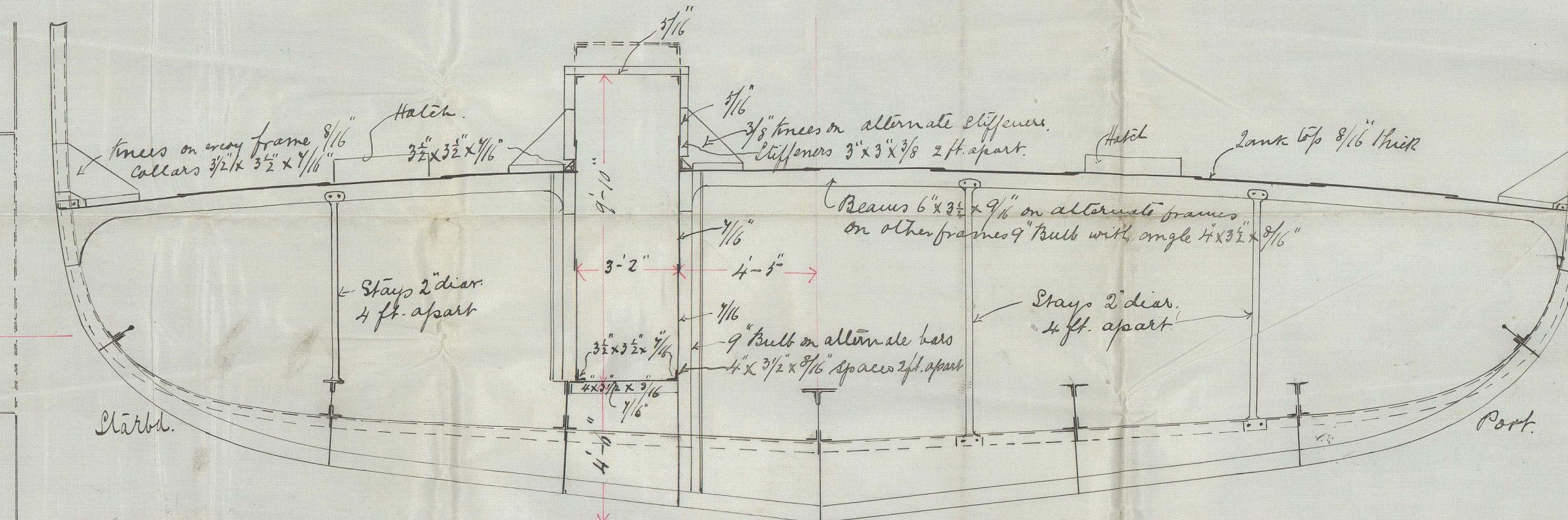
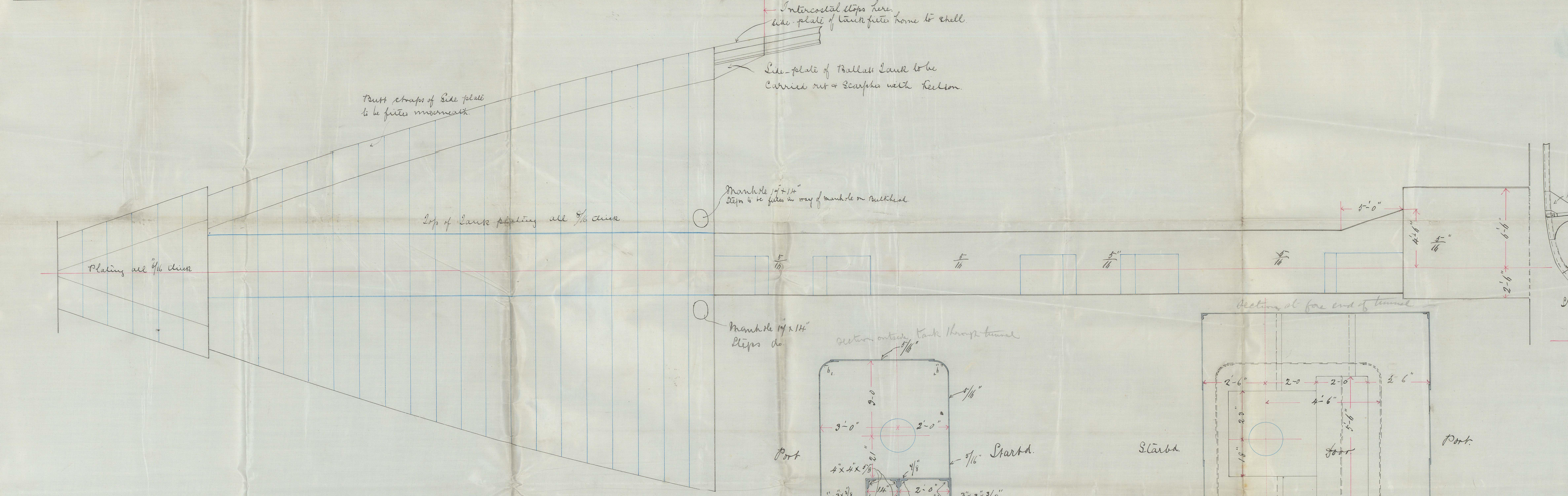
S.S. "Hawarden Castle" - Glasgow Report No. 6065 -
 S.S. "Norham Castle" - do - 6112 -



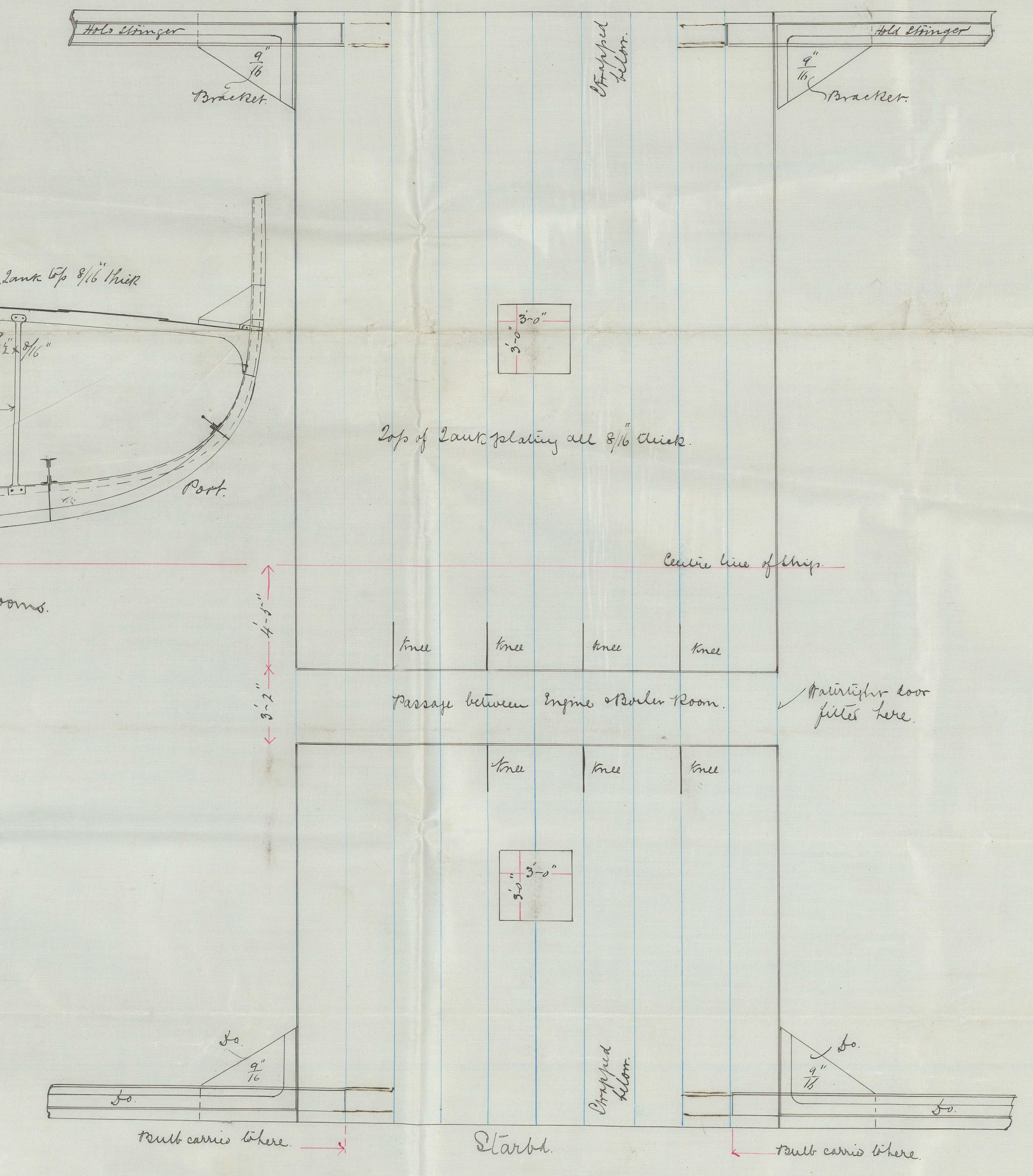
Section thro' ballast tank at 28 frame



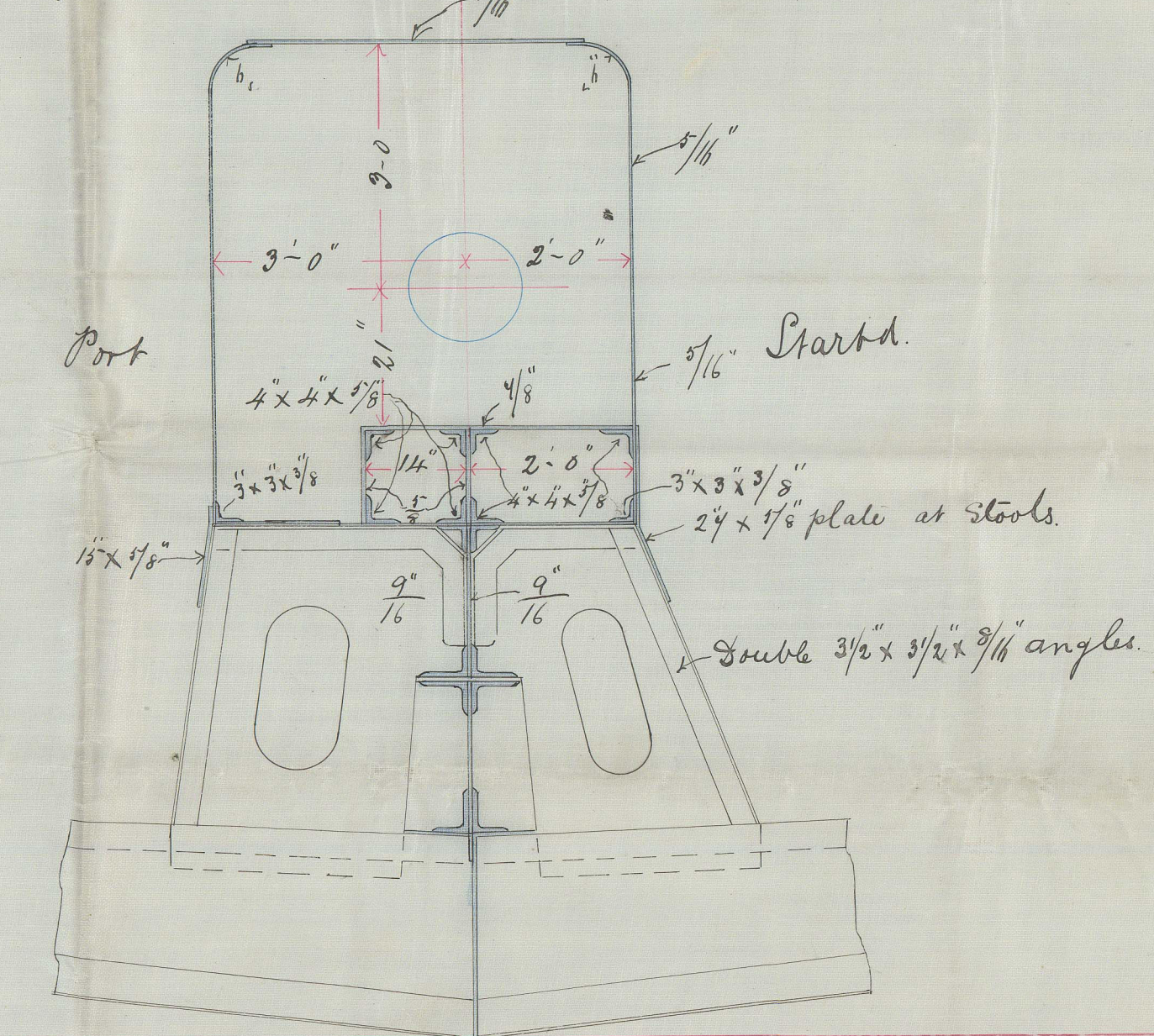
Port



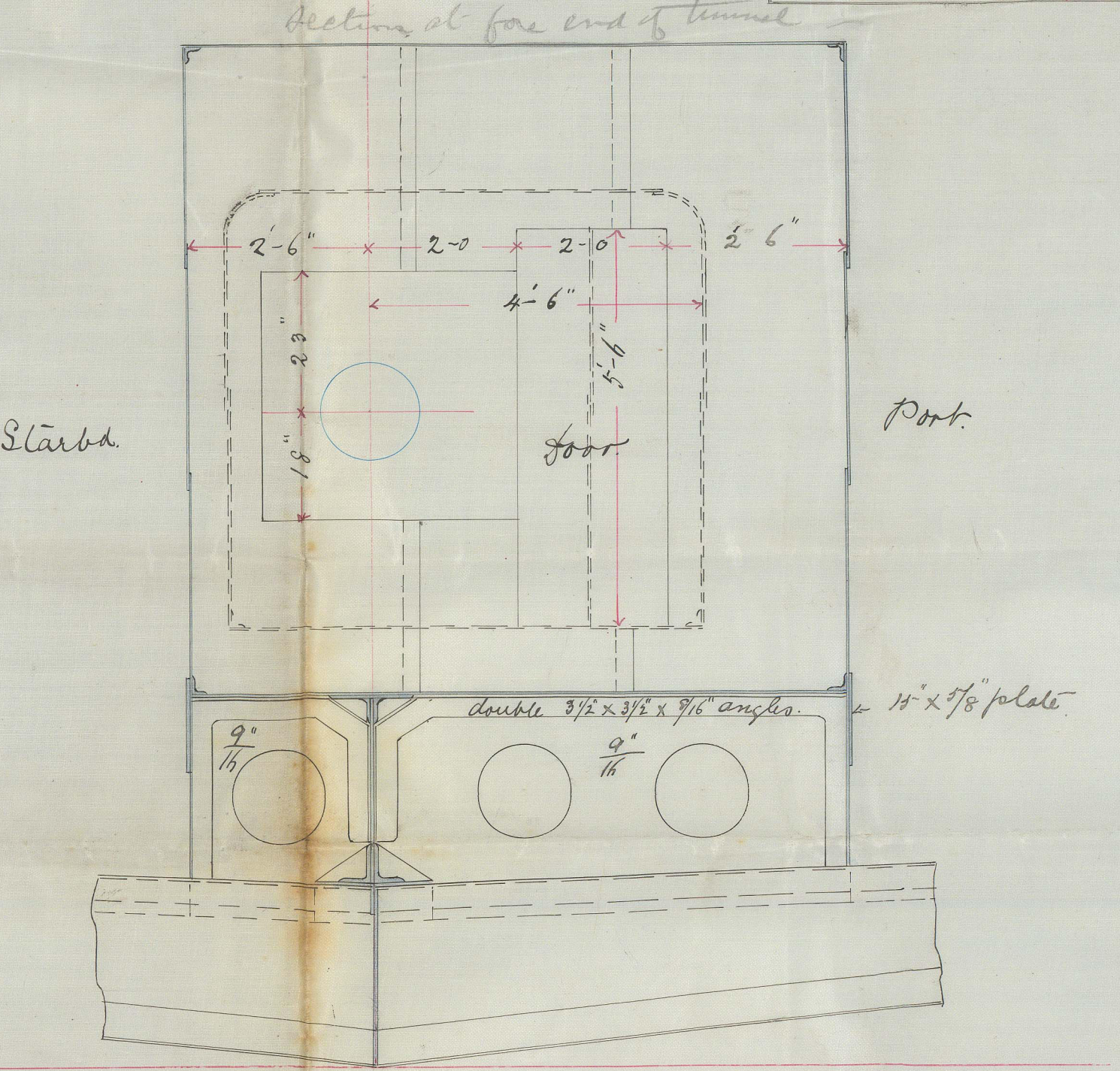
Section thro' ballast tank between engine & boiler rooms



Nos. 269 & 40
 Inner & Ballast Tank Plan.
 Scale 1/4" = 1 foot.



Scale 1/2" = 1 foot



Scale 1/2" = 1 foot

SHIP DRAWING OFFICE
 4/11/02
 A.A.
 FAIRFIELD

JOHN ELDER & CO.,
 Shipbuilders and Engineers.
 GLASGOW.

19/6
 9/4/02