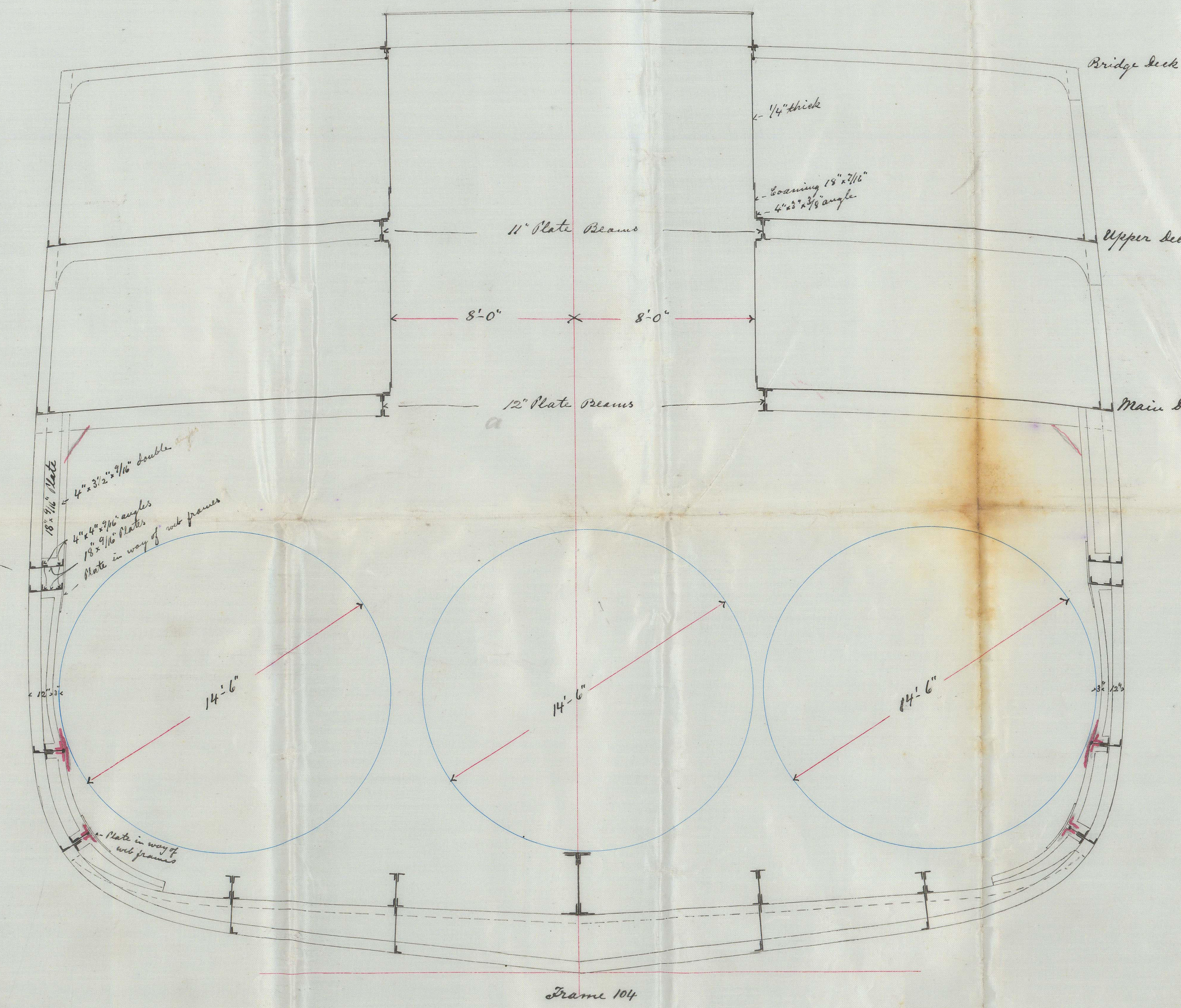
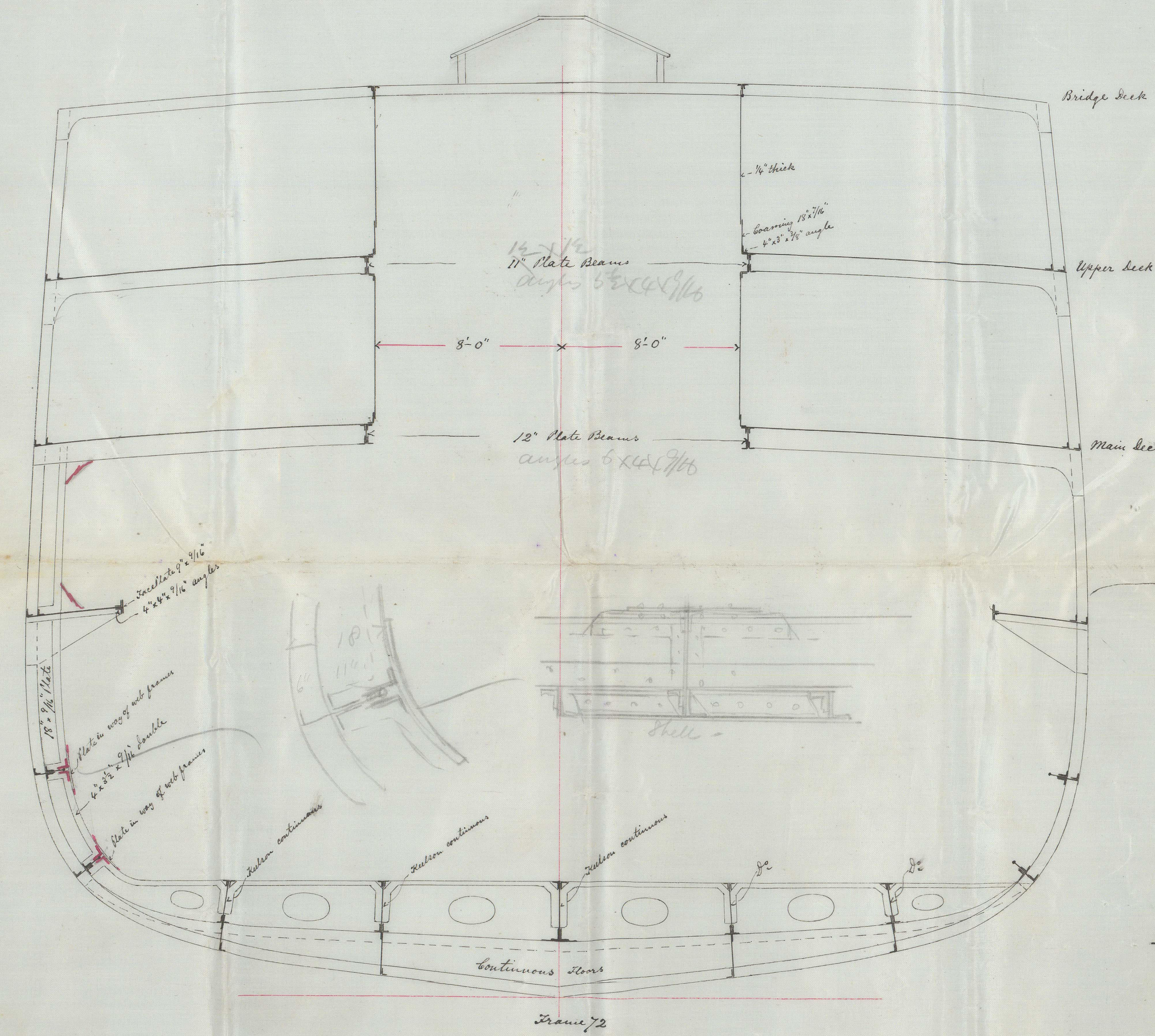


S.S. "Howarden Castle" Glasgow Report No. 6065.
 S.S. "Norham Castle" do do 6113.

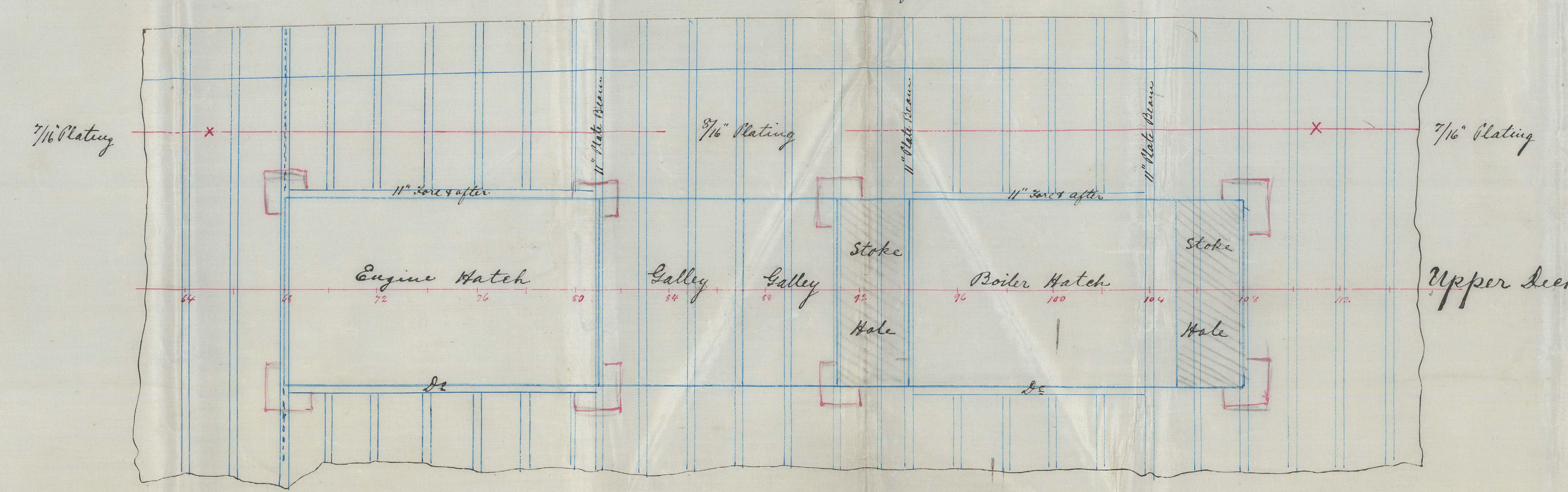
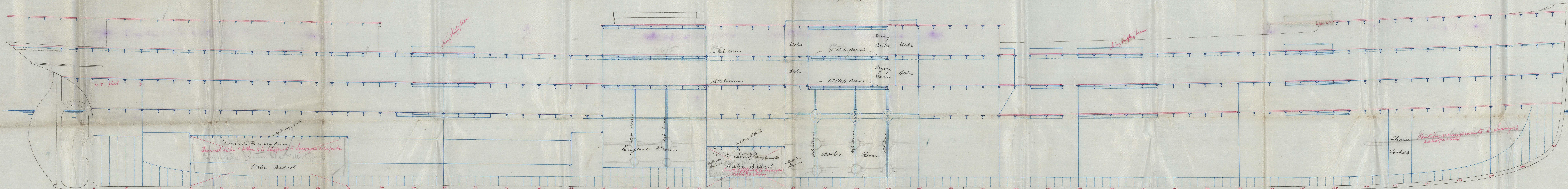


No. 269-70
 Drawing showing proposed scantlings for
 Forecastle, Bridge and after Promenade decks.
 Scantlings of Ballast tanks and also strengthening
 in way of Engine & Boiler spaces.

Promenade Deck supported at sides
 by pillars
 Stringer Plate . . . 12" x 1/2"
 Deck Plate . . . 12" x 1/2"
 Beams . . . 8" x 12" x 1/2" angle

Bridges
 With side houses underneath and open aloft
 Decking . . . 1/2" x 1/2"
 Stringer Plate . . . 12" x 1/2"
 Deck Plate . . . 12" x 1/2"
 Beams . . . 8" x 12" x 1/2" angle

Forecastle Forecastle
 Decking . . . 1/2" x 1/2"
 Stringer Plate . . . 12" x 1/2"
 Deck Plate . . . 12" x 1/2"
 Beams . . . 8" x 12" x 1/2" angle



SHIP DRAWING OFFICE
 28/12/97
 A.A.
 FAIRFIELD

28/12/97

JOHN ELDER & CO.,
 Shipbuilders and Engineers,
 GLASGOW.