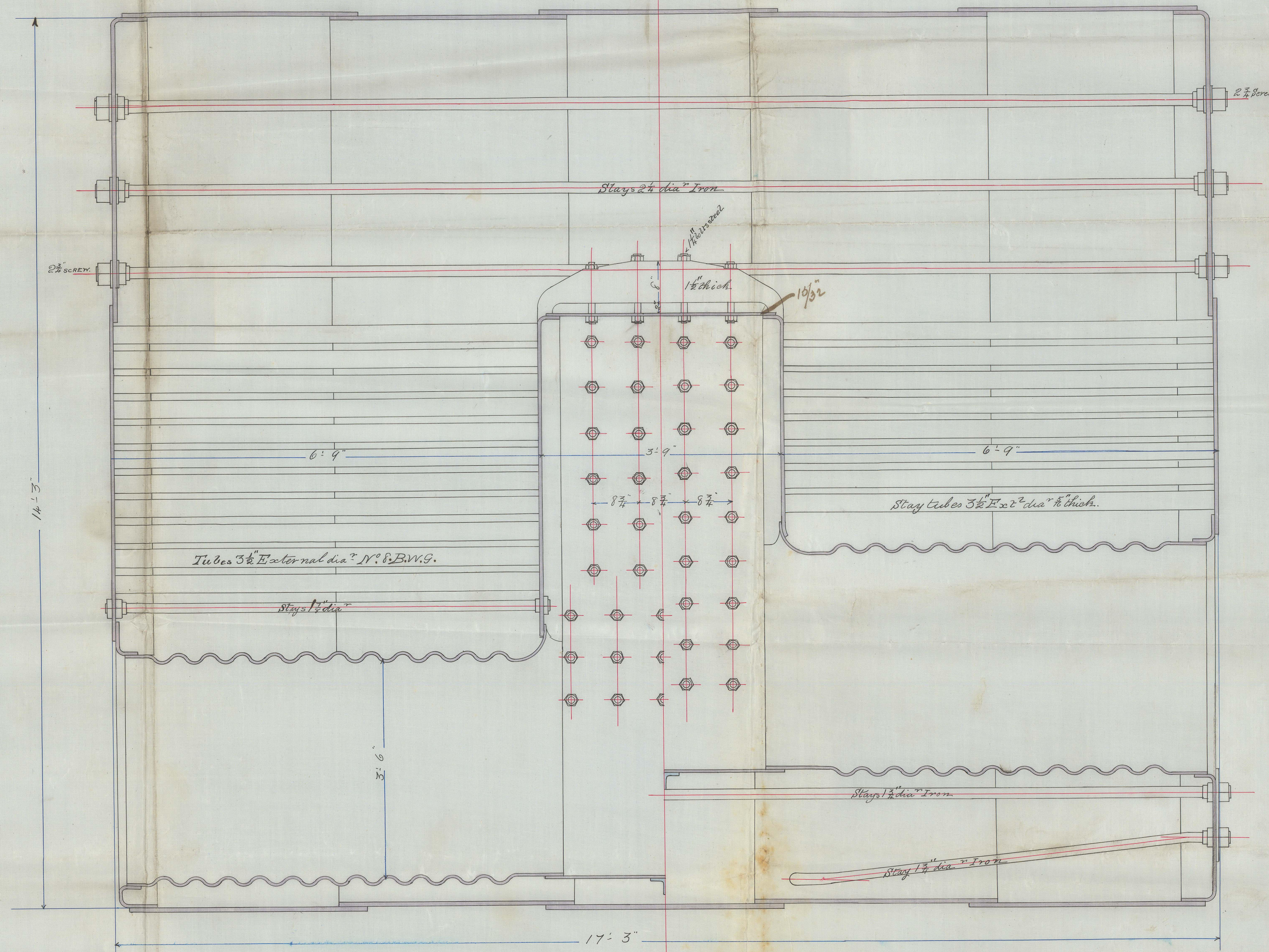
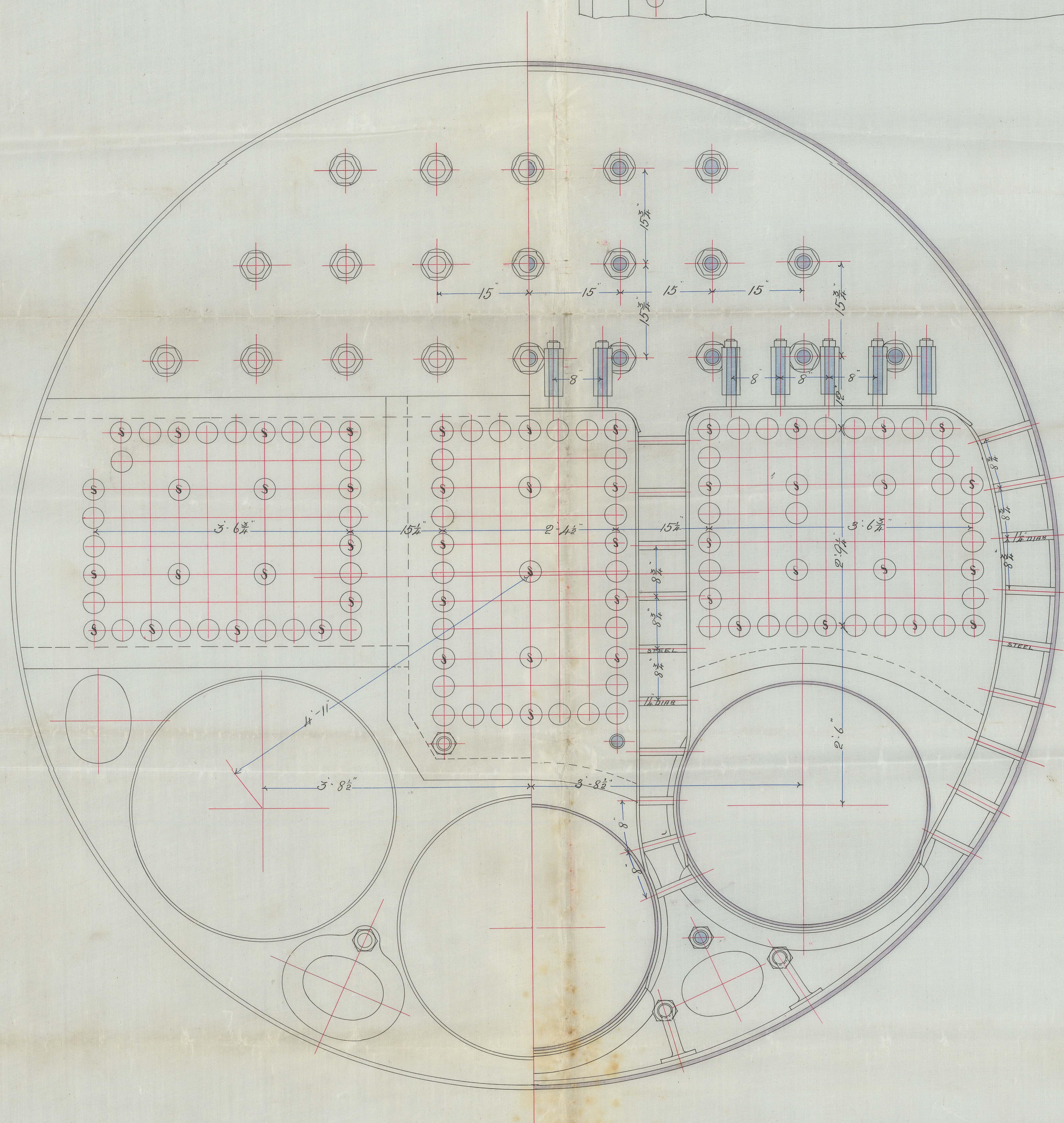
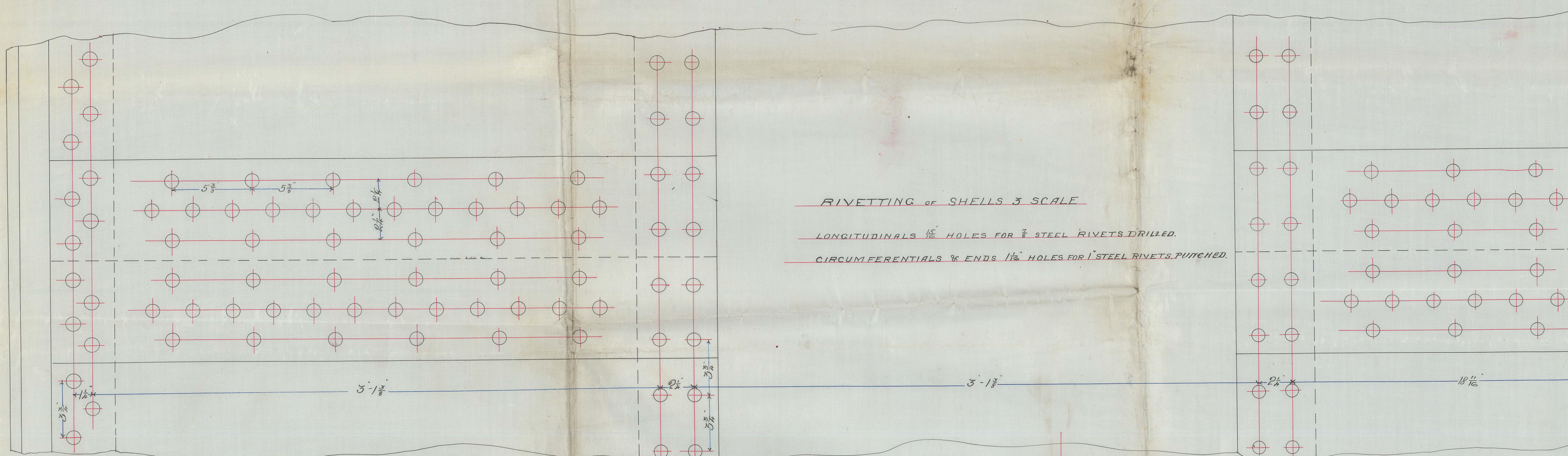


Let. to Geo. 27/2/82:

S. S. "Hawarden Castle" — Glasgow Report N^o. 6065
S. S. "Norham Castle" — do — " 6113. —

THICKNESS OF PLATES	
SHELL	$\frac{7}{8}$ " STEEL
STRAPS	$\frac{1}{8}$ to $\frac{3}{8}$ " "
TOP FLOOTS	$\frac{3}{8}$ " "
WING FRONT TUBE PLATE	$\frac{1}{16}$ " "
CENTRE "	$\frac{1}{8}$ " "
BOTTOM TUBES	$\frac{5}{8}$ " "
FURNACES	$\frac{7}{8}$ " "
FIREBOX BOTTOMS	$\frac{5}{16}$ " "
TOP & SIDES	$\frac{1}{16}$ " "
BACK TUBE PLATES	$\frac{1}{8}$ " "



M
 25/2/82

BOILERS №269.70.

Scale 1" = 1 Foot

Boiler Pressure 80 lbs per sq in

16/2/82
In Glasgow
24.2.82