

D.S.  
16/7/82

New Steel Boilers  
for  
S.S. South Western Glasgow Report A. 6083.

Scale 1" = 1 foot

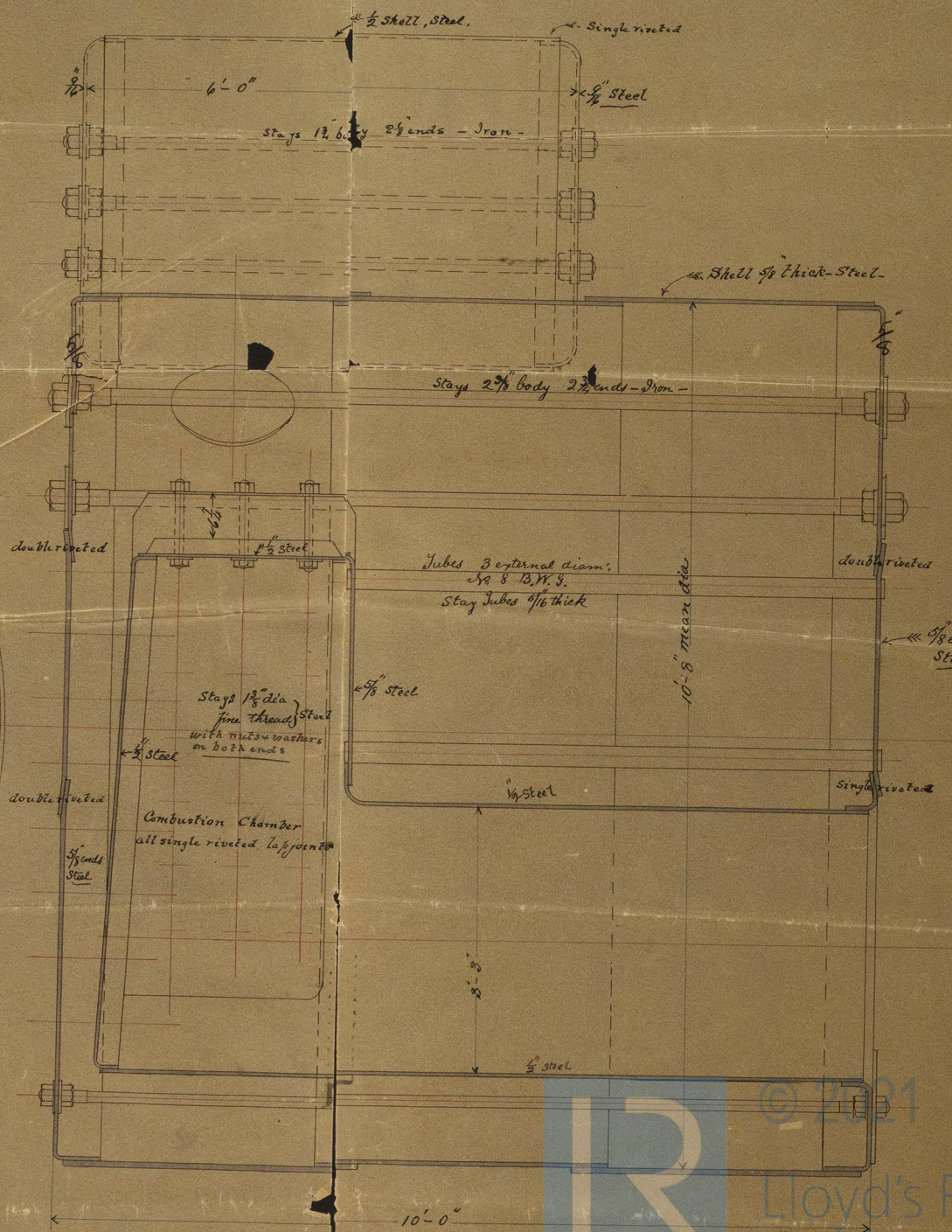
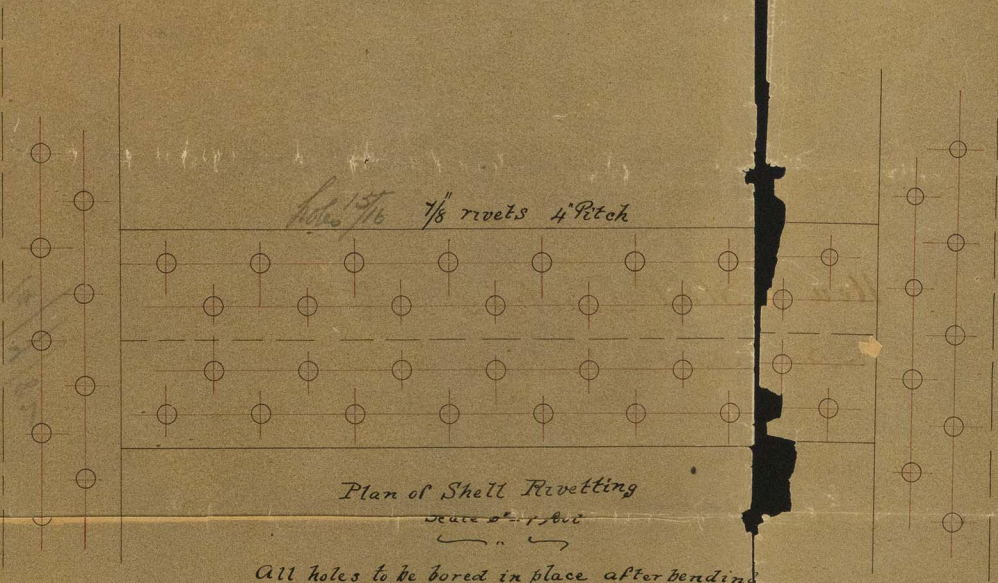
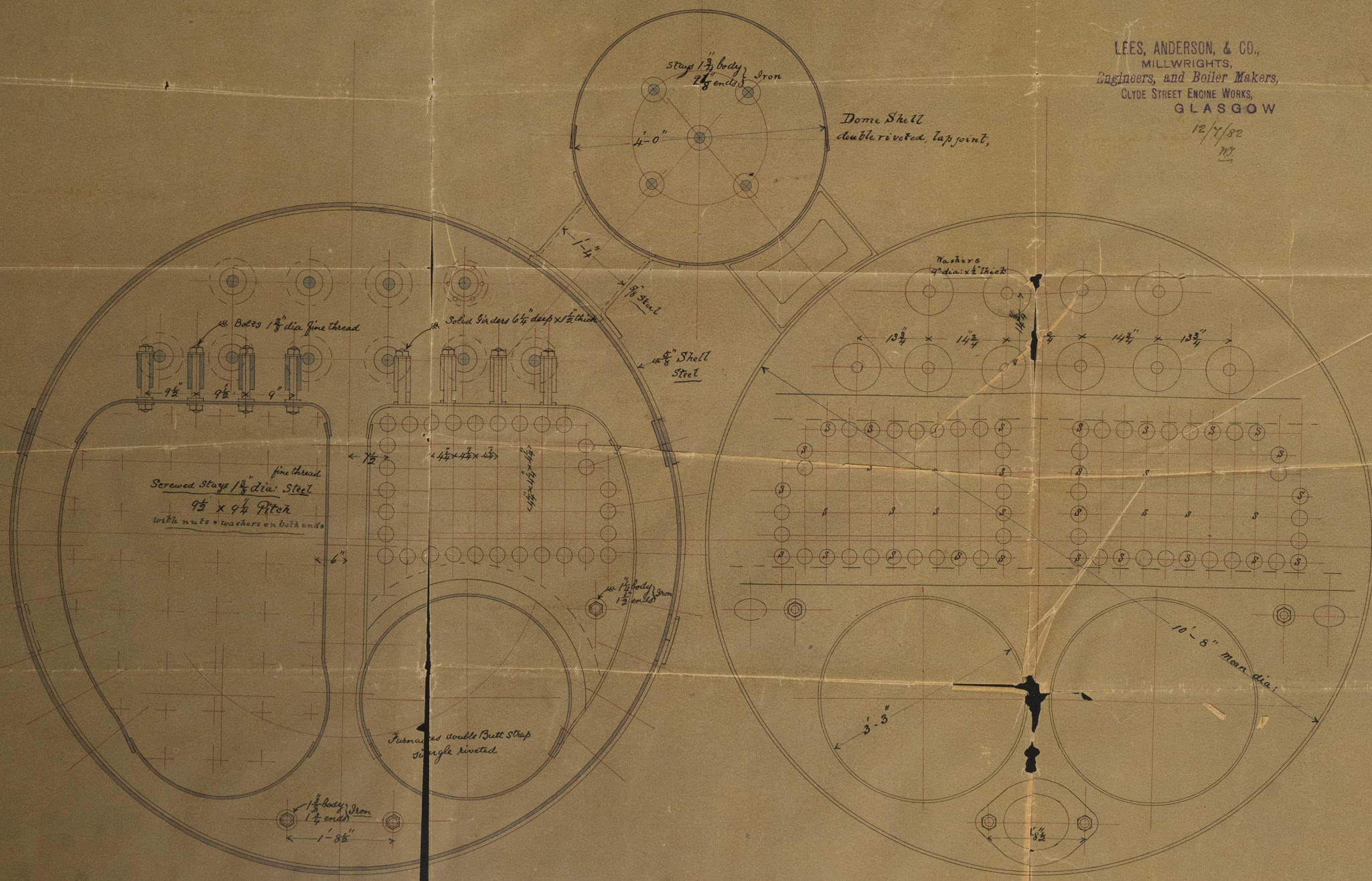
Working Pressure = 70 lbs per Inch

All rivets to be of steel

LEES, ANDERSON, & CO.,  
MILLWRIGHTS,  
Engineers, and Boiler Makers,  
CLYDE STREET ENGINE WORKS,  
GLASGOW

12/7/82

12





Main Boiler  
South Western

14/7/82

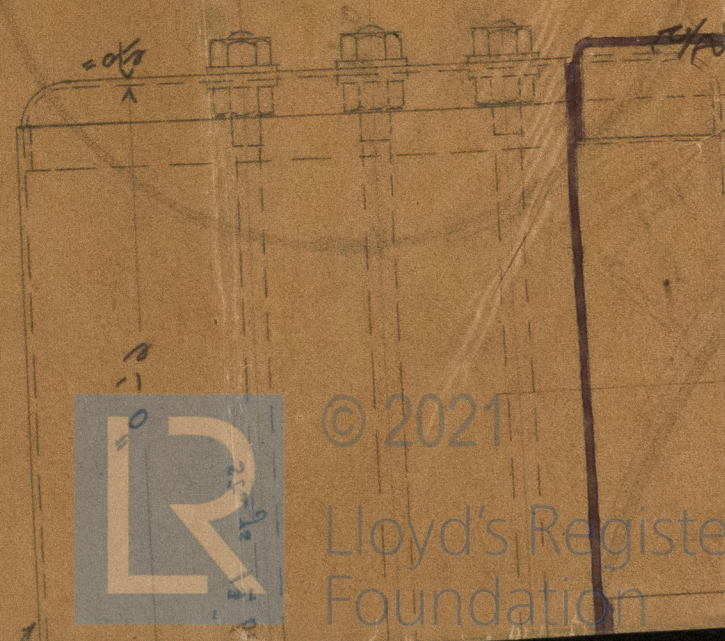
1/8" water 4.8500

Steel Boilers  
for  
South Western  
Water 1.1000

Plan of Shell 15500000

All holes to be bored in place after bending

GLASGOW  
CLADE STEEL ENGINE WORKS  
ENGINEERS and BOILER MAKERS  
WILLOWBRIGHTS  
LEES' ANDERSON & CO"



© 2021  
Lloyd's Register  
Foundation

GLS143-0082