

# S. S. "Tarawera" - Glasgow Report No 5914- S. S. "Waihora" -

5948-

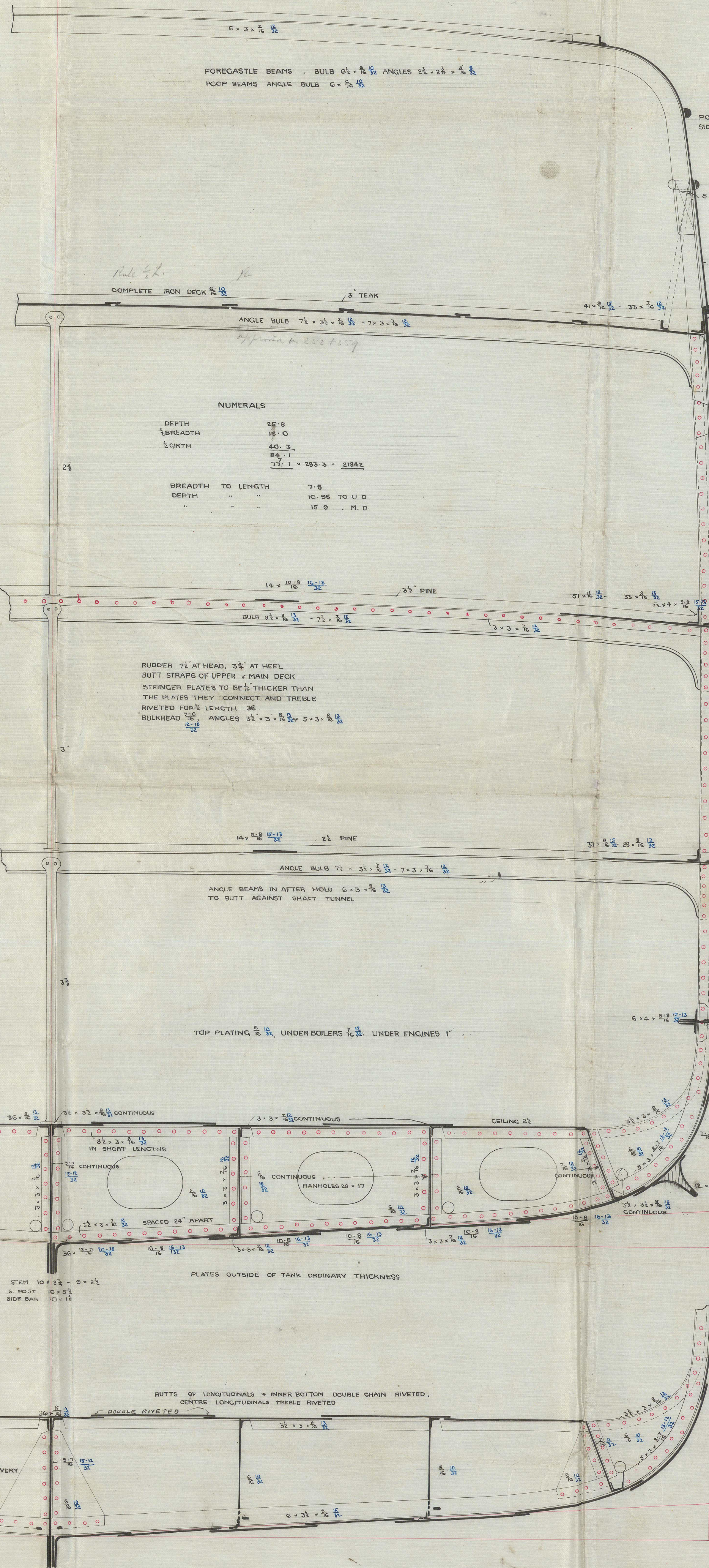
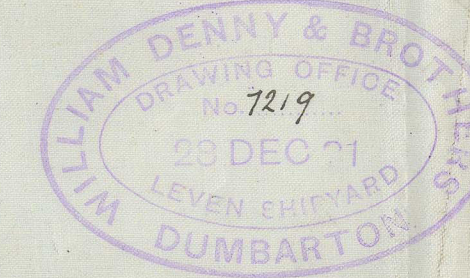
## MIDSHIP SECTION

S. S. 263 & 4

285' x 36' x 25' M.

TO CLASS 100 A, 3 DECKED AT LLOYDS  
SCALE 1/2" = 1 FT.

STEEL SCANTLINGS IN BLUE



NUMERALS

DEPTH	25.9
BREADTH	18.0
1/2 CIRTH	40.3
	84.1
	77.1 x 283.3 = 21842

BREADTH TO LENGTH	7.9
DEPTH	10.96 TO U.D.
	15.9 M.D.

EQUIPMENT

84-1 x 283.3	1 23825 + 10 = 24807
--------------	----------------------

2 BOWYER ANCHORS	32 CWT.	EX. STOCK
1 " "	27 1/2	" "
1 STREAM " "	10 1/2	" "
1 KEDGE " "	5 1/2	" "
1 " "	2 1/2	" "

270 FATHOMS	1 1/2	STUD CHAIN CABLE
75 " "	1 1/2	STREAM CHAIN
90 " "	12	TOWLINE OR 4" STEEL WIRE
90 " "	3 1/2	WARP
90 " "	7 1/2	" "

RUDDER 7 1/2 AT HEAD, 3 1/2 AT HEEL  
BUTT STRAPS OF UPPER & MAIN DECK  
STRINGER PLATES TO BE 1/2" THICKER THAN  
THE PLATES THEY CONNECT AND TREBLE  
RIVETED FOR 1/2" LENGTH 36  
BULKHEAD 6 1/2 x 5 1/2 ANGLES 3 1/2 x 5 1/2 5 x 3 1/2

ANGLE BEAMS IN AFTER HOLD. 6 x 3 x 6 1/2  
TO BUTT AGAINST SHAFT TUNNEL

TOP PLATING 1/2" UNDER BOILERS 1/2" UNDER ENGINES 1"

THIS ARRANGEMENT EVERY 4 FT.  
UNDER ENGINES EVERY 2' APART

THIS ARRANGEMENT EVERY  
4 FT. APART

18/11/82  
2/1/82