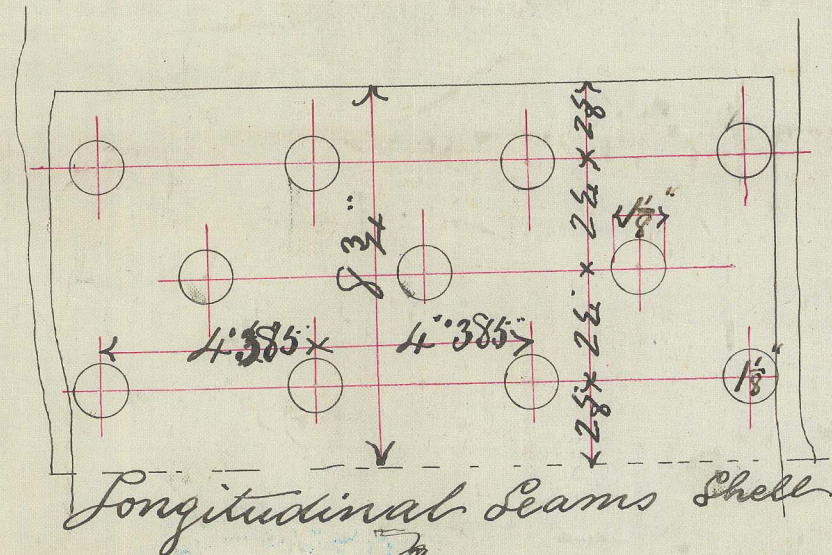


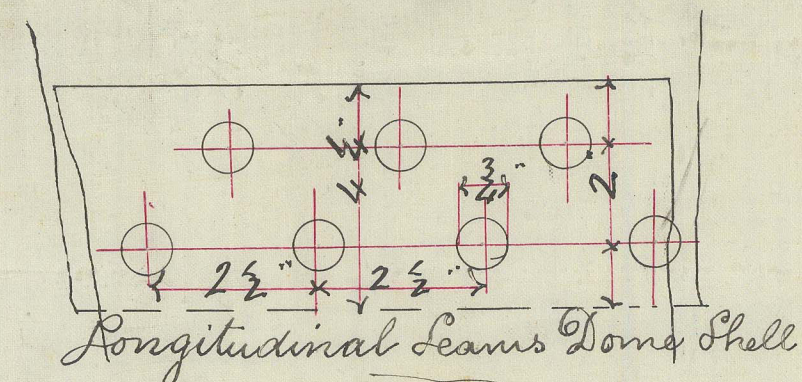
Boiler end seams. Air tests. Yarnage.



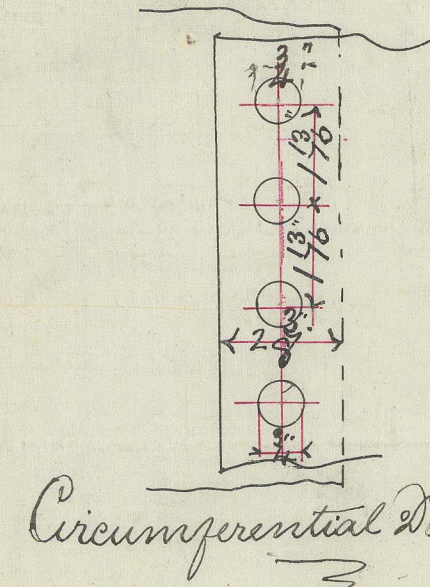
Longitudinal Leams Shell

Heating Surface
 Tubes 1295 sq. ft.
 Other 290 "
 Total 1585 " " in one Boilers
 Grate Surface 35 " " " " "
 Working Pressure 80 lbs per sq. inch
 Shell plates of Steel drilled after
 bending.
 Furnaces & fire box. Lowmoor. *Alfred*

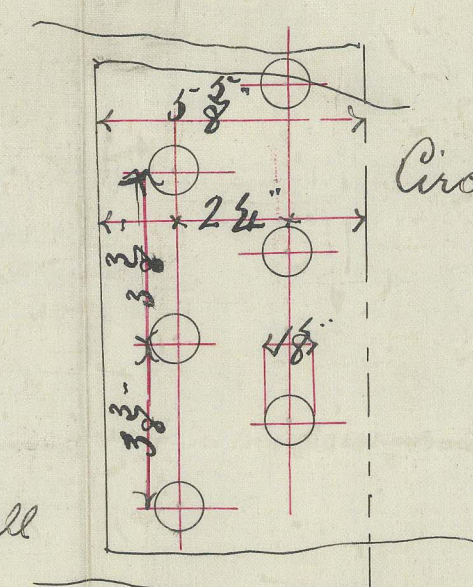
Dome plate of Steel punched
Before Bending



Longitudinal Leams Dome Shell



Circumferential Dome Shell



Circumferential Seams
Boiler Shell

Singles rivetted seams
3" wide - 1¹³/₁₆ pitch
2 3/4 breadth of lancing

№ 46 S.S. "Parakyl'a"

27/9/82

25

Lead 74 0/0

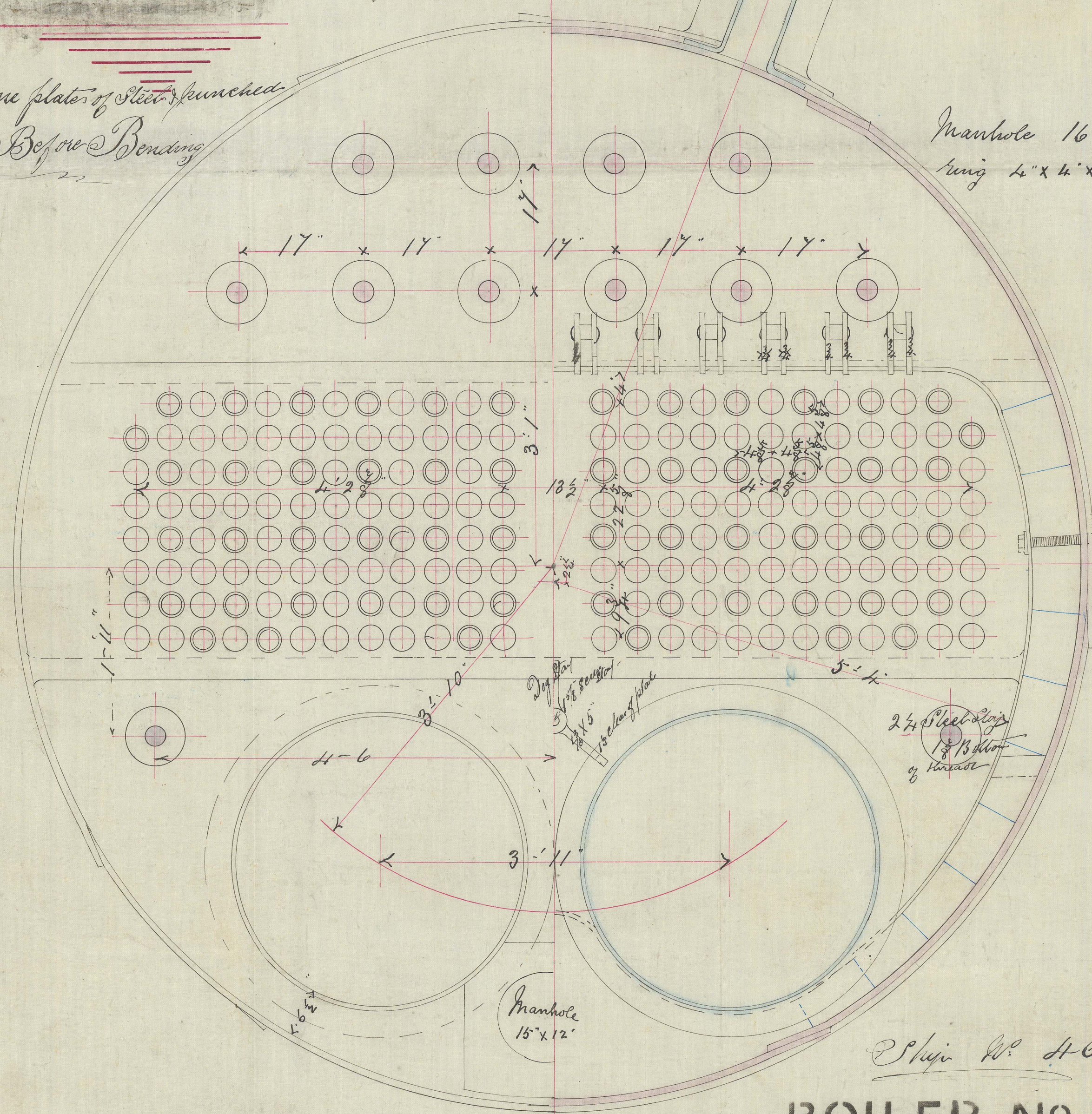
End. plus 74
-82

Brands 131

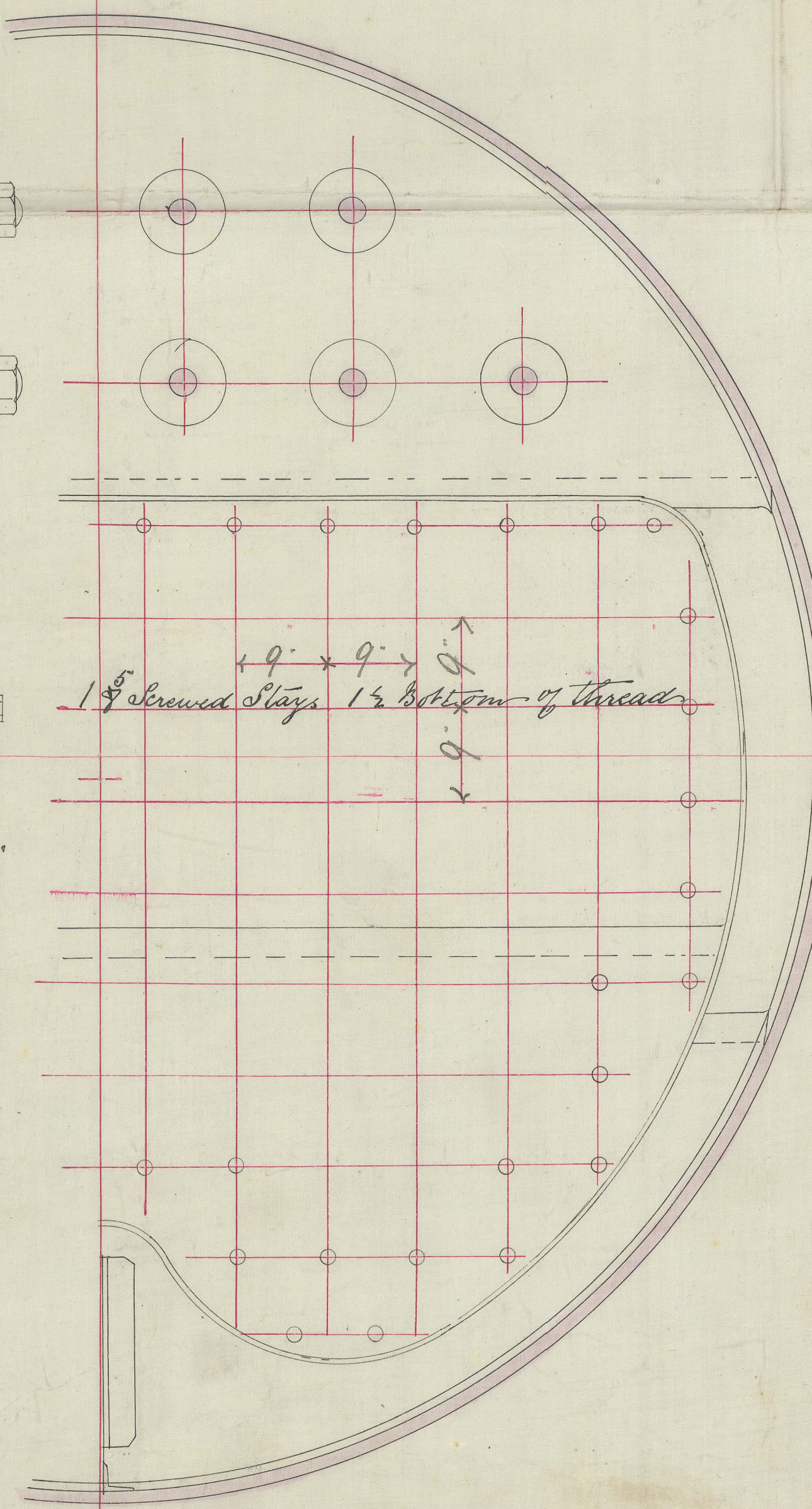
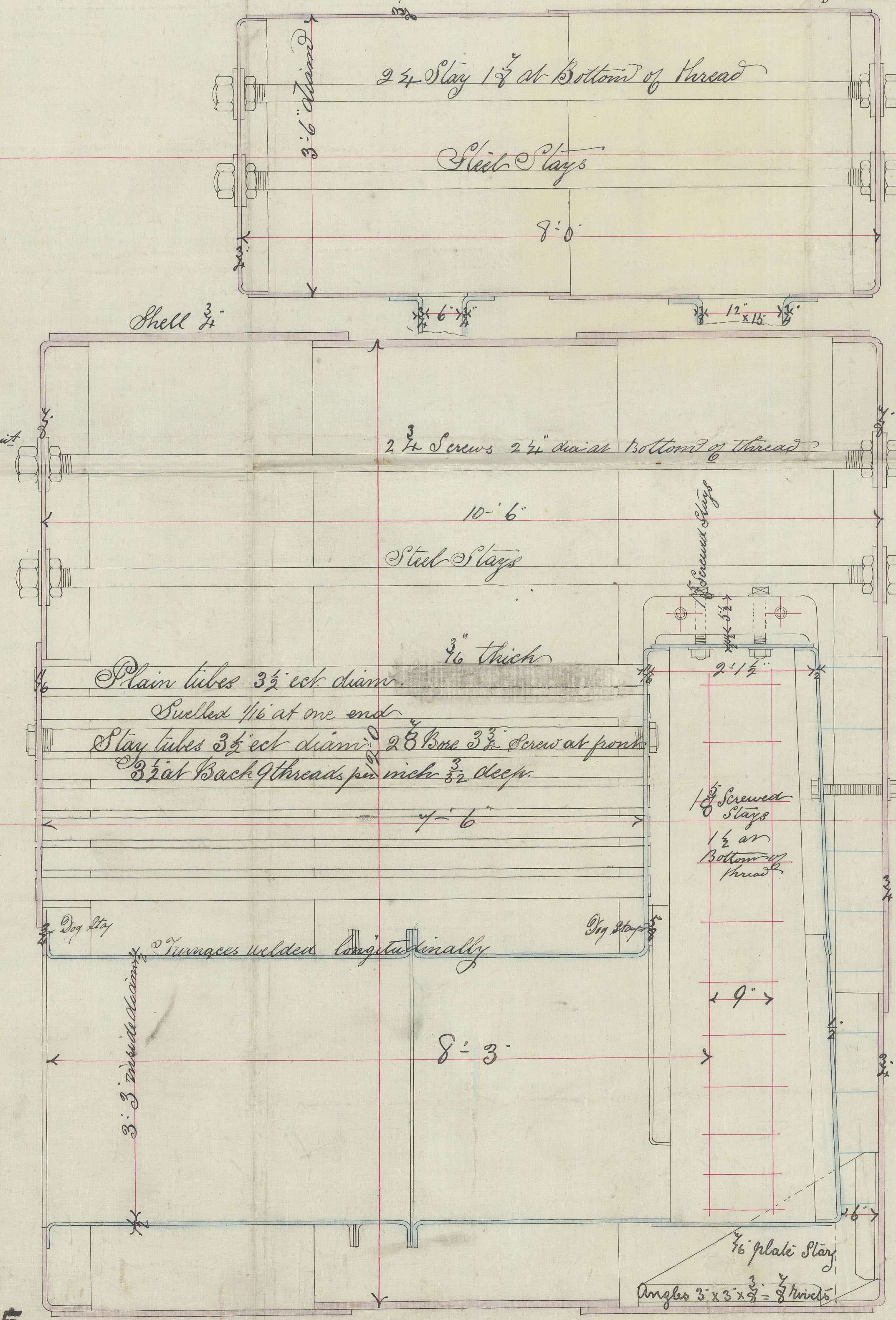
Muck. 90
 131 h

Shell

ES



Manhole 16 x
ring 4" x 4" x 3/4"



Ltr. to Dun.
 22/2/82.

hm
v/v/82

Pro 1872/8-
p. 2.

BOILER NO 194 195
Scale 1" to one foot