

10.3.81

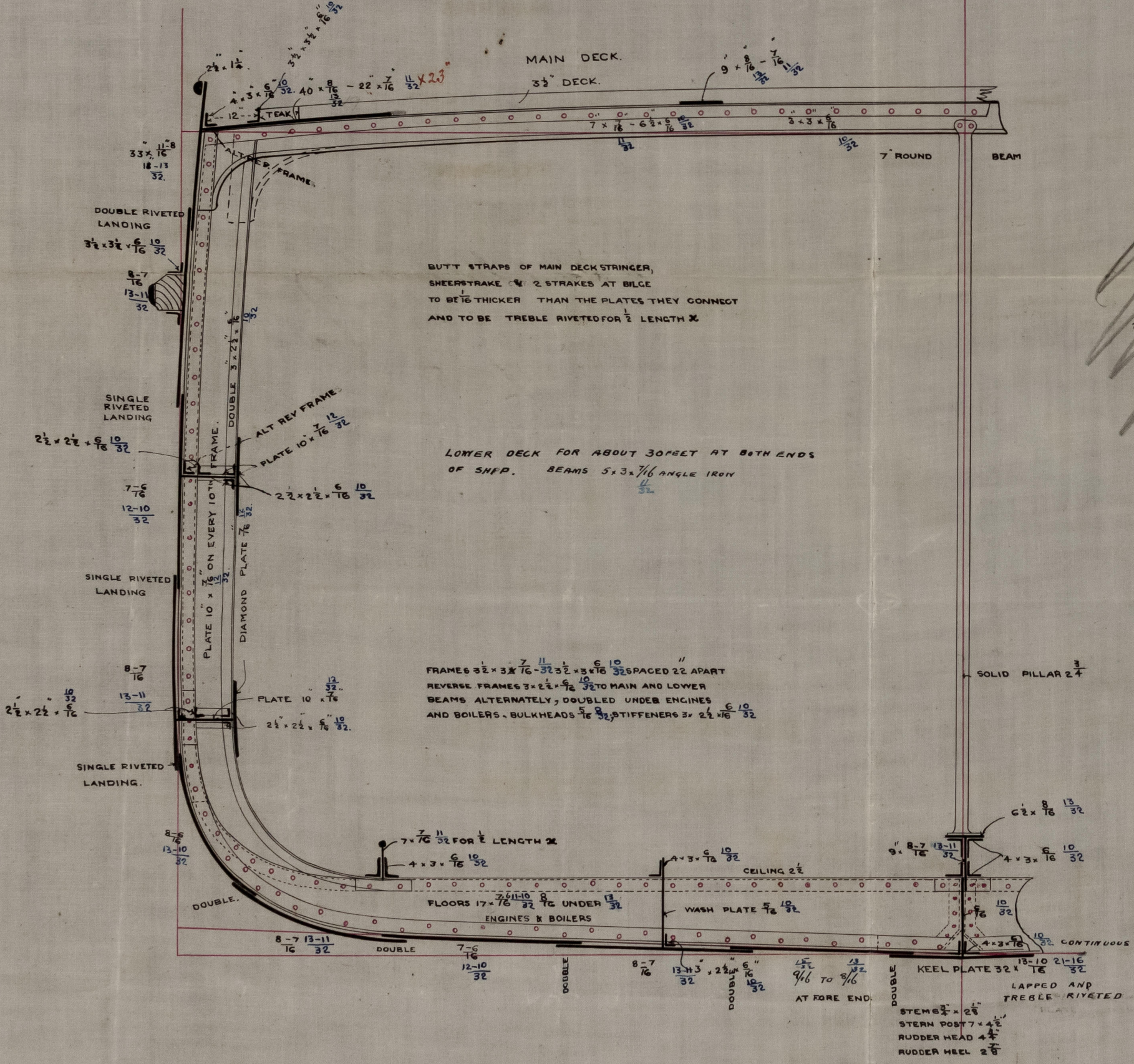
h^o 256

S.S. "Omapere" Glasgow Report
No 34/45.

MIDSHIP SECTION
S.S. 180'29" x 15'3" MOULDED
TO CLASS 100 A LLOYDS
SCALE 1/2" = 10'00"



STEEL SCANTLINGS IN BLUE



NUMERALS

1/2 BREADTH	=	14.5
1/2 CIRTH	=	25.0
DEPTHS	=	15.93
		58.33
58.33 x 176.88	=	10,434.1
BREADTH TO LENGTH		6.16
DEPTH TO LENGTH		11.2

EQUIPMENT

- see Profile
- 10434 x 1/16" = 11,477
 - 2 BOWER ANCHORS 15 1/2 CWT EX STOCK } 38 1/2 CWT
 - 1 " " 11 1/2 " " }
 - 1 STREAM " 4 1/2 " " }
 - 1 KEDGE " 2 1/2 " " }
 - 1 " " 1 1/2 " " }
 - 20 FMS 1 1/8" STUD CHAIN CABLE
 - 60 FMS 1/8" STREAM CHAINS OR 3" STEEL WIRE
 - 75 FMS 8 1/2" HEMP TOWLINE
 - 90 " 6" WARP
 - 80 " 4" "

BUTT STRAPS OF THE SKIN ARE TO BE IN ALL CASES 1/8" THICKER THAN THE PLATES THEY CONNECT, AND IF BUILT OF STEEL THEY ARE TO BE NOT LESS THAN 20% THICKER

180W
107.3/82

GLS191-0052