

COPY D<sup>RC</sup>  
N<sup>o</sup> 765

HALF MIDSHIP SECTION OF IRON THREE DECK SCREW STEAMER  
TO CLASS 100A AT LLOYDS  
DIMENSIONS PER RULE 284.34 x 35. x 27.20

"S. S. Heimdal"  
Glasgow Report  
N<sup>o</sup> 5434.

16.9.81

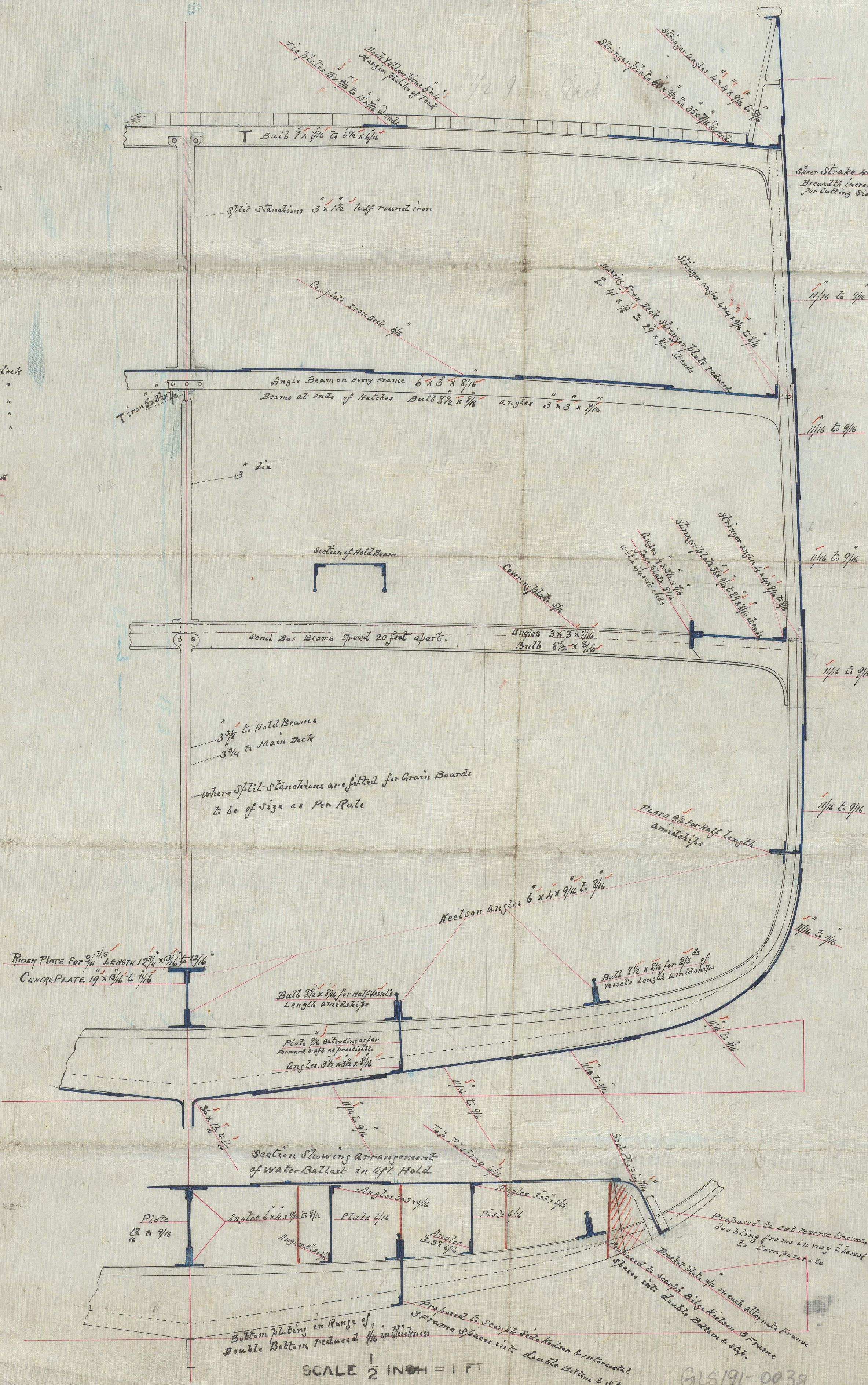
DEPTH UPPER DECK TO FLOORS 25.20  
" MIDDLE " " " 18.20

PROPORTIONS

DEPTHS	UPPER DECK 10.45
	MIDDLE " 14.04
BREADTHS	8.12
DEPTH	27.20
1/2 BREADTH	17.50
1/2 GIRTH	40.20
	84.90
	7.00
	77.90 FRAME NUMERAL
	284.34
	31160
	23370
	31160
	62320
	15580
	22150.0860 PLATING NUMERAL
EQUIPMENT NUMERAL	
	84.90 x 284.34 = 24140 + 1/10 = 1609
	1609
	25749 = EQUIP. NUMERAL

EQUIPMENT

2 BOWER ANCHORS	32 Cwt. ex Stock
1 " "	2 1/4 " "
1 STREAM " "	10 1/2 " "
1 KEDGE " "	5 1/4 " "
1 " "	2 1/2 " "
250 FATHOMS 1 1/2" CHAIN CABLE	
75 " 1 1/2" STREAM CHAIN	
90 " 12" HEMPTONLINE	
90 " 9 1/2" HAWSER	
90 " 7 1/2" WARP	



HEEL	10 x 2 3/4
STEM	10 x 2 3/4 to 7 1/2 x 2 3/4 at head
STERN FRAME	10 x 6
RUDDER	7 3/4 at Head 3 1/4 at Heel
FRAMES	5 x 3 x 1/16 to 1/16 all in upper deck
REVERSE	3 1/2 x 3 x 1/16 to 1/16 all in upper deck
FLOORS	2 1/2 x 3/4 to 1/16 all in upper deck
BULKHEAD PLATING	1/16 to 1/16
" ANALES	3 1/2 x 3 x 1/16
TUNNEL PLATING	1/16 with 3/4 in lagging under hatch
FORECASTLE BEAMS	Bulb 6 1/2 x 1/16
" STINGER	25 x 1/16
" SIDE PLATING	1/16
CEILING	2 1/2

Bulb Straps of Upper & Middle Deck Stinger Plates  
Sheer Strake, three Strakes of plating at the  
Bilge to be 1/16 thicker than the plates they connect  
and treble Riveted for Half Length amidships  
15 Rivets to be used in Bulbs & Landings of Sheer  
Strake & Garboard Strake  
1/8 Rivets throughout remainder of Sheer.

DOBIE & CO.,

SHIPBUILDERS,

GOVAN,

GLASGOW.

12/9/81 P

N<sup>o</sup> 117

SCALE 1/2 INCH = 1 FT

GLS 191-0038

© 2021

Lloyd's Register  
Foundation