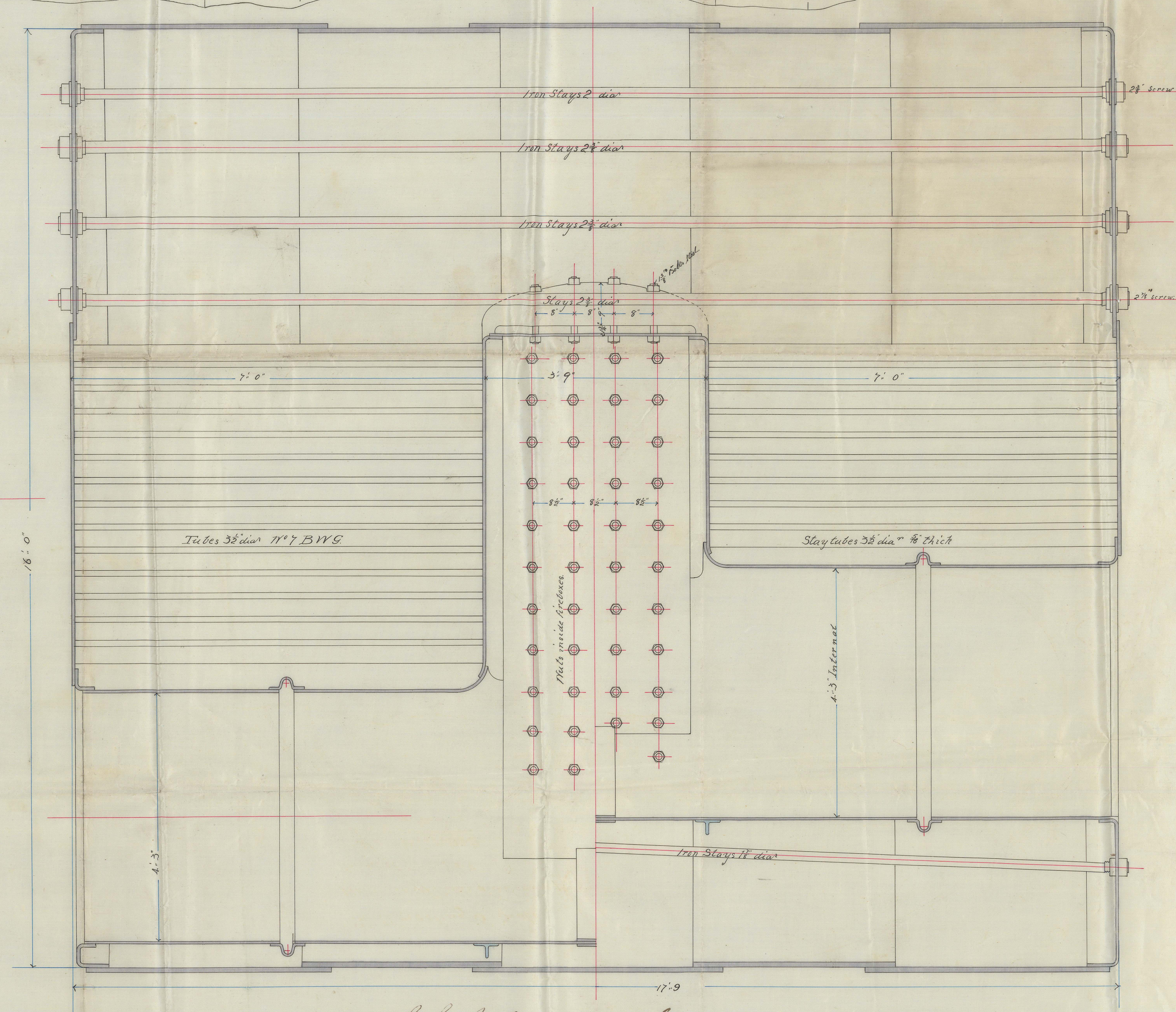
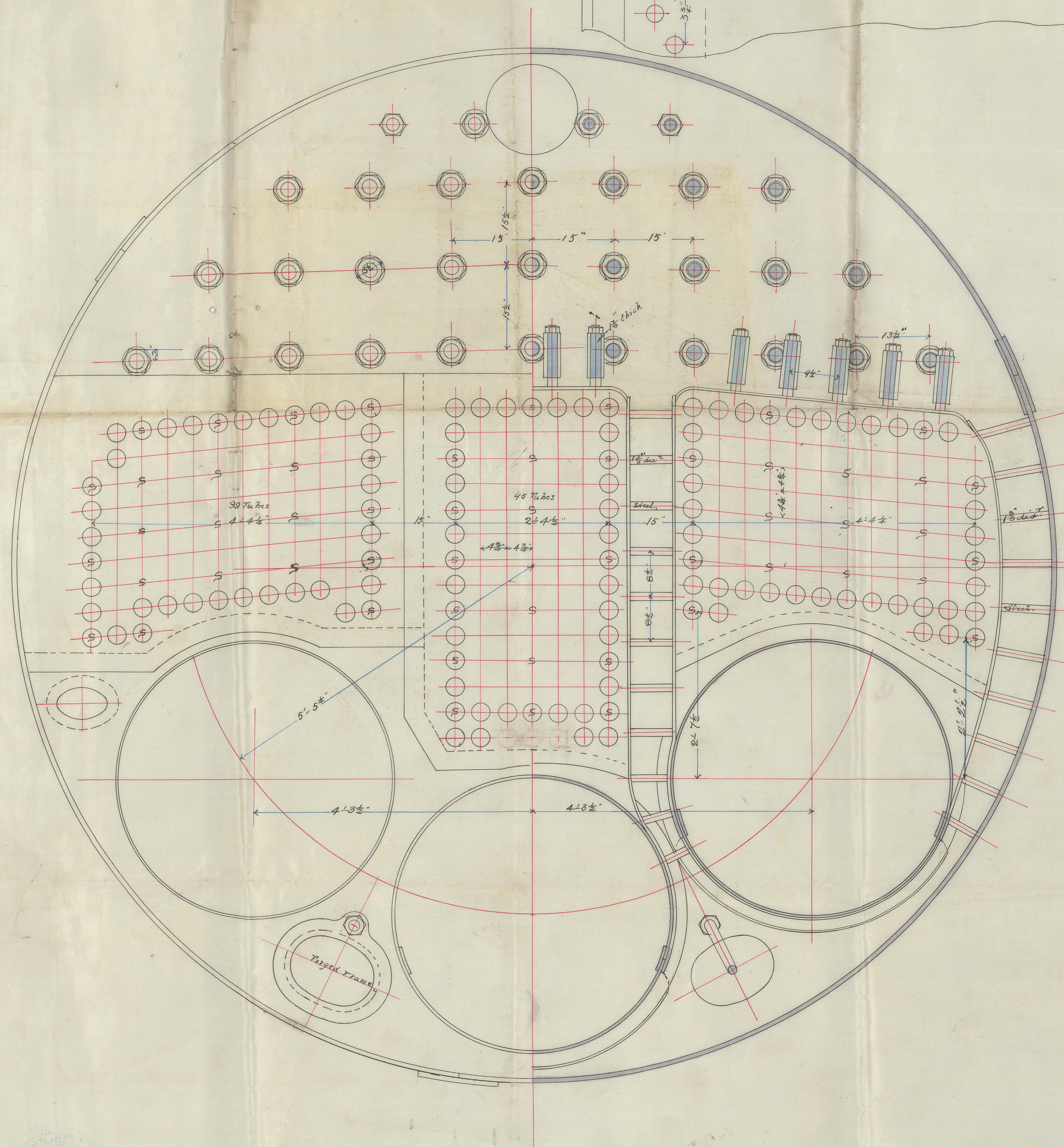
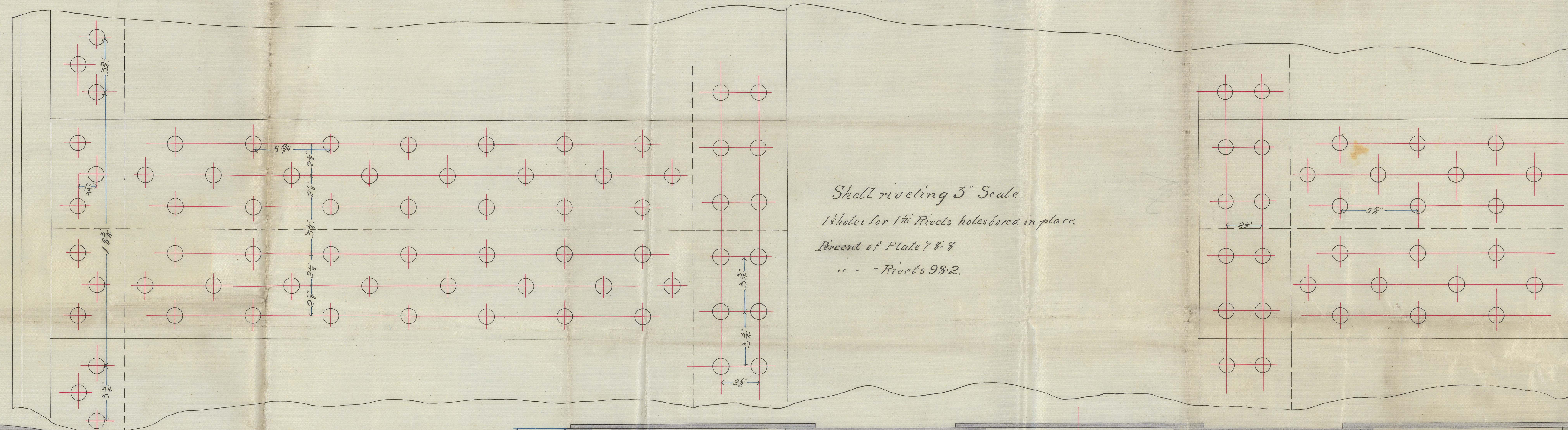



Thickness of Plates.		
Shell	—	1 Steel
" straps	—	$\frac{3}{8}$
Tide plates	—	$\frac{3}{8}$ "
Top fronts	—	$\frac{1}{2}$ "
Bottom fronts	—	$\frac{3}{8}$
Turnace tops	—	$\frac{1}{2}$ "
Turnace bottoms	—	$\frac{3}{8}$ "
" butt straps	—	$\frac{3}{8}$
Fireboxes	—	$\frac{1}{2}$

Supper heated
wholly of Iron



S. S. Austral


 Glasgow 13.4.81

BOILERS N° 249
Scale 1" = 1 Foot.
Pressure 95 lbs per sq. in.



GLS190-0107

John Elder & Coys
No. 1249
S. S. "Austral"

