

13.1.81  
6.10.81

1F00-01233

S.S. "Manapouri" Glasgow Report No. 5654  
S.S. "Wairarapa" Do. Do No. 5765

# MIDSHIP SECTION

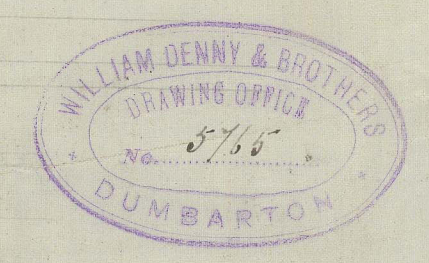
No 252

285 x 36 x 25

TO CLASS 100A AT LLOYD'S 3 DECKED

SCALE 1/2" = ONE FOOT

STEEL SCANTLINGS BLUE



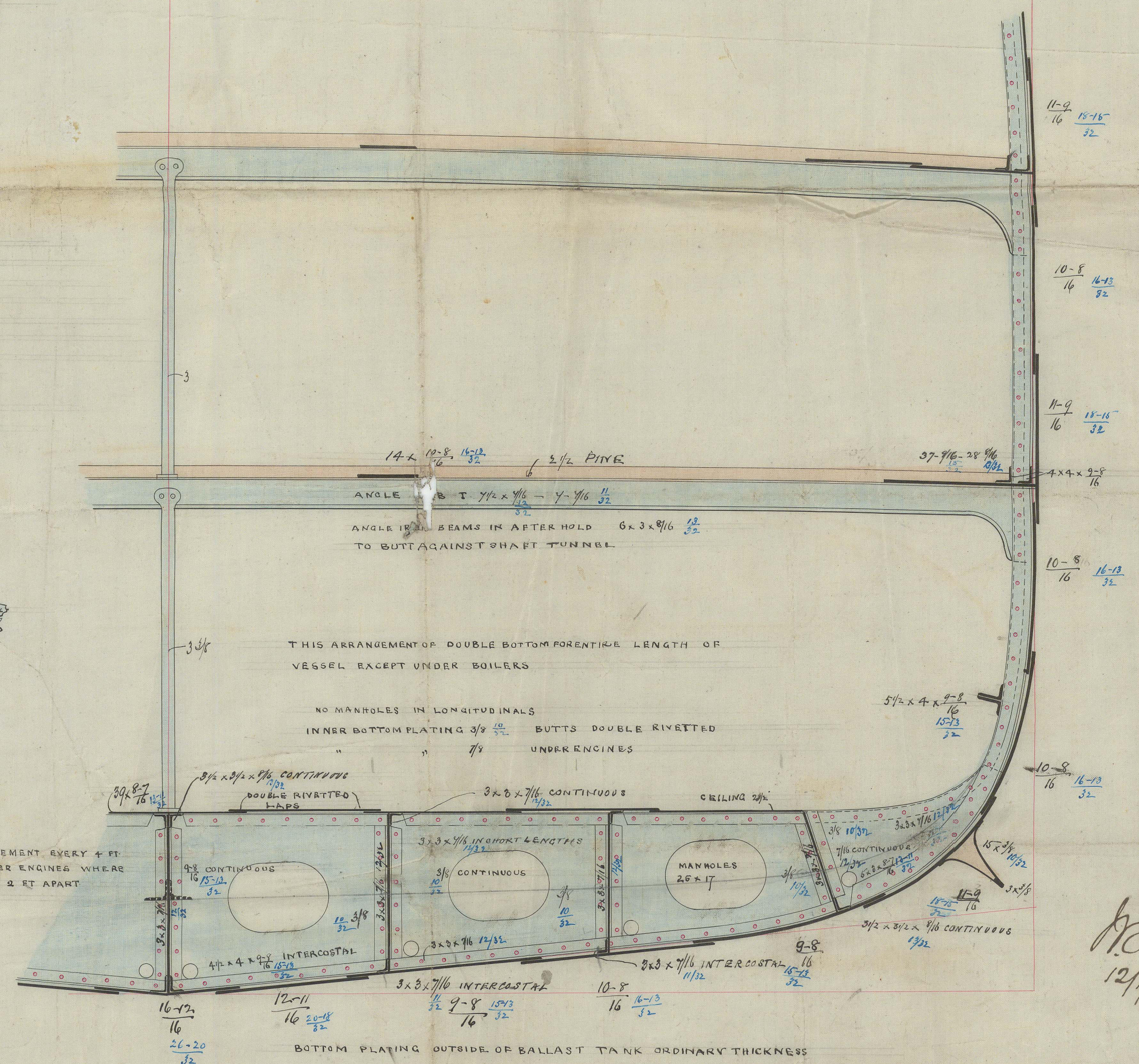
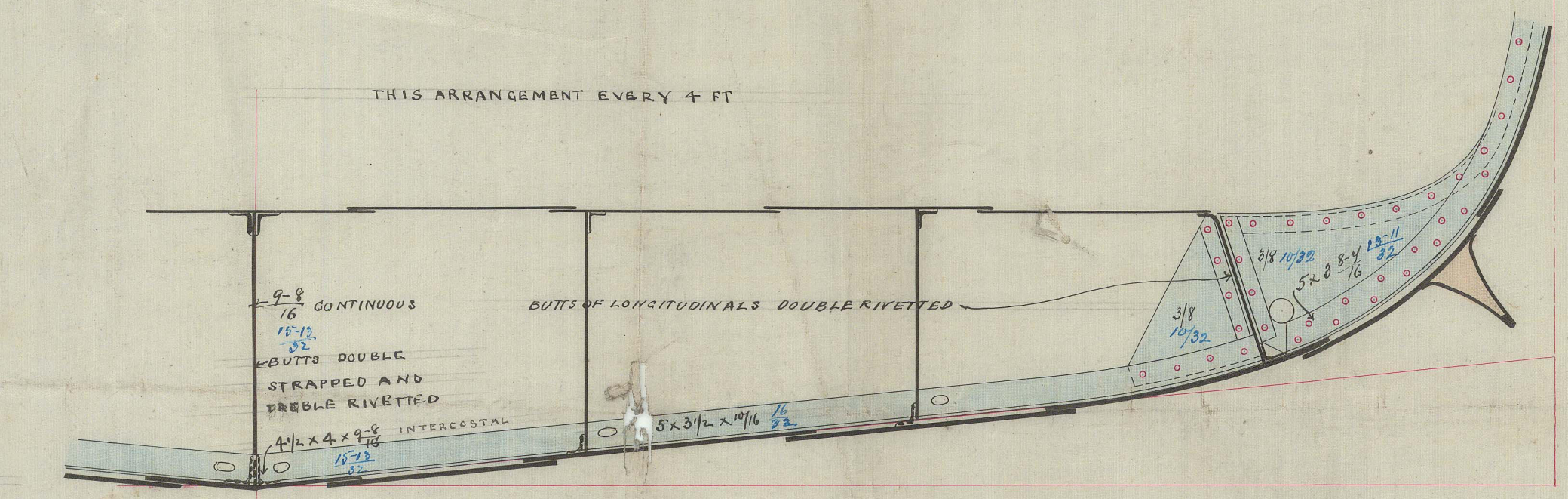
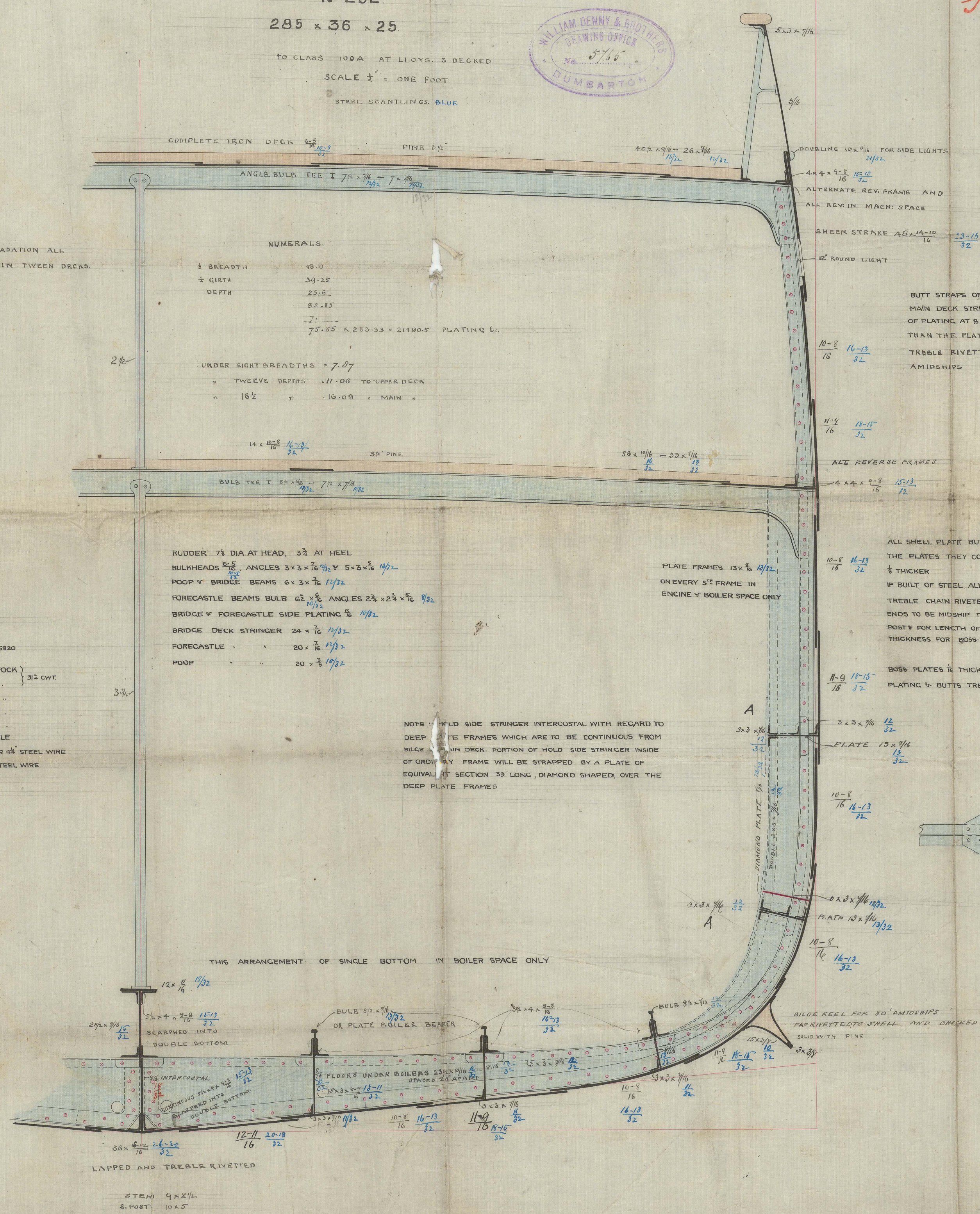
CABIN ACCOMMODATION ALL  
FORE AND AFT IN TWEE DECKS.

## NUMERALS

1/2 BREADTH	15.0
1/2 GIRTH	39.25
DEPTH	25.0
	32.85
	75.85 x 253.33 x 21490.5 PLATING E.C.
UNDER SIGHT BREADTHS	7.87
TWEE DECKS	11.00 TO UPPER DECK
16 1/2	10.09 MAIN

## EQUIPMENT

2 BOWER ANCHORS	32 CWT. EX. STOCK	3 1/2 CWT.
1 STREAM	101	
1 KEDGE	51	
1	21	
270 FATHOMS	1 1/2" STUD CHAIN CABLE	
75	1 1/2" STREAM CHAIN OR 4 1/2" STEEL WIRE	
30	12" TOWLINE OR 4" STEEL WIRE	
30	3/2" HAWSER	
30	7/8" WARP	



18/11/81  
12/1/82