

20.6.87

S. S. "Wairarapa" Glasgow Report No 5765
S. S. Maupouri. " " 5657.

MIDSHIP SECTION

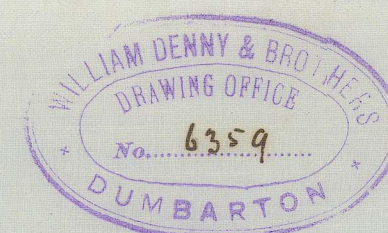
N° 259

285 x 36 x 25

TO CLASS 100A AT LLOYD'S 3 DECKED.

SCALE 1/2" = 1 FOOT.

STEEL SCANTLINGS IN BLUE.



CABIN ACCOMMODATION ALL FORE AND
AFT IN TWEEN DECKS.

NUMERALS

1/2 BREADTH	18'0"
1/2 CIRTH	30'25"
1/2 DEPTH	25'6"
1/2	82'25"
1/2	7'
1/2	75'85" x 285'133" = 21490'5" PLATING, &c

UNDER 8 BREADTHS = 7'89"
12 DEPTHS = 11'06" TO UPPER DECK
16 1/2 " = 16'03" TO MAIN DECK

14 x 10-8 16-13 16-13 16-13
1/2 PINE

BULB TEE 8 1/2 x 8 1/2 x 8 1/2 7 1/2 x 7 1/2 11-13 16-13

EQUIPMENT

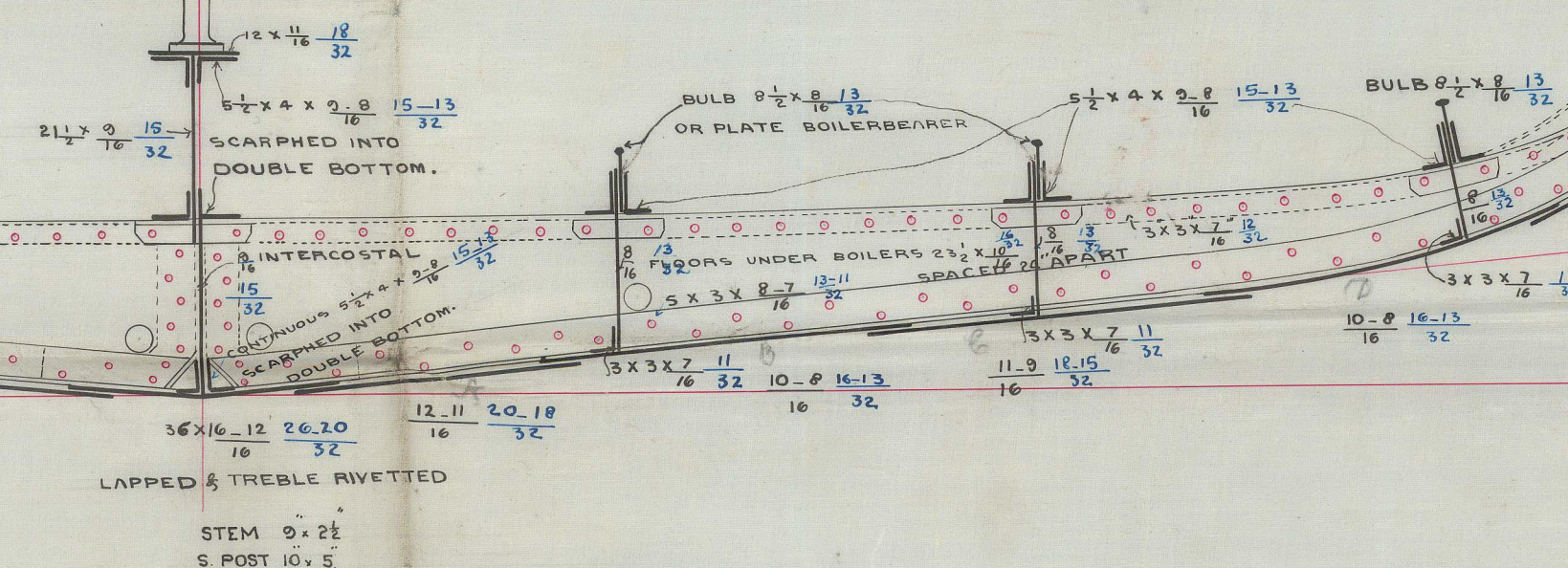
82'85" x 285'33" = 23473 x 1/2 = 25820	
2 BOWER ANCHORS	32 CWT EX. STOCK 31 1/2 CWT
1 " "	27 1/2 " " " "
1 STREAM " "	10 1/2 " " " "
1 KEDGE " "	5 1/2 " " " "
1 " "	2 1/2 " " " "
270 FATHOMS	1 1/2" STUD CHAIN CABLE
75 " "	1 1/2" STREAM CHAIN OR 4 1/2" STEEL WIRE
80 " "	12" TOWLINE OR 4" STEEL WIRE
90 " "	5 1/2" HAWSER
90 " "	7 1/2" WARP

RUDDER 7' DIA AT HEAD 3 1/2' AT HEEL
BULKHEADS 5' x 8' ANGLES 3' x 3' 7' x 7' 5' x 5' 8' x 8'
POOP AND BRIDGE BEAMS 6' x 7' 16-13 16-13
FORECASTLE BEAMS BULB 6 1/2 x 6 1/2 ANGLES 2 3/4 x 2 3/4 5-10 5-10
BRIDGE AND FORECASTLE SIDE PLATING 6-10 10-10
BRIDGE DECK STRINGER 24 x 7 12-13 12-13
FORECASTLE " " 20 x 7 12-13 12-13
POOP " " 20 x 7 12-13 12-13

NOTE

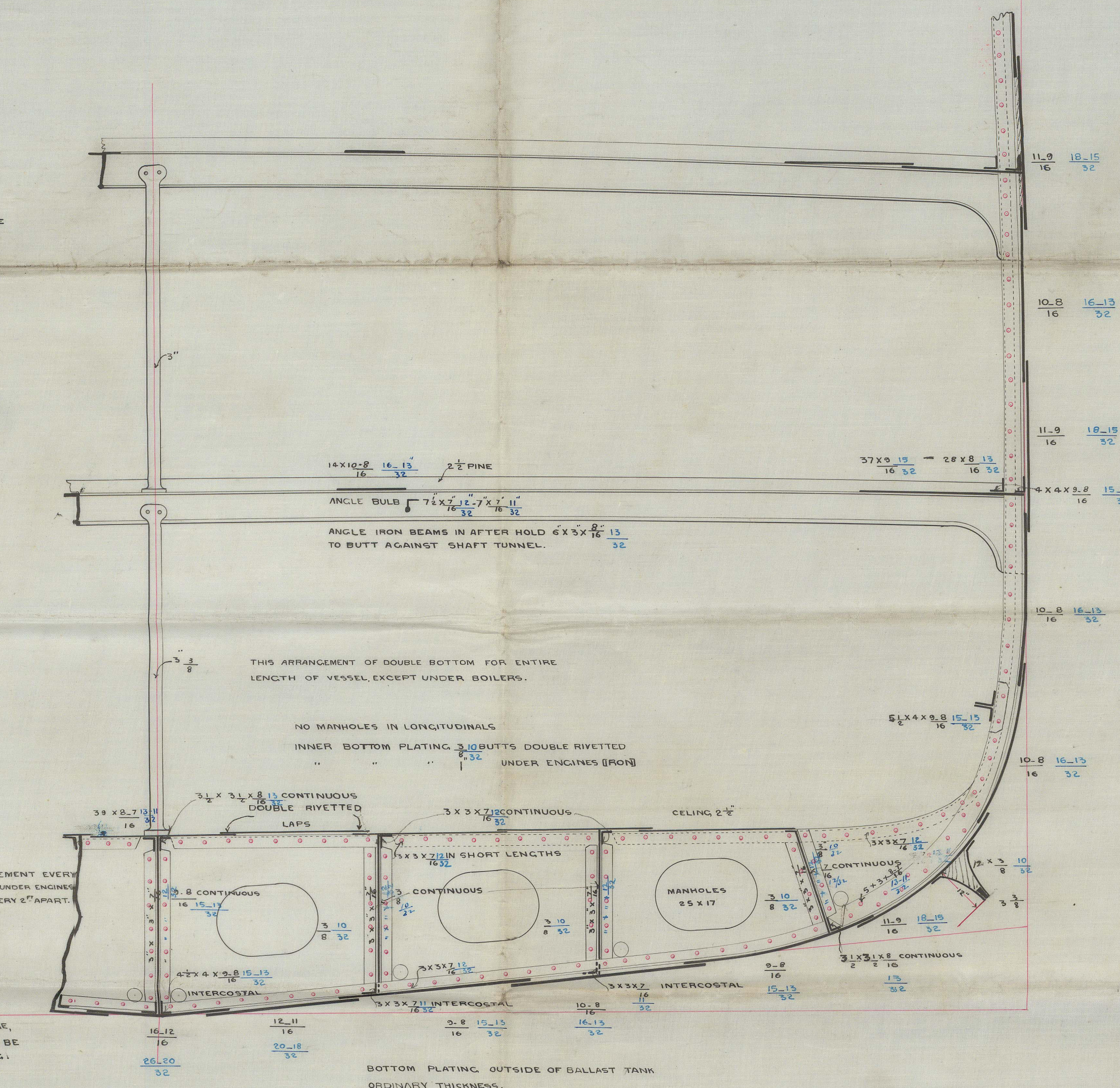
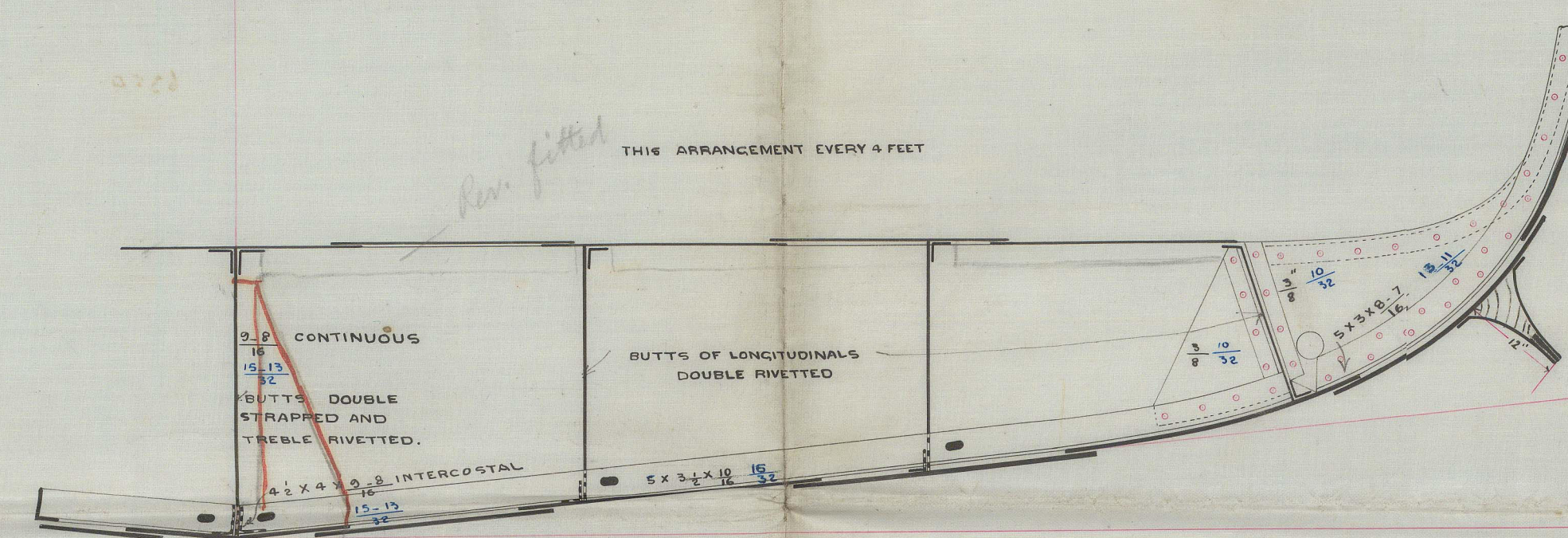
HOLD SIDE STRINGER INTERCOSTAL WITH REGARD
TO DEEP PLATE FRAMES WHICH ARE TO BE CONTINUOUS
FROM BILGE TO MAIN DECK. PORTION OF HOLD SIDE STRINGER
INSIDE OF ORDINARY FRAME WILL BE STRAPPED BY A PLATE
OF EQUIVALENT SECTION LONG DIAMOND SHAPED OVER
THE DEEP PLATE FRAMES.

THIS ARRANGEMENT OF SINGLE BOTTOM
IN BOILER SPACE ONLY.



NOTE

THE SHEER STRAKE, UPPER DECK STRINGER, KEEL STRAKE,
AND ALL BUTTSTRAPS EXCEEDING 1/2" IN THICKNESS, TO BE
ANNEALED, OR THE HOLES RIMED AFTER PUNCHING.



18/20
3/7/87