

Midship Section now made from the Ship  
 The work shown in Red has been  
 added agreeable to Committee's  
 instructions.

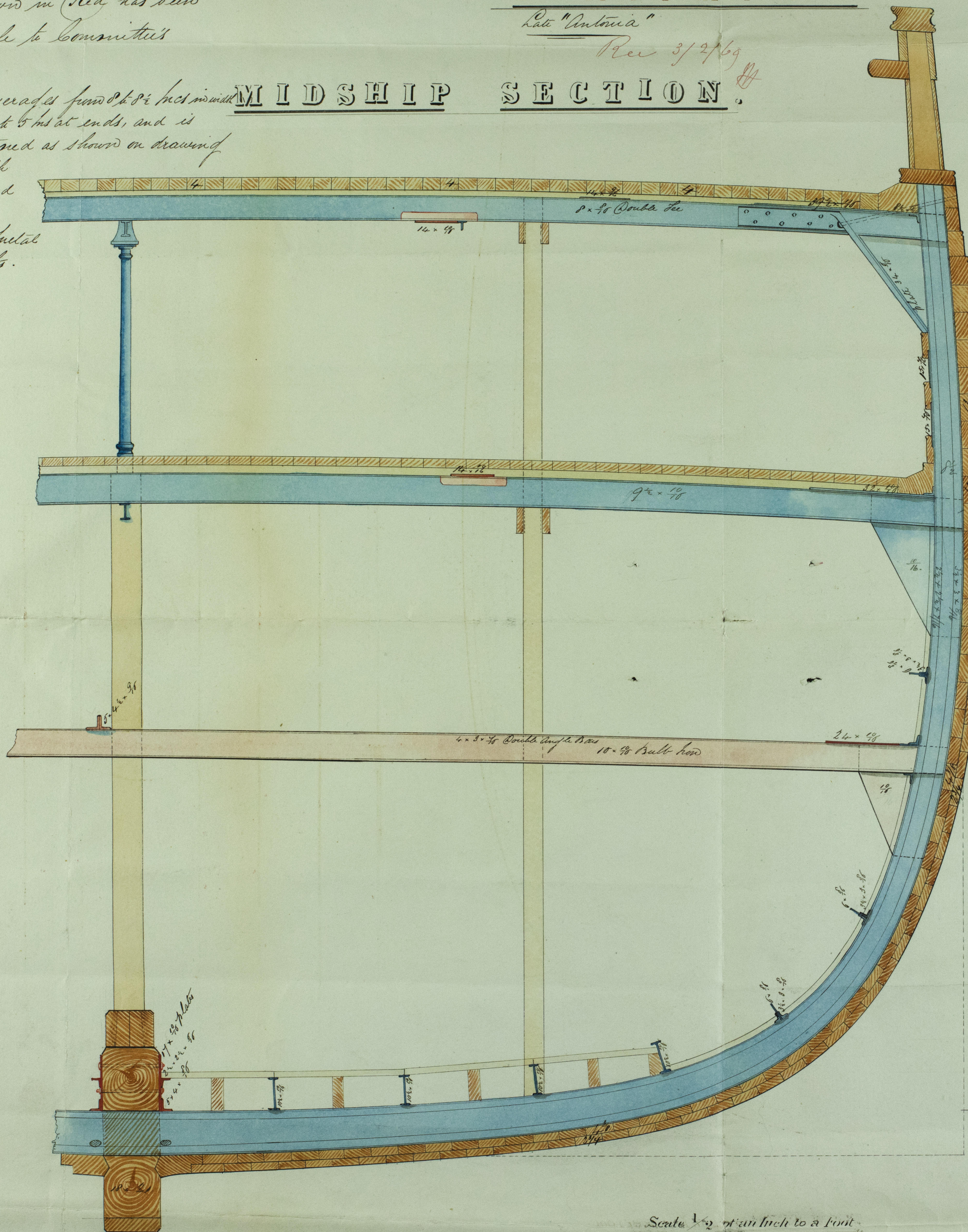
The planking averages from 8 to 12 inches in width  
 at midships, tapering to 5 inches at ends, and is  
 now through fastened as shown on drawing  
 the 5 bolts are through  
 copper, and clenched  
 in Copper Rivets.  
 The 5 are Yellow Metal  
 Nut and Screw Bolts.

# BENLOMOND.

Rate "Antonia"

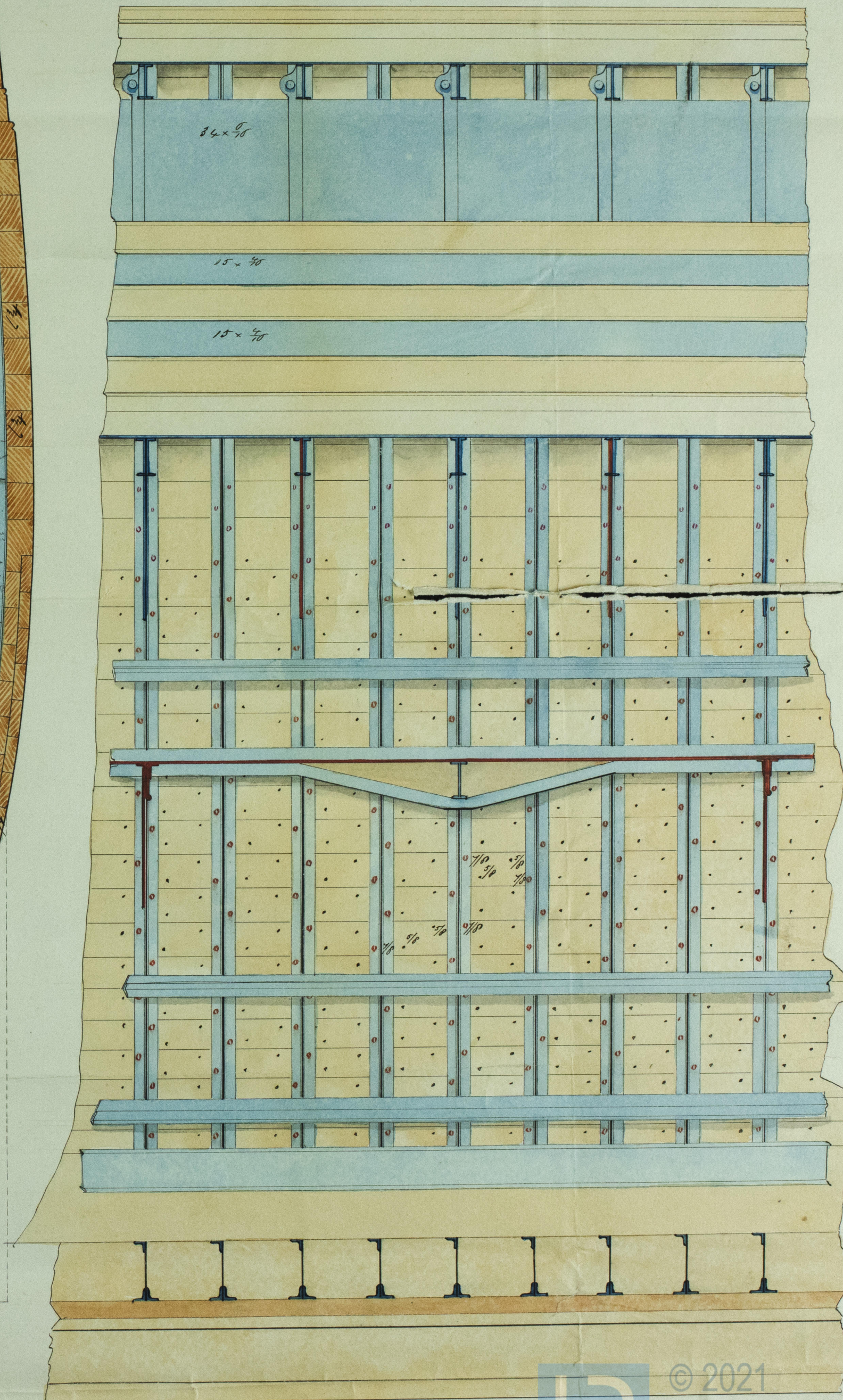
Rev 3/2/69

## MIDSHIP SECTION.



Scale 1/2" = 1 foot

## SECTION.



D. Darling



Ben Lomond  
2. Feb

"Ben Lomond"  
Late "Antonio"



© 2021

Lloyd's Register  
Foundation