



Screw Lender
No 69
Coast of
Falmouth

sp. "Penguin"
Fal. No. 4303.



© 2019

Lloyd's Register
Foundation

FAL139-0012

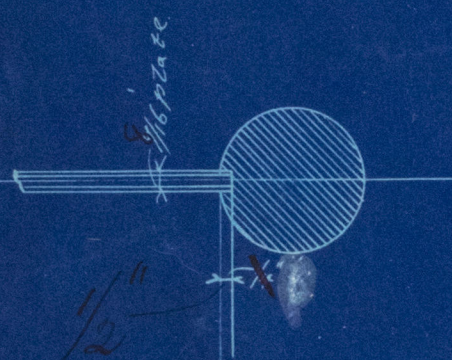
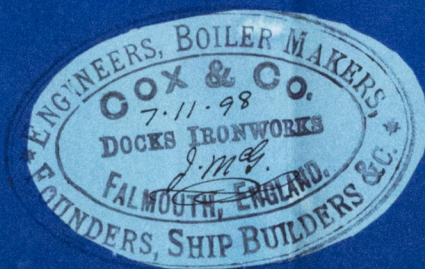
Rudder Plan Ship No. 69.

Scale $\frac{1}{2}$ " = 6 feet

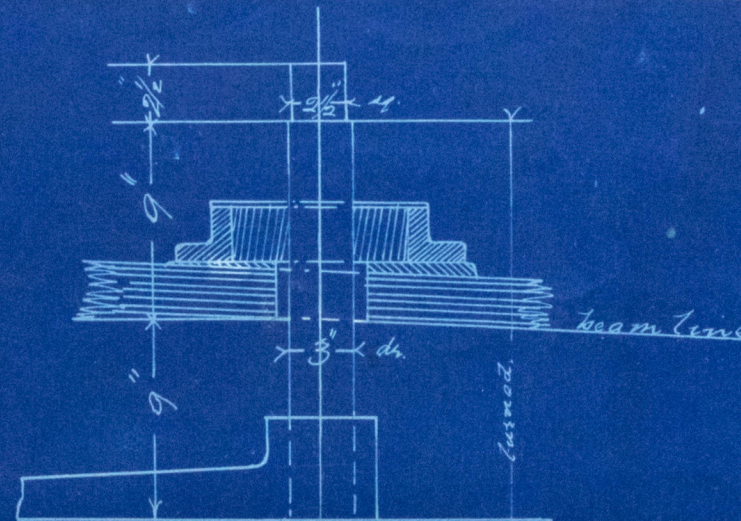
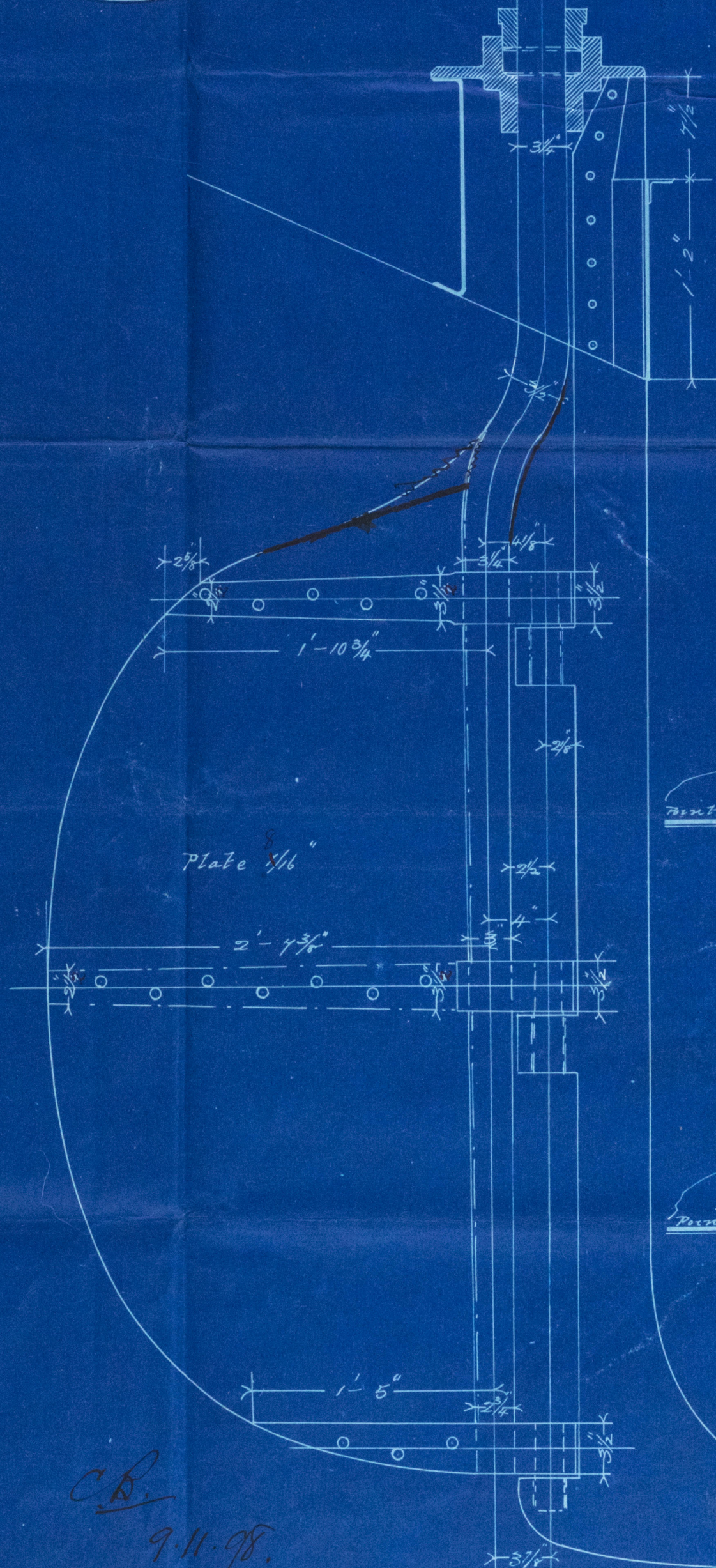
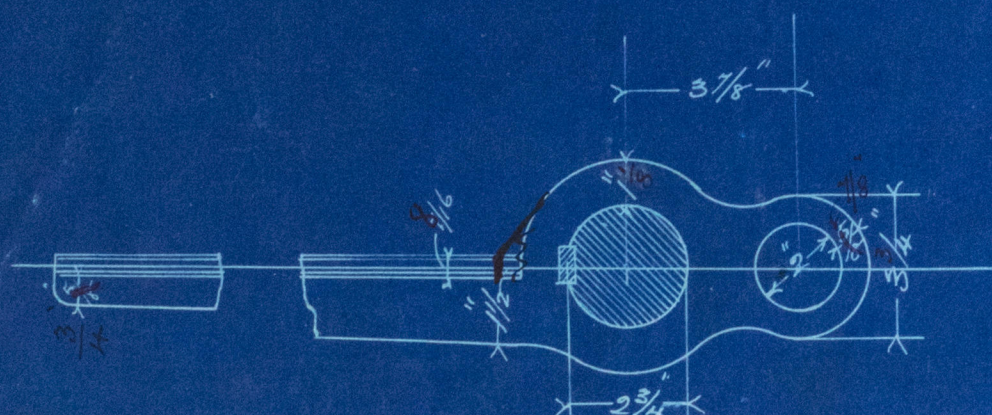
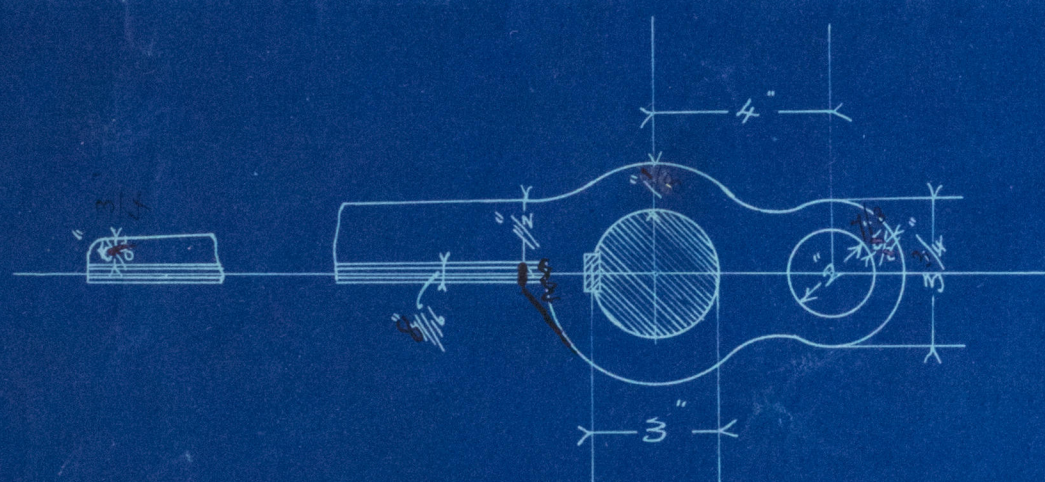
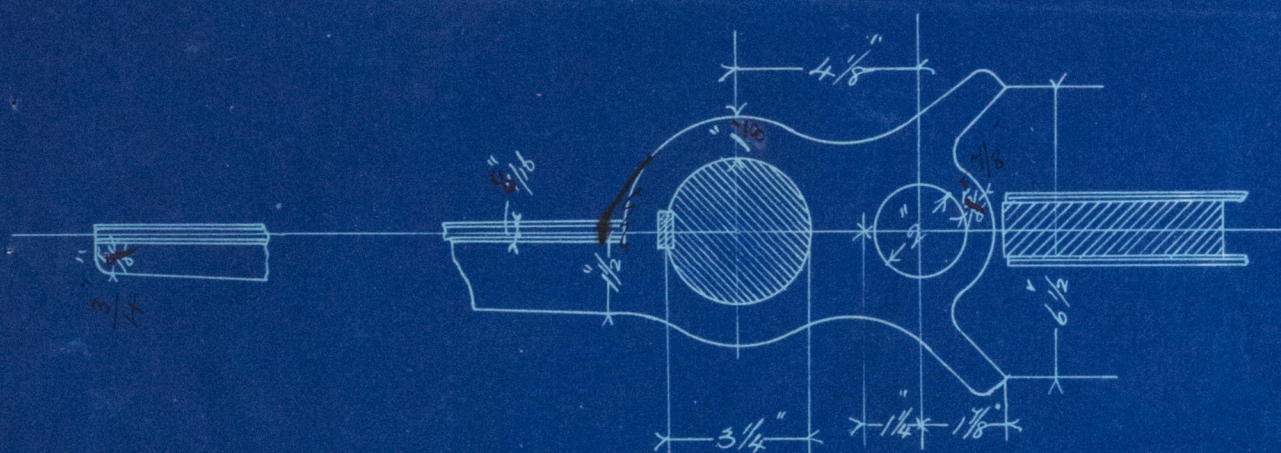
9.11.98 Ship Drawing No. 827.

Rivets $\frac{3}{4}$ " dia. spaced $3\frac{3}{4}$ " on.

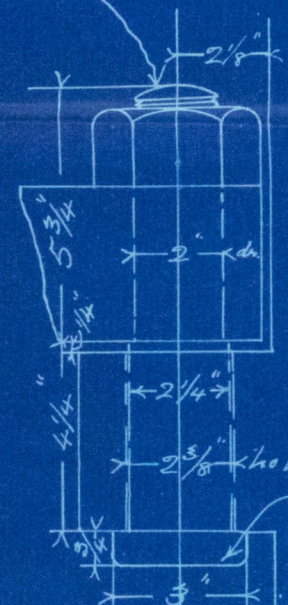
Note Rudder head increased from 3 " to $3\frac{3}{4}$ "



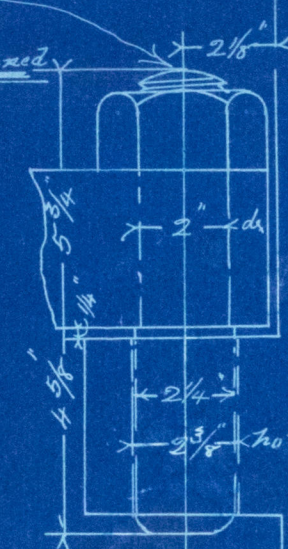
Arms shank & keyed in to round bar.



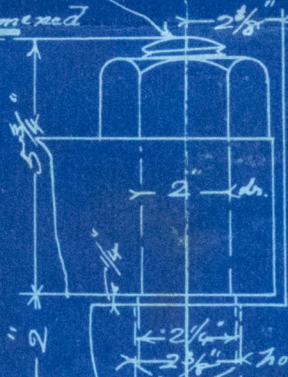
point slightly hammered



point slightly hammered



point slightly hammered



C.B.
9.11.98.

LR

SHAW-WALKER