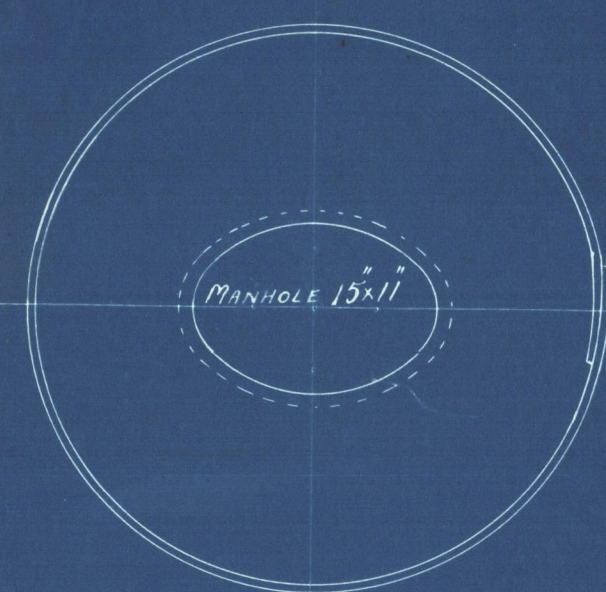
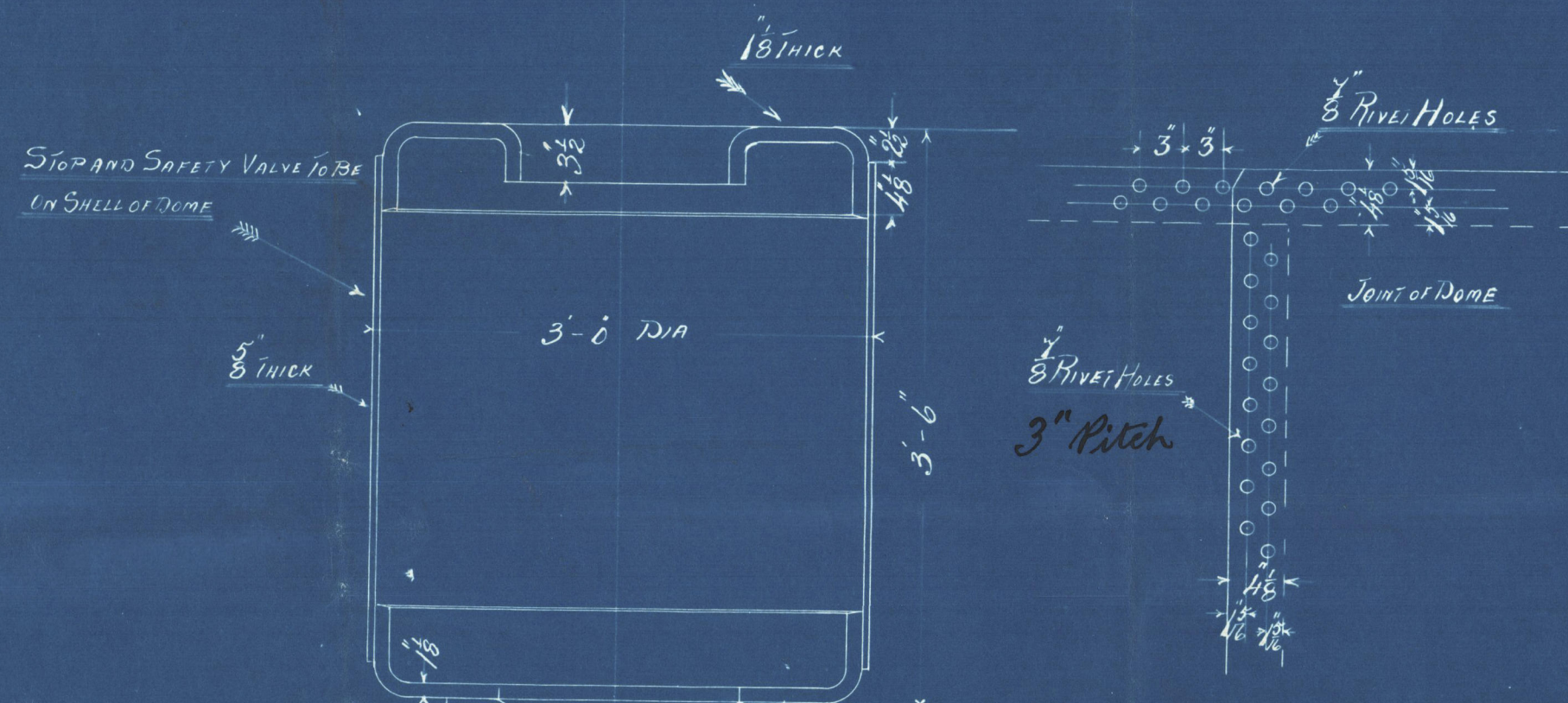


APR 3 1898
24 3 1898



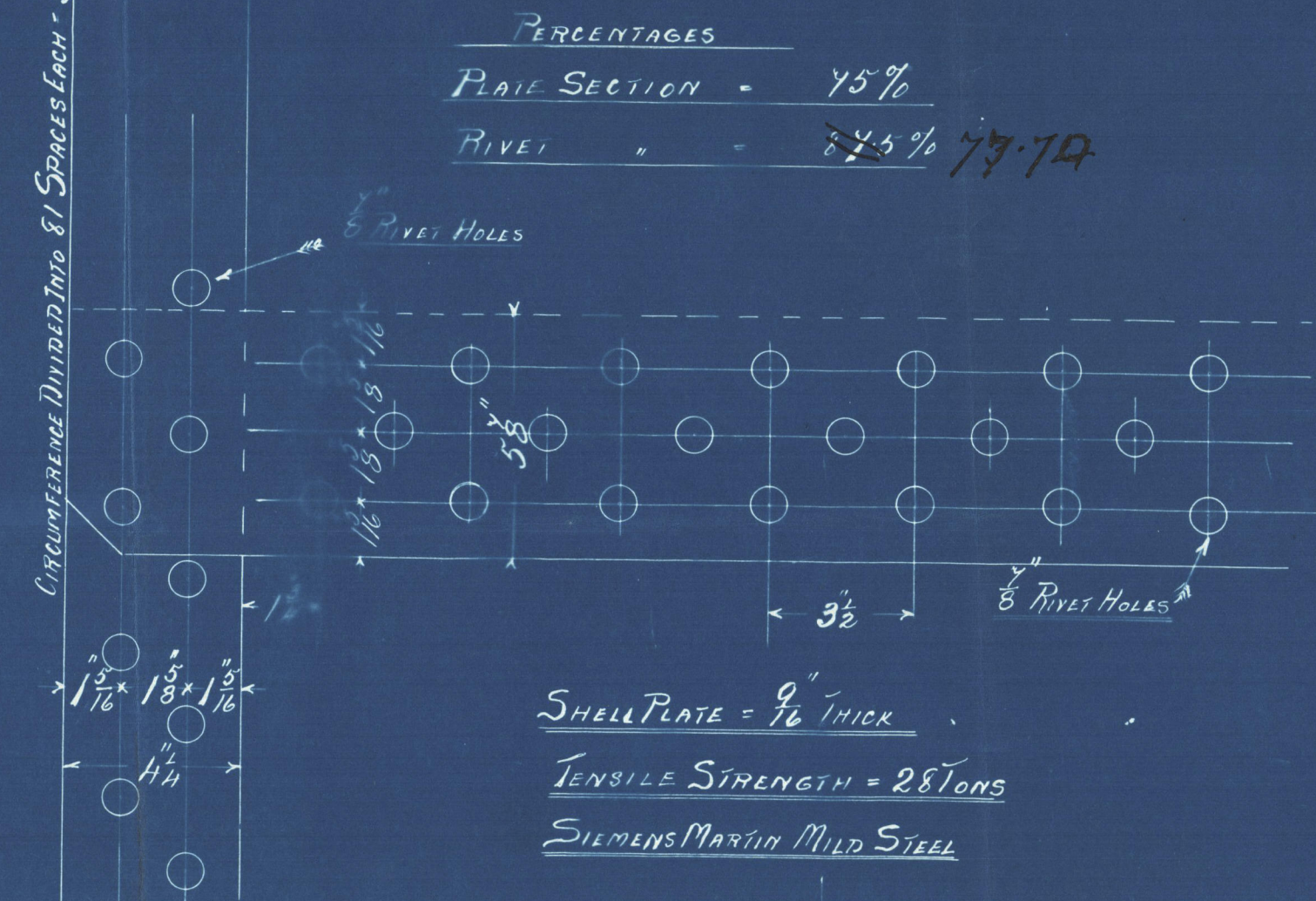
PLAN OF DOME



STOP AND SAFETY VALVE TO BE
IN SHELL OF DOME

3" RIVET HOLES
3" PITCH

JOINT OF DOME



SHELL PLATE = 9/16" THICK
TENSILE STRENGTH = 28 TONS
SIEMENS MARTIN MILD STEEL

HEATING SURFACE	
SURFACE IN TUBES	235.5 SQ FT
" FURNACES	37.9 "
" FIREBOX BRICKS	17.5 "
" SIDES	115.25 "
" TUBE PLATES	11.6 "
TOTAL HEATING SURFACE = 350.45 SQ FEET	

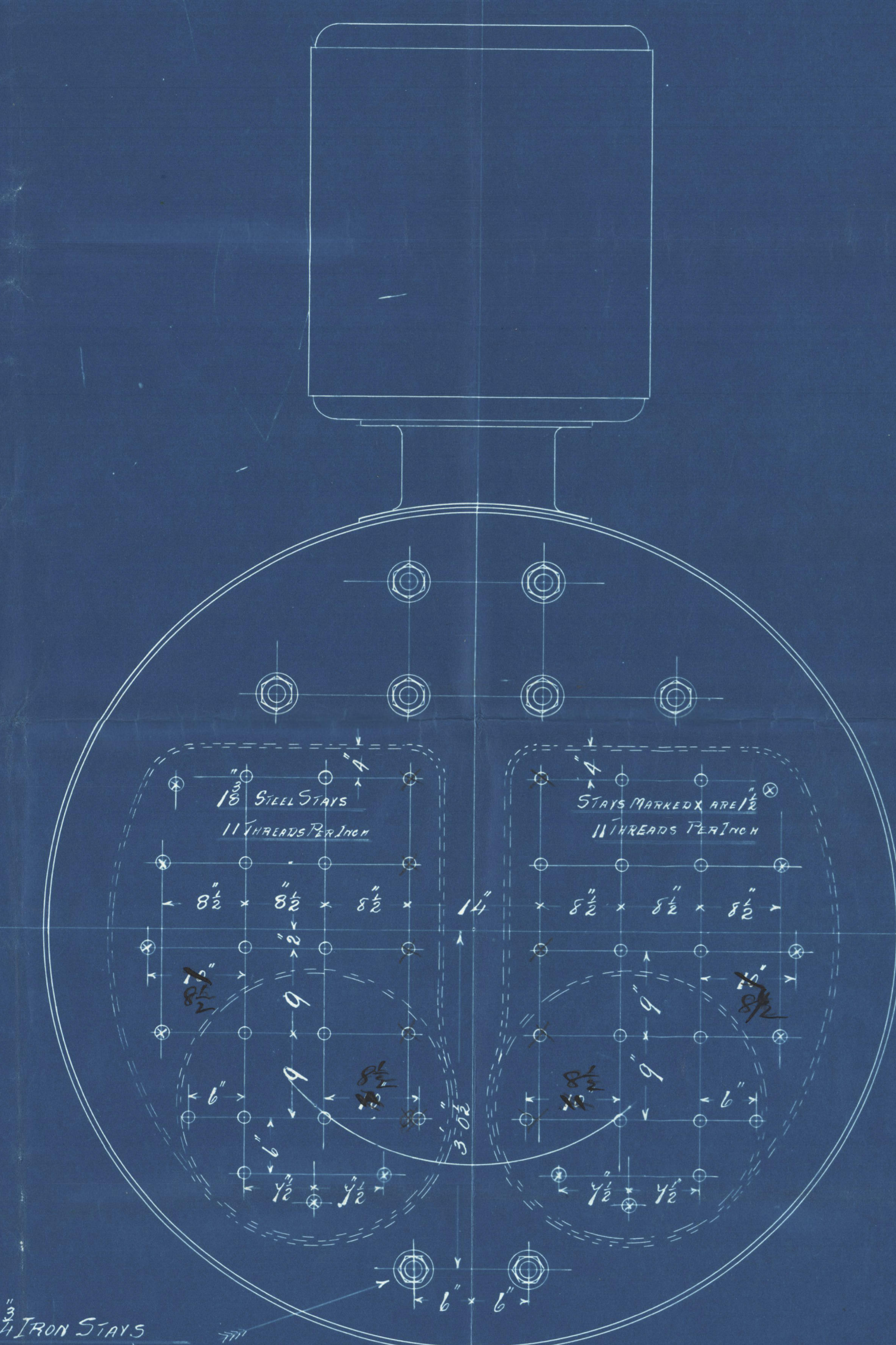
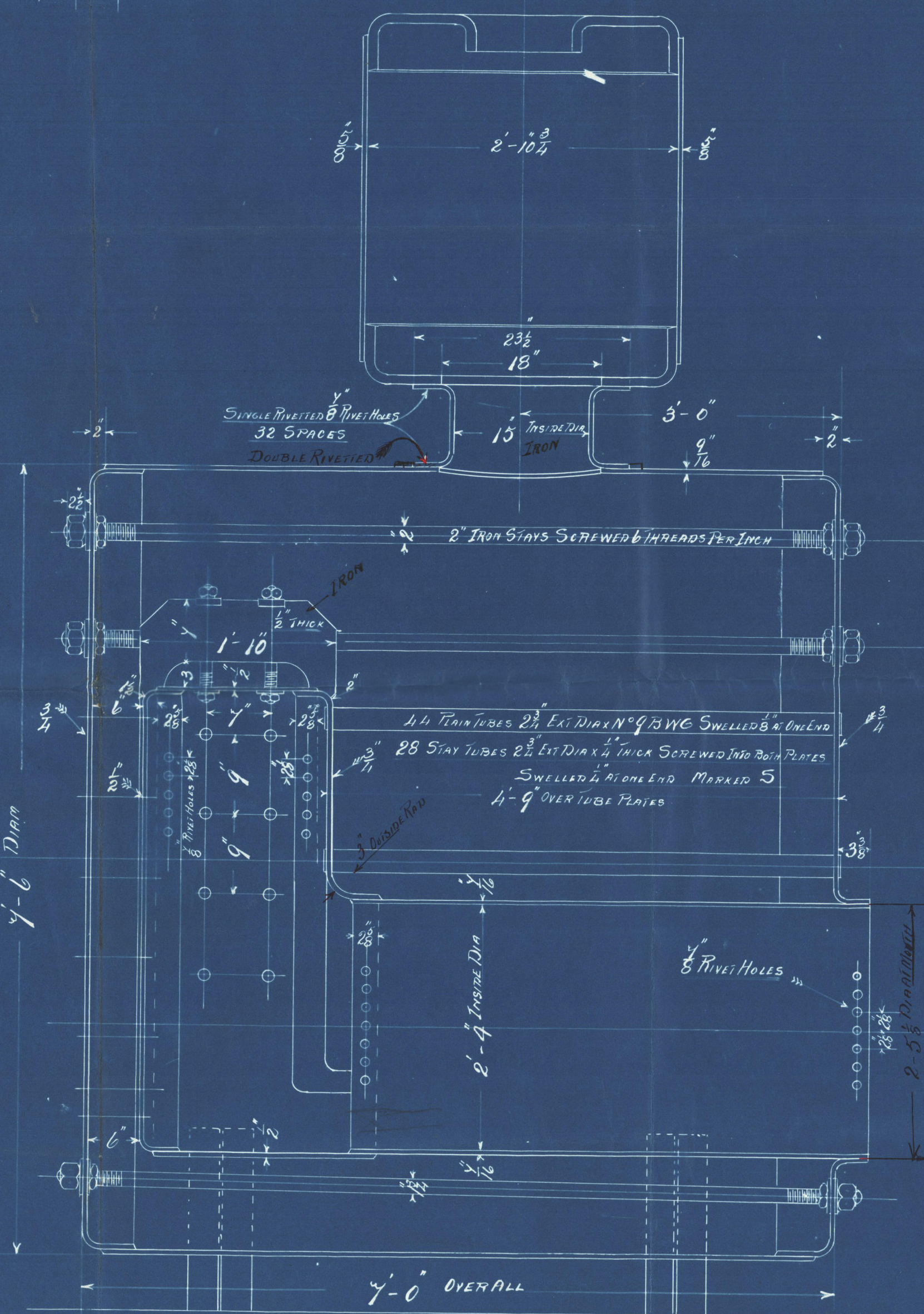
GRATE SURFACE = 20.56 FEET

FIREBARS = 4'-3" LONG

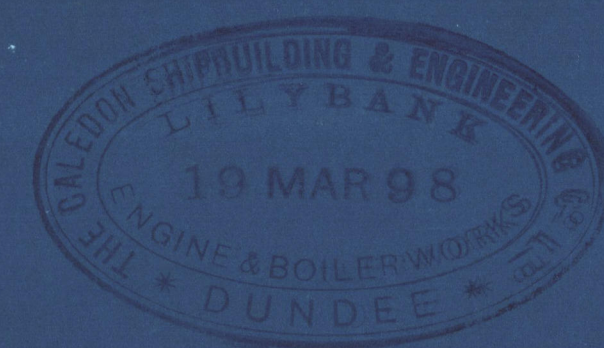
ONE PAIR OF SAFETY VALVES 2" DIA

WORKING PRESSURE = 100 LBS

TEST = 200 LBS



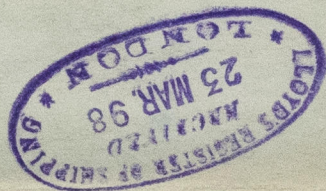
BOILER No 403
SCALE 1" = 1 FOOT
18TH MARCH 1898
WORKING PRESSURE - 100 LBS
TO THE LLOYDS SURVEY



2204
22.3.98

J.M.
23/3/98

Calidon S.B. & Co
Donkey Boiler No 403
For
S.S. No 142
S.S. "Tagus"



No 746
Lloyd's Test
200 lbs
WM-26-9-98

Dun Rpt No 6433



© 2020

Lloyd's Register
Foundation

DUN 127-0084