

- <u>HEATING SURFACE.</u> -	
TUBES - 397	Sq. FEET
FURNACES - 49	"
COMB. CHAMBERS - 70	"
<u>TOTAL - 516</u>	"

— GRATE AREA. — 22 SQ. FEET. —

— WORKING PRESSURE = 85 lbs —

TO PASS LLOYD'S AND BOARD OF TRADE.

ALL MATERIAL STEEL, EXCEPT TUBES AND STAYS.

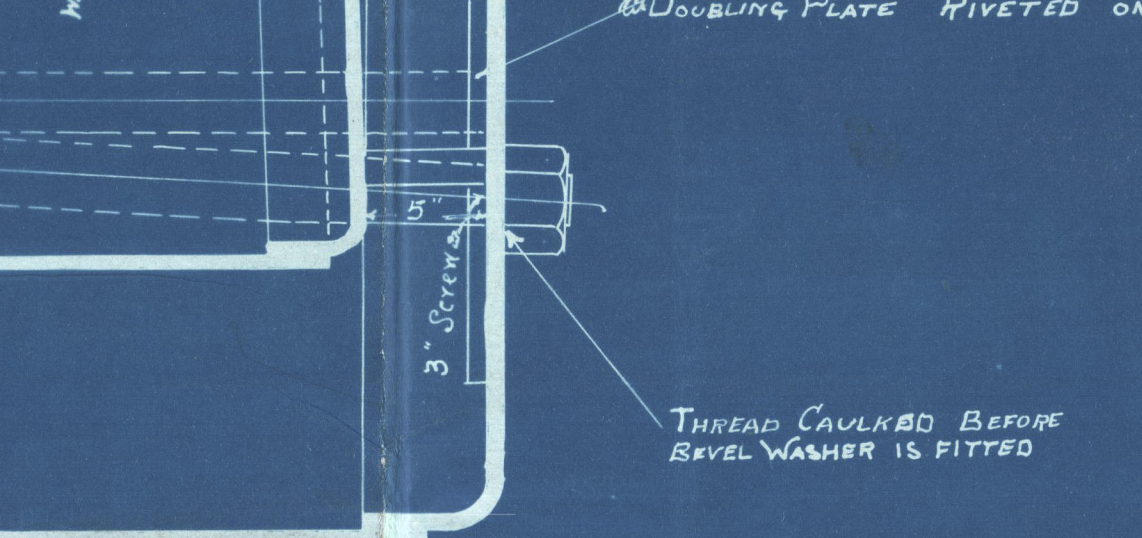
LONGITUDINAL RIVETTING.
RIVET HOLES = $\frac{25}{32}$ DIA.
PLATE SECTION = 80 %
RIVET SECTION = 12.8 % B. OF T.

END SEAMS.
PIVET HOLES = $\frac{15}{16}$ DIA.

N.A.
9.2.95

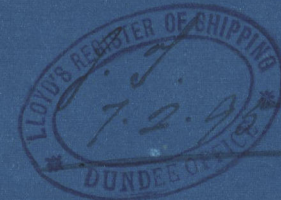
DONKEY BOILER No 331

— SCALE $1\frac{1}{2}" = 1 \text{ FOOT}$ —
— 5-2-95 —



THREAD CAULKED BEFORE
BEVEL WASHER IS FITTED

N.A.
9.2.95



Feb 14/2/95

S.
15\"/>



DRAWING OFFICE,
DUNDEE FOUNDRY.

Feb 7 189*5*

FROM
MESSRS GOURLAY BROTHERS & CO.,
FOR *Lloyd's Register*

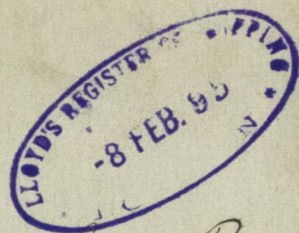
DUN 123 - 0332 (2/2)

DONKEY BOILER Nº 331

SCALE 1 1/2" = 1 FOOT

5-2-95

Lloyd's Register
Foundation
DUN 123 - 8332 (1/2)



Goulay Bros & Co
Souley Boche
No 331

No 163 S. S. Sardinia

su amended plan

Dundee Report N° 6115

DUN123-0332(1/2)



© 2021

Lloyd's Register
Foundation