

END CIRCUMFERENTIAL SEAMS

PLATE SECTION

LLOYD'S - 64.25%

BOARD OF TRADE 64.25%

RIVET SECTION

LLOYD'S - 49.64%

BOARD OF TRADE - 49.64%

RIVETS IN LONGITUDINAL SEAMS STEEL  $\frac{1}{2}$ " DIAMETER.  
RIVETS - CIRCUMFERENTIAL - STEEL  $\frac{1}{2}$ " DIAMETER.  
ALL HOLES DRILLED IN POSITION.

LONGITUDINAL SEAMS  
OUTSIDE BUTT STRAPS  $\frac{1}{2}$ " THICK.  
INSIDE BUTT STRAPS  $\frac{1}{2}$ " THICK.

PLATE SECTION  
BOARD OF TRADE 84.37%  
LLOYD'S 84.37%

RIVET SECTION  
BOARD OF TRADE 91.99%  
LLOYD'S 93.12%

See amended plan

Nº 331. ONE BOILER THUS

HEATING SURFACE  
FURNACES 171 Sq. Ft.  
COMB. CHAM. 377 " "  
TUBES 2,258 " "  
TOTAL 2,806 " "

GRATE AREA 92 SQ. FT.  
FIRE BARS 6 FEET LONG

TUBE AREA 163 SQ. FT.

STEAM SPACE 441 CUB. FT.

SHELL RIVETING  $\frac{1}{2}$ " SCALE.

WORKING PRESSURE 168 LBS. PER SQ. IN.  
TESTING PRESSURE 330

NUTS AND PLATE FACED

10'-6"

WROT IRON STAYS SCREWED INTO BOTH PLATES 6 THREADS PER INCH

12" STEEL STAYS  
9 THREADS PER INCH

130 STAY TUBES 3" EXT. DIAM. X  $\frac{3}{8}$ " THICK.  
322 PLAIN TUBES 3" EXT. DIAM. X NO. 9 L.W.G. THICK

6" C" OVER PLATES

ALL TUBES BEADED OVER IN COMBUSTION CHAMBER

17'-0" MEAN DIA.

DOUBLE RIVETED

TENSILE STRENGTH OF FURNACE  
26 TO 30 TONS.

WROT IRON STAYS SCREWED INTO BOTH PLATES 6 THREADS PER INCH

7'-5"

SCREWED STEEL STAYS 9 THREADS PER INCH  
OUTSIDE ROWS  $\frac{1}{8}$ " DIAMETER -  $\frac{1}{2}$ " UNDER THREAD  
OTHER ROWS  $\frac{1}{8}$ " DIAMETER -  $\frac{1}{2}$ " UNDER THREAD

Intentional  
screwed  
stays to be  
filled here

3/4" doubling  
plate

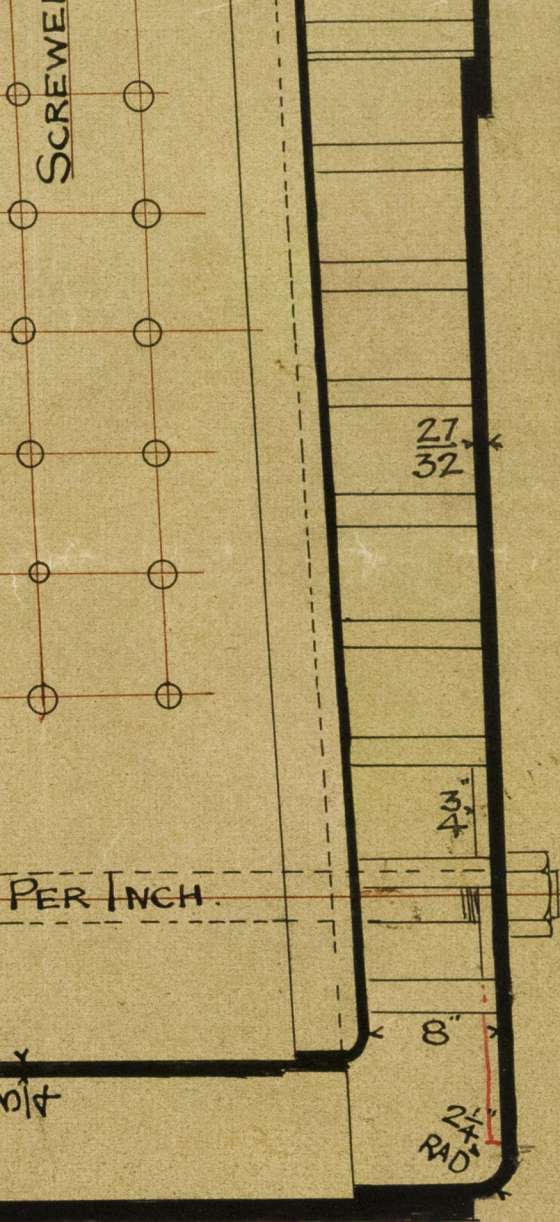
TO BE CONSTRUCTED OF SIEMENS MILD STEEL TO LLOYD'S AND BOARD OF TRADE REQUIREMENTS

SCALE 1" = 1 FOOT.

© 2021

Lloyd's Register  
Foundation





DRAWING OFFICE,  
DUNDEE FOUNDRY. Jan 17 1895

FROM  
MESSRS GOURLAY BROTHERS & CO.,  
FOR Lloyd's Register

DUN 123 - 0322 (212)

AND BOARD OF TRADE REQUIREMENTS

SCALE 1" = 1 FOOT.



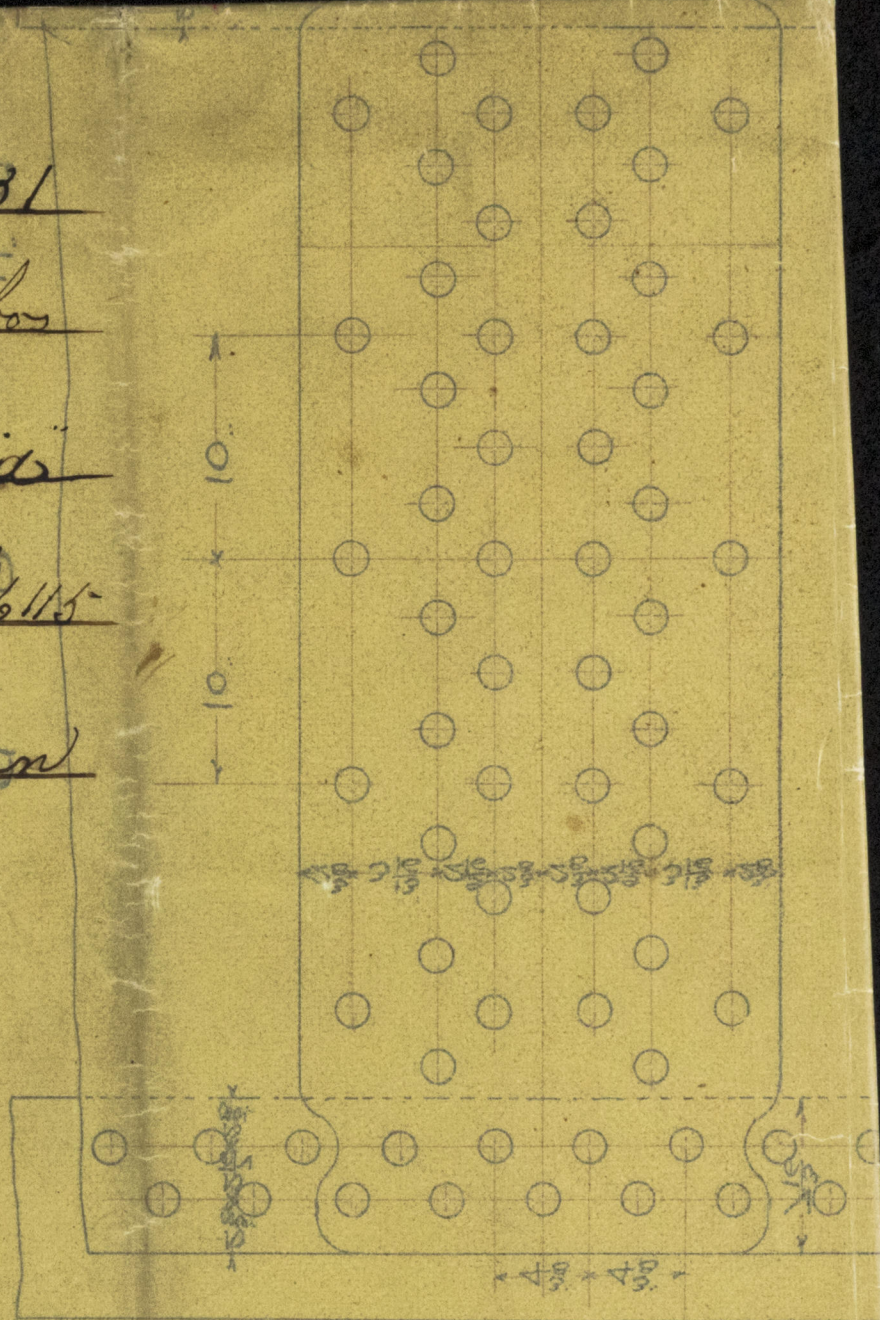
Main Biler N° 331

Houlay Bros & Co

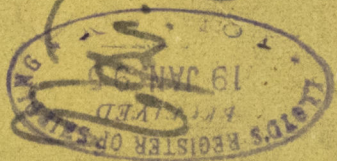
N° 163 of Sardinia

Dundee Report of 115

See Amended Plan



DUN 123-0322 (1/2)



BOILER OF IRON = 78.00%

LLOYD'S = 78.00%

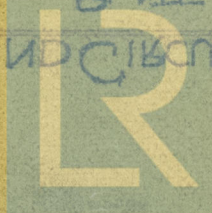
STEEL SECTION

BOILER OF IRON = 78.00%

LLOYD'S = 78.00%

STEEL SECTION

END OF CERTIFICATE



Lloyd's Register  
Foundation