



135/ "Princess Victoria"
Dundee Report of 5-9-97.

Steel Screw Steamer No 123 245' x 35' x 16'2" MOULDED

25.7.93.
6.10.93
30.10.93
28.12.93.

Post Bridge 3.3 p.p. = Scale 1/2" to a foot
Forecastle 5.3 p.p. Twp 4.20

Amidships 30' x 20'
Aft 24' x 20'
Forward 28' x 20'
angles 3' x 3' x 20'

Pops & Bridge Beams 6" x 12" spaced 16" Aft 18" Forecastle Beams 6" x 12" spaced 16" Aft 16" Half Girth 30.55 Beam 17.50 1st 16.875 2nd 64.955 Length 243.66 2nd 15826.93 10026.93 x 1/8 = 1253.37 Equip No 17619.42 Class 100 Steel	Prop about 156' 0" Bridge 16' 0" Forecastle 50' 0" Sum of Sections 222.0 Depths to length 14.4 Breadths 6.9
--	--

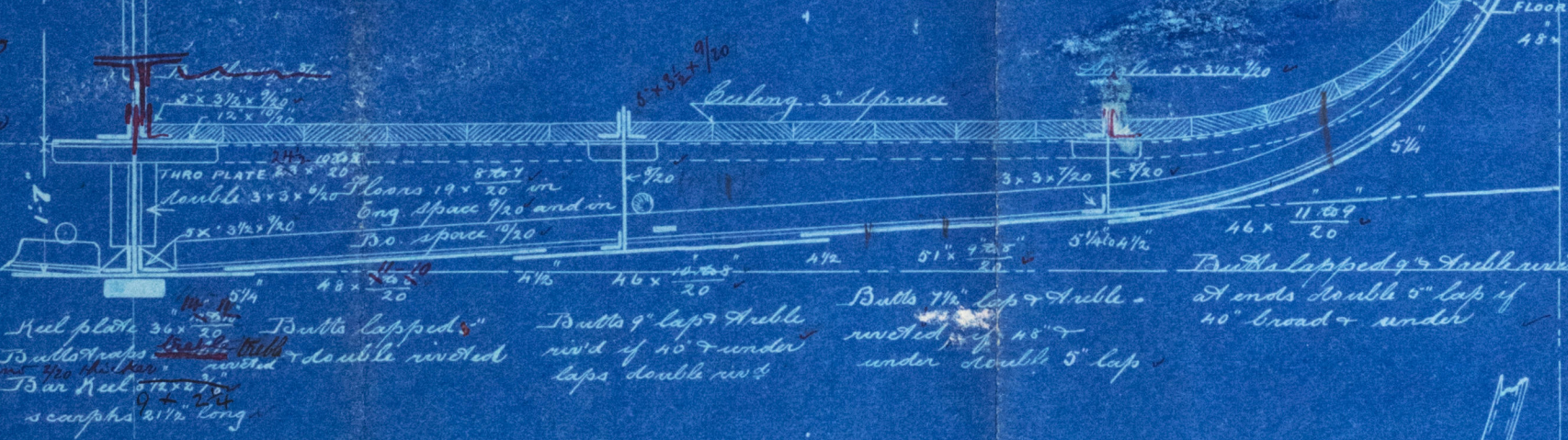
MAIN DECK

FRAMES 4" x 3" x 7/16" to Main, Pop, Bridge & Forecastle decks
 Frames spaced 23" apart
 REVERSE FRAMES 3" x 3" x 7/16" to Lower & Main Decks alternately double in 6' B.
 Space to bilge stringer. Heavy riv. 3/4" x 3/4" x 1/2" on Eng. floors & two floors under Boilers
 BULKHEADS 7/8" Stiffeners 4" x 3" x 20" Coll. B.H. as per Section 22
 STEM 8" x 2 3/8" KEEL 7/8" DIAM. STERN POST 8" x 5"
 RUDDER STOCK 7/8" DIAM. KEEL Rudder of single Plate 1/2" thick
 TRANSOM PLATE 28 1/2" x 7/20"

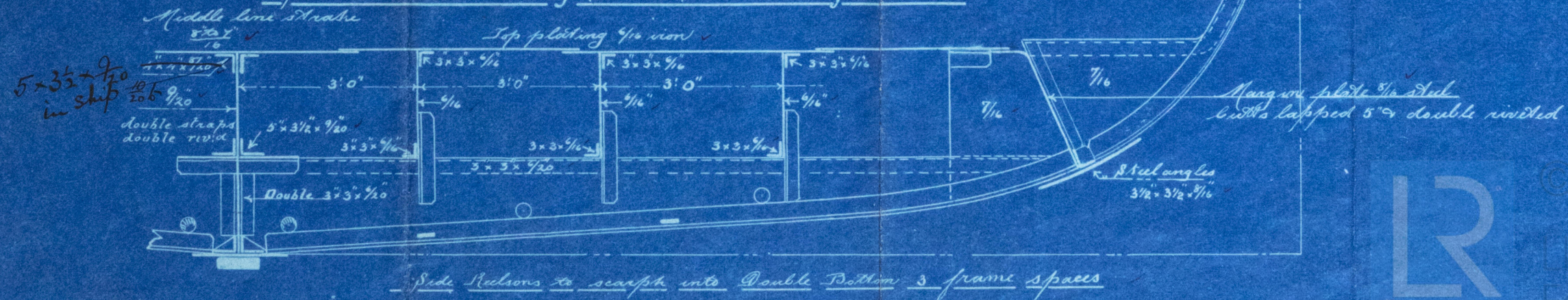
LOWER DECK

Anchors & Chains

2 Bowers 2 9/16" cuffs stockless 240 faths 1 1/2" Stud chain cable	Sparling 2 1/2" x 7/16"
1 Bower 2 5/16" " 75 " 1" Stream chain or 3/4" S.W. cope iron	
1 Stream 8 " " ex stock 90 " 10" Hemp or 5/16" S.W.	
1 Hedge 4 " " " 90 " 8" Hawseers	
	90 " 6" Warps



Section at Fore End of Double Bottom in After Hold



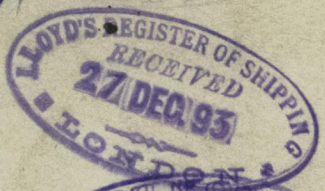
Midship Section
Steel Screw Steamer

N^o 123.

"Princess Victoria"

built by
W. B. Thompson & Co. Ltd.
of Dundee.

Dundee Report N^o 5959.



DUN122-0271