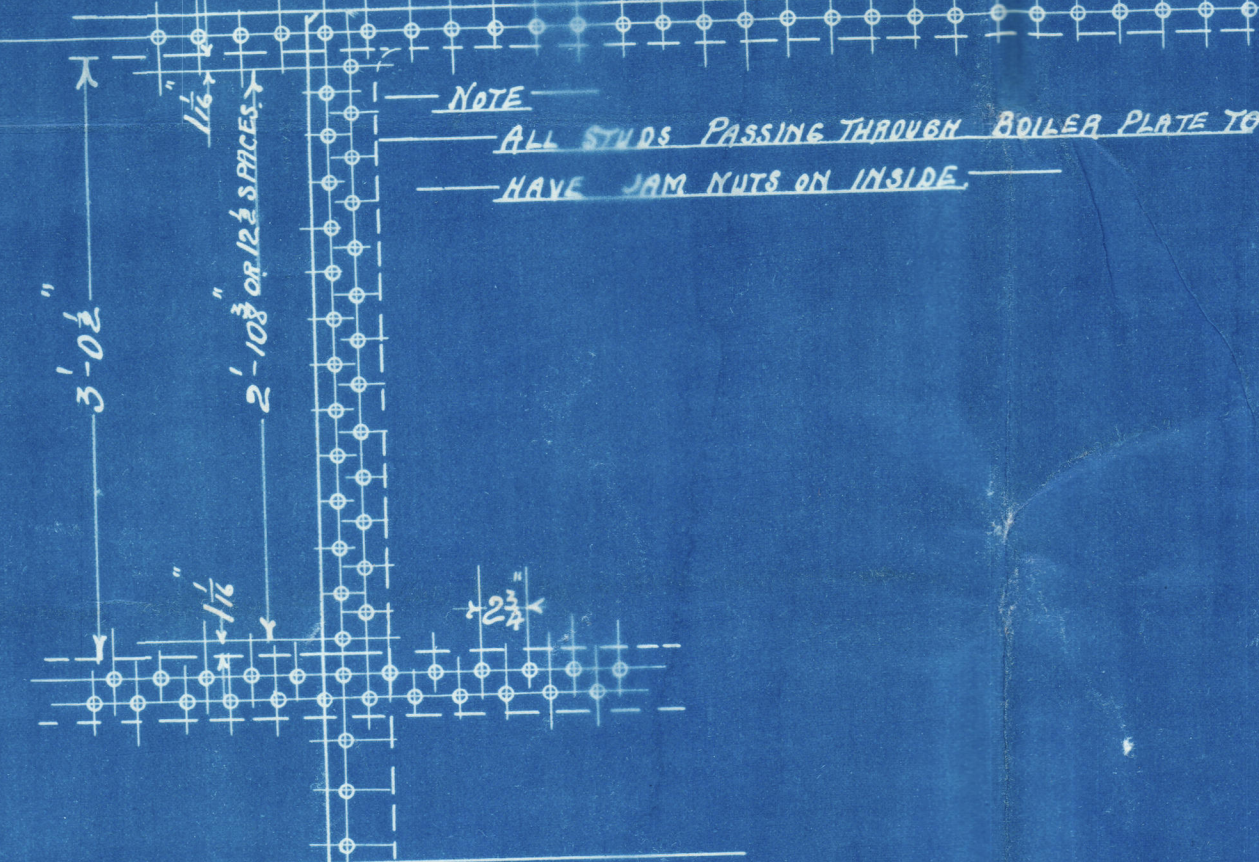


SHELL PLATES $\frac{7}{16}$ " THICK - RIVET HOLES $\frac{13}{16}$ " DIA. ALL HOLES BORED IN POSITION.
AFTER PLATES ARE BENT. TENSILE STRESS 29 TONS.
BOARD OF TRADE RULES. WORKING PRESSURE 20 LBS PER SQ INCH.
PLATE SECTION 70.4 PERCENT. TEST " 160 " " "
RIVET " 76.4 " " F-54. SAFETY VALVES
WORKING PRESSURE = 20 LBS PER SQ INCH. ONE PAIR EACH VALVE 2" DIA.



W.A.
24-5-93



22/5/93

1.s.s! "Glasgow!"
~ Dundee Report N° 5953. ~

VERTICAL BOILER N^o 363
SCALE 1" = 1 FOOT 17TH MAY. 1893.

Donkey Boiler
N^o 363.

for "Glasgow"
S.S. ~~Stirling~~
W.B. Thompson & Co
S.S. N^o 122.

Dundee Report N^o 5953

N^o 666.
Lloyds Test.
160 lbs.
A.C. 22/2/3



Lloyd's Register
Foundation

DUN122-0176