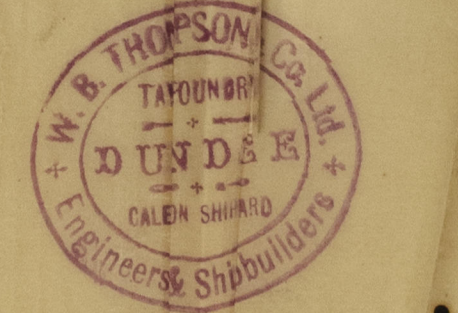
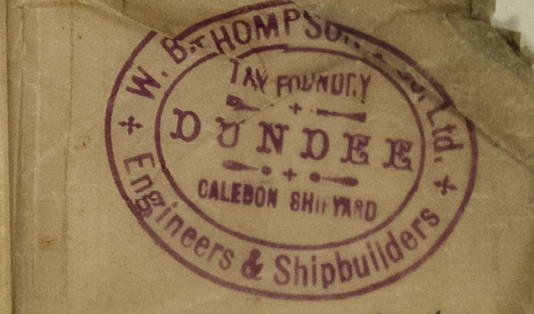


TUE 11 NOV 93
FRI 21 NOV 93
13.5.91



S S No 105: *St. Pregrina*

SCALE 1/4 INCH TO A FOOT

Dundee
Report No. 105

22nd Oct. 10
STEAM
STEERING
GEAR

TRUNK
HATCHWAY

CABINS

TEMPORARY PASSENGER
ACCOMMODATION

CARGO SPACE

WATER BALLAST

WATER BALLAST

DUNDEE-0167

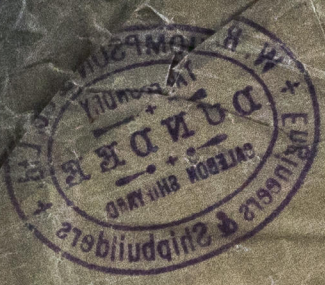


look down at axis of opening

Plan of Engine & Boiler Space to be submitted later on.

100 ft x 20 ft x 10 ft

Beams on every frame of Bulk 3 1/2 x 3 1/2 built angle 3 1/2 x 3 1/2



GALLEY

STALLS

CARGO

STOVE
OLD

SPACE ON

TAN
EN

DUN118-0167

