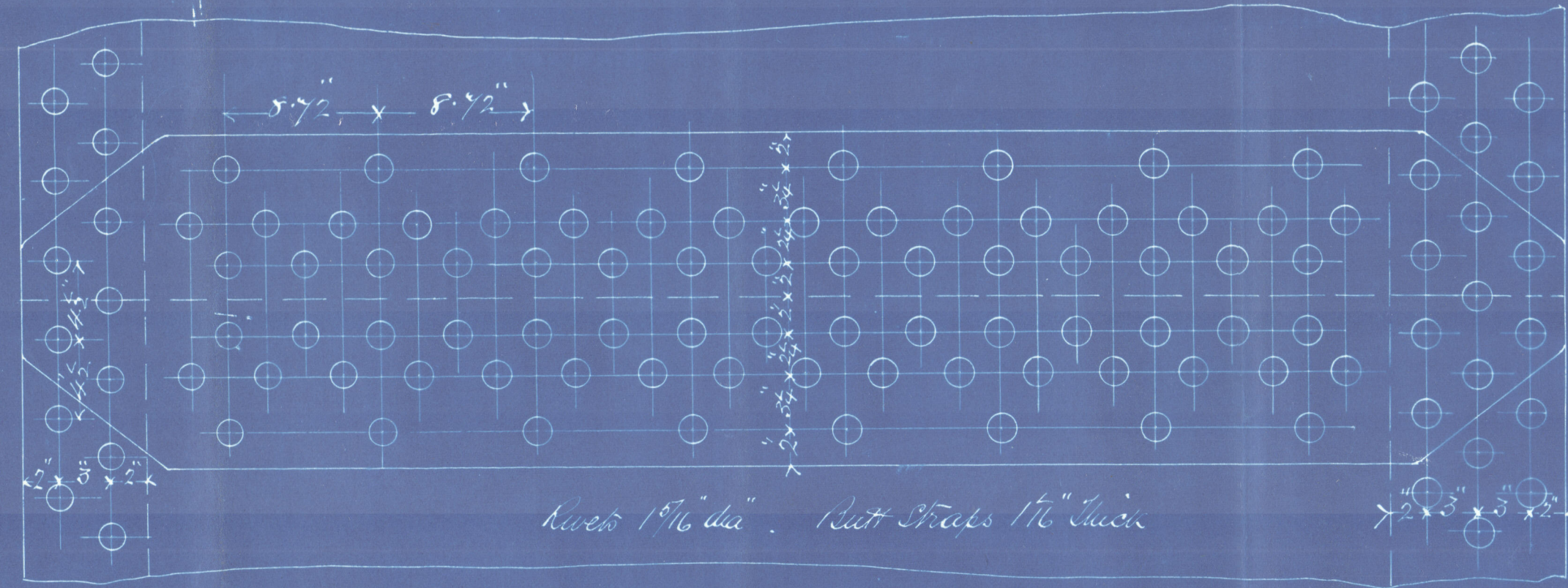
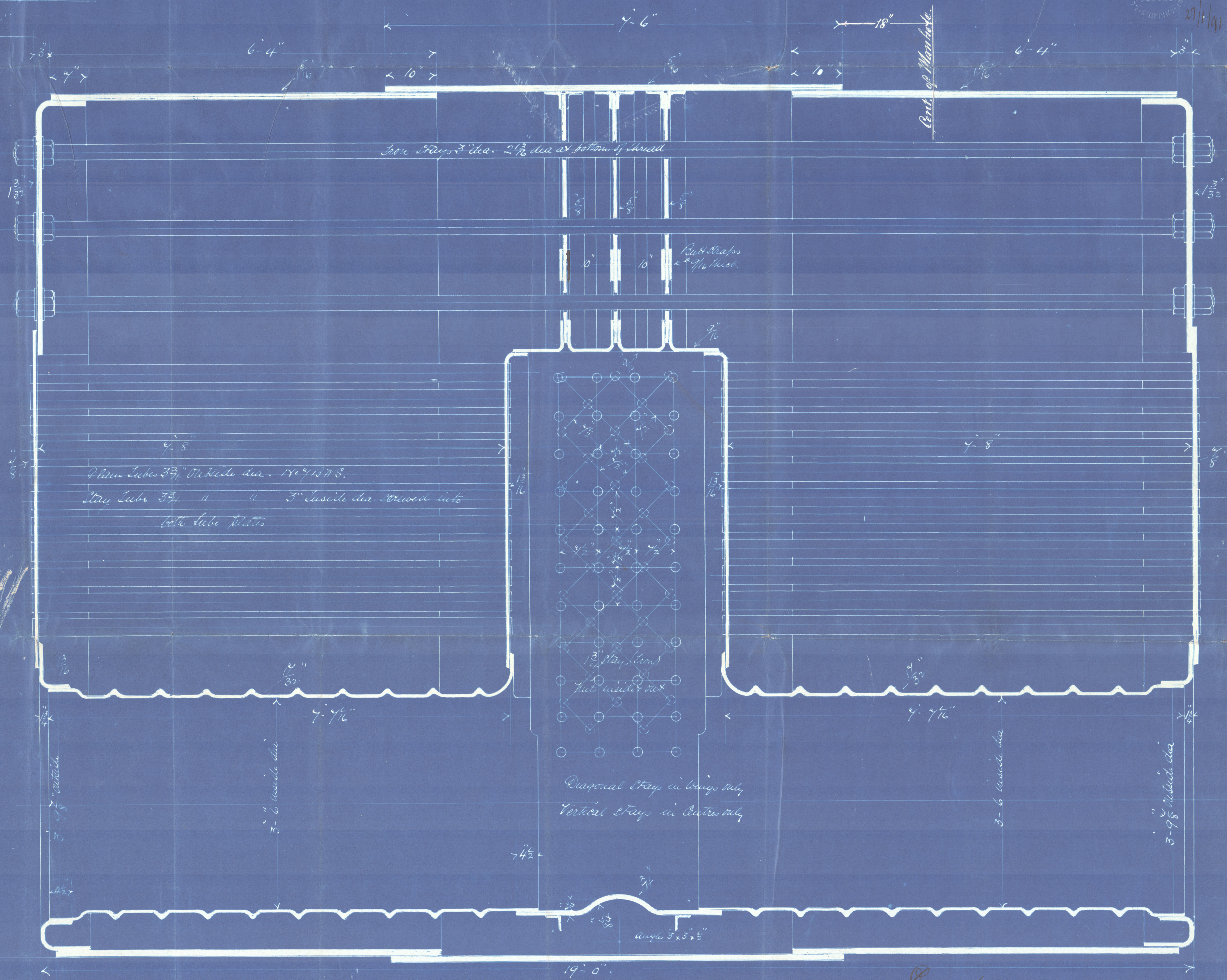
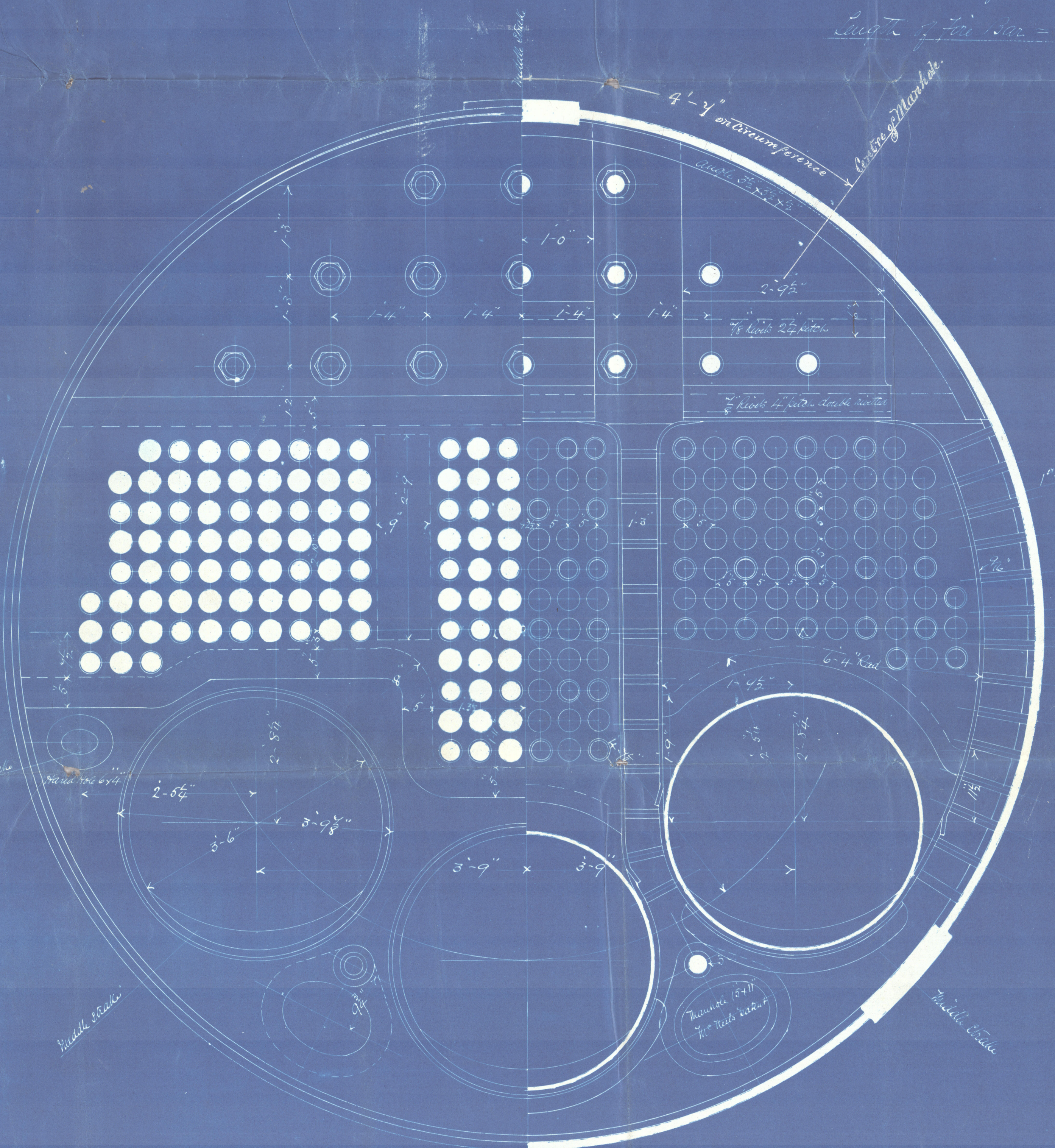


Dec 29, 1911

Heating Surface
 Tubes — 3000 sq ft
 Other — 498 sq ft
 Total 3498 sq ft in the boiler
 6997.4 sq ft in two boilers
 Total Grate Surface = 190 sq ft
 Grate 17 in dia = 4 sq ft



Boiler constructed wholly of steel excepting
 Tubes, Rivet Rods & Stay & Long Stay
 which are of iron
 Shell plates 1 1/16 inch thick
 Percentage of joint = 84.95%
 Working pressure
 Tensile stress = 29 tons
 Manhole flange 17 1/2 x 13. Ring 6 1/2 x 1 1/4



NA
 29-1-91

Dundee
 Report No 637
 St. Peregrine
 BOILERS Nos 326 & 7

Working Pressure 165 lbs
 Testing 330 lbs
 Scale 1" = 1'00"
 Lloyd's Register Foundation
 JUN 15 1915

Amended.
Main Papers

Nos. 326-4.

—s— "Peregrine."
(No. 105.)

St. B. Thompson
Esq. La

No 606
Lloyd's List
330 lbs.
Lb. C. 15/7/91.

Dundee
Report No 637



© 2020

Lloyd's Register
Foundation

UN118-0166