

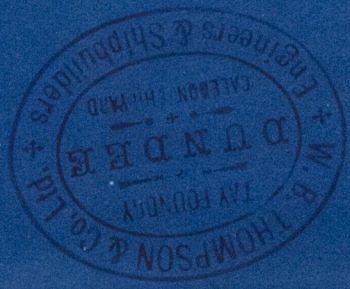
Steel S S

No 106

SCALE 1/2 INCH TO A FOOT

Length between perpendiculars 245'-0"
 Co. inside Stem and Stern Post 243'-8"
 Breadth Moulded 34'-0"
 Depth Co 16'-8 1/2"
 Co. in Hold to floors 15'-10 1/2"

Berlin
 Dundee
 Report No 3629



22 Oct 90

POOP BRIDGE & FCSL. DKS

3 Wood deck

Ties 9 x 7/16

30 x 7/16 to 24 x 7/16
3 1/2 x 3 x 7/16

Single angle 6 1/2 x 3 x 7/16 Spaced 46"
 Fecl. beams of bulb 6 1/2 x 7/16 and double 3 x 3 x 7/16 Spaced 46"

Hull Girth 30.41
 Add Beam 17.60
 Depth 17.46
 1st Number 64.87
 Length 243.66
 2nd Number 15806.22
 15806.22 x 8 x 243.66 = 1281.18
 Equipment No. 17087.40

Poop Bridge house
 and Forecastle
 Sum of lengths about 158'-0"

Depths to Length 13.95
 Beams 20 7-16

MAIN DECK

3 1/2 Wood deck

Complete Steel deck 4/20 Dble butts for 1/2 length

35 x 10/20 to 28 x 7/20 1/20
 butts 7/20 thicker for 1/2 length
 4 1/2 x 4 1/2 x 9/16 8/20

Bulb 8 x 7/20 to 7 x 7/20 double angles 3 x 3 x 7/20 Spaced 46"
 Curve 8 1/2 Single angle on Hatchway beams 4 x 3 x 20

Frames 4 x 3 x 7/16 Spaced 23" to main Poop Bridge & Fecl. decks
 Rease Frames 3 x 3 x 7/20 to lower Main Decks after hatch
 Double in E. & B. Space to upper Bidge Stringer

2 1/2 Bulkheads 6 1/2 B. Ad. bars 4 x 3 x 7/16
 Floors 19 x 8 1/2 in Engine Space 20 in Boiler Space 20 Transom 28 1/2 x 20
 Stem 1 x 20 Stern Post 1 x 20 Hatchway beams 5 x 3 1/2 x 9/16 8/20

Covering plate 8 1/2 x 7/20

30 x 7/20 to 24 x 7/20
 Gussset plate 4 x 4 x 8/16 7/20

Bulb 4 1/2 x 7/20 and double 4 x 4 x 7/20 on every 10th frame

5 x 3 1/2 x 9/16 8/20
 7/16 on alternate frames

N.B The following to be of iron:- Ribs, Keel, Stern & Stern Posts,
 Rudder, Beam Pillars, Girders and Top of Double Bottom,
 Coal Bunkers, Bulkheads, Shaft Tunnel, E and B Casings,
 Hatchway Comings, Poop. Bridge, Forecastle and Bulwarks.

2 1/2 diam
 3 1/4 of 16 main deck

Anchors & Chains

2 Bowers 23 1/2 270 faths 1 1/2 Stud
 1 Bower 20 cuts 75 " 1 chain or 3/4 Steel wire
 1 Stream 8 each 90 " 10 Hemp or 3/4
 1 Kedge 4 ex Stock 90 " 8 Sawyers
 1 Do 2 90 " 6 and Warps

Rider 11 x 12 1/2
 1 Do 2
 16 x 12 1/2 Dble butts straps
 16 x 12 1/2 Dble butts straps
 16 x 12 1/2 Dble butts straps

Ceiling 2 1/2

8/20 Intercoastal

3 x 3 x 7/20
 Intercoastal 7/20
 for 1/2 length

Bulb 8 x 7/20
 for 7/5 length

5 1/2 to 4 1/2
 Floor height
 11 to 9 1/2
 1/20 thicker 7/20 thicker
 and 3/20 where over 40"
 for 1/2 length

Rolling hoops for over 7/5 length
 of bulb 7 x 7/16 angles 3 1/2 x 3 1/2 x 7/16

Keel 8 1/2 x 2 3/8

36 x 11 1/2 to 10 1/2
 5 1/4 to 4 1/2
 1/20 thicker 7/20 thicker
 where over 40"

17'-0"
 1/20 thicker 7/20 thicker
 where over 40" broad and 3/20 where over 40"
 for 1/2 length

In Holds 7/16
 In E. and B. Spaces 7/16

Ceiling 2 1/2

4 x 4 x 8/16 7/20
 9/16 8/20
 double Straps
 double rivet

3'-0"

3'-0"

3'-0"

3'-0"

2 1/2 x 3 1/2 double butts 7/16

3 1/2 x 3 1/2 x 7/16

LR

DUNDEE 10084

Midship section
of
Steel Scr. Stmr.

No. 106.

J. B. Thompson
Esq. Lt.

Yorkshire Coal
& Steam Ship
Co. Goolle.

Dundee.

Report no. 5629.

L. L. "Berlin"

"River Ribble"



Lloyd's Register
Foundation

DUN118-0084