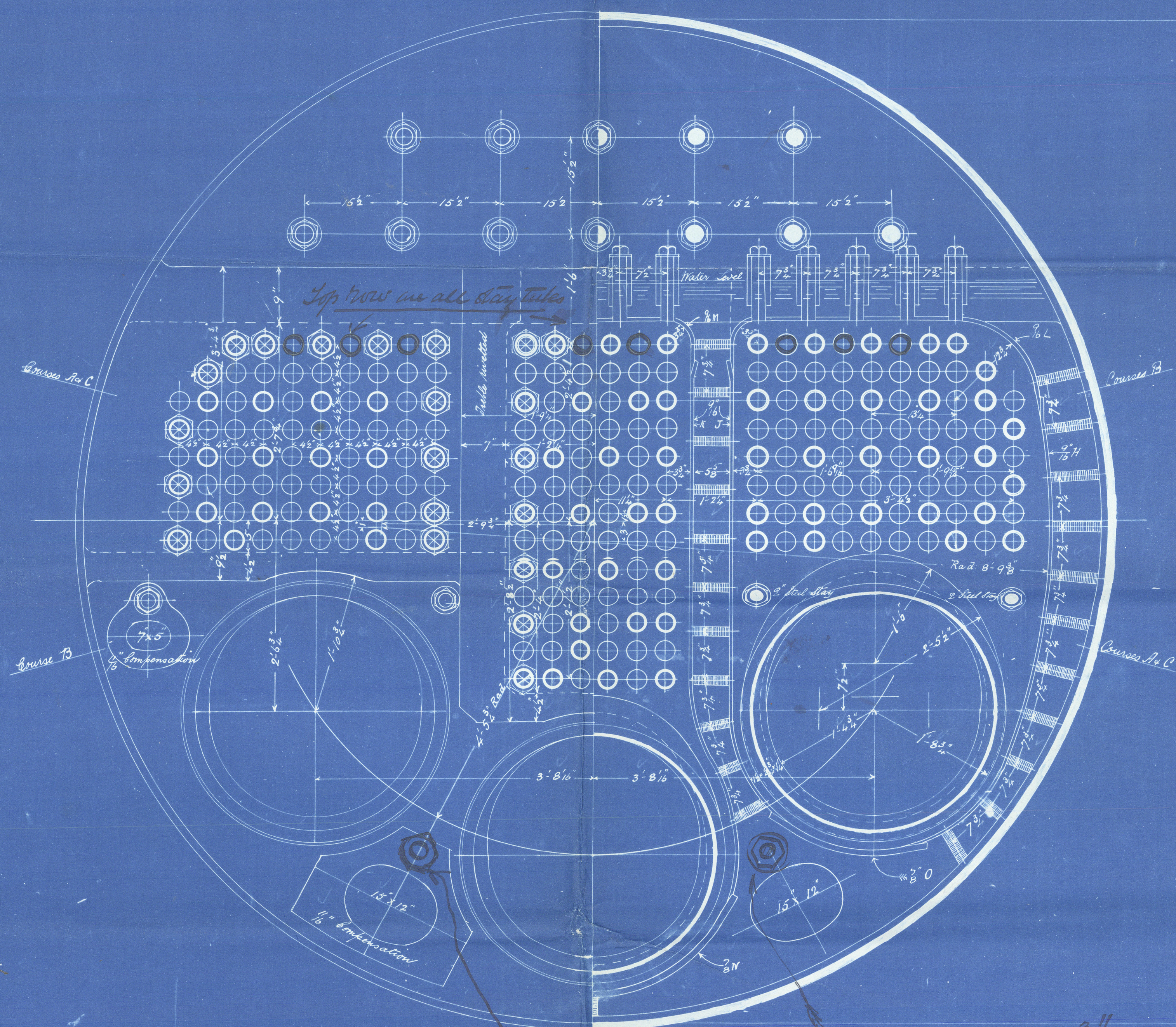


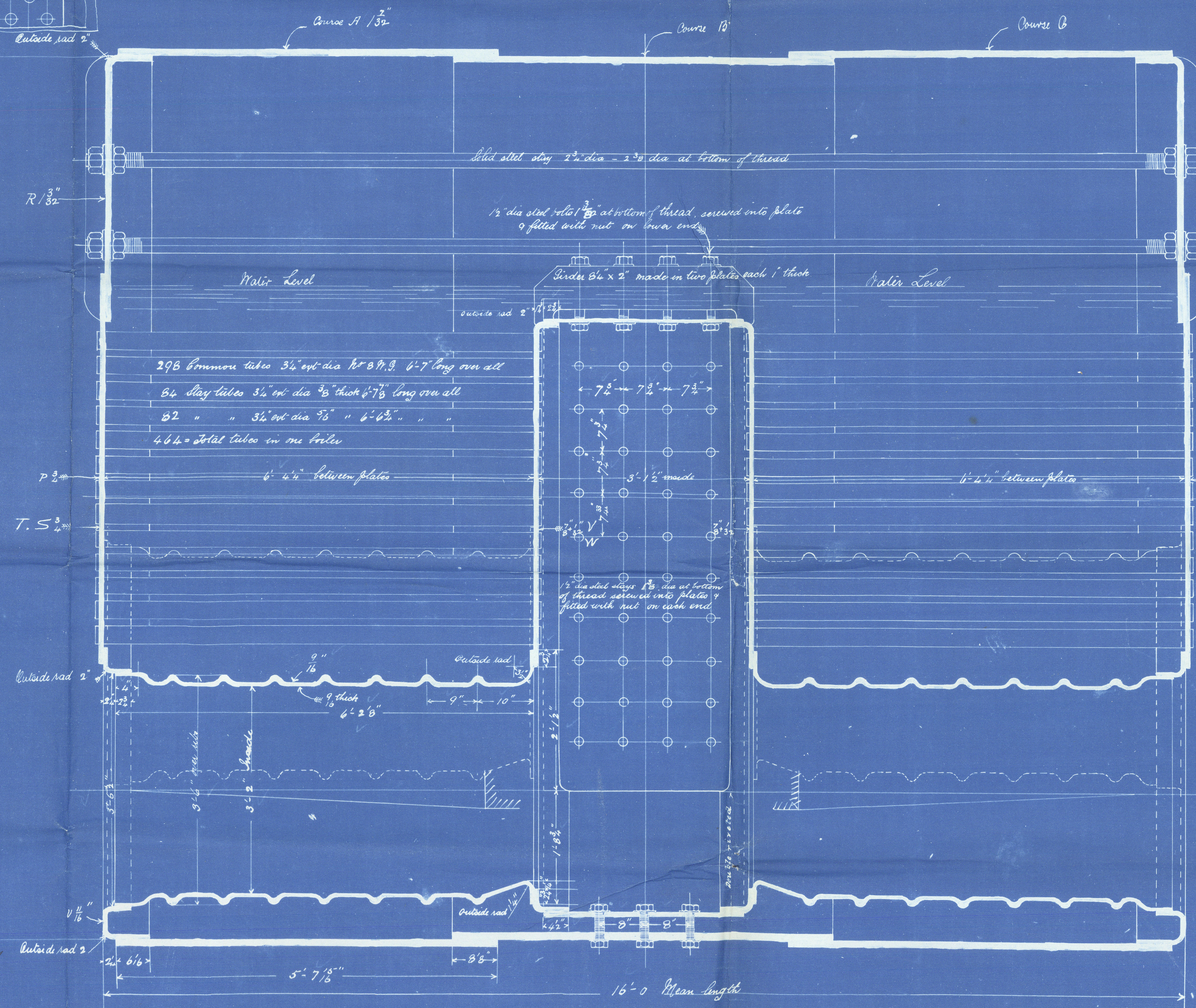
S.S. "~~Osphej~~" "*Himnodella*"
Scale 1" = 1 foot

Plates	Boat Rule	7bs	Lloyds Rules	7bs	Unit	Surfaces	Sq. ft.
Shell	$\frac{6470 \times 883}{100} \times 30 \times 3 = 153.5$	160	$\frac{260 \times 1318 \times 83}{100} = 185$	166	1/32	464	2525.6
Ends top	$\frac{113.5 \times (75-12)}{100} = 16.6$	16.6	$\frac{116.0 \times (72-2)}{100} = 178.5$	173	1/32	3	112.0
Ends tube plate	$\frac{100 \times (157-12)}{90} = 225$	225	$\frac{100 \times (12)}{60 \times 5} = 178$	178	1/32	3	112.0
Ends bottom					1/6	6	183.0
Rock tube plates	$\frac{40 \times 3 \times 21 \times 24 \times 2222}{80 \times 32 \times 3 \times 5} = 100.5$	100	$\frac{100 \times 116 \times 5}{90} = 127.8$	128	1/32	1	29.7
Free top tops	$\frac{100 \times (27)}{80 \times 265} = 171$	171	$\frac{110 \times 90}{7 \times 5} = 162$	162	1/32	1	29.7
do sides	$\frac{100 \times (27)}{80 \times 265} = 171$	171	$\frac{110 \times 90}{7 \times 5} = 162$	162	1/32	1	29.7
do bottoms	$\frac{8000 \times 8 \times 57}{100 \times 95} = 158$	158	$\frac{8000 \times 8 \times 57}{100 \times 95} = 158$	158	1/32	1	29.7
Stirrers	$\frac{850 \times 8 \times 3}{57 \times 3 \times 7 \times 21 \times 24 \times 2222} = 102$	102	$\frac{100 \times 20 \times 8 \times 12 \times 9}{100 \times 20 \times 21 \times 7 \times 3 \times 5} = 187$	187	1/32	1	29.7
Beam stays	$\frac{2}{2} = 1$	1	$\frac{2}{2} = 1$	1	1/32	1	29.7
do do	$\frac{2}{2} = 1$	1	$\frac{2}{2} = 1$	1	1/32	1	29.7
Free top do	$\frac{2}{2} = 1$	1	$\frac{2}{2} = 1$	1	1/32	1	29.7
Water surface	1 Boiler	13.5	1/32	1	1/32	1	29.7
do do	2 Boilers	37.0	1/32	2	1/32	2	59.4
Grate surface	1 Boiler	129.7	1/32	1	1/32	1	29.7
do do	2 Boilers	399.4	1/32	2	1/32	2	59.4
Base		5'3"	Long				
Total area two tubes		39.5	1/32				
Area base plates		1.00					

Shell $\frac{3}{32}$ " thick (steel) River holes $1\frac{1}{2}$ " dia $8\frac{3}{4}$ " pitch
Outer butt straps $1\frac{1}{8}$ " thick Inner butt straps $\frac{1}{8}$ " thick
Cover plates $\frac{1}{2}$ " thick



Two days through water from mid to mid 2^d division over threshold



Steel Boilers.

N^o. 295

S. S. ~~Captain~~ "Hirondelle"
Gourlay Bros & Co.
S.S. No. 143.

No. 562

Lloyd's Test

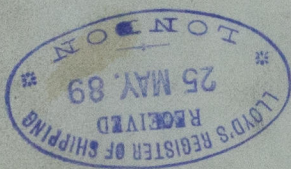
320 lbs.

A.E.K. 12.4.90.

Dundee.

Report. No. 5381.

S. S. "Hirondelle"



DUN114-0277

© 2020

Lloyd's Register
Foundation