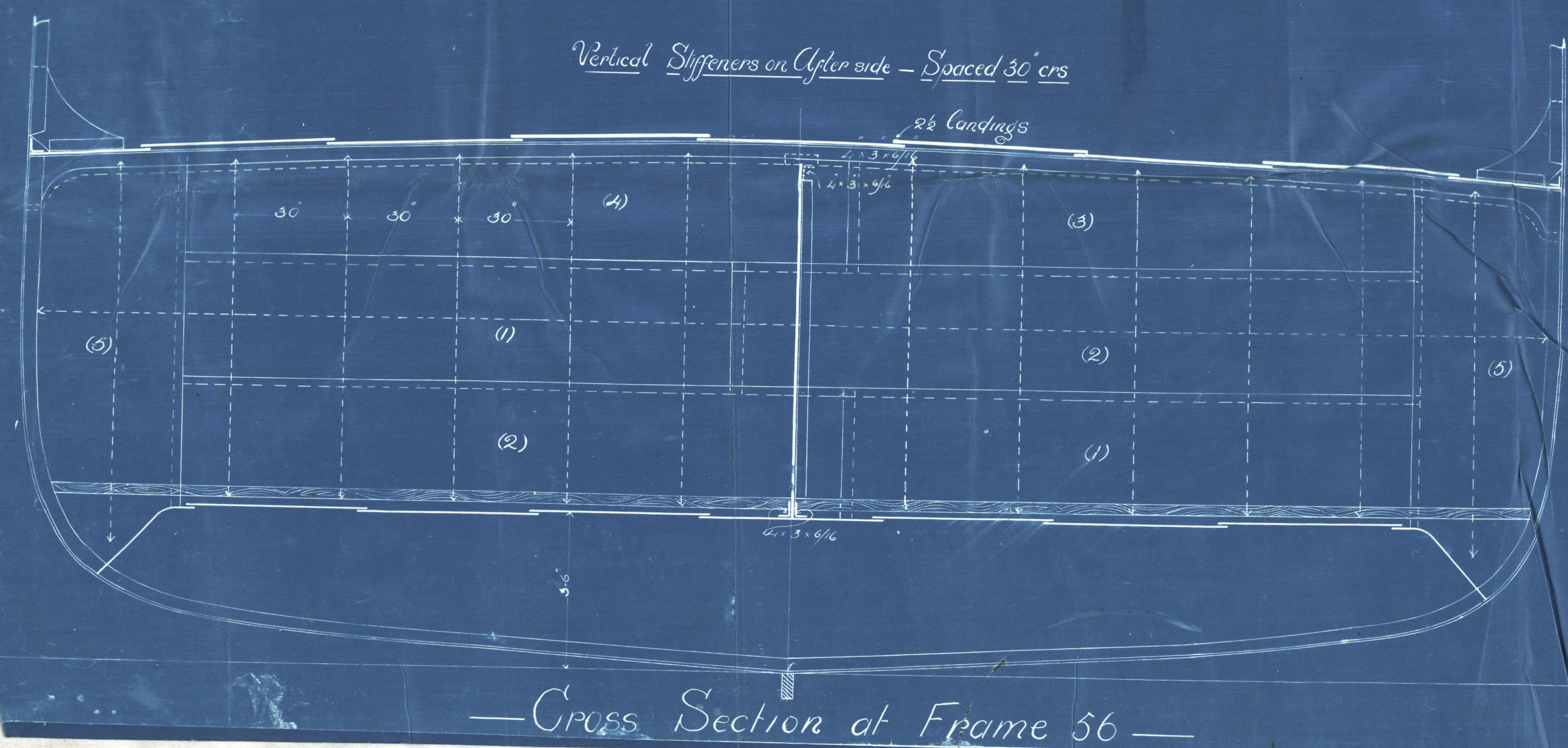
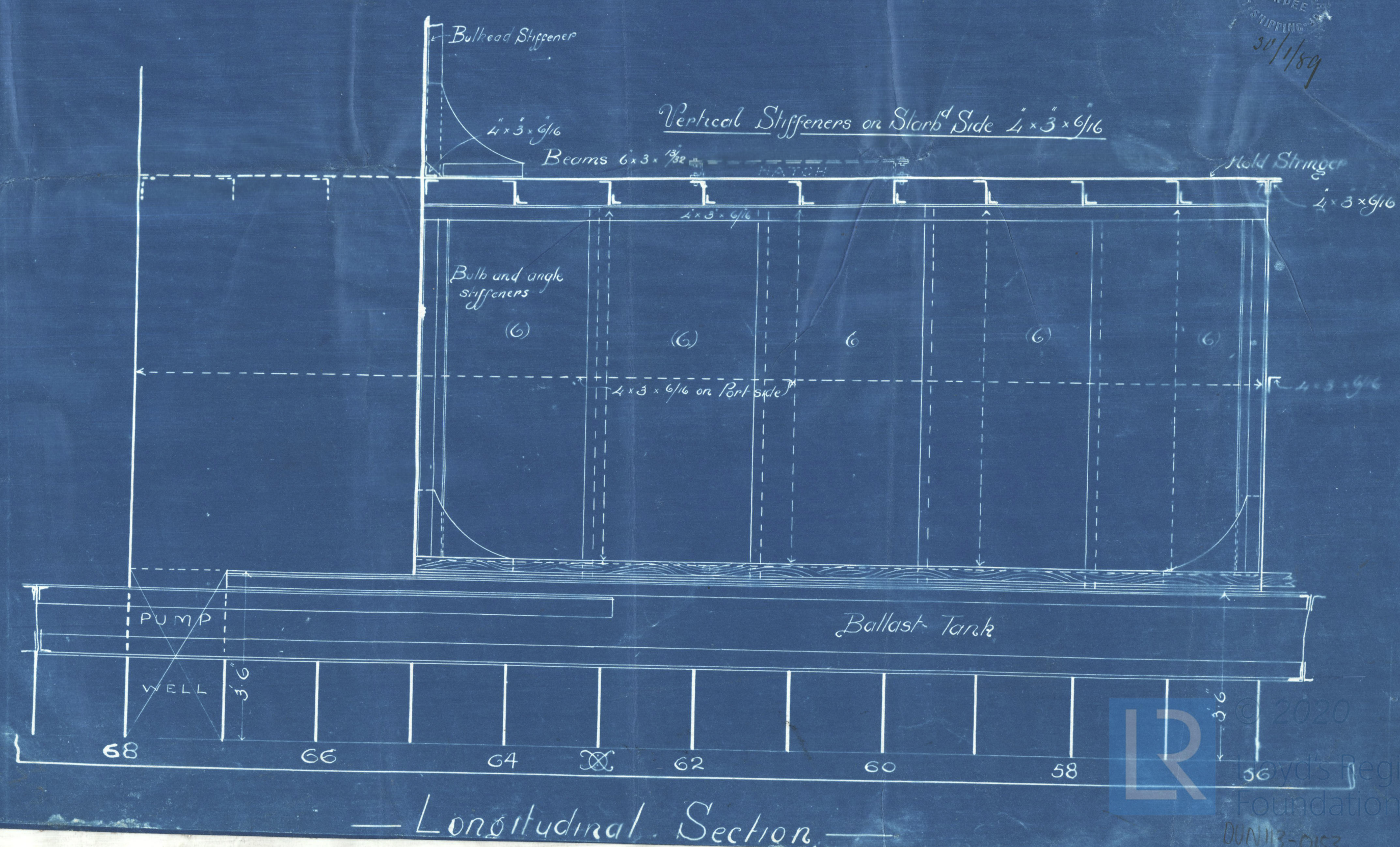
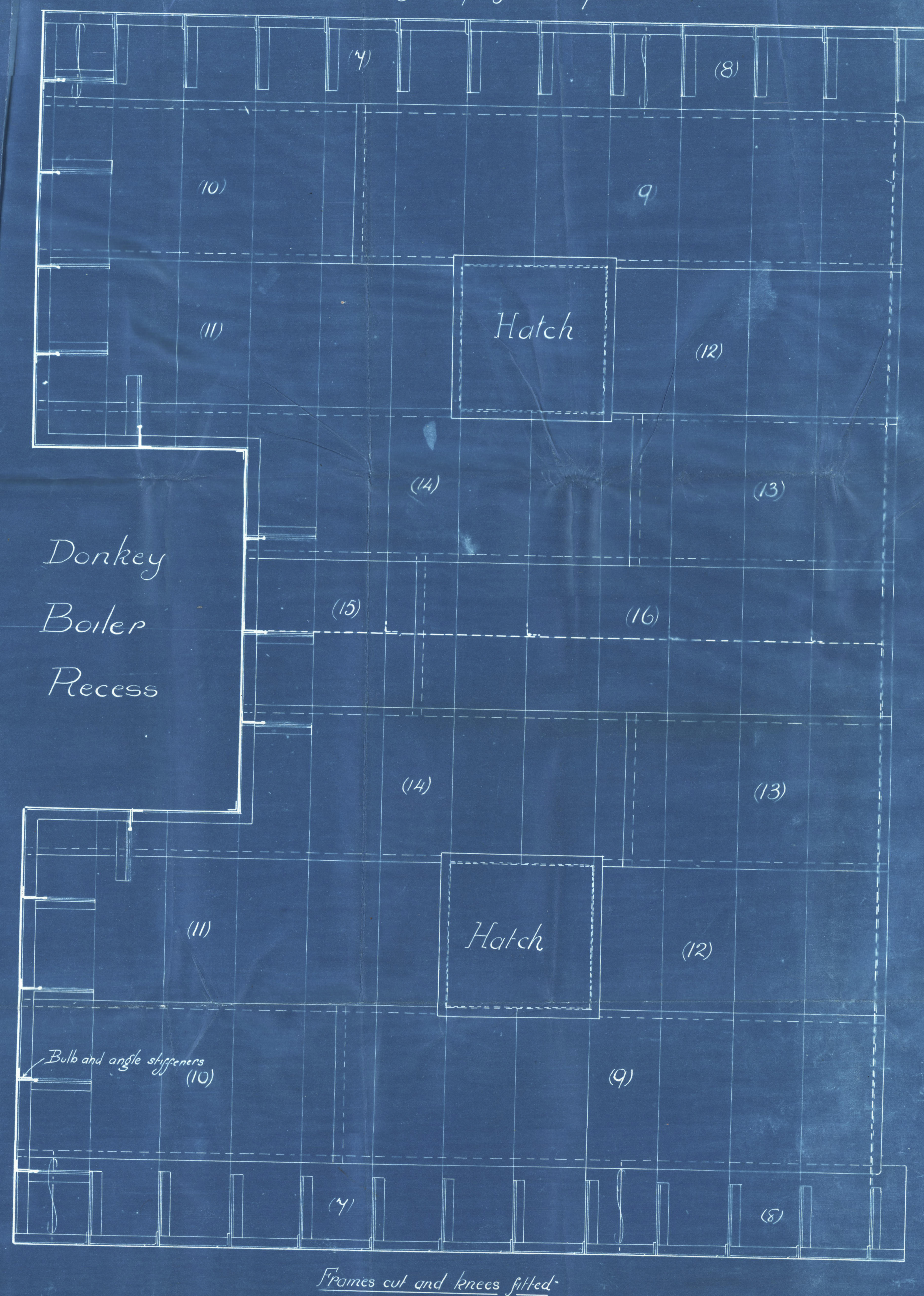




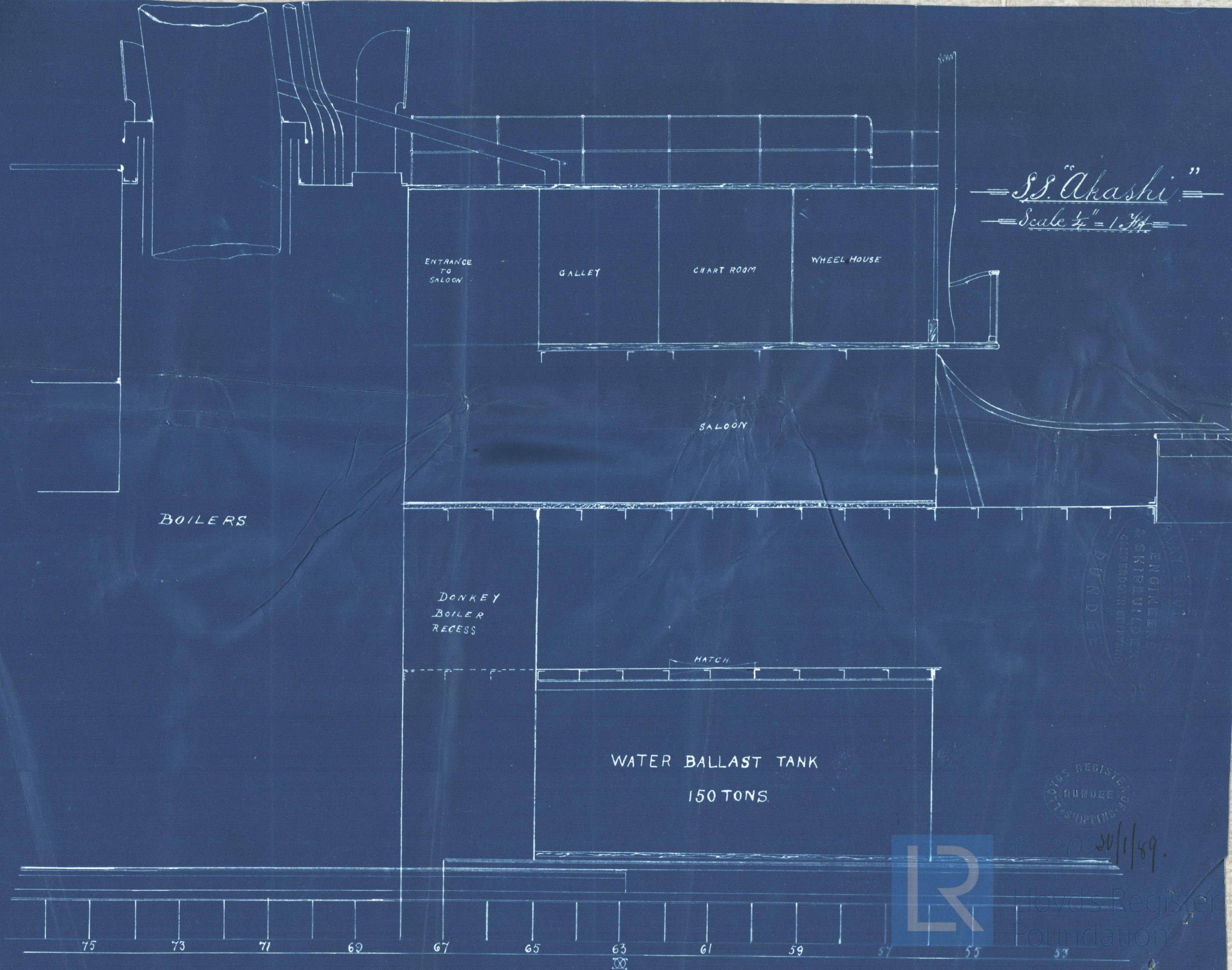
— Deep Tank —
— To be constructed in Main Hold —
— S.S. "AKASHI" N° 129 —
— Scale $\frac{1}{2}'' = 1 \text{ Foot}$ —
— 20TH DECEMBER 1888 —



— Plan of Top of Deep Tank —



DM 1130/S3 242



Plan of deep tanks
of

S. S. "Akashic" (ex
"Dean")

Gowlay Bros. & Co.

DUN 113-0153



© 2020

Lloyd's Register
Foundation