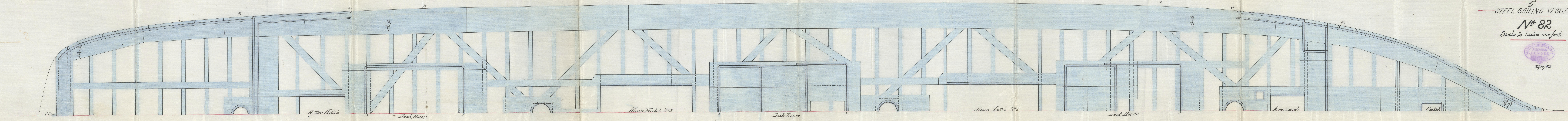


RECEIVED DEC. 22.

Lt. K. Dunn  
6/12/82



— MAIN DECK BEAM PLAN —  
— of —  
— STEEL SAILING VESSEL —

N<sup>o</sup> 82  
Scale 1/4 Inch = one foot.

S<sup>r</sup> Earl of Dalhousie  
Dundee report No 4434.

CLARK, STEPHEN & SONS  
DUNDEE  
20/10/82

J.M.  
6/12/82