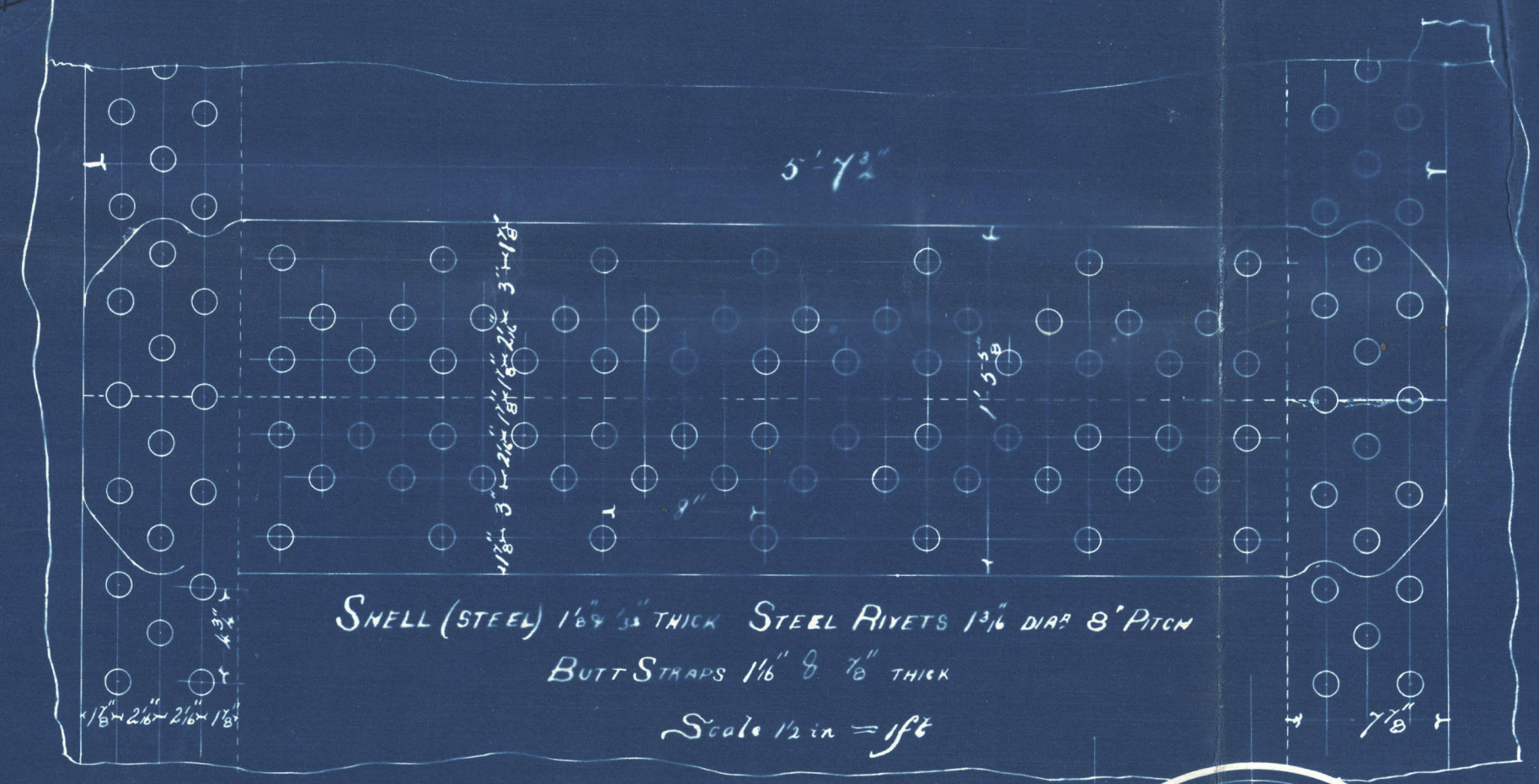
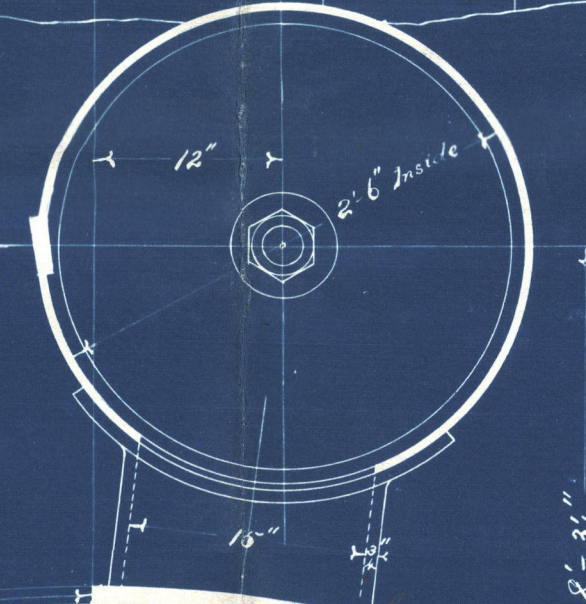
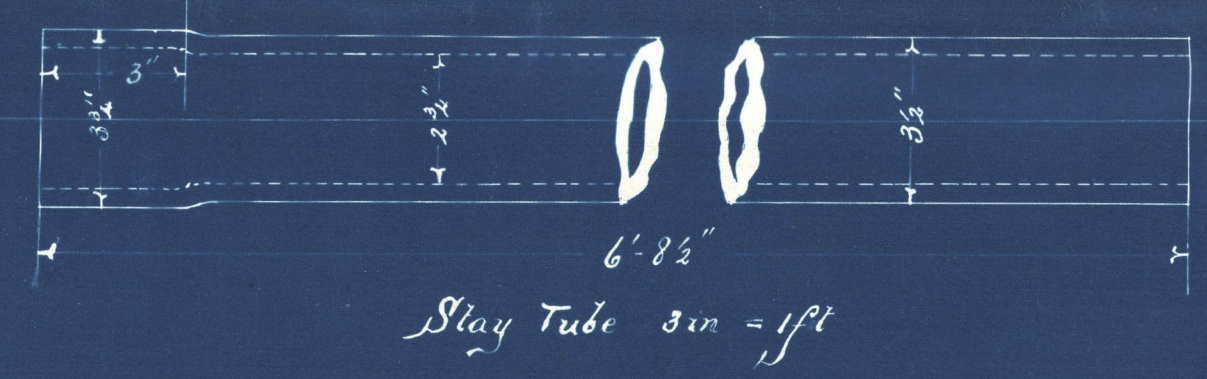


26/18/4/07



SNELL (STEEL) 1/4" THICK STEEL RIVETS 1 1/2" DIA 8" PITCH  
BUTT STRIPS 1/4" & 1/2" THICK

Scale 1/2" = 1' 0"



**BOARD OF TRADE RULES**

Shell	$\frac{62720 \times 3.5 \times 2.5}{153}$	= 141.46
Furnaces	$\frac{1200 \times 5.5 \times 2.5}{153}$	= 13.1
Front Shell Top	$\frac{1200 \times (4+1)^2}{252}$	= 139.8
Tube Plates	$\frac{100 \times (2.5)^2}{252} + 7.8$	= 16.8
Back "	$\frac{1200 \times 5.5 \times 2.5}{153}$	= 13.1
Centre Firebox Top	$\frac{8800 \times 3.641}{2715}$	= 119
Wing "	$\frac{100 \times (9.2)^2}{6006.6}$	= 13.4
Firebox Sides	$\frac{100 \times (12.5)^2}{14.5}$	= 106
Girders	$\frac{800 \times 8.5 \times 2.5 \times 2.5}{(4.9)^2 \times 7.7 \times 10^3 \times 13.42}$	= 161
Stays	$\frac{2372 \times 160}{9000}$	= 96.7
Steam Space Stays	$\frac{1256 \times 160}{9000}$	= 43.8

**LLOYD'S RULES**

Shell	$\frac{2600 \times 1.3435 \times 2.5}{153}$	= 146.16
Furnaces	$\frac{1000 \times 5.5}{153}$	= 14.8
Front Shell Top	$\frac{1200 \times 16.2}{14.5}$	= 160
Tube Plate	$\frac{1200 \times 12.5}{14.5} + 1.405$	= 163
Back Tube	$\frac{8800 \times 3.643}{2715}$	= 162
Centre Firebox Top	$\frac{1200 \times 9.2}{14.5}$	= 165
Wing "	$\frac{1200 \times 8.5}{14.5}$	= 159
Firebox Sides	$\frac{1000 \times 2.5 \times 2.5 \times 2.5}{(4.9)^2 \times 7.7 \times 10^3 \times 13.42}$	= 162
Girders	$\frac{800 \times 8.5 \times 2.5 \times 2.5}{(4.9)^2 \times 7.7 \times 10^3 \times 13.42}$	= 168
Stays	$\frac{2372 \times 160}{9000}$	= 108
Steam Space Stays	$\frac{1256 \times 160}{9000}$	= 45.8

# BOILERS SS WAVERLEY & N° 283

PRESSURE = 160 LBS SCALE. 1 IN. = 1 FT.

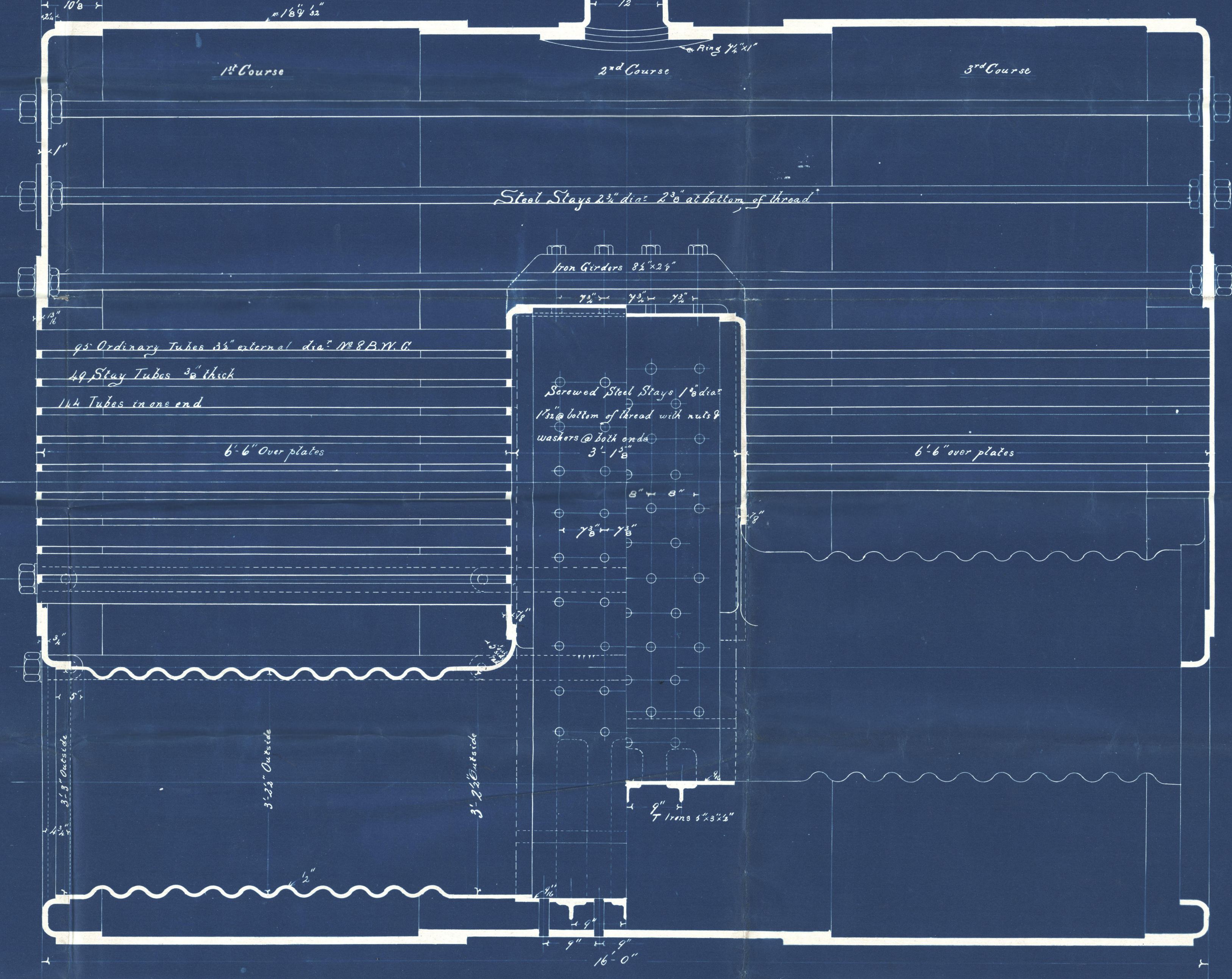
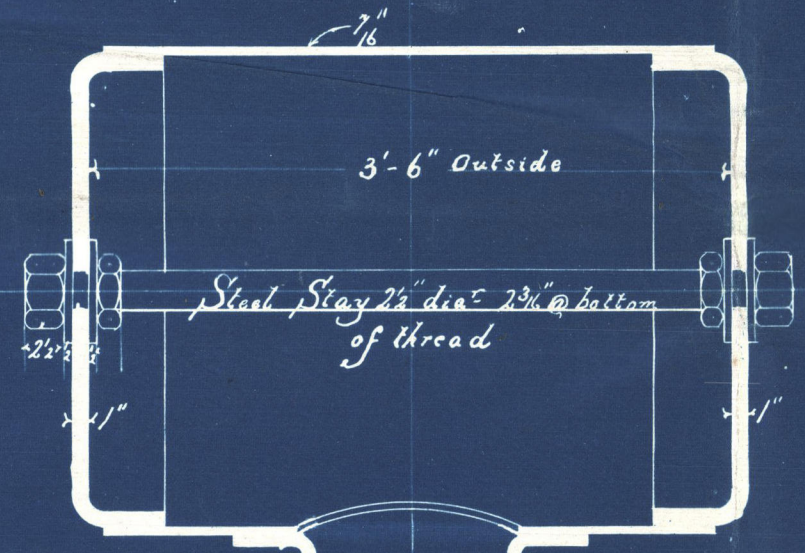
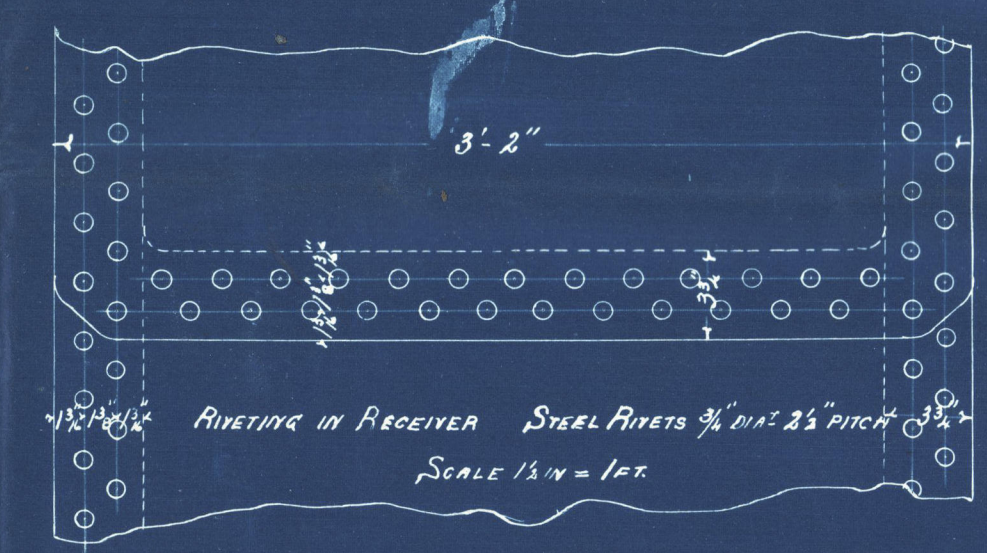
BOARD OF TRADE & LLOYD'S RULES

7/4/07

S. S. "Tremona" Report No. 5045.

**THICKNESS OF PLATES**

Shell	Steel 1/4" to 3/4"
Front Shell Top	1"
do. do. Bottom	3/4"
do. Tube Plates	3/8"
Back do. do.	3/4"
Firebox Sides	3/4" to 5/8"
do. Tops	3/8"
do. Bottoms	3/4"
Receiver Shell	3/4"
do. Ends	1"
Connections	3/4"
Furnaces	1/2"





Main Boiler  
with altered furnace.  
Gourlay Bros & Co

S.S. ~~Sunderland~~

160 lbs

No 283 for S.S. No 132

M = 509  
Lloyd's  
320 H.  
A.E.K. 12. 11. 87

"Haverley"

Dundee 5075  
Fremont

DUN 107-0253



© 2020

Lloyd's Register  
Foundation