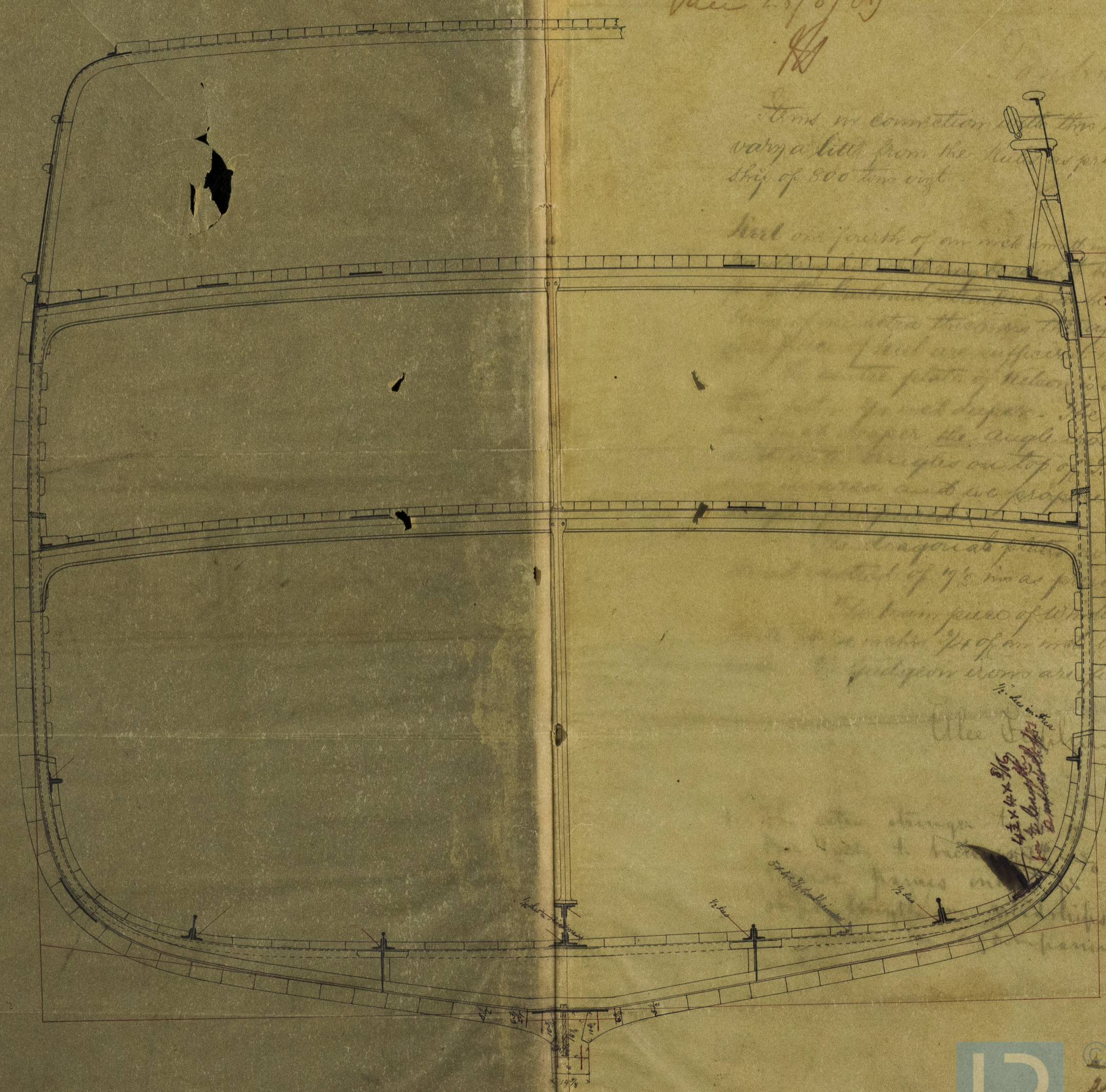


COMPOSITE SHIP.

No. 3594 Survey held at *Dundee* Date *21st August*
Midship Section of *Ship "Montrose"* Master *J. J. ...*
 Tonnage under tonnage deck *783 86* Built at *Dundee* When built *1867*
 Ship No. *13* Ditta of poop *251* Deck *13-25*
 Scale $\frac{3}{8}$ in = 1 Foot Length of engine room *79 3/4* 23 28
 Gross tonnage *902.0* Port belonging to *London* Destined Voyage
Montrose
25/8/67



Under no connection with this ship which may vary a little from the rules prescribed for a ship of 800 tons weight.

And one fourth of an inch in thickness of the sides and bottom plates of the hull are sufficient in size. The plates of the hull are one sixteenth of an inch thick. The floor plates are one eighth of an inch thick. The angle iron on the sides of the hull are 1 1/2 inches high on top of the floor are 1 1/2 inches high and are properly spaced in order to support the floor plates. The diagonal plates are one inch thick and are spaced at intervals of 17 1/2 inches as per rule. The main piece of the hull is of iron and is 1/2 inch thick. The other pieces are of iron and are 1/2 inch thick. The diagonal iron are full size of the hull.

W. J. ...
14 1/2 x 14 1/2
for the keel
for the bottom

double angle riveted to half the thickness of the plates & placed transverse midship