

34377

Tarrington

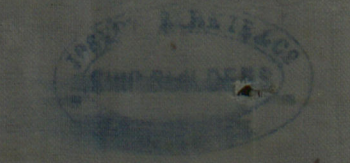
No 13

Composite

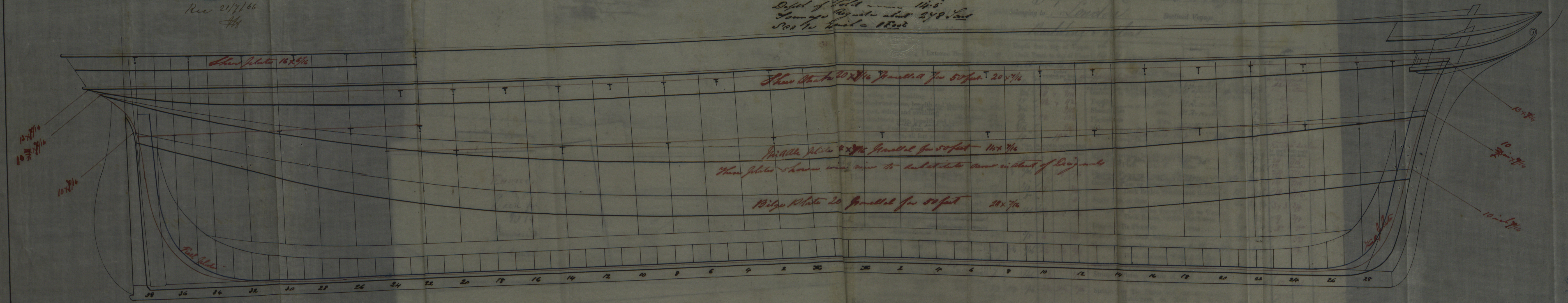
Length between Perches 116'0"
Beam at Stem 24'8"
Depth of Hold 14'5"
Tonnage Register about 248 Tons
Sea to Wind - 18 knots

COMPOSITE SHIP

When built Joseph Brown & Co. Ltd. Glasgow
When launched 1887
When completed 1887
Belonging to London
Destined Voyage



Rev 21/7/86
Hh



DUN106-0139

" Bilge (N^o one) at each Bilge. }
with single or double plate or box Bult. } 7' x 7/16 for 60 ft 6' x 3/8 - 1/2 (Can the Rudder be unshipped afloat Yes)
The Floors consist of 3' x 3/8 3' x 3/8 3' x 3/8
The Main Keelson is 12' x 1/2 Gravelled for 50 feet and free from all defects.
The Stem, and Stern Post of 12' x 1/2 Gravelled for 50 feet and free from all defects.
The Main piece of Rudder is Teak of Windlass is Iron Bark

