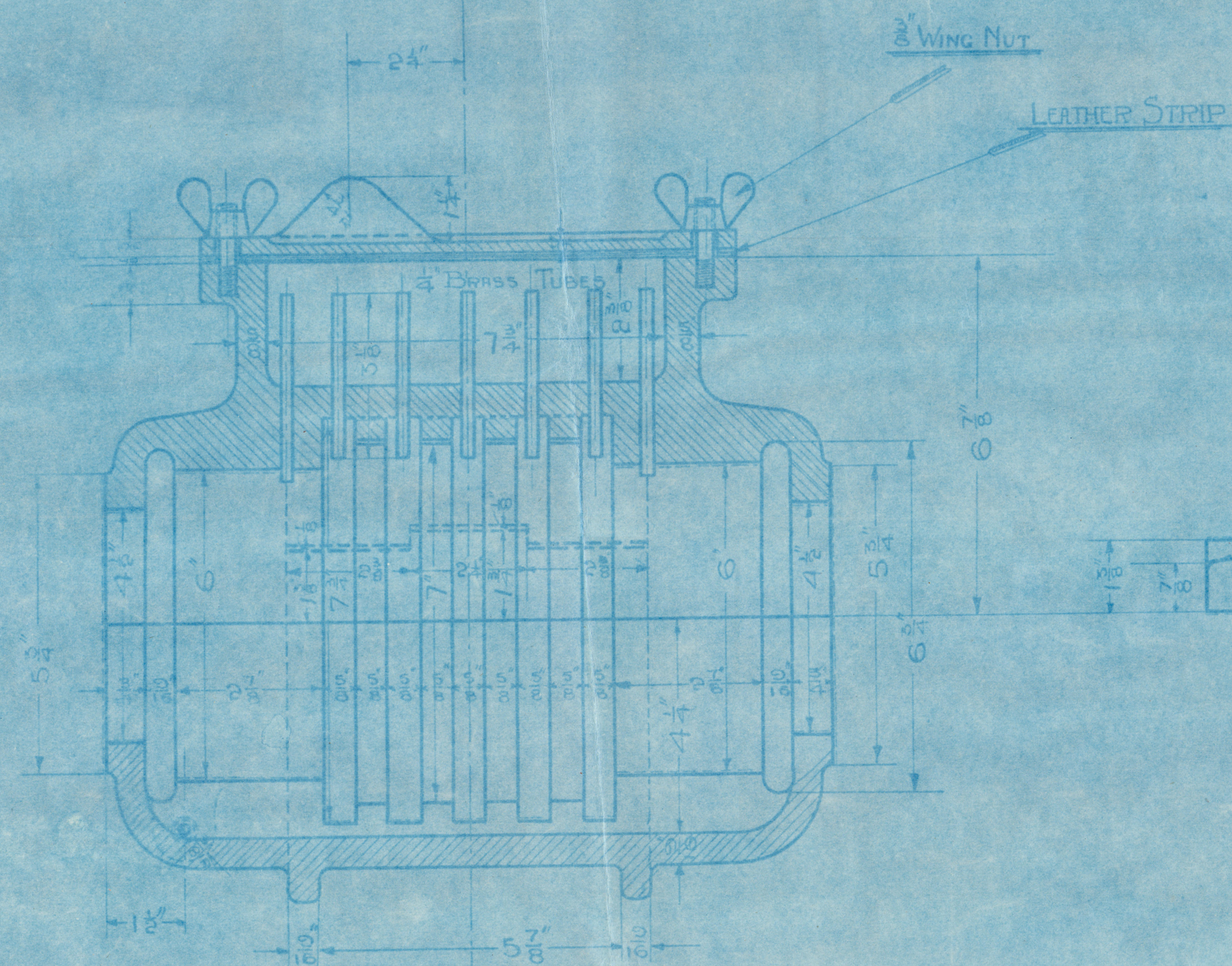
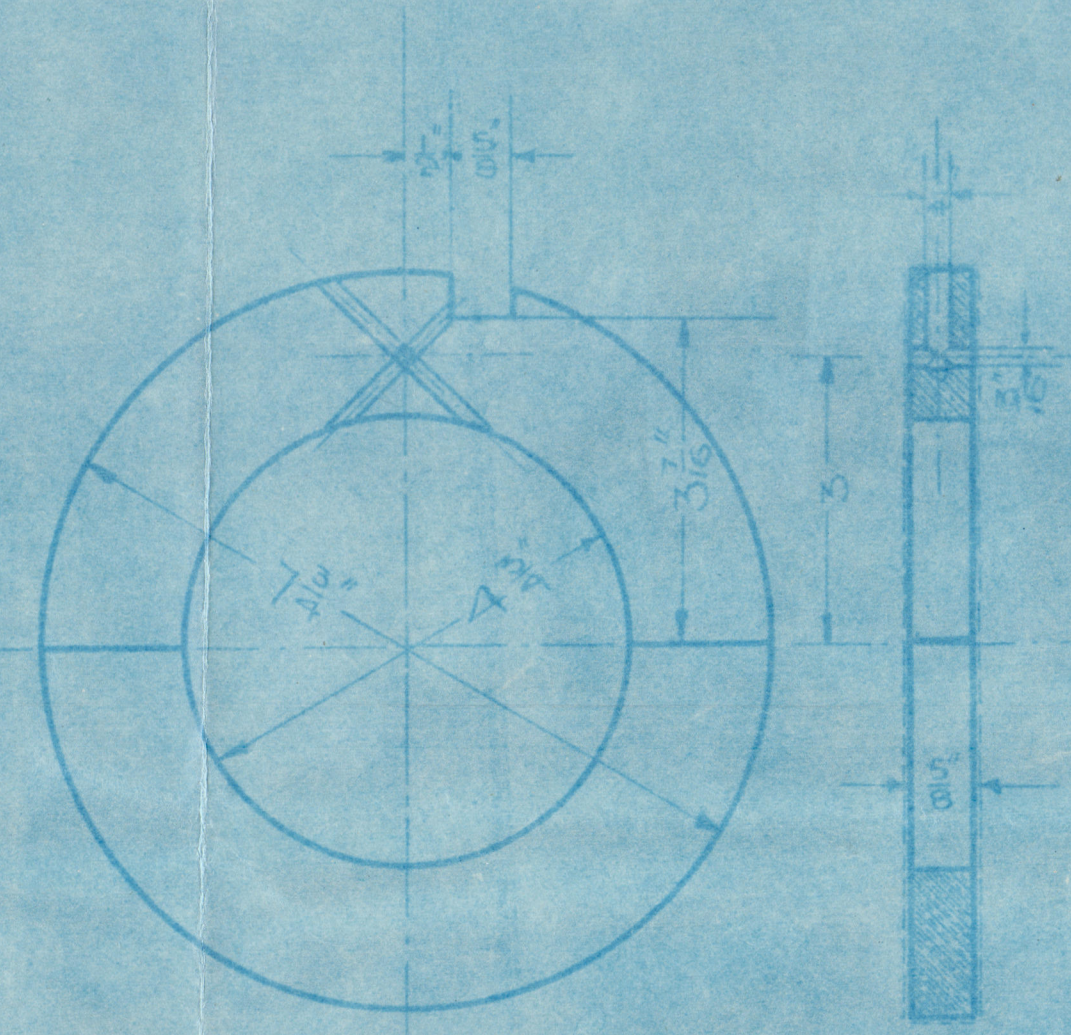
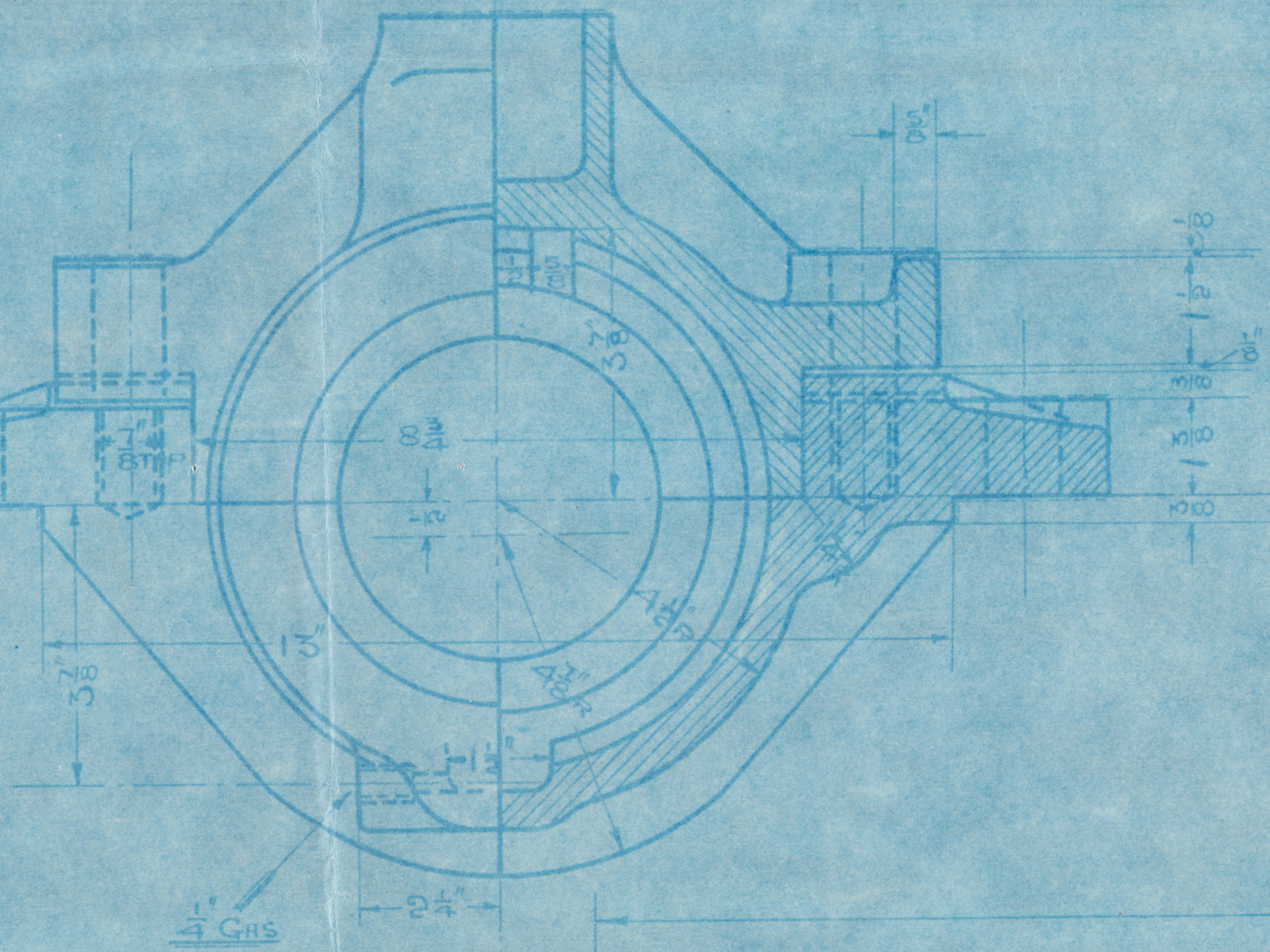


20/7/14

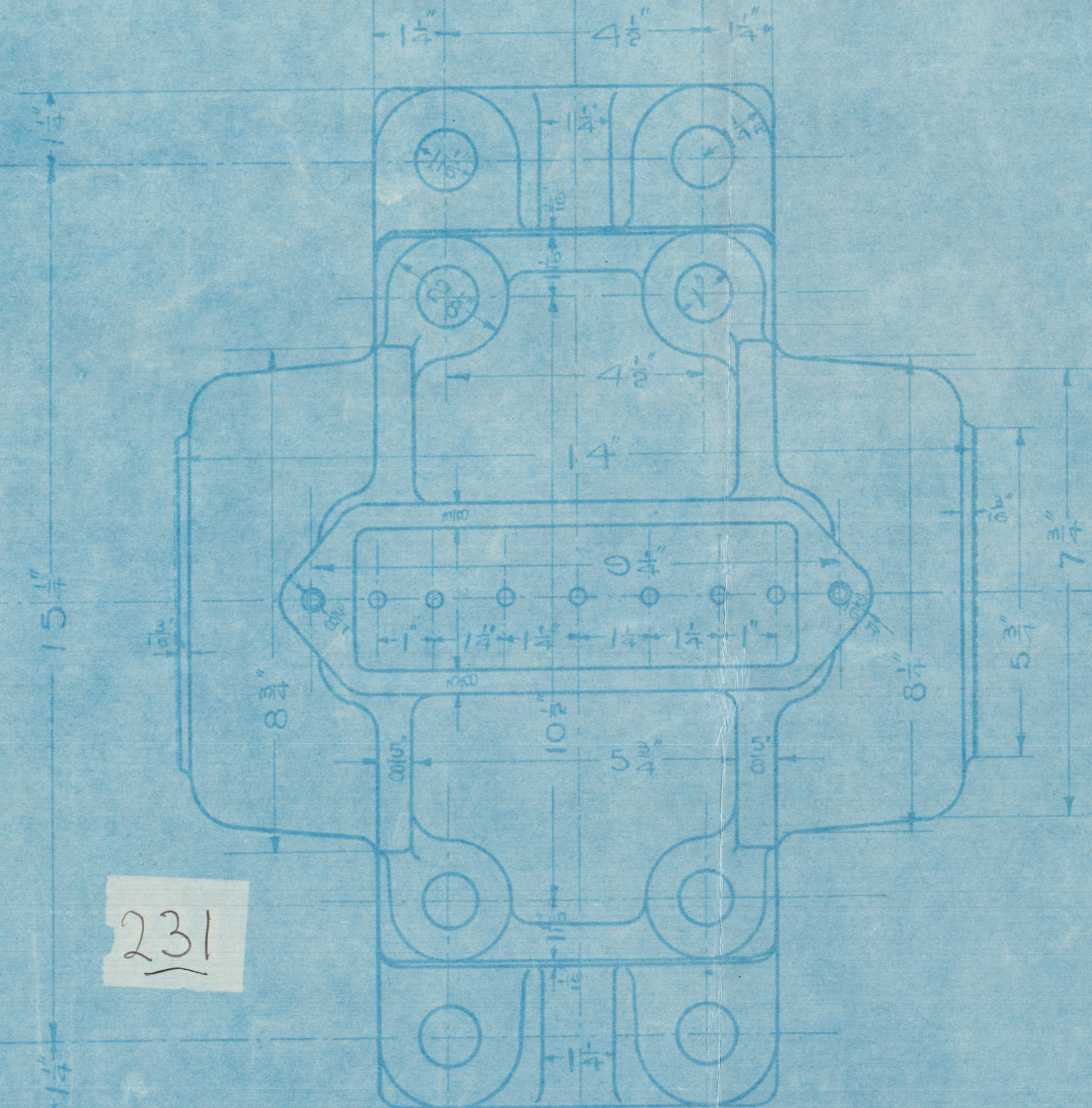


1 OFF - C.I. - NEW PATT.^N



3 OFF - BRASS

6-1 BOLTS - 7 DIA CENTRES



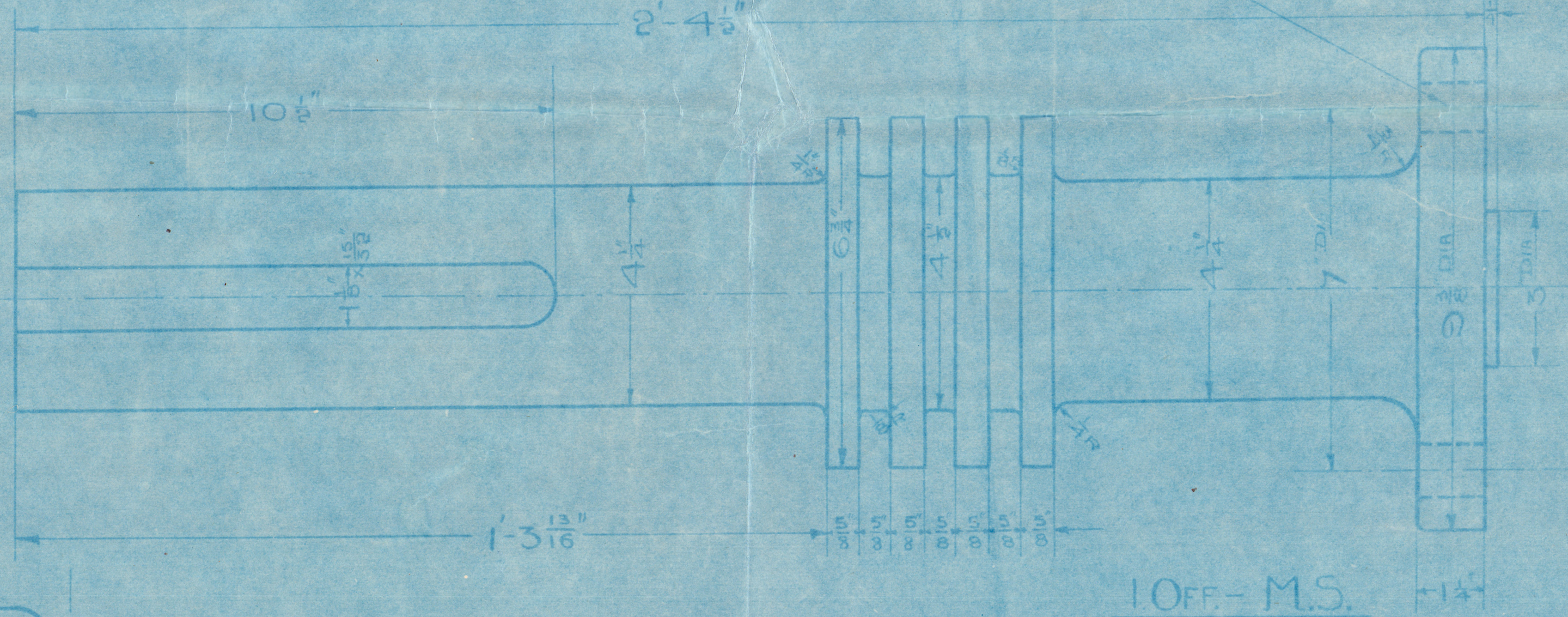
231

SCALE - HALF SIZE

THRUST BEARING FOR 88 B.H.P. 2 CYLINDER MARINE OIL ENGINE.

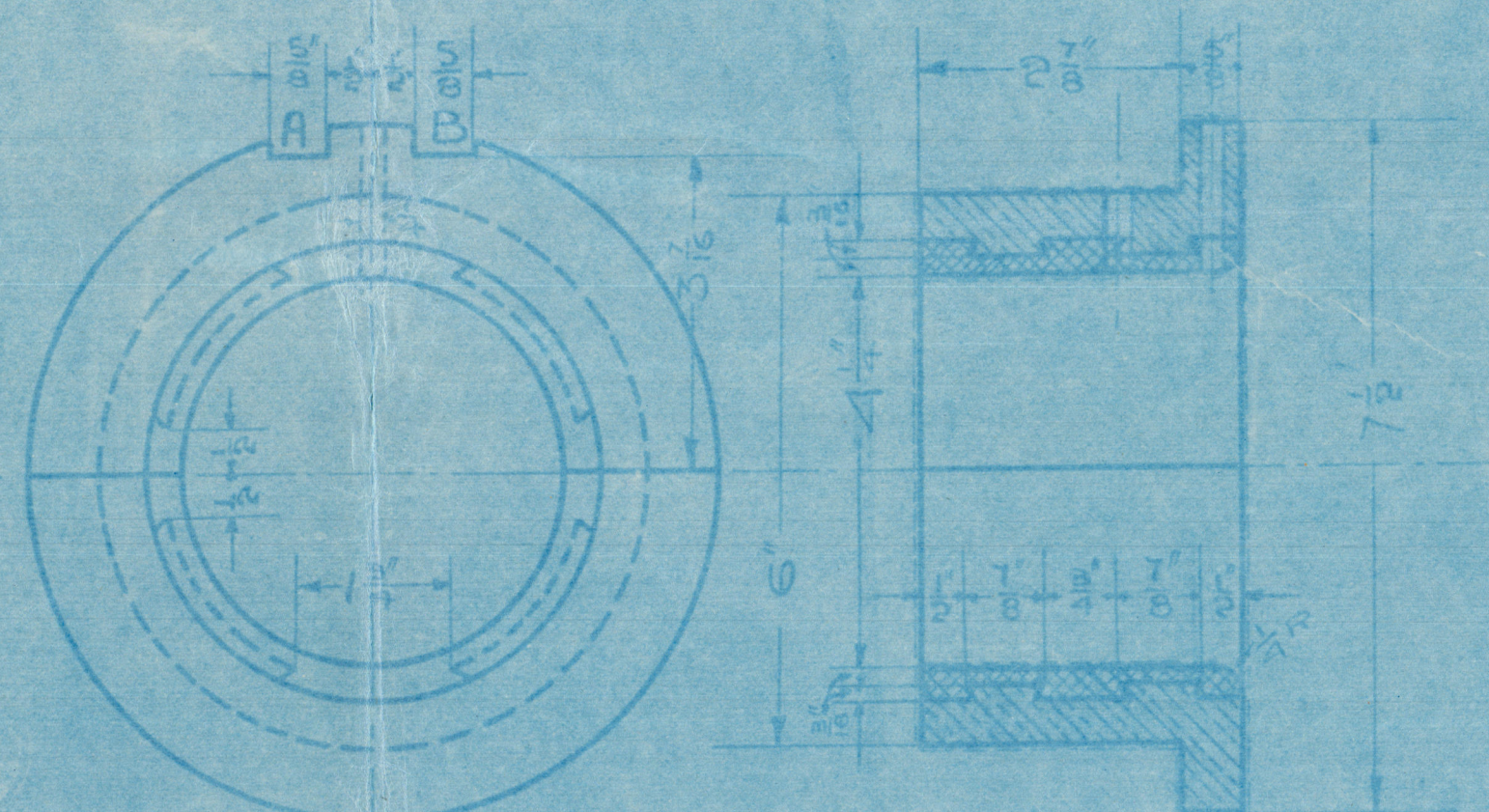
(13" x 13 1/8")

DATE - 17-12-13
CHECKED BY -
APPROVED BY -



C.I. COVER 1-OFF
PRES. PATT.^N

APR 22.7.14



1-OFF WITH RECESS AT A.
1-OFF " " B. } BRASS - WHITE METAL LINED