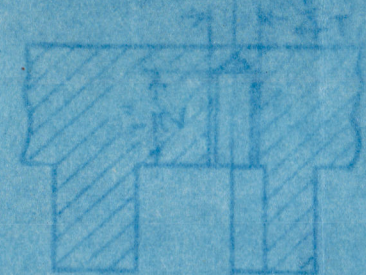
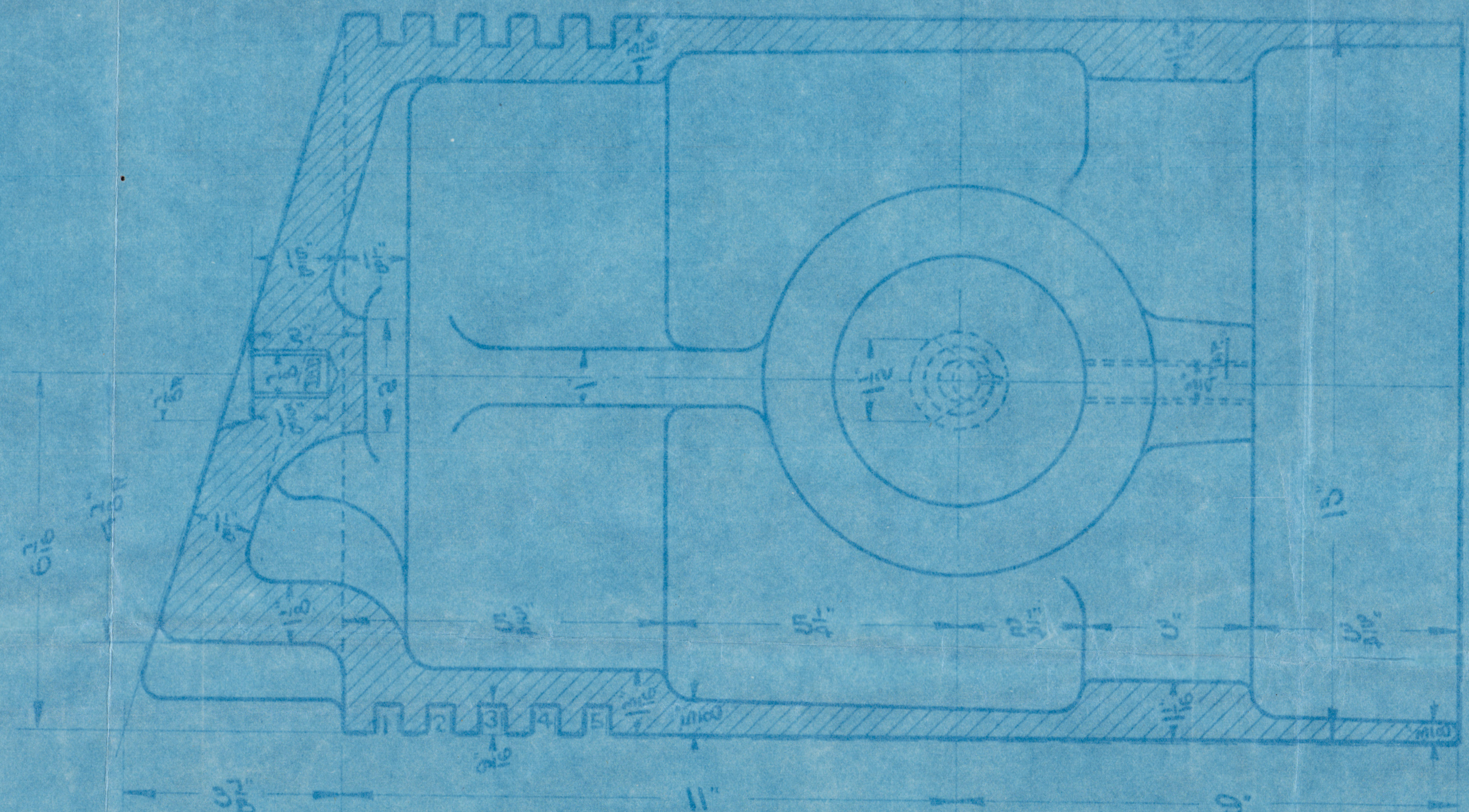
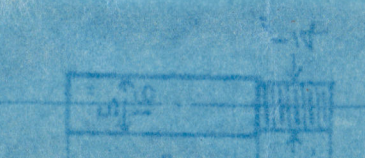


7/3/14



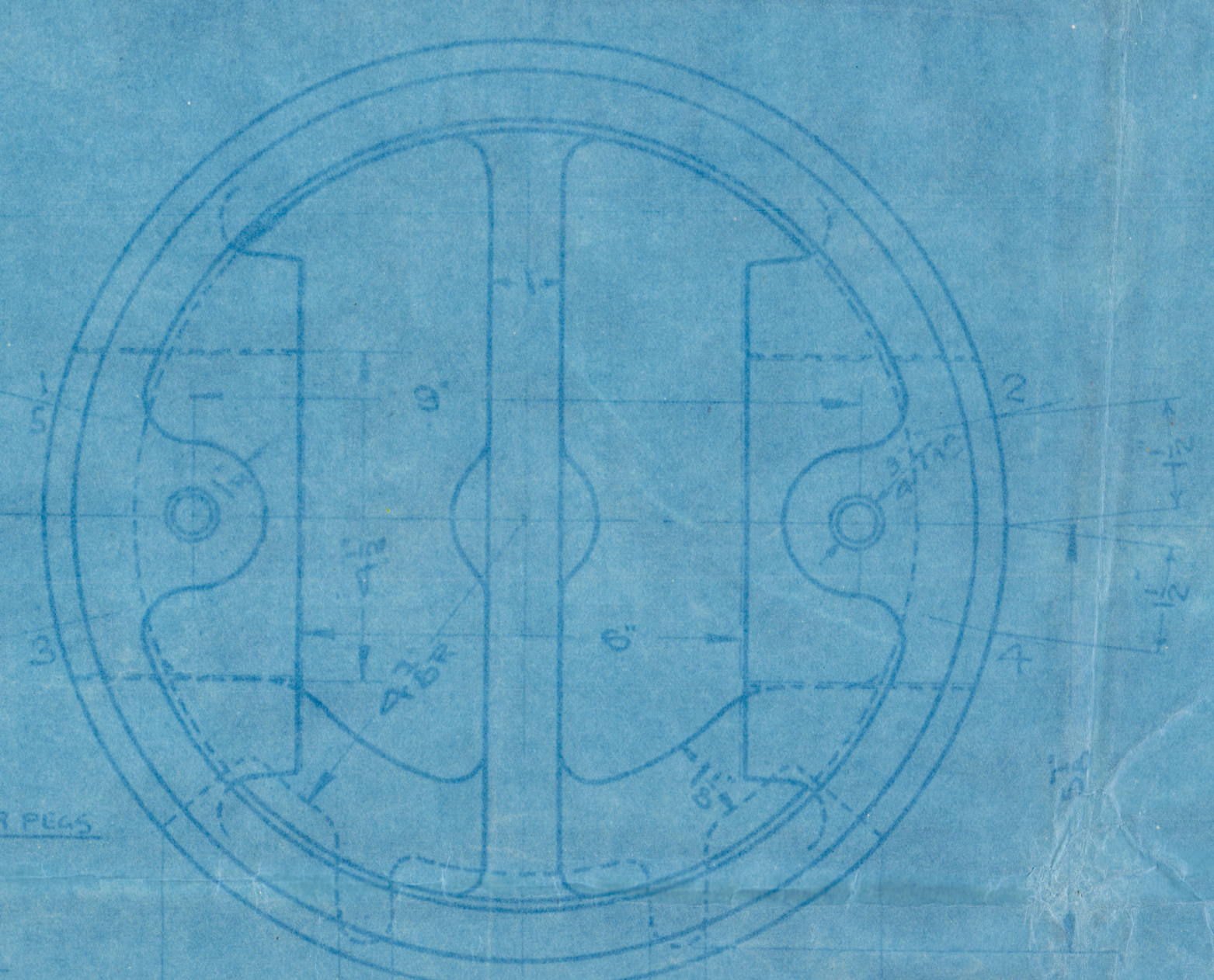
DETAIL OF HOLES FOR PINS



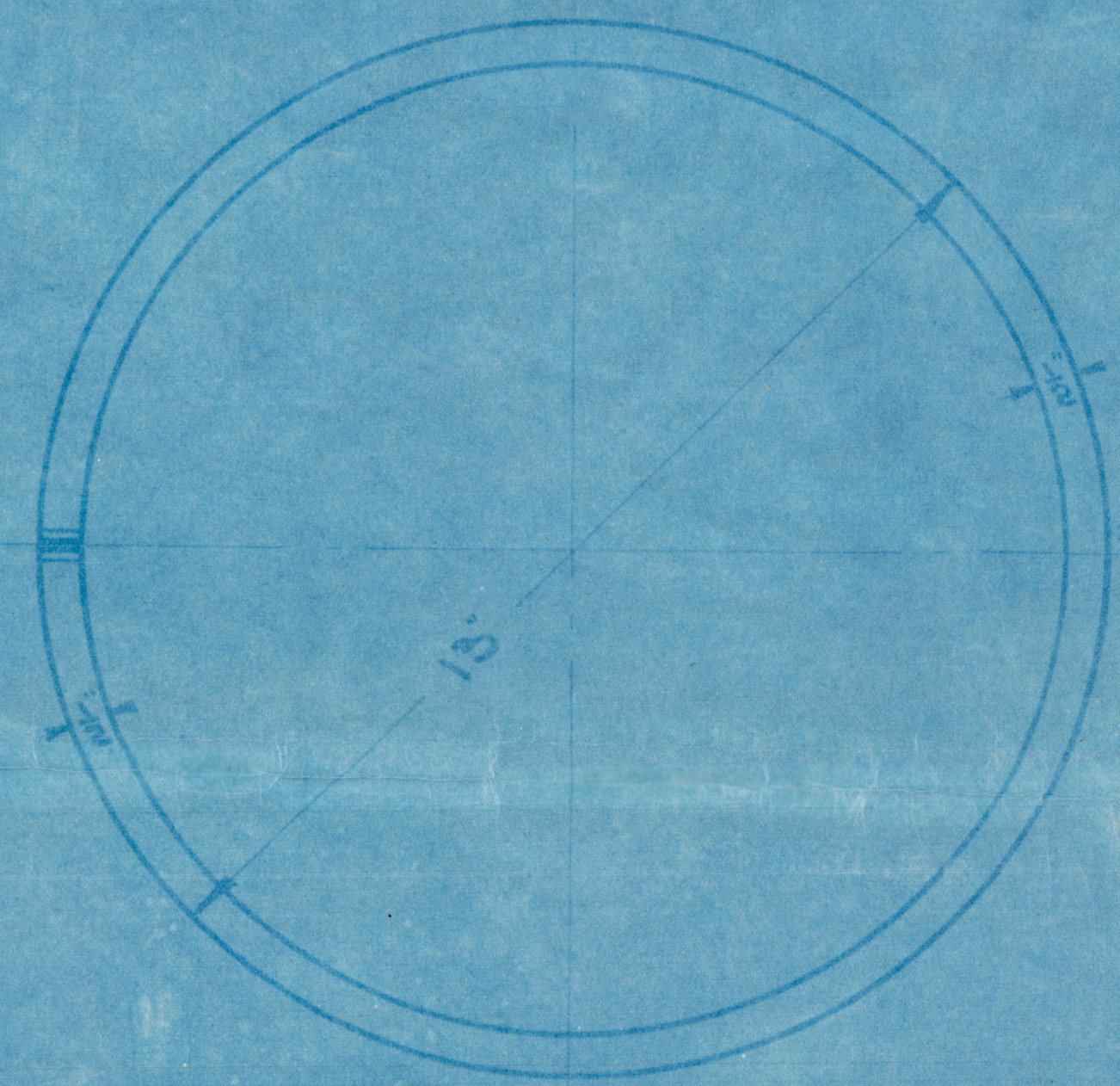
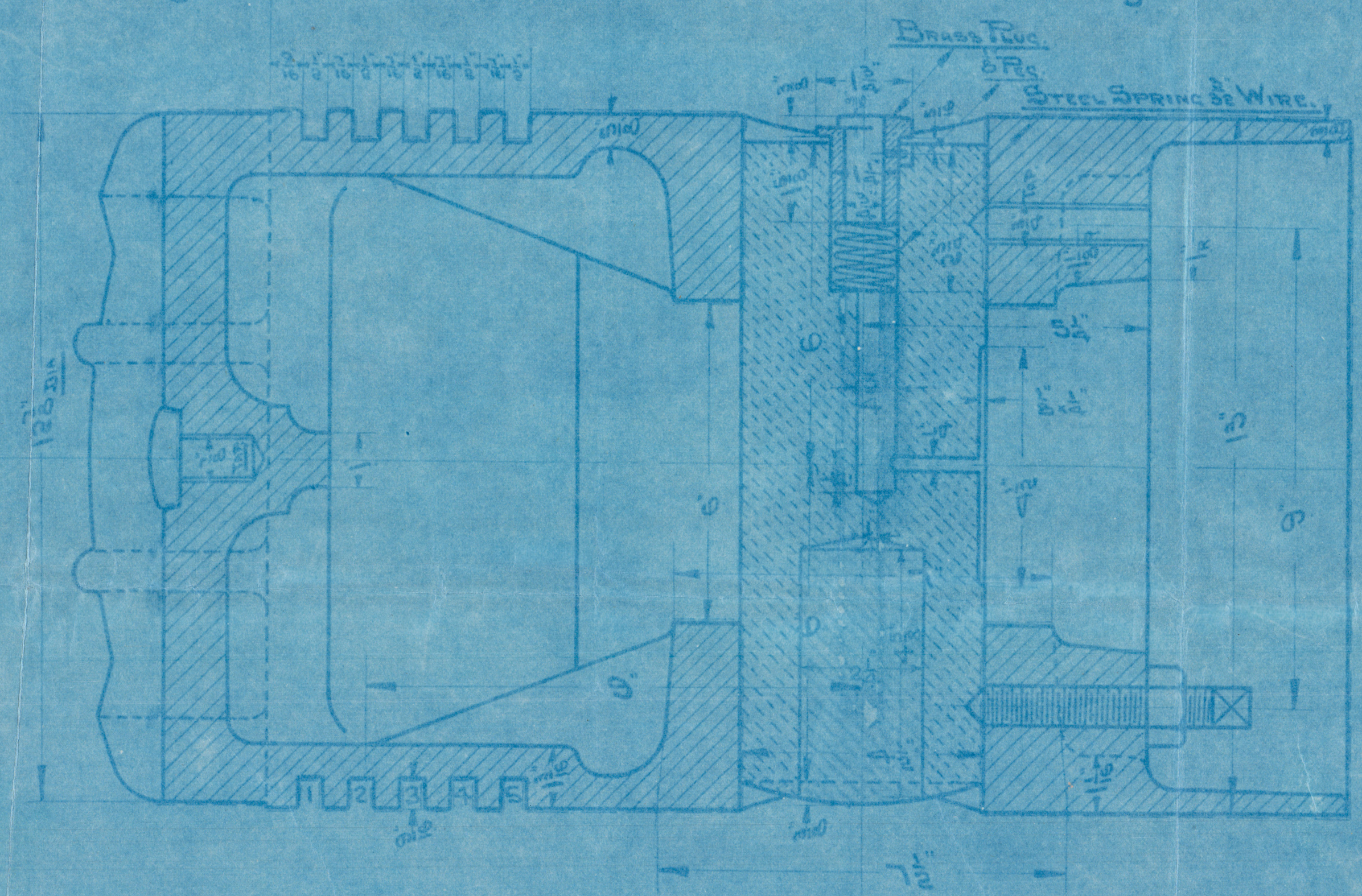
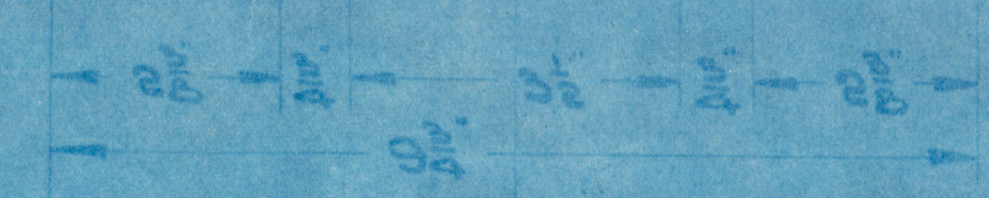
5-Off P.S. (7-3-14)

1-Off C.I.

NEW PATT.



PEGS TO BE IN ABOVE ORDER



5-Off HAMMERED CAST IRON.

228

PISTON FOR 88 B.H.P. VERT. TWO CYCLE OIL ENGINE. (13 1/2 DIA X 13 1/2).

SCALE - HALF SIZE.

DATE:	7-3-14
CHECKED:	AWN
APPROVED:	AWN

9.7.14
22.7.14

D.S. No. 55



Lloyd's Register Foundation
DUREA-0293