

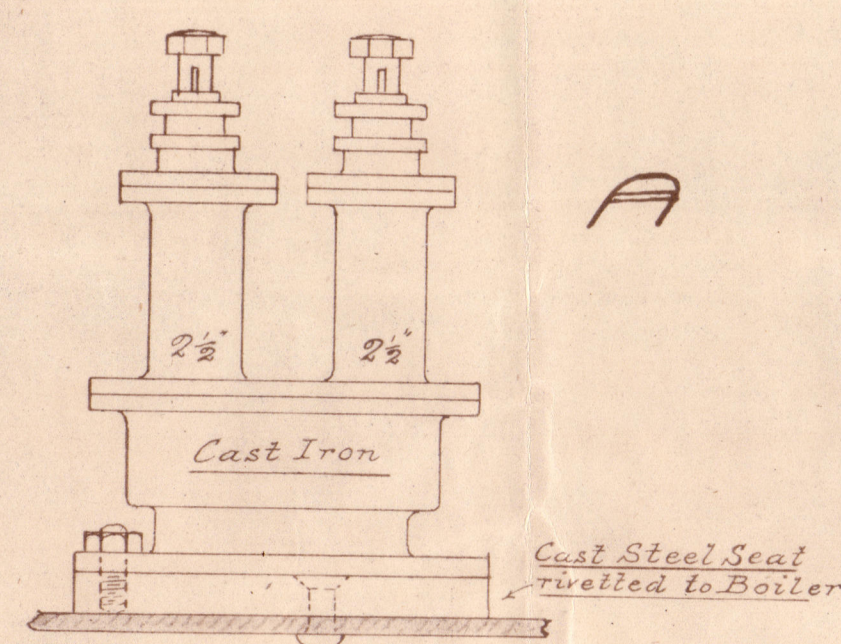
MESSRS A. GUINNESS SON & CO LTD

SPARE BOILER FOR BOATS

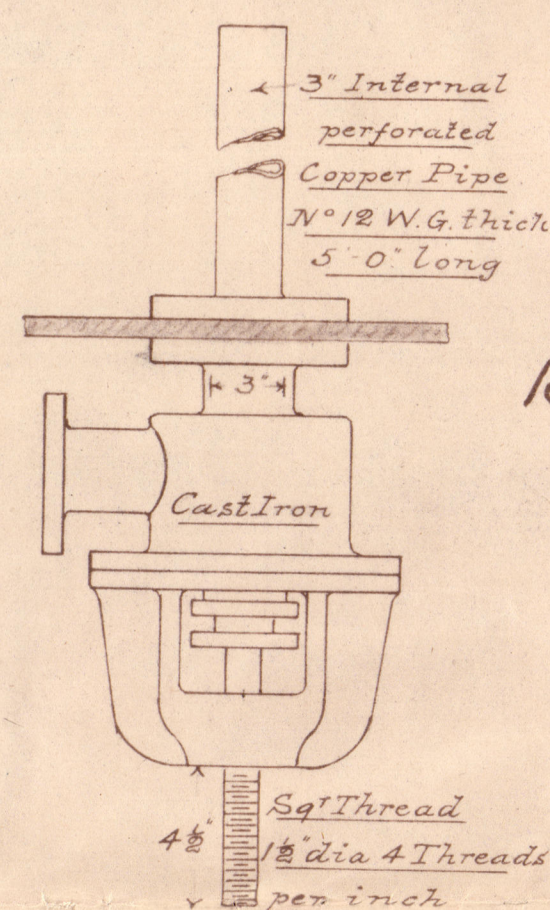
MOUNTINGS

NOT TO SCALE

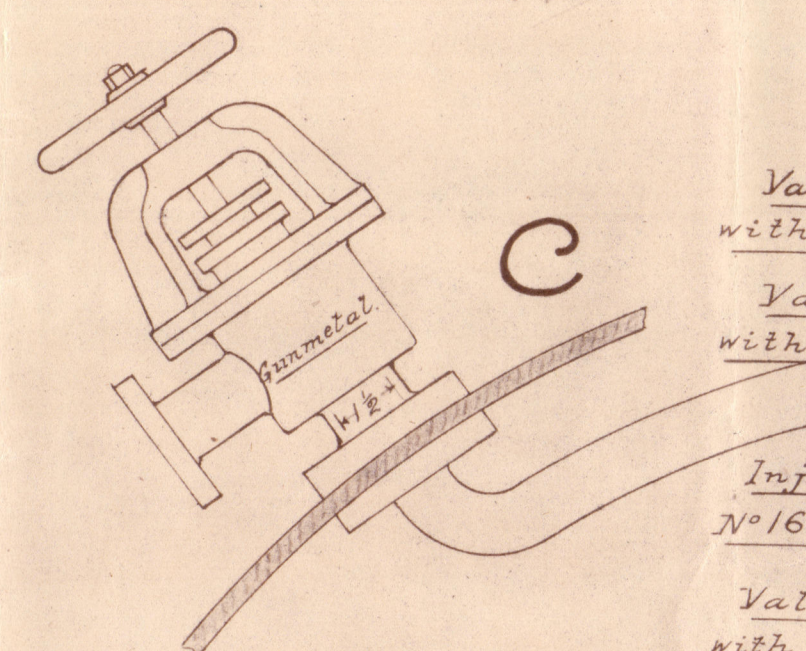
D. N. 172 A & C - K



2 1/2" DOUBLE SAFETY VALVE



3" MAIN STEAM VALVE



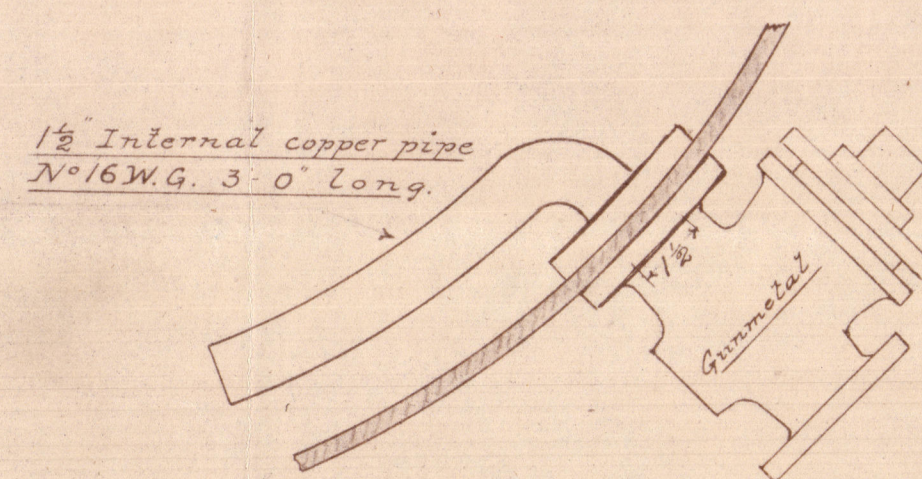
Valve to Tank Ejector & Port Injector - To be 1/2" dia. with 1" internal perforated copper pipe No 16 W.G. 3' 0" long

Valve to Starboard Injector - To be 1" dia. with 1" internal perforated copper pipe No 16 W.G. 3' 0" long

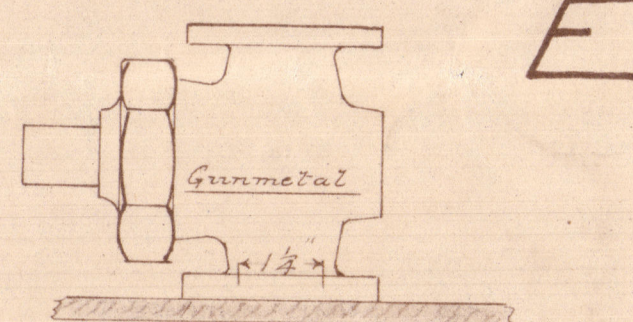
Injector Check Valves - To be 1/2" dia. with 1/2" internal copper pipe No 16 W.G. 1' 6" long Valve to be loose on or clear of spindle

Valve to Crane Engine - To be 1/2" dia. with 1/2" internal perforated copper pipe No 16 W.G. 3' 0" long

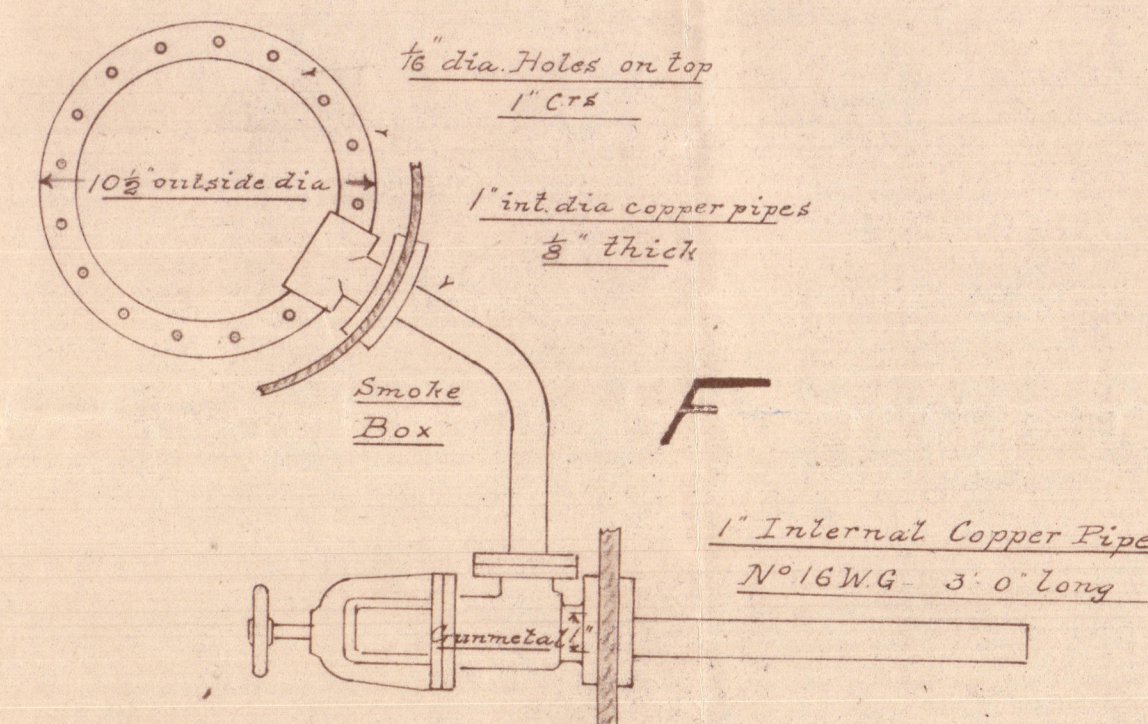
STEAM VALVE TO TANK EJECTOR & C



1 1/2" BLOW OFF COCK



1 1/4" STOP COCK FOR WHISTLE



1" STEAM VALVE FOR BLOWER

