

MESSRS. A. GUINNESS SON & CO. LTD.  
SPARE BOILER FOR BOATS.

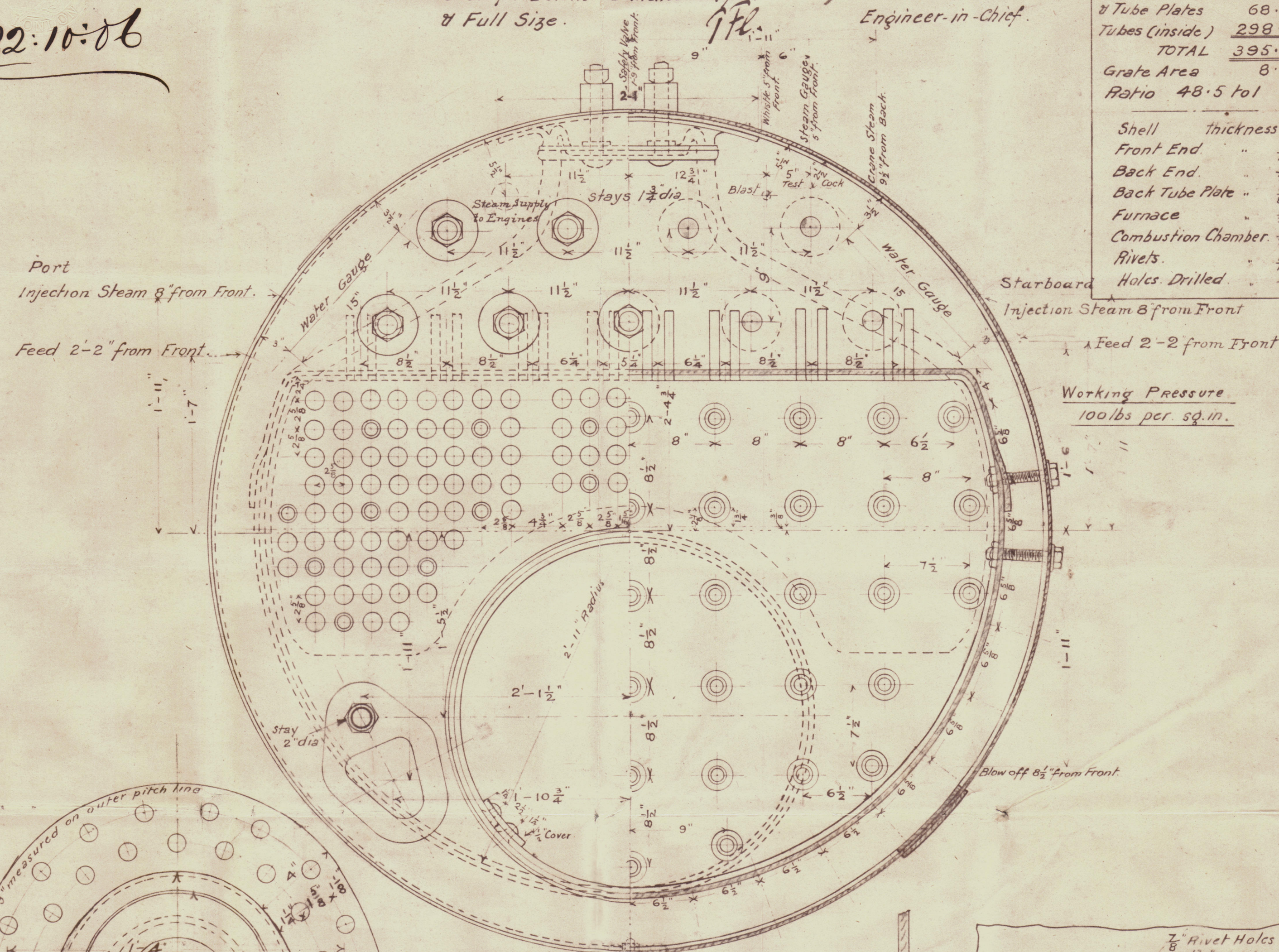
General Scale  $1\frac{1}{2}$  inches = 1 foot.  
Scale for Details 3 inches = 1 foot.  
& Full Size.

Engineer-in-Chief.

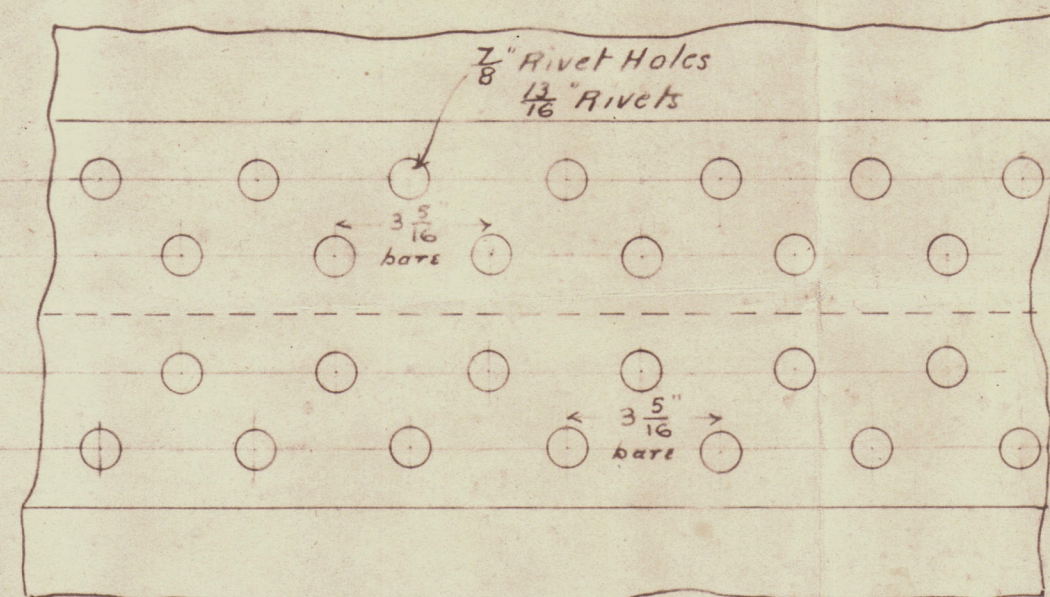
Heating Surface	
Flue	59.4
Combustion Chamber	27.6
& Tube Plates	68.8
Tubes (inside)	298.8
TOTAL	395.2
Grate Area	8.1
Ratio	48.5 to 1

Shell thickness	$\frac{1}{2}$ "
Front End	$\frac{3}{16}$ "
Back End	$\frac{3}{16}$ "
Back Tube Plate	$\frac{3}{16}$ "
Furnace	$\frac{3}{16}$ "
Combustion Chamber	$\frac{3}{16}$ "
Rivets	$\frac{1}{2}$ "
Holes Drilled	$\frac{1}{2}$ "

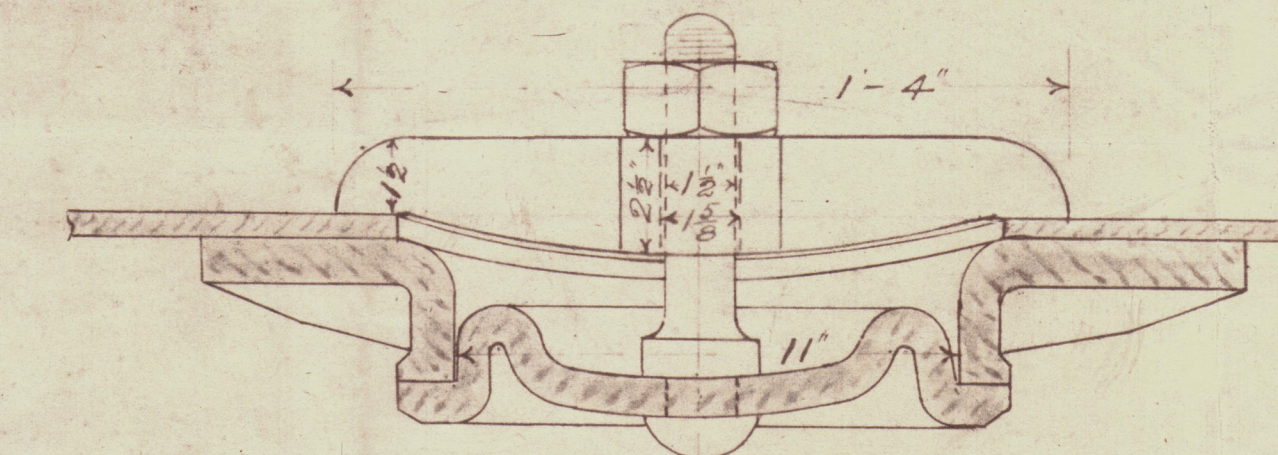
Working Pressure  
100 lbs per sq. in.



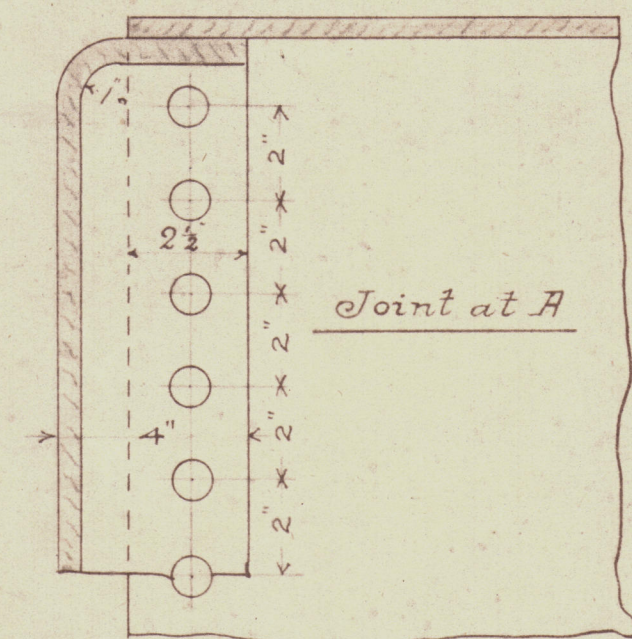
PLAN OF MANHOLE  
 $\frac{1}{4}$  FULL SIZE.



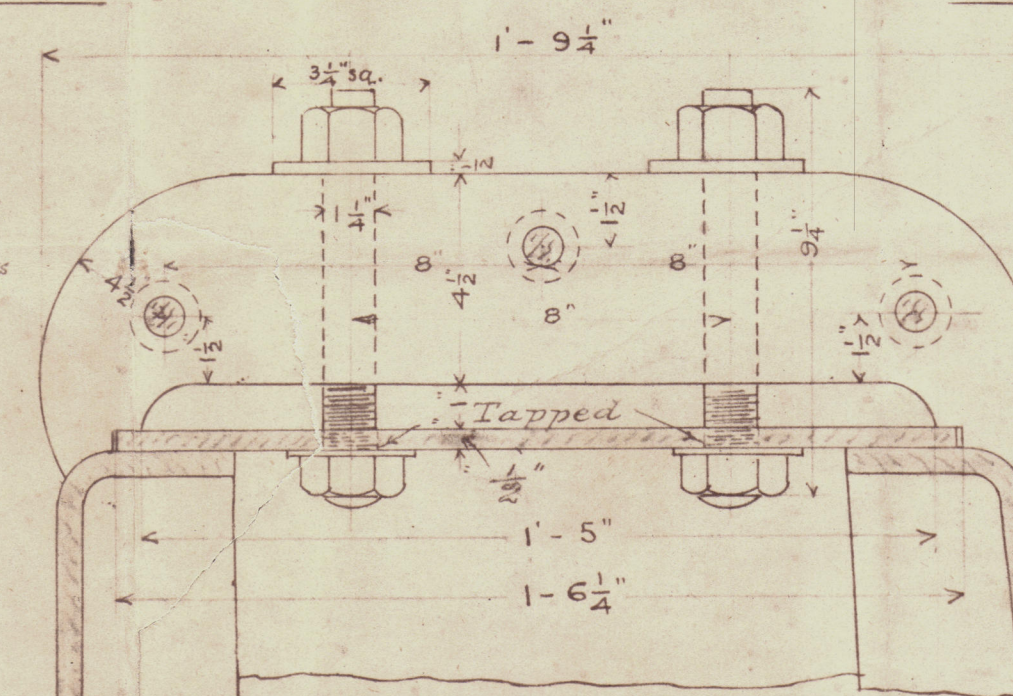
SHELL BUTT JOINT.



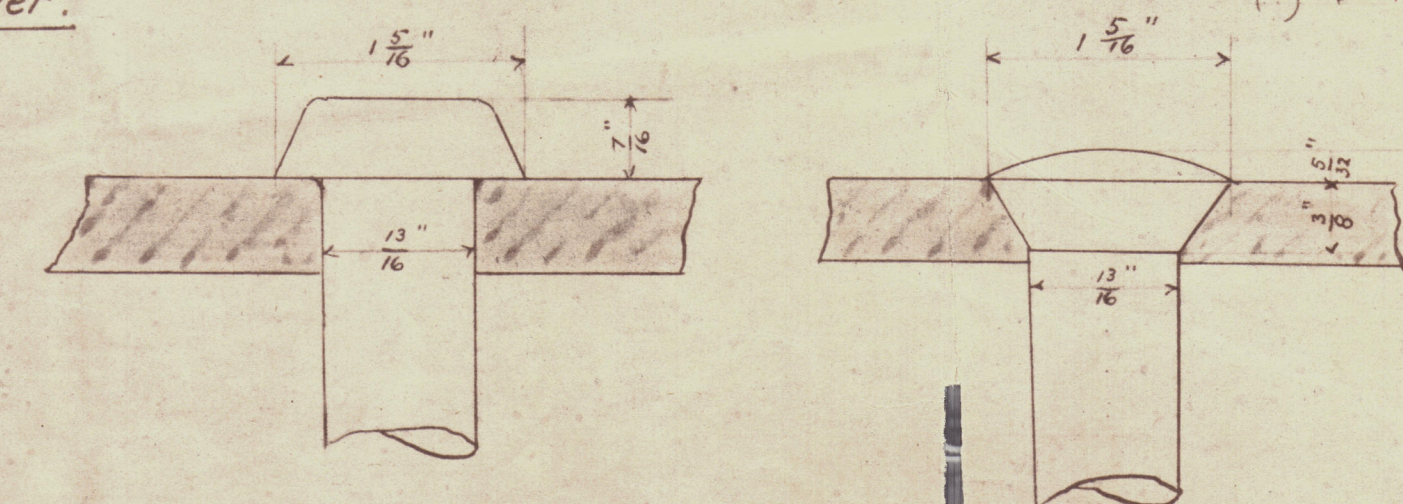
SECTION OF MANHOLE  
(McNeill's Patent)



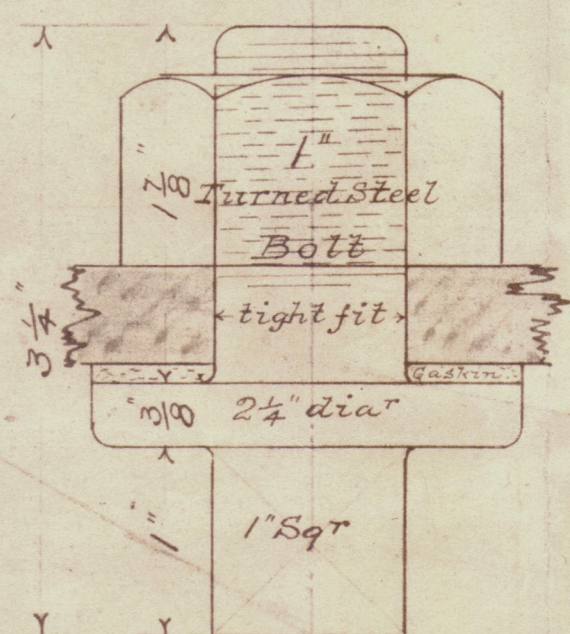
FLANGED JOINTS



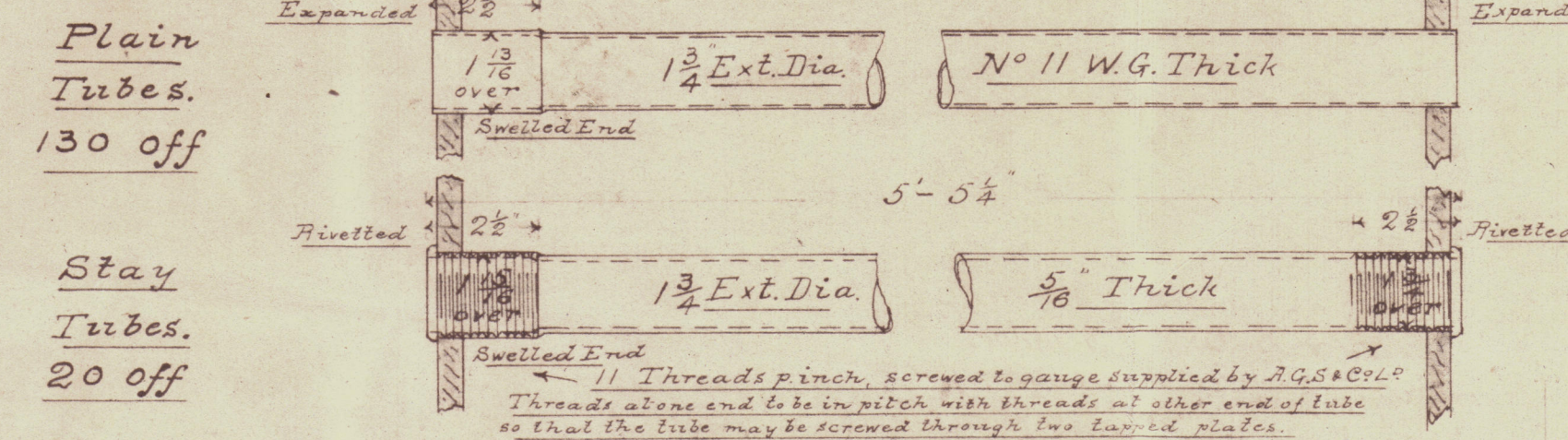
BRIDGE STAYS  
8 OFF required per boiler.



Joint at B  
Joint at C



DETAIL OF BOLT  
AT DRAIN HOLE D  
1 off



Plain Tubes.  
130 off

Stay Tubes.  
20 off

172 A & C to K

22.10.06

22.10.06

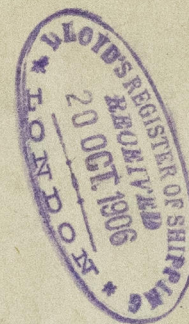


Register Foundation



*Dublin*

DVB99-0181



© 2021

Lloyd's Register  
Foundation