

ALL COMMUNICATIONS TO BE ADDRESSED TO THE FIRM, AND NOT TO INDIVIDUALS.

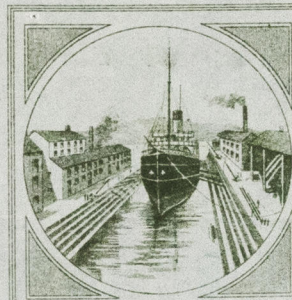
Telegrams:-
"DOCKS, PASSAGE-WEST."

Telephone No 1201.

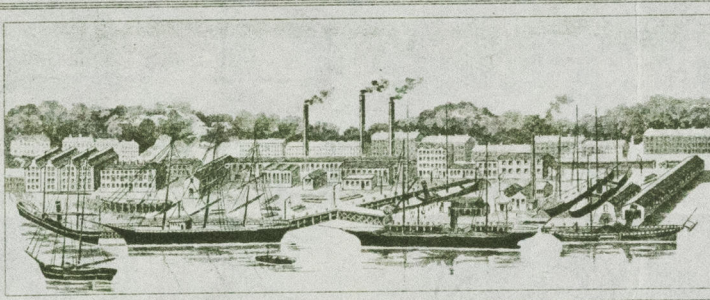
THE CHANNEL DRY DOCKS SHIPBUILDING & ENGINEERING CO



Contractors to
H. M. GOVERNMENT, THE ADMIRALTY, THE WAR OFFICE, THE IRISH LIGHTS COMMISSIONERS, SALVAGE CONTRACTORS, ETC. ETC.
ALL ESTIMATES & OFFERS ARE SUBJECT TO THE COMPANY'S PRINTED CONDITIONS.

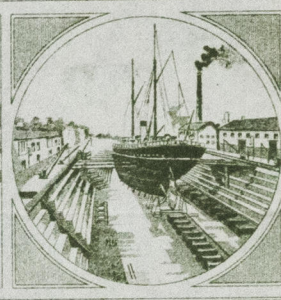


RUSHBROOKE DOCK 435 FEET LONG by
60 FEET WIDE ENTRANCE & 16 FT. WATER ON SILL.



GRANARIES.

ROYAL VICTORIA DOCK. ALBERT TREBLE DOCK.
COMPLETE ELECTRIC LIGHT INSTALLATION.



ROYAL VICTORIA DOCK 370 FEET LONG by
82 FEET WIDE ENTRANCE & 21 FT. WATER ON SILL.

Passage West. Co. Cork.

August. 20th 1903

Herbert W Dove Esq
Lloyds Surveyor.
Queenstown.

Dear Sir;

We beg to submit the Steamer "BUFFALO", built by the Thames Iron Works in 1866, for the ^{*}100 A1. Class. She was built for the War Department and her scantlings etc generally, we submit are considerably in excess of the 100 A.I. requirements.

She was re-engined in 1889 and had new Boiler. We are endeavouring to obtain the material tests of the boiler.

We beg to enclose you herewith, midship section, and we shall be glad to hear that she is eligible accordingly.

We may remark that it will be found on survey that she is a remarkable instance of the condition an iron ship may maintained in, showing absolutely no waste in any part of her

© 2019
Lloyd's Register
Foundation
CR1493-0367(1/2)

The Channel Dry Docks,
Shipbuilding & Engineering Co.

Continued to _____

August 20th 193

of course she has done but very little work, has always been close ceiled, and carefully attended to.

We shall be glad if you will let us have as early a reply as possible, as we have an urgent trade for her.

Yours faithfully,

THE CHANNEL DRYDOCKS SHIPBUILDING
& ENGINEERING CO.

Oliver S. S. S. S.
Managing Director

per J. E. J.



© 2019

Lloyd's Register
Foundation

CR1693-0367(2/2)