

MIDSHIP SECTION

SCALE 1" = 1 FOOT.

25.8.03

Spanning Number, Main Deck Lloyd's Rule Dimensions, Raised Quarter

Depth	15.25	13.3
1/2 Breadth	10.66	10.72
1/2 Girth	20.50	20.50
1st No	144.1	44.52
	153	153
	133.23	13.356
	220.8	22.260
	444.1	44.52
	681.56	68.156

2 No 6794.13

Little 28 ft.
R.Q. 61.5 ft.

Proportion $\frac{1}{15} = 11.325 \frac{1}{15} = 7.17$

Equipment No 7291.56 - f

Deck stringer 12 x 5/8 fore and aft
Angles 3 x 3 x 3/8 also watertight angle 9 x 3 1/2 x 7/16
Hold stringer 12 x 1/2 angle 2 1/2 x 2 1/2 x 3/8
W.T. Bulkheads 1/4 plate stiffeners 2 1/2 x 2 1/2 x 3/8 2'-6" apart
all shell butts double riveted throughout
Deck 7 x 3 Dantyc deal.

Keel centre plate 21 x 1/2
- side bars (2) 6 x 1
- Continuous angles on top edge 3 x 3 x 3/8
Stem centre plate 1/2 thick; side bars 6 x 1
Stem Post: Body Post 6 1/2 x 3, Rudder Post 6 x 2 1/2
Rudder 3 x 2 1/2 x 21
Frames 3 x 3 x 3/8 spaced 14 in for 3/5 length
Reverse frames 2 1/2 x 2 1/4 x 5/16 all to Upper & R.Q. Decks on every frame.
Floors 15" deep 3/8 thick
Middle line keelson horizontal plate 24 x 1/16
Side 10 x 12 x 3/8
Intercostal plates 3/8
Intercostal angle & connecting angle 3 x 3 x 3/8

Bulge keelson double angle 3 x 3 x 3/8
Side stringer plate 12 x 1/2
Angles 2 1/2 x 2 1/2 x 3/8
Hold Shifting beams to 5 x 4 x 3/8 Bull Tees
Upper R.Q. Deck Beams 5 x 4 x 3/8 to alternate frames.
Hold beam. portable as shown 5 x 4 x 3/8 Bull Tees.
Rudder stock 4 1/2" dia.

FRAME ANGLE IRON 3 x 3 x 3/8
REVERSE FRAMES 2 1/2 x 2 1/4 x 5/16
FLOOR PLATES 1'-3" DEEP AT MIDDLE.
" " 3/8 THICK.

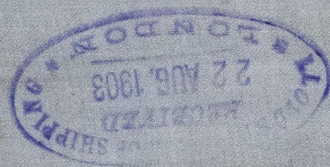
Full Size.

Queenstown.
Herbert McDove.
21.8.03

20.8.25

27-21 ~~100~~ 2-81 ~~100~~ 1000
 22-01 ~~100~~ 2-81 ~~100~~ 1000
 00-25 ~~100~~ 2-81 ~~100~~ 1000
 11-14 ~~100~~ 2-81 ~~100~~ 1000
 12-1 ~~100~~ 2-81 ~~100~~ 1000
 13-1 ~~100~~ 2-81 ~~100~~ 1000
 14-1 ~~100~~ 2-81 ~~100~~ 1000
 15-1 ~~100~~ 2-81 ~~100~~ 1000
 16-1 ~~100~~ 2-81 ~~100~~ 1000
 17-1 ~~100~~ 2-81 ~~100~~ 1000
 18-1 ~~100~~ 2-81 ~~100~~ 1000
 19-1 ~~100~~ 2-81 ~~100~~ 1000
 20-1 ~~100~~ 2-81 ~~100~~ 1000
 21-1 ~~100~~ 2-81 ~~100~~ 1000
 22-1 ~~100~~ 2-81 ~~100~~ 1000
 23-1 ~~100~~ 2-81 ~~100~~ 1000
 24-1 ~~100~~ 2-81 ~~100~~ 1000
 25-1 ~~100~~ 2-81 ~~100~~ 1000
 26-1 ~~100~~ 2-81 ~~100~~ 1000
 27-1 ~~100~~ 2-81 ~~100~~ 1000
 28-1 ~~100~~ 2-81 ~~100~~ 1000
 29-1 ~~100~~ 2-81 ~~100~~ 1000
 30-1 ~~100~~ 2-81 ~~100~~ 1000
 31-1 ~~100~~ 2-81 ~~100~~ 1000
 32-1 ~~100~~ 2-81 ~~100~~ 1000
 33-1 ~~100~~ 2-81 ~~100~~ 1000
 34-1 ~~100~~ 2-81 ~~100~~ 1000
 35-1 ~~100~~ 2-81 ~~100~~ 1000
 36-1 ~~100~~ 2-81 ~~100~~ 1000
 37-1 ~~100~~ 2-81 ~~100~~ 1000
 38-1 ~~100~~ 2-81 ~~100~~ 1000
 39-1 ~~100~~ 2-81 ~~100~~ 1000
 40-1 ~~100~~ 2-81 ~~100~~ 1000
 41-1 ~~100~~ 2-81 ~~100~~ 1000
 42-1 ~~100~~ 2-81 ~~100~~ 1000
 43-1 ~~100~~ 2-81 ~~100~~ 1000
 44-1 ~~100~~ 2-81 ~~100~~ 1000
 45-1 ~~100~~ 2-81 ~~100~~ 1000
 46-1 ~~100~~ 2-81 ~~100~~ 1000
 47-1 ~~100~~ 2-81 ~~100~~ 1000
 48-1 ~~100~~ 2-81 ~~100~~ 1000
 49-1 ~~100~~ 2-81 ~~100~~ 1000
 50-1 ~~100~~ 2-81 ~~100~~ 1000
 51-1 ~~100~~ 2-81 ~~100~~ 1000
 52-1 ~~100~~ 2-81 ~~100~~ 1000
 53-1 ~~100~~ 2-81 ~~100~~ 1000
 54-1 ~~100~~ 2-81 ~~100~~ 1000
 55-1 ~~100~~ 2-81 ~~100~~ 1000
 56-1 ~~100~~ 2-81 ~~100~~ 1000
 57-1 ~~100~~ 2-81 ~~100~~ 1000
 58-1 ~~100~~ 2-81 ~~100~~ 1000
 59-1 ~~100~~ 2-81 ~~100~~ 1000
 60-1 ~~100~~ 2-81 ~~100~~ 1000
 61-1 ~~100~~ 2-81 ~~100~~ 1000
 62-1 ~~100~~ 2-81 ~~100~~ 1000
 63-1 ~~100~~ 2-81 ~~100~~ 1000
 64-1 ~~100~~ 2-81 ~~100~~ 1000
 65-1 ~~100~~ 2-81 ~~100~~ 1000
 66-1 ~~100~~ 2-81 ~~100~~ 1000
 67-1 ~~100~~ 2-81 ~~100~~ 1000
 68-1 ~~100~~ 2-81 ~~100~~ 1000
 69-1 ~~100~~ 2-81 ~~100~~ 1000
 70-1 ~~100~~ 2-81 ~~100~~ 1000
 71-1 ~~100~~ 2-81 ~~100~~ 1000
 72-1 ~~100~~ 2-81 ~~100~~ 1000
 73-1 ~~100~~ 2-81 ~~100~~ 1000
 74-1 ~~100~~ 2-81 ~~100~~ 1000
 75-1 ~~100~~ 2-81 ~~100~~ 1000
 76-1 ~~100~~ 2-81 ~~100~~ 1000
 77-1 ~~100~~ 2-81 ~~100~~ 1000
 78-1 ~~100~~ 2-81 ~~100~~ 1000
 79-1 ~~100~~ 2-81 ~~100~~ 1000
 80-1 ~~100~~ 2-81 ~~100~~ 1000
 81-1 ~~100~~ 2-81 ~~100~~ 1000
 82-1 ~~100~~ 2-81 ~~100~~ 1000
 83-1 ~~100~~ 2-81 ~~100~~ 1000
 84-1 ~~100~~ 2-81 ~~100~~ 1000
 85-1 ~~100~~ 2-81 ~~100~~ 1000
 86-1 ~~100~~ 2-81 ~~100~~ 1000
 87-1 ~~100~~ 2-81 ~~100~~ 1000
 88-1 ~~100~~ 2-81 ~~100~~ 1000
 89-1 ~~100~~ 2-81 ~~100~~ 1000
 90-1 ~~100~~ 2-81 ~~100~~ 1000
 91-1 ~~100~~ 2-81 ~~100~~ 1000
 92-1 ~~100~~ 2-81 ~~100~~ 1000
 93-1 ~~100~~ 2-81 ~~100~~ 1000
 94-1 ~~100~~ 2-81 ~~100~~ 1000
 95-1 ~~100~~ 2-81 ~~100~~ 1000
 96-1 ~~100~~ 2-81 ~~100~~ 1000
 97-1 ~~100~~ 2-81 ~~100~~ 1000
 98-1 ~~100~~ 2-81 ~~100~~ 1000
 99-1 ~~100~~ 2-81 ~~100~~ 1000
 100-1 ~~100~~ 2-81 ~~100~~ 1000

$\lambda \cdot \frac{1}{2} = \frac{1}{2} \cdot 2 = 1 = \frac{1}{1}$ R.D. 10.2.4
 $\frac{1}{2} - \frac{1}{2} = 0$ R.D. 10.2.4



20.8.10
 20.8.10

525/1083