

016 CH
9/9/84

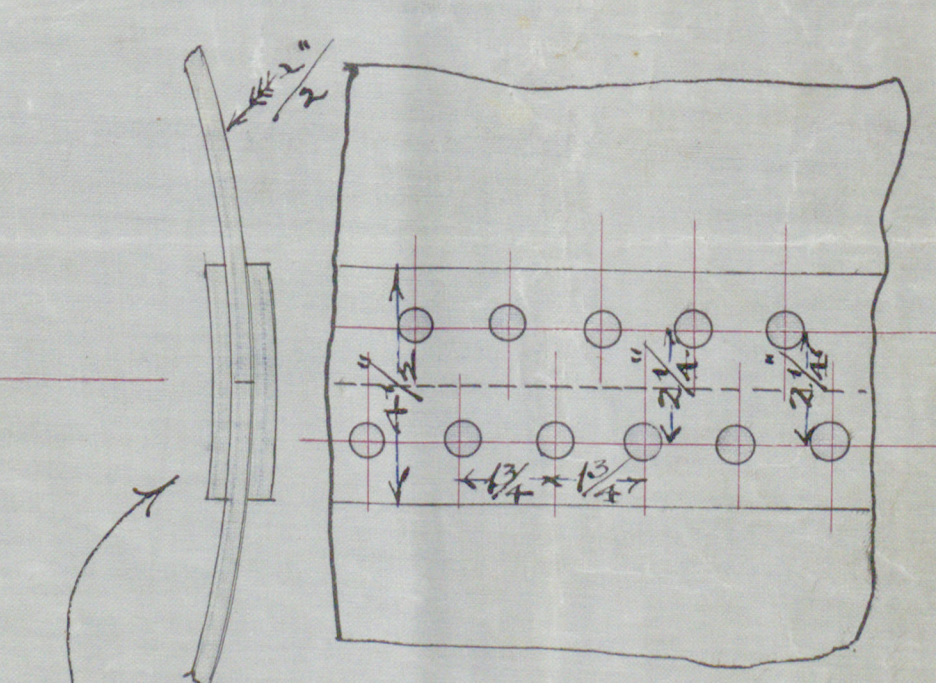
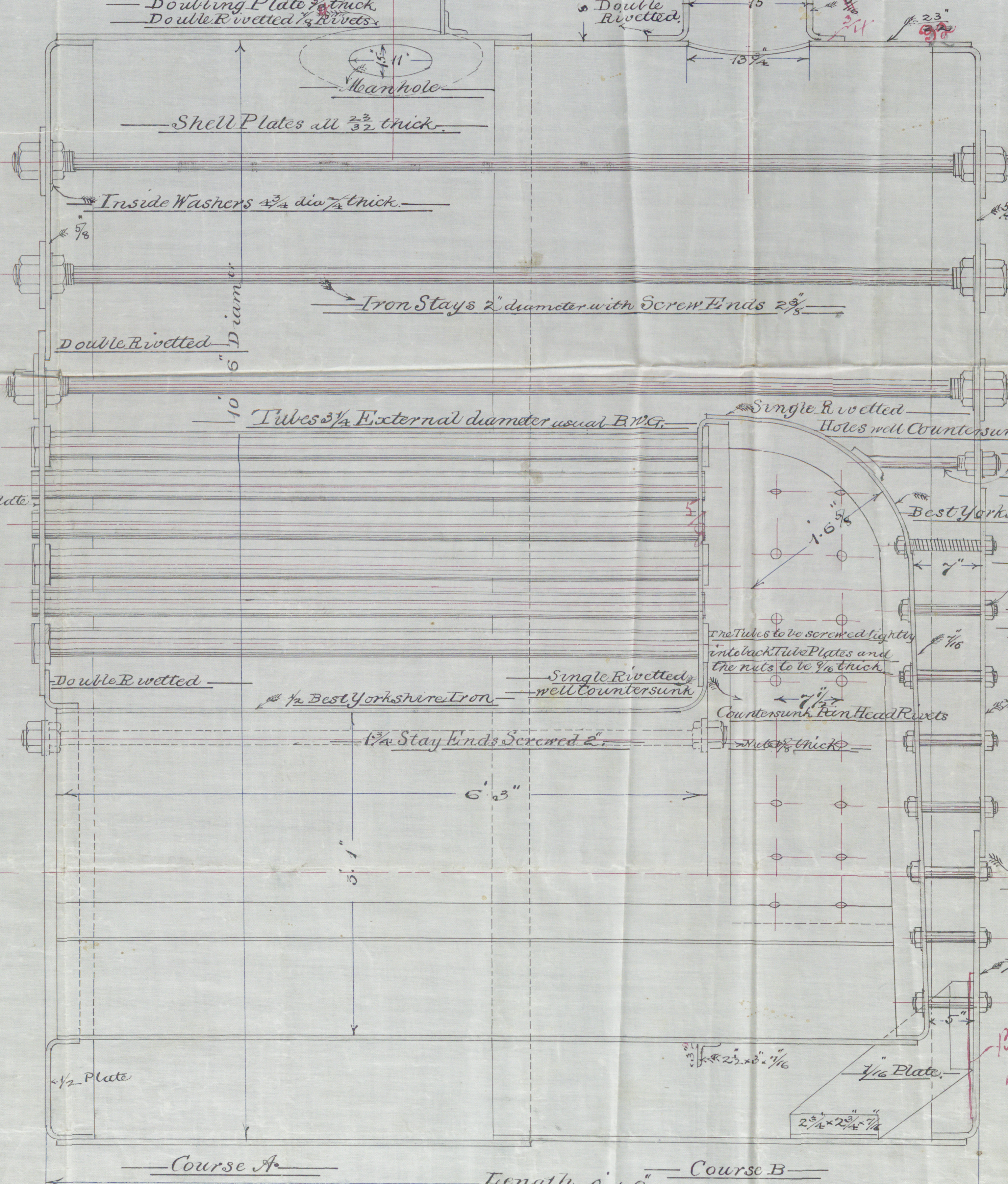
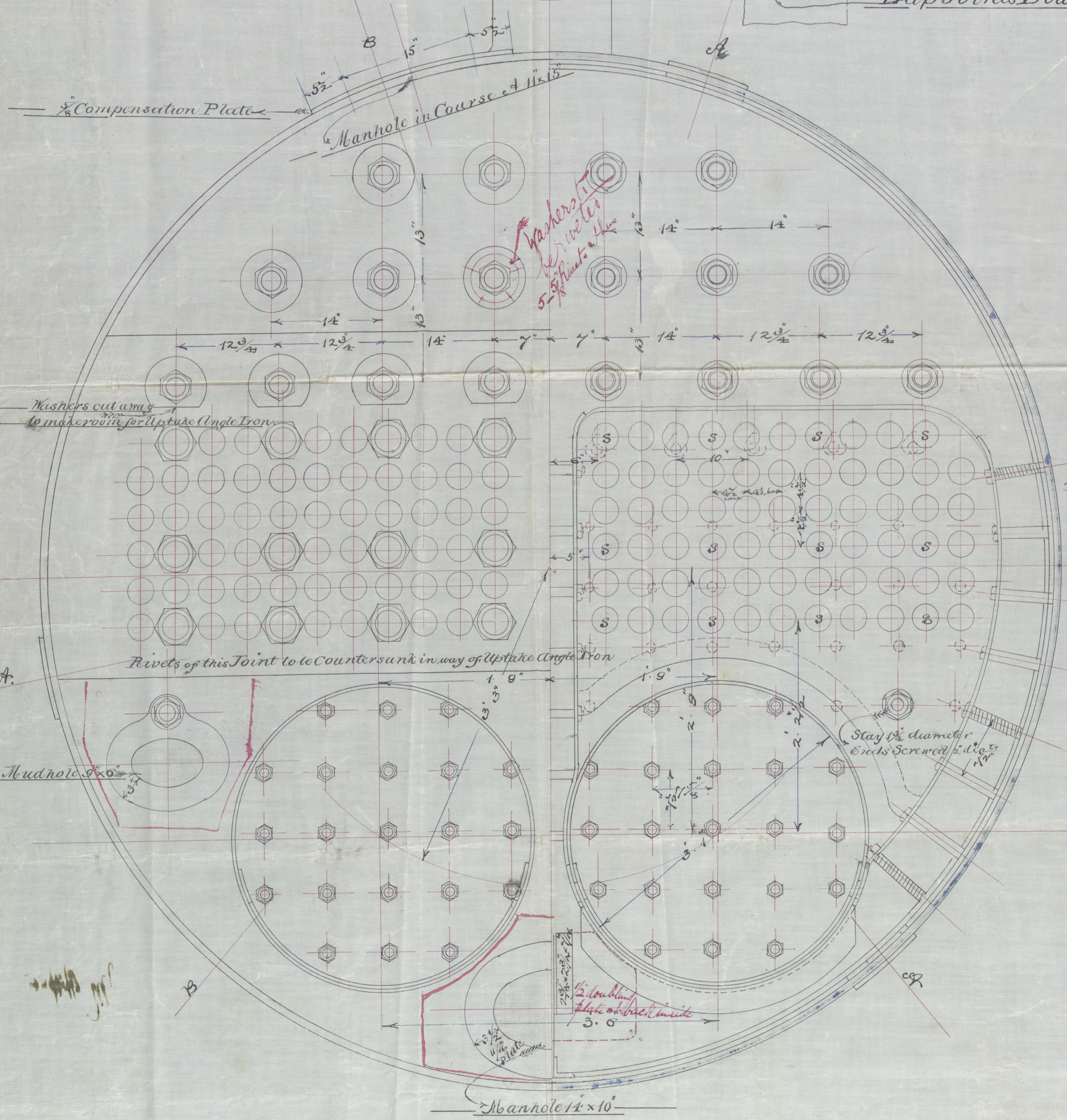
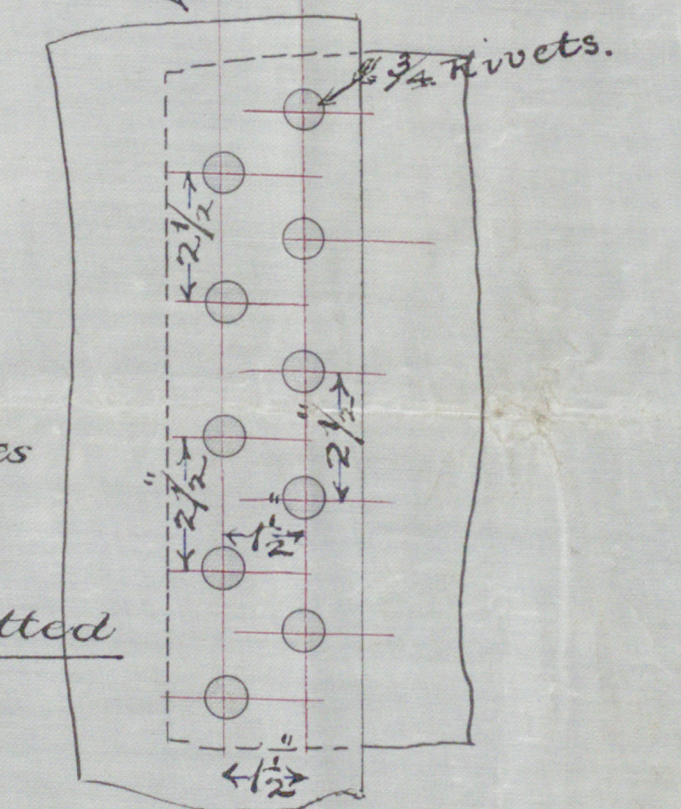
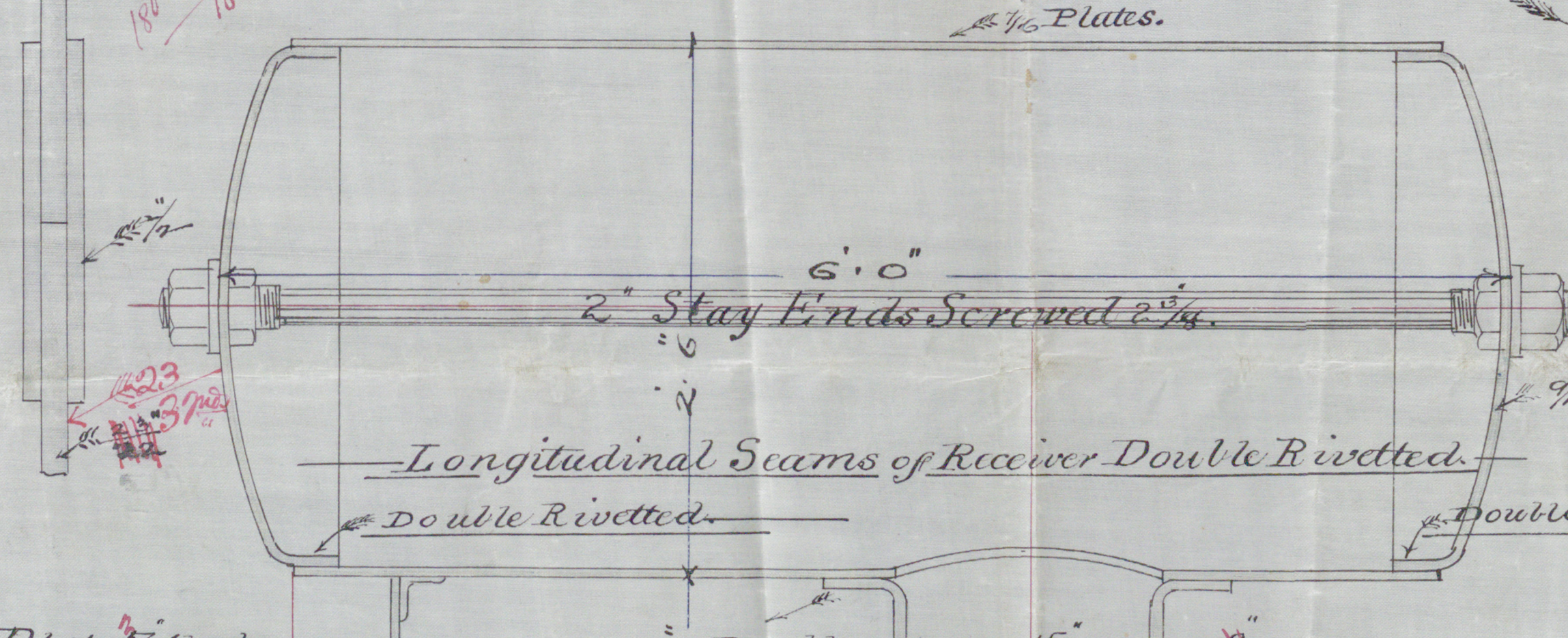
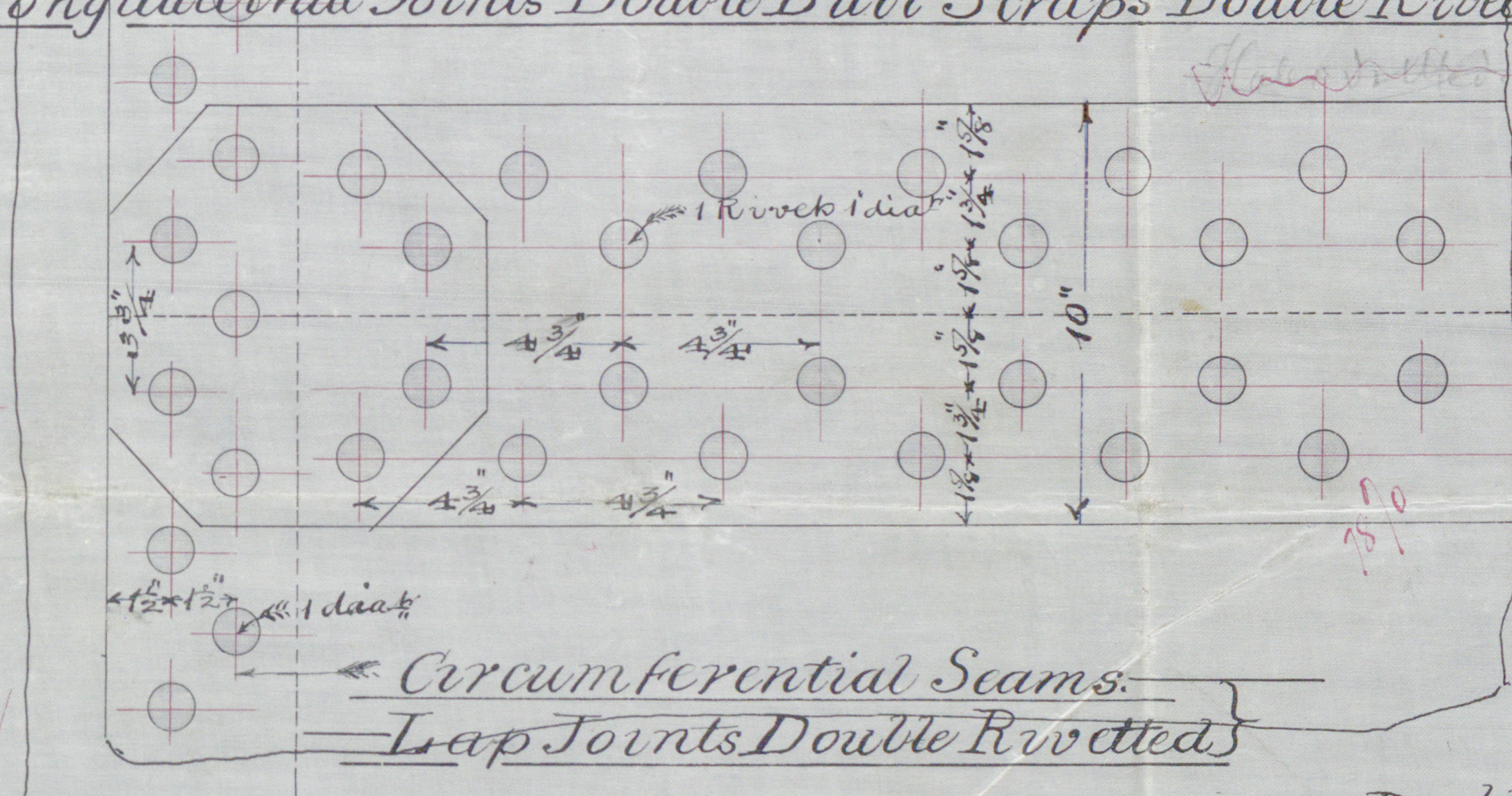
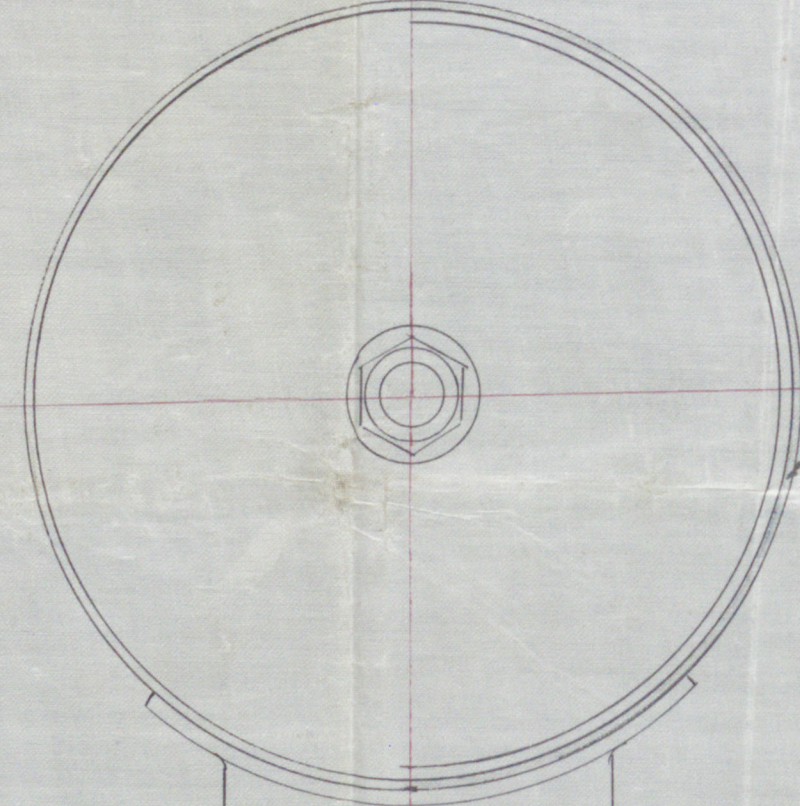
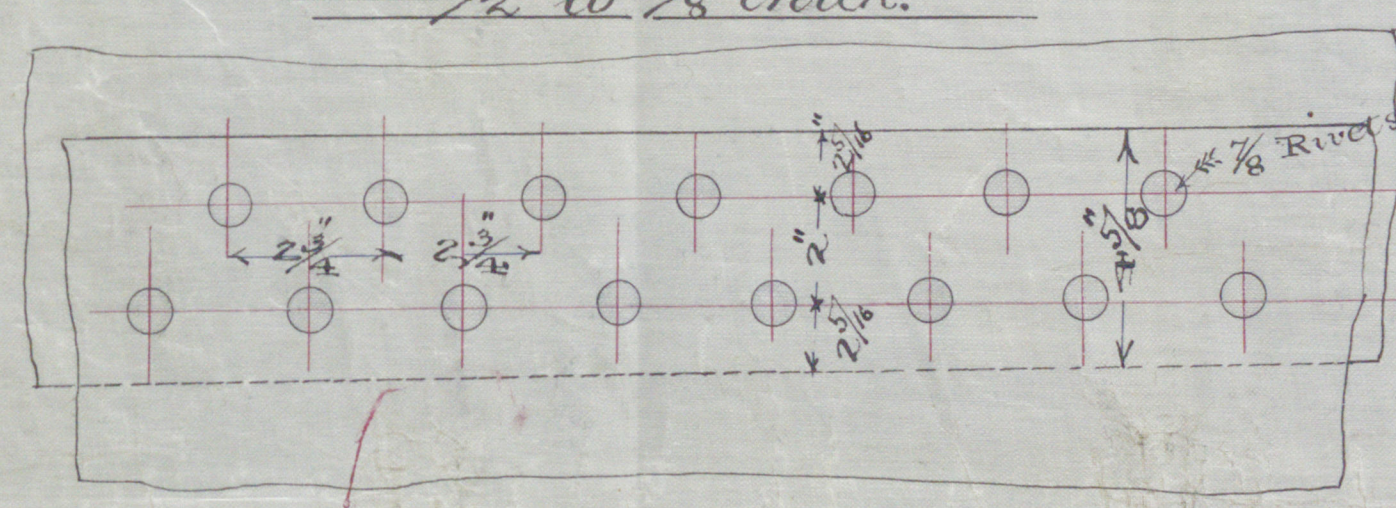
Shew & "Albion" Report No 2347

Working Pressure 90 lbs per Square Inch.

Double Rivetted Lap Joints in End Plates
7/8 to 1 inch thick.

Longitudinal Joints Double Butt Straps Double Rivetted

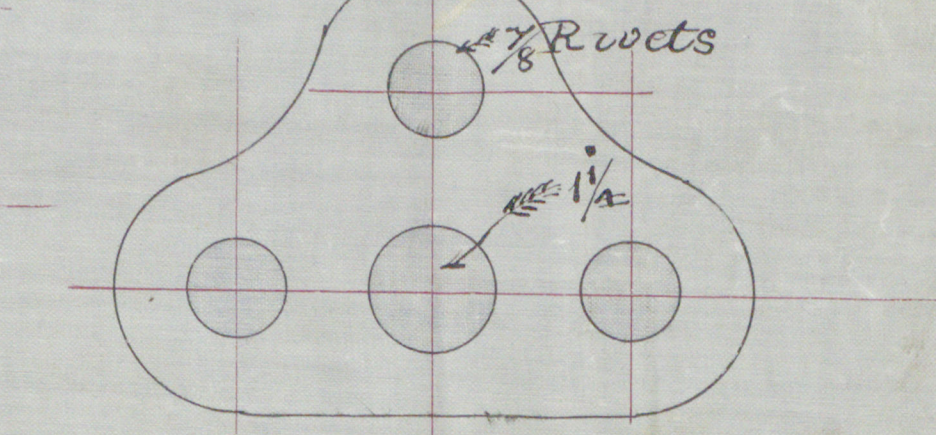
Plan of Rivetting for Steam Receiver



Furnace Rivetting
Butt Strap Joints
Single Rivetted

Single Rivetted
Holes well countersunk.
Palm End Stays 1 1/4 diameter,
ends Screwed 1/2 inch and Pitched
about 10° apart.
Best Yorkshire Iron.

Iron Stays 1 1/2 diameter, Screwed 1 1/2 inch threads
per inch Pitched 1/2 inch centres tapped tightly
into plates and Screwed inside uncut side
by nuts 1/2 inch thick.



Palm End Stays (Half Size)
for Crown of Combustion Chamber.
Double Rivetted

Back Plate to be
double with 1/2 inch plate

Scale 1 1/2 Inches to a Foot.
Rivetting Details 3 Inches to a Foot.

Plan of Rivetting for
Top and Sides of Combustion Chamber

