

Boiler Order No BB78

Messrs E. J. Caiger & Co<sup>o</sup> SS "Buckton"

To be constructed to pass Lloyd's Survey

1 off this

Scale 1" = 15'

Aug: 29/01.

Plates by Messrs John Spencer & Son.

## Plates Steel

## Rivets

all stays Iron.

Tubes

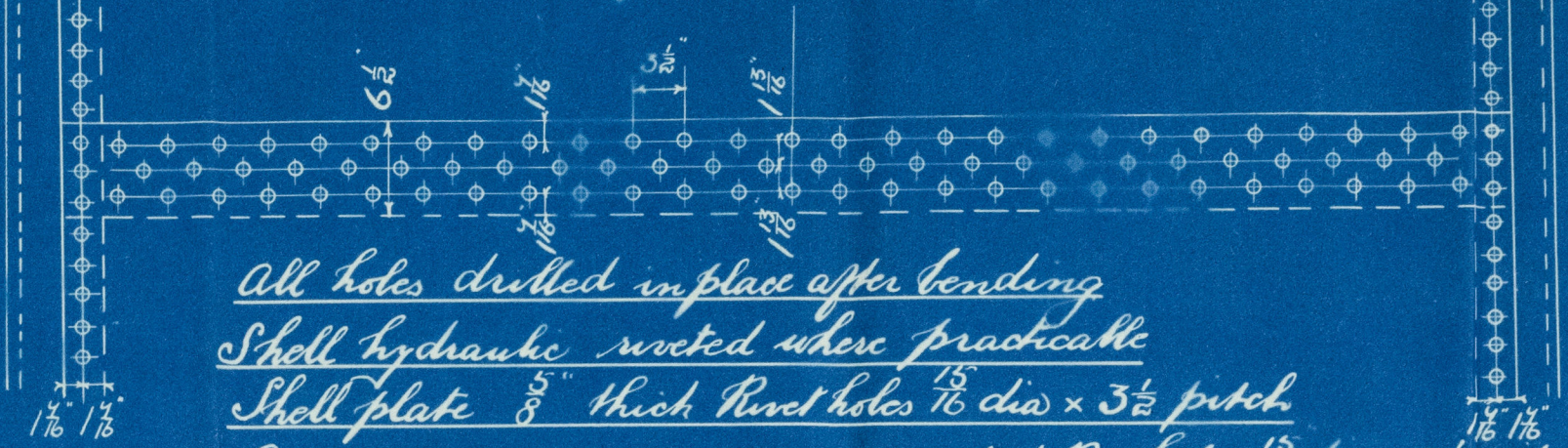
## Plan of Shell Riveting

### Strength of Joint

Plate 93.39

Rev. 819 10

Tensile strength of Shell plate 28 to 32 tons<sup>sq</sup>



All holes drilled in place after bending

Shell hydraulic riveted where practicable

Shell plate  $\frac{5}{8}$ " thick Rivet holes  $\frac{13}{16}$  dia  $\times 3\frac{1}{2}$  pitch

Circumferential seams single arched. Riv. holes  $\frac{15}{16}$  dia  $\times \frac{1}{8}$  pitch.

Heating Surface Sqr Ft.

Tubes 441

Furnaces. 69

Combustion Chambers. 68

Tube Plates 26

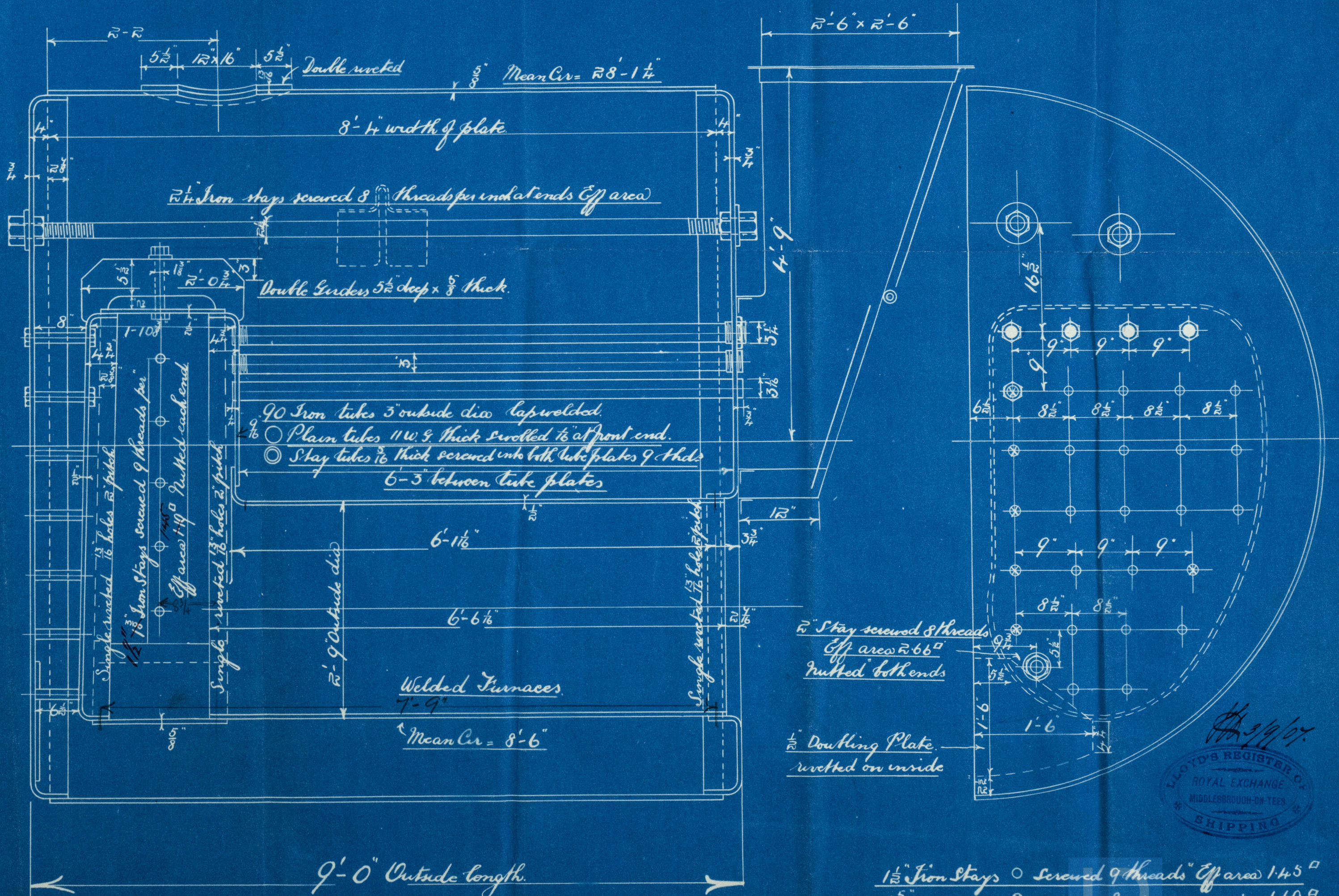
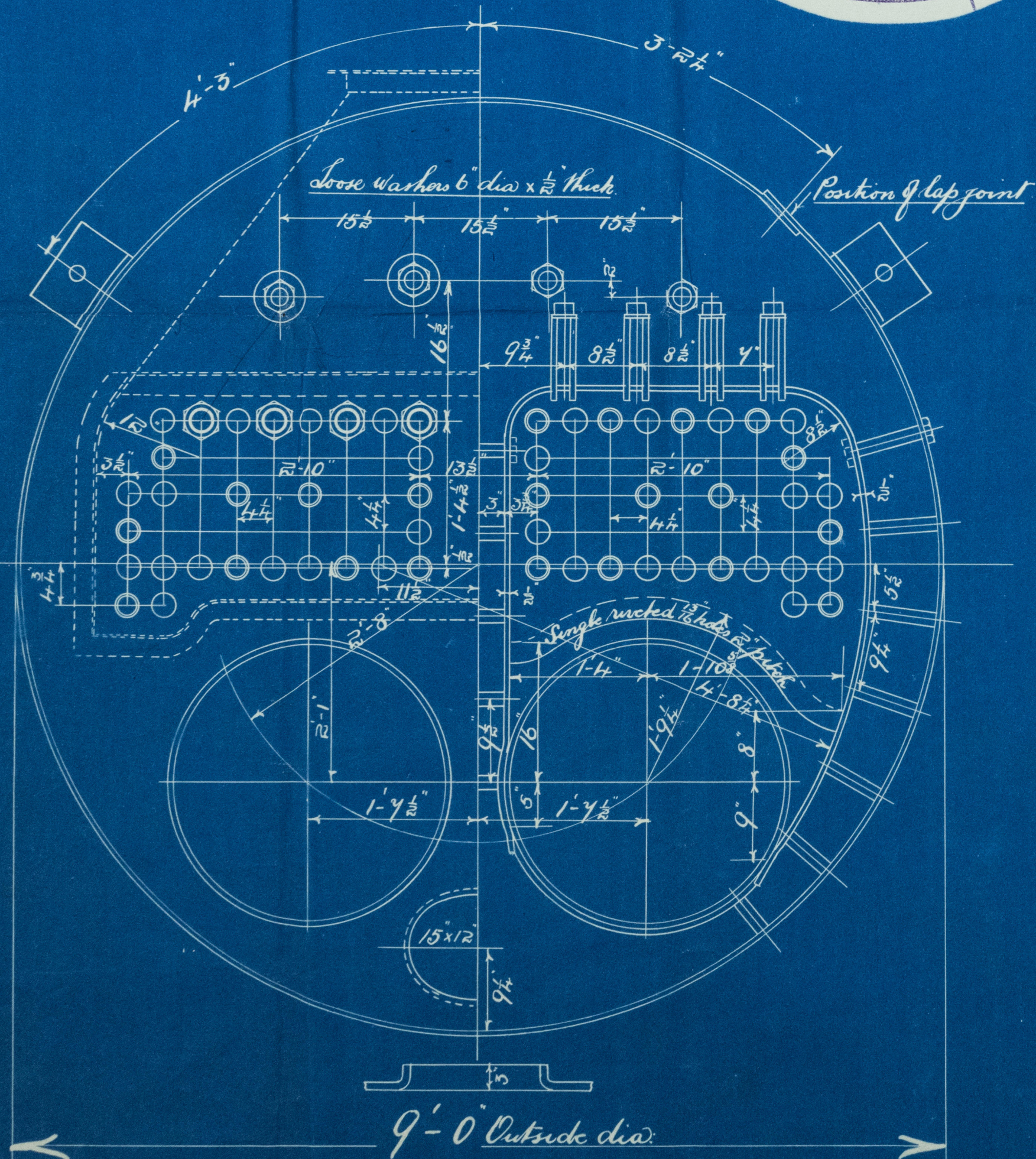
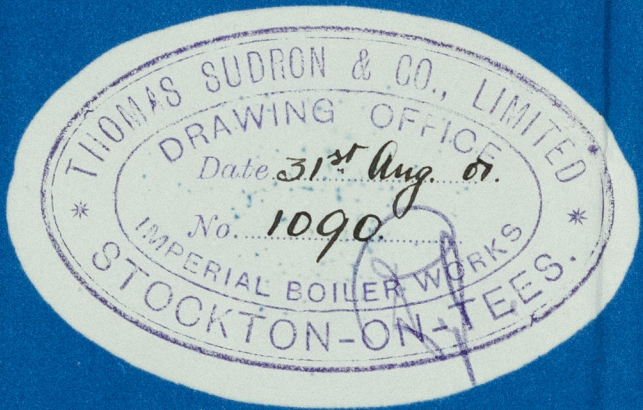
Total 604 Sqr. ft.

Total Gate Area 26.5 ft

Firebars 5'-0" long

Working Pressure 90 lbs per sqr inch

Test      do      180      "      "      "      "      "



1 1/8"	Iron Stays	○	Screwed 9 threads	Off area	1.45	°	
1 1/2"	"	⊗	"	8	"	1.69	°
1 3/4"	"	●	"	8	"	1.99	°

All stays in backs to be ruttet each end.



Cms W-1803



© 2021

Lloyd's Register  
Foundation