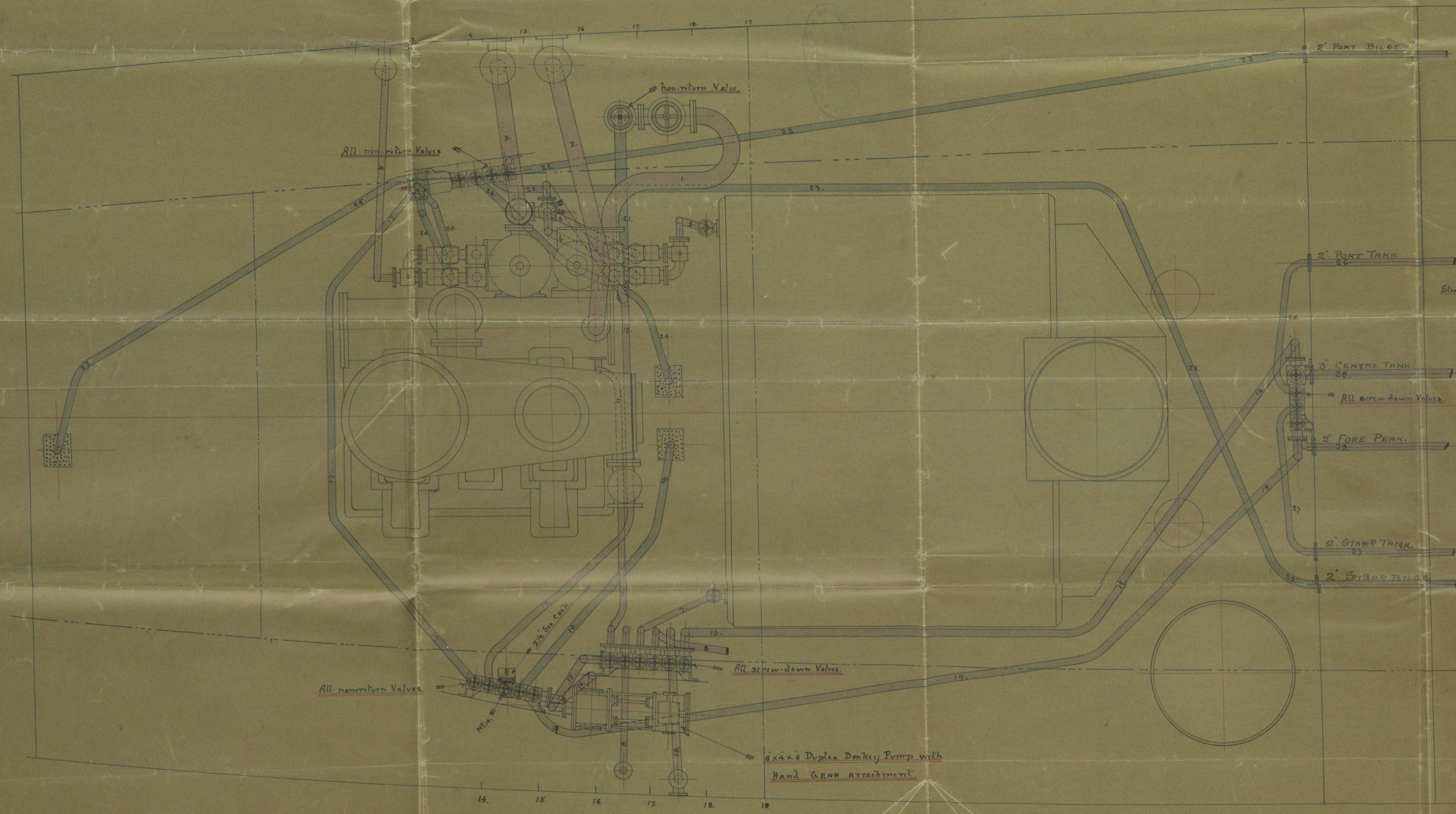


LLOYD'S REGISTER OF SHIPS
 30.3.98

S.S. LUDDICK
 28.3.98

S.S. N° 118.
 PUMPING ARRANGEMENT FOR ENGINES N° 459/753-4
 SCALE 1/2 INCH = ONE FOOT.
 BARROW REPORT N° 853
 S.S. "LUDDICK"

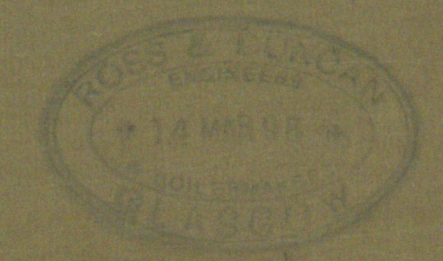
30.3.98
 28.3.98



List of Pipes

Ref.	Purpose	Size	Material
1.	Main Injection	5/8"	Copper
2.	Circulating Pump discharge	6"	"
3.	Air	5/8"	"
4.	Bilge	2 1/2"	"
5.	Main Feed	2 1/2"	"
6.	Feed Pump suction from Hotwell	2 1/2"	"
7.	6 Donkey Pump discharge to Main Boiler	2"	"
8.	6 " " " " " " " "	2"	"
9.	6 " " " " " " " "	2"	"
10.	6 " " " " " " " "	2 1/2"	"
11.	6 " " " " " " " "	2"	"
12.	6 " " " " " " " "	2 1/2"	"
13.	6 " " " " " " " "	2 1/2"	"
14.	6 " " " " " " " "	2 1/2"	"
15.	6 " " " " " " " "	2 1/2"	"
16.	6 " " " " " " " "	2 1/2"	"
17.	6 " " " " " " " "	2 1/2"	"
18.	6 " " " " " " " "	2 1/2"	"
19.	6 " " " " " " " "	2 1/2"	"
20.	Bilge Pump suction from Hotwell	2 1/2"	"
21.	Bilge Injection	4"	"
22.	Suction from Hold Port Thr. Hotwell	2"	"
23.	" " " " " " " "	2"	"
24.	" " " " " " " "	2"	"
25.	" " " " " " " "	2"	"
26.	" " " " " " " "	2"	"
27.	" " " " " " " "	2"	"
28.	" " " " " " " "	3"	"
29.	" " " " " " " "	2"	"

Steam Discharge Pipes T. Copper
 Bilge Pipes Lead
 Tank Pipes Lead



29/3/98

PUMPING ARRANGEMENTS

R. Williamson & Sons No. 118.

S. S. "LUDDICK"

BARROW REPORT No 853

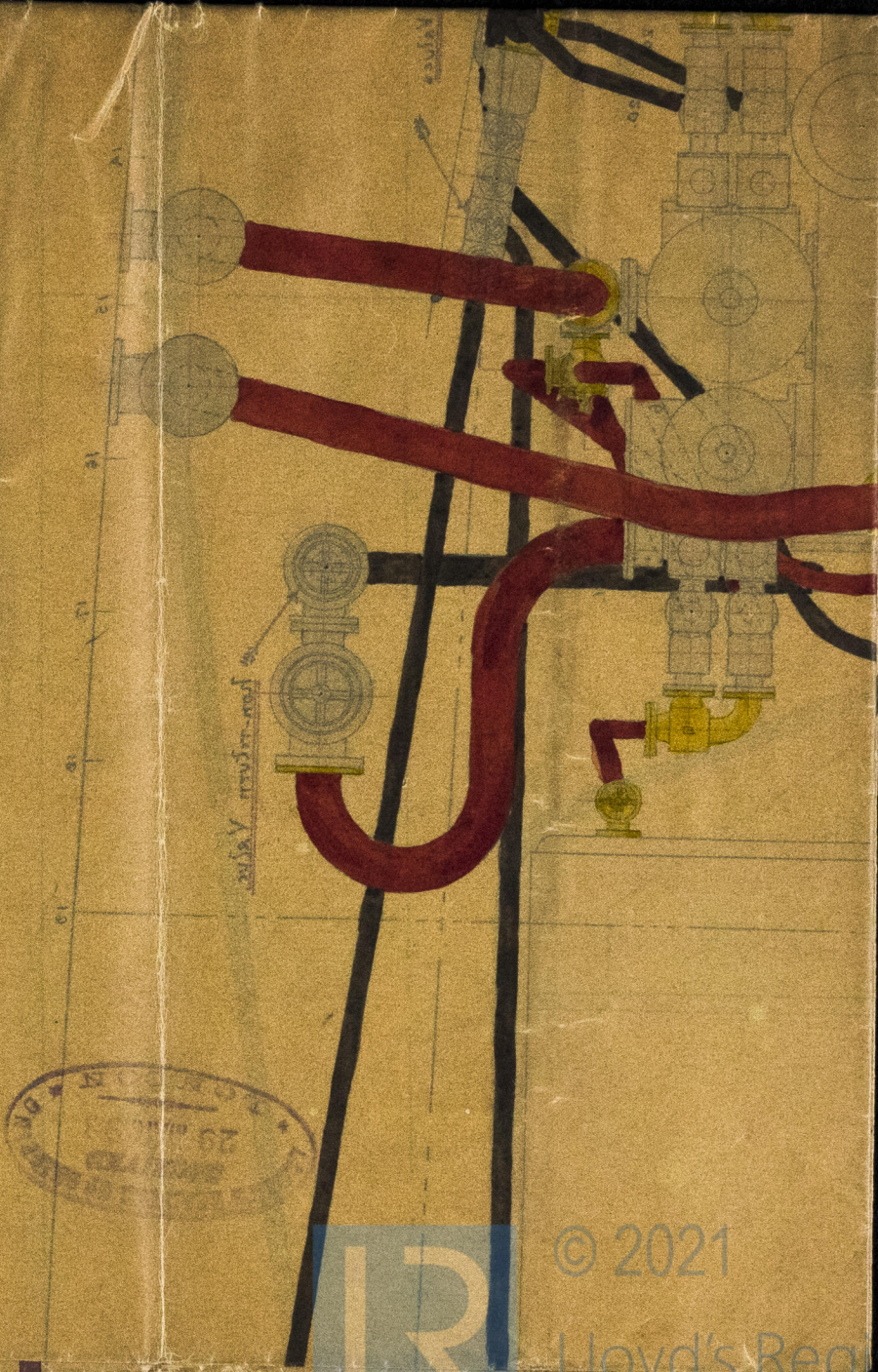
BRW 46-0079

PUMPING ARRANGEMENT FOR ENGINE No 1

22 No 118

2 1/2 INCH ONE FOOT

S. S. "LUDDICK"
BARROW REPORT No 853



© 2021

Lloyd's Register
Foundation