

BRW 46-0057. (1/3)

PRIVATE GRADING DOCK 275 FEET LONG.

24th June 19 07
GRAVEGEMOUTH AND GREENOCK DOCKYARD CO.,
GREENOCK, N.B.

This Enclosure is to be Sent to

Ups No.

Tracing No.

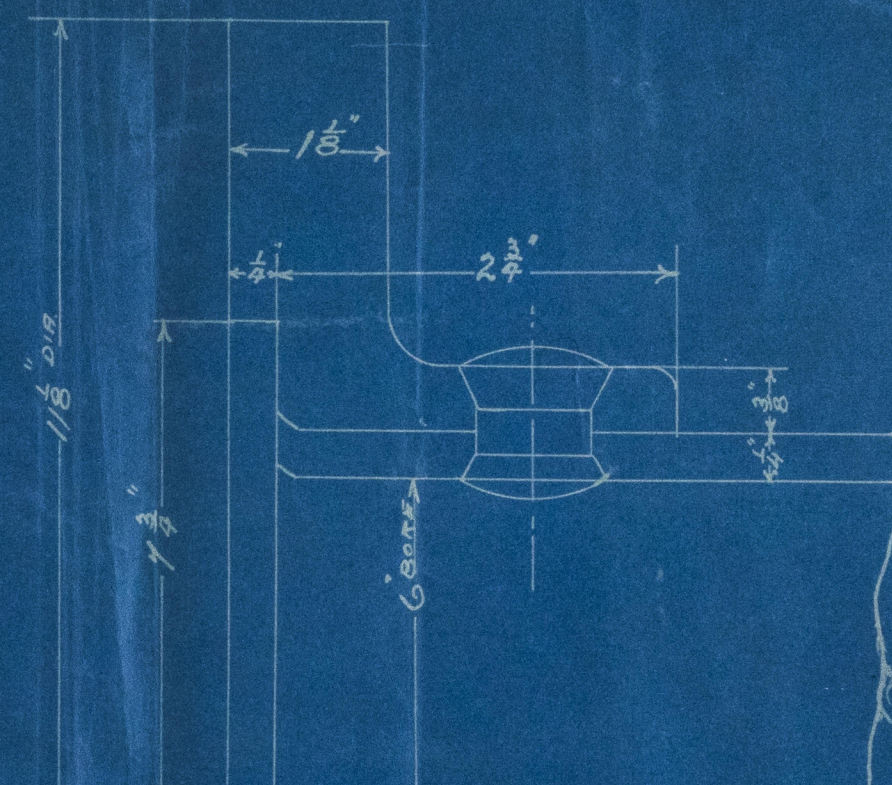
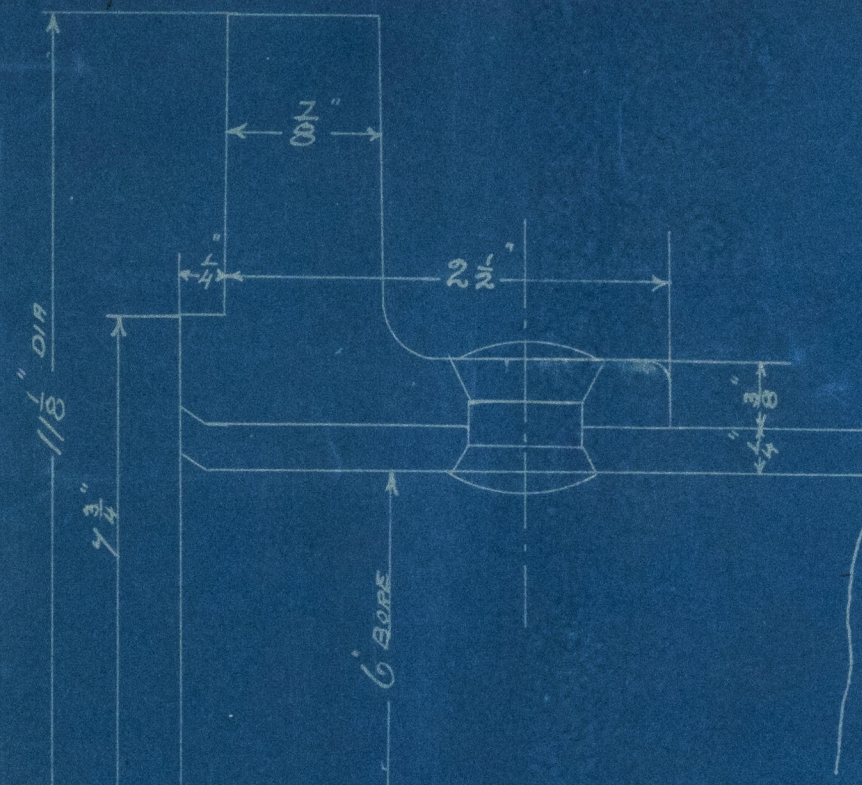
158

Lloyd's
Foundation

FOR ENCLOSURE.

Lloyds. —

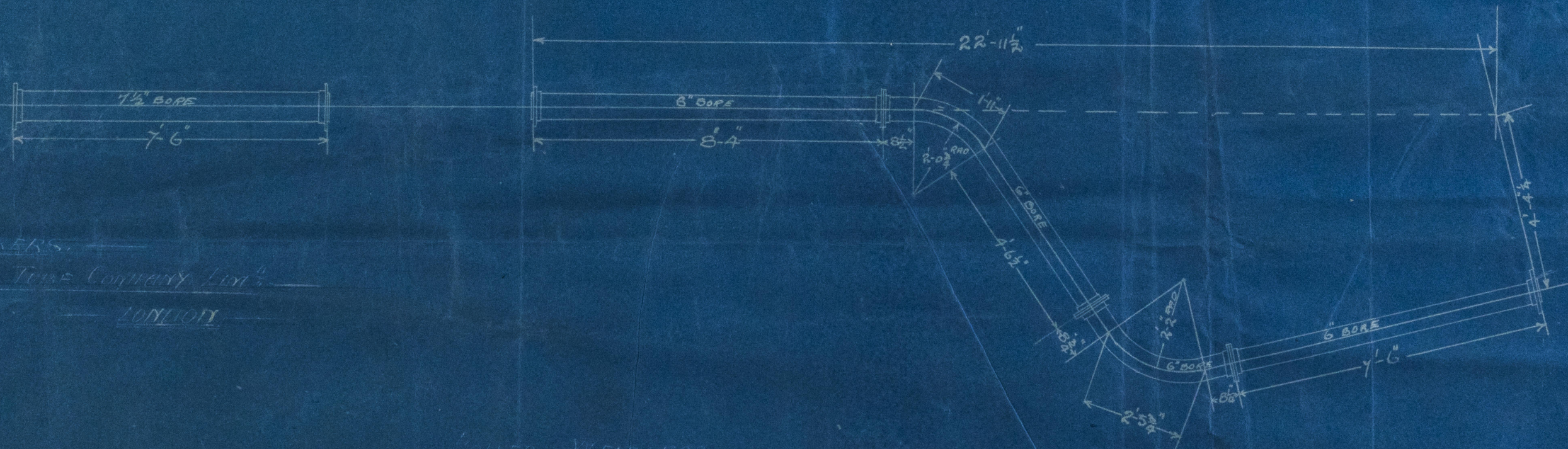
BRW 46-00571 (2/3)



FLANGES SHRUNK ON TUBES & SECURED BY $\frac{5}{8}$ " RIVETS, ABOUT $1\frac{5}{8}$ " PITCH.

FULL SIZE SECTION OF FLANGES.

BRW 18/6/98
D.V.



MAKERS.
MANCHESTER TUBE COMPANY LTD.
LONDON

STEEL MAIN STEAM PIPES ENGINES NO. 266.

SCALE $\frac{3}{8}$ " = 1 FT. & FULL SIZE.

WORKING PRESSURE = 195 LBS PER \square "

TEST PRESSURE = 390 LBS PER \square "

