

25.1.93
31.8.93



Brw Plan No 679

Bl. "Nelly Rickmers"

Brw 1911/12

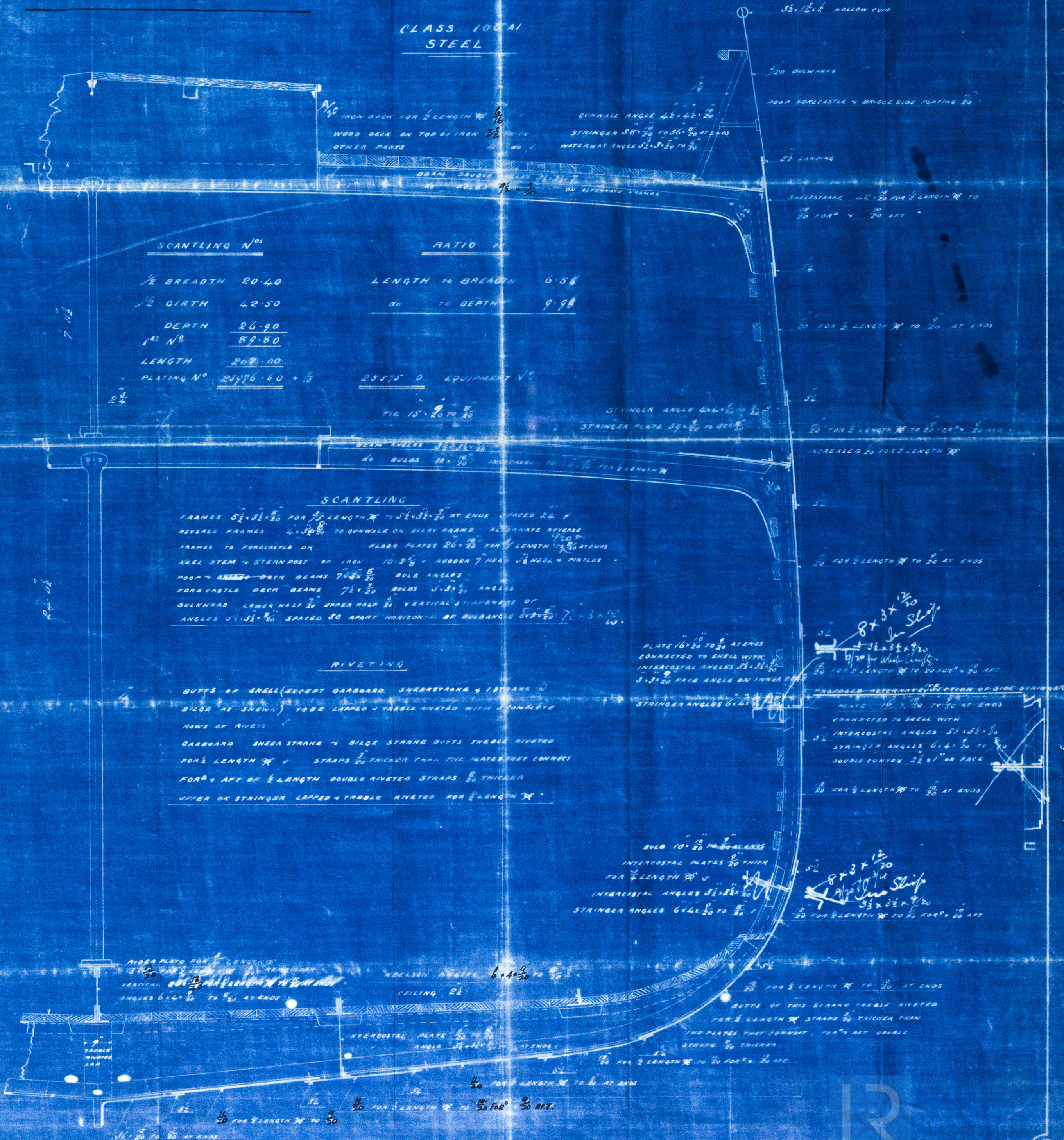
MIDSHIP SECTION

SAILING SHIP N^o 65

SCALE $\frac{1}{2}$ INCH = 1 FOOT

ANCHORS - 3B-15-1K.
CHAIN CABLES - 270 FUS @ $2\frac{1}{8}$ " DIA

CLASS 100A1
STEEL



SCANTLING N^{os}

1/2 BREADTH 20.40
1/2 GIRTH 42.50
DEPTH 26.90
1st N^o 89.80
LENGTH 267.00
PLATING N^o 25476.60 + 1/2

RATIO

LENGTH TO BREADTH 6.54
DO TO DEPTH 9.98

25575 0 EQUIPMENT N^o

TIE 15' 20" TO 20'

SCANTLING

FRAMES $5\frac{1}{2} \times 3\frac{1}{2} \times \frac{1}{2}$ FOR 1/2 LENGTH & $10 \times 3\frac{1}{2} \times \frac{1}{2}$ AT ENDS SPACED 24"
REVERSE FRAMES $4 \times 3\frac{1}{2} \times \frac{1}{2}$ TO GUNWALE ON EVERY FRAME ALTERNATE REVERSE
FRAMES TO FORECASTLE ON FLOOR PLATES $26 \times \frac{1}{2}$ FOR 1/2 LENGTH & $10 \times \frac{1}{2}$ AT ENDS
KEEL STEM & STERN POST OF IRON $10 \times 2\frac{1}{2} \times \frac{1}{2}$ RUBBER 7' HEAD $\frac{1}{2}$ KEEL & PINNLES
POOP & FORECASTLE DECK BEAMS $7 \times 4 \times \frac{1}{2}$ BULB ANGLES
FORECASTLE DECK BEAMS $7 \times 4 \times \frac{1}{2}$ BULBS $5 \times 3 \times \frac{1}{2}$ ANGLES
BULKHEAD LOWER HALF $\frac{1}{2}$ UPPER HALF $\frac{1}{2}$ VERTICAL STIFFENERS OF
ANGLES $5 \times 3\frac{1}{2} \times \frac{1}{2}$ SPACED 30" APART HORIZONTAL OF BULB ANGLE $6 \times 3 \times \frac{1}{2}$ 10'.

RIVETING

BUTTS OF SHELL (EXCEPT GARBBOARD SHEER STRAKE & BILGE) TO BE LAPED & TRIPLE RIVETED WITH 1 COMPLETE ROW OF RIVETS
GARBBOARD SHEER STRAKE & BILGE STRAKE BUTTS TRIPLE RIVETED FOR 1/2 LENGTH & STRAPS $\frac{1}{2}$ " THICKER THAN THE PLATES THEY CONNECT FOR 1/2 LENGTH DOUBLE RIVETED STRAPS $\frac{1}{2}$ " THICKER
UPPER OR STRINGER LAPED & TRIPLE RIVETED FOR 1/2 LENGTH &

PLATE 16×20 TO 20 AT ENDS
CONNECTED TO SHELL WITH
INTERCOSTAL ANGLES $3\frac{1}{2} \times 3\frac{1}{2} \times \frac{1}{2}$
 $8 \times 3 \times \frac{1}{2}$ FACE ANGLE ON INNER END

PROPOSED ALTERNATE SECTION OF SIDE STRINGER

PLATE 16×20 TO 20 AT ENDS
CONNECTED TO SHELL WITH
INTERCOSTAL ANGLES $3\frac{1}{2} \times 3\frac{1}{2} \times \frac{1}{2}$
STRINGER ANGLES $6 \times 4 \times \frac{1}{2}$ TO 20
DOUBLE CURVEN $2\frac{1}{2} \times 1$ ON FACE
 20 FOR 1/2 LENGTH & TO 20 AT ENDS

BULB 10×20 AT ENDS
INTERCOSTAL PLATES 20 THIN
FOR 1/2 LENGTH &
INTERCOSTAL ANGLES $3\frac{1}{2} \times 3\frac{1}{2} \times \frac{1}{2}$
STRINGER ANGLES $6 \times 4 \times \frac{1}{2}$ TO 20

$8 \times 3 \times \frac{1}{2}$ Slip
 $3\frac{1}{2} \times 3\frac{1}{2} \times \frac{1}{2}$
 20 FOR 1/2 LENGTH & TO 20 FOR 1/2 LENGTH & AT ENDS

RIDER PLATE FOR 1/2 LENGTH
VERTICAL $6 \times 4 \times \frac{1}{2}$ AT ENDS
ANGLES $6 \times 4 \times \frac{1}{2}$ TO 20 AT ENDS

WELSON ANGLE $6 \times 4 \times \frac{1}{2}$ TO 20

CEILING $2\frac{1}{2}$

INTERCOSTAL PLATE 20 THIN
ANGLE $3\frac{1}{2} \times 3\frac{1}{2} \times \frac{1}{2}$ AT ENDS

BUTTS OF THIS STRAKE TRIPLE RIVETED
FOR 1/2 LENGTH & STRAPS $\frac{1}{2}$ " THICKER THAN
THE PLATES THEY CONNECT FOR 1/2 LENGTH DOUBLE
STRAPS $\frac{1}{2}$ " THICKER

$\frac{1}{2}$ FOR 1/2 LENGTH & TO 20 AT ENDS

$\frac{1}{2}$ FOR 1/2 LENGTH & TO 20 FOR 1/2 LENGTH & AT ENDS

16×20 TO 20 AT ENDS

Segel Schiff. Paul

Hamburg Report Nr. 15075

Bre 679

Letter H. 6 March 1922

Is he returned



© 2020

Lloyd's Register
Foundation

2