

s/s "Clan Mackay"  
Brus Rept. No. 6311.

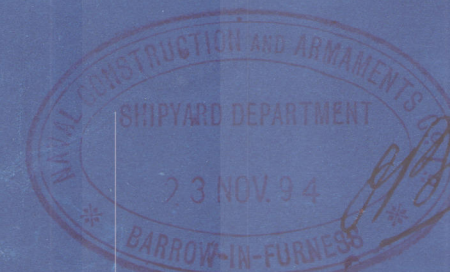
NOS 227-849.

312 B.P. x 400 x 26-2 MLD

MIDSHIP SECTION.

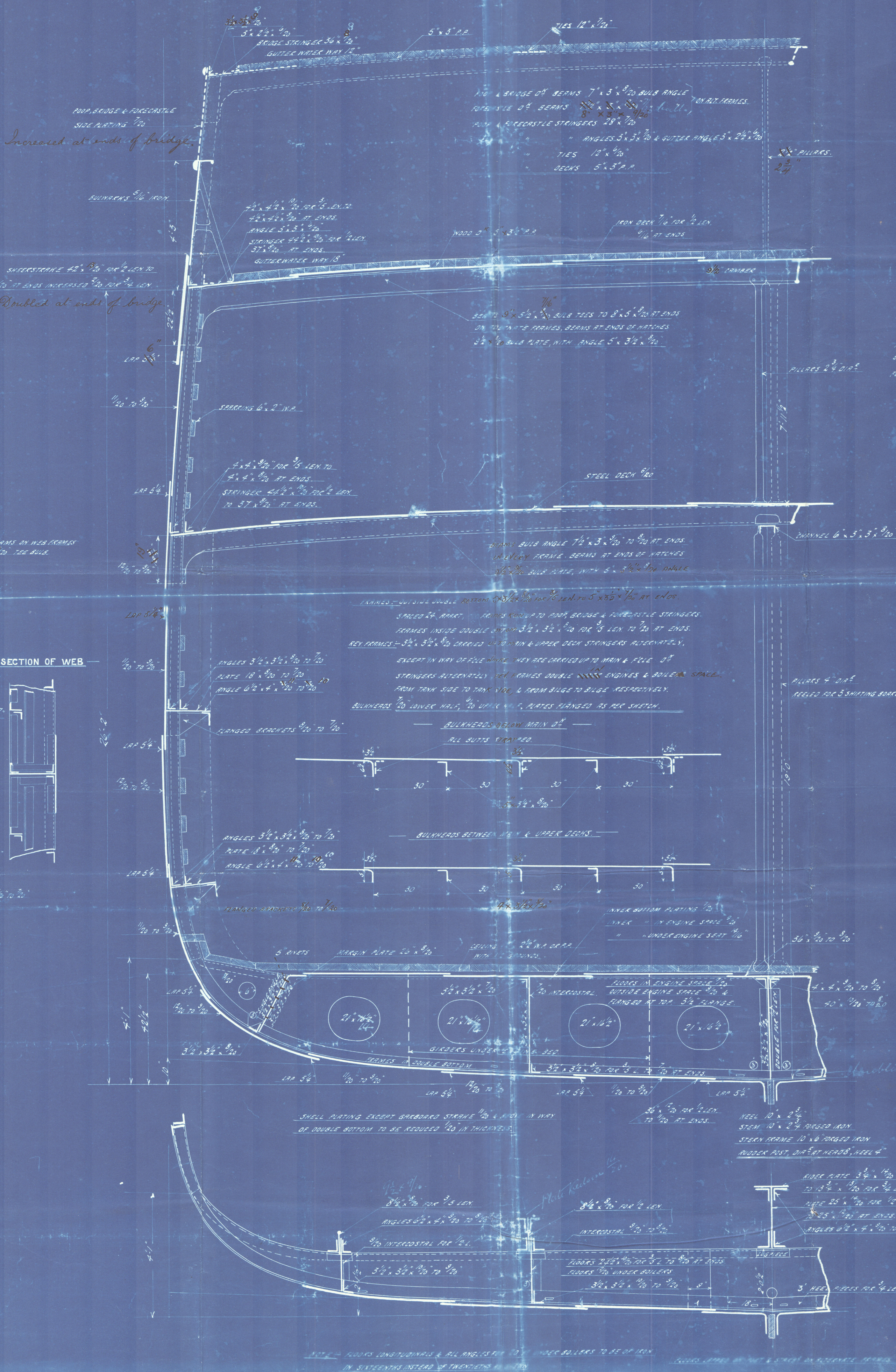
CLASS 100 A1 AT LLOYDS 3 DECK RULE STEEL.

SCALE 1/2 INCH = ONE FOOT.



15245  
20/11/94

*Longitudinal Section  
30.11.93*



LLOYDS NUMERALS

1/2 GIRTH	42.87
1/2 BREADTH	20.00
DEPTH	26.86
	88.85
	7.00
1st NUMBER	82.83
2nd NUMBER	310.53
3rd NUMBER	25704.63

EQUIPMENT NUMBERS

310.53	7.70	SEAMS
410.53	11.81	SEAMS
510.53	16.80	SEAMS
610.53	21.79	SEAMS
710.53	26.78	SEAMS
810.53	31.77	SEAMS
910.53	36.76	SEAMS
1010.53	41.75	SEAMS
1110.53	46.74	SEAMS
1210.53	51.73	SEAMS
1310.53	56.72	SEAMS
1410.53	61.71	SEAMS
1510.53	66.70	SEAMS
1610.53	71.69	SEAMS
1710.53	76.68	SEAMS
1810.53	81.67	SEAMS
1910.53	86.66	SEAMS
2010.53	91.65	SEAMS
2110.53	96.64	SEAMS
2210.53	101.63	SEAMS
2310.53	106.62	SEAMS
2410.53	111.61	SEAMS
2510.53	116.60	SEAMS
2610.53	121.59	SEAMS
2710.53	126.58	SEAMS
2810.53	131.57	SEAMS
2910.53	136.56	SEAMS
3010.53	141.55	SEAMS
3110.53	146.54	SEAMS
3210.53	151.53	SEAMS
3310.53	156.52	SEAMS
3410.53	161.51	SEAMS
3510.53	166.50	SEAMS
3610.53	171.49	SEAMS
3710.53	176.48	SEAMS
3810.53	181.47	SEAMS
3910.53	186.46	SEAMS
4010.53	191.45	SEAMS
4110.53	196.44	SEAMS
4210.53	201.43	SEAMS
4310.53	206.42	SEAMS
4410.53	211.41	SEAMS
4510.53	216.40	SEAMS
4610.53	221.39	SEAMS
4710.53	226.38	SEAMS
4810.53	231.37	SEAMS
4910.53	236.36	SEAMS
5010.53	241.35	SEAMS
5110.53	246.34	SEAMS
5210.53	251.33	SEAMS
5310.53	256.32	SEAMS
5410.53	261.31	SEAMS
5510.53	266.30	SEAMS
5610.53	271.29	SEAMS
5710.53	276.28	SEAMS
5810.53	281.27	SEAMS
5910.53	286.26	SEAMS
6010.53	291.25	SEAMS
6110.53	296.24	SEAMS
6210.53	301.23	SEAMS
6310.53	306.22	SEAMS
6410.53	311.21	SEAMS
6510.53	316.20	SEAMS
6610.53	321.19	SEAMS
6710.53	326.18	SEAMS
6810.53	331.17	SEAMS
6910.53	336.16	SEAMS
7010.53	341.15	SEAMS
7110.53	346.14	SEAMS
7210.53	351.13	SEAMS
7310.53	356.12	SEAMS
7410.53	361.11	SEAMS
7510.53	366.10	SEAMS
7610.53	371.09	SEAMS
7710.53	376.08	SEAMS
7810.53	381.07	SEAMS
7910.53	386.06	SEAMS
8010.53	391.05	SEAMS
8110.53	396.04	SEAMS
8210.53	401.03	SEAMS
8310.53	406.02	SEAMS
8410.53	411.01	SEAMS
8510.53	416.00	SEAMS
8610.53	421.00	SEAMS
8710.53	426.00	SEAMS
8810.53	431.00	SEAMS
8910.53	436.00	SEAMS
9010.53	441.00	SEAMS
9110.53	446.00	SEAMS
9210.53	451.00	SEAMS
9310.53	456.00	SEAMS
9410.53	461.00	SEAMS
9510.53	466.00	SEAMS
9610.53	471.00	SEAMS
9710.53	476.00	SEAMS
9810.53	481.00	SEAMS
9910.53	486.00	SEAMS
10010.53	491.00	SEAMS

EQUIPMENT

28' 0"	80.83 x 310.53	= 27876.84
31' 0"	127.8	
38' 0"	310.53 x 3484.6	= 1435.0
107' 8"		28311.84

EQUIPMENT

1 BOW ANCHOR	34 INT. EX. STOCK
1	32 1/2
1	30 1/2
1 STREAM	10 1/2
1 KEEG	5 1/2
240 FATHOMS 1 1/2" STUD CHAIN CABLE	
75 FATHOMS 1 1/2" STREAM CABLE	
30	6" STEEL WIRE TONING
30	3" HANGER
30	2 1/2" HANGER

**RIVETING**

UPPER ST. STRINGER BUTTS, TREBLE RIV. FOR 1/2 LEN. & DOUBLE RIV. AT ENDS, TO HAVE DOUBLE STOPS FOR 1/2 LEN. REMAINDER SINGLE STOPS TO THICKER THAN PLATES THEY CONNECT. MAIN ST. STRINGER BUTTS, LAPPED & TREBLE RIV. FOR 1/2 LEN. & DOUBLE RIV. AT ENDS.

UPPER & MAIN ST. PLATING BUTTS, LAPPED & DOUBLE RIV. FOR 1/2 LEN. & SINGLE RIV. AT ENDS.

UPPER & MAIN ST. PLATING SEAMS, SINGLE RIV. ALL AFT. & AFT. SHEER STOPS & GABBOARD STOPS, TREBLE RIV. FOR 1/2 LEN. & DOUBLE RIV. AT ENDS, STOPS TO THICKER THAN PLATES THEY CONNECT. REMAINDER OF STOPS TO THICKER THAN PLATES THEY CONNECT.

REMAINDER OF SHELL BUTTS, FROM GABBOARD STOPS TO STOPS BELOW SHEER STOPS, WITHIN 1/2" LAPPED & QUADRUPLE RIV. WHERE OUTSIDE & INSIDE STOPS EXCEED 40" & 40" WIDE RESPECTIVELY, REMAINDER LAPPED & TREBLE RIV.

PODS, BRIDGE & FLE. SIDE PLATING & STRINGER BUTTS, LAPPED & DOUBLE RIV. CENTRE PLATING & UPPER PLATE BUTTS, LAPPED & TREBLE RIV.

TANK TOP PLATING, BUTTS & SEAMS OF MIDDLE LINE STOPS TO BE DOUBLE RIV. ALL AFT. & AFT. REMAINDER OF TANK TOP PLATING SEAMS, SINGLE RIV. BUTTS, DOUBLE RIV. FOR 1/2 LEN. & SINGLE RIV. AT ENDS.

TANK SIDE BUTTS, LAPPED & DOUBLE RIV. ALL AFT. & AFT.

*Location of Stems of Hull Plating  
to be in accordance with the Rules*



Bh. "Iranian"  
Barrow. 643.



© 2020

Lloyd's Register  
Foundation