

N^{os} 227-3-9

312 B.P. x 40 0' x 26 2' M.L.

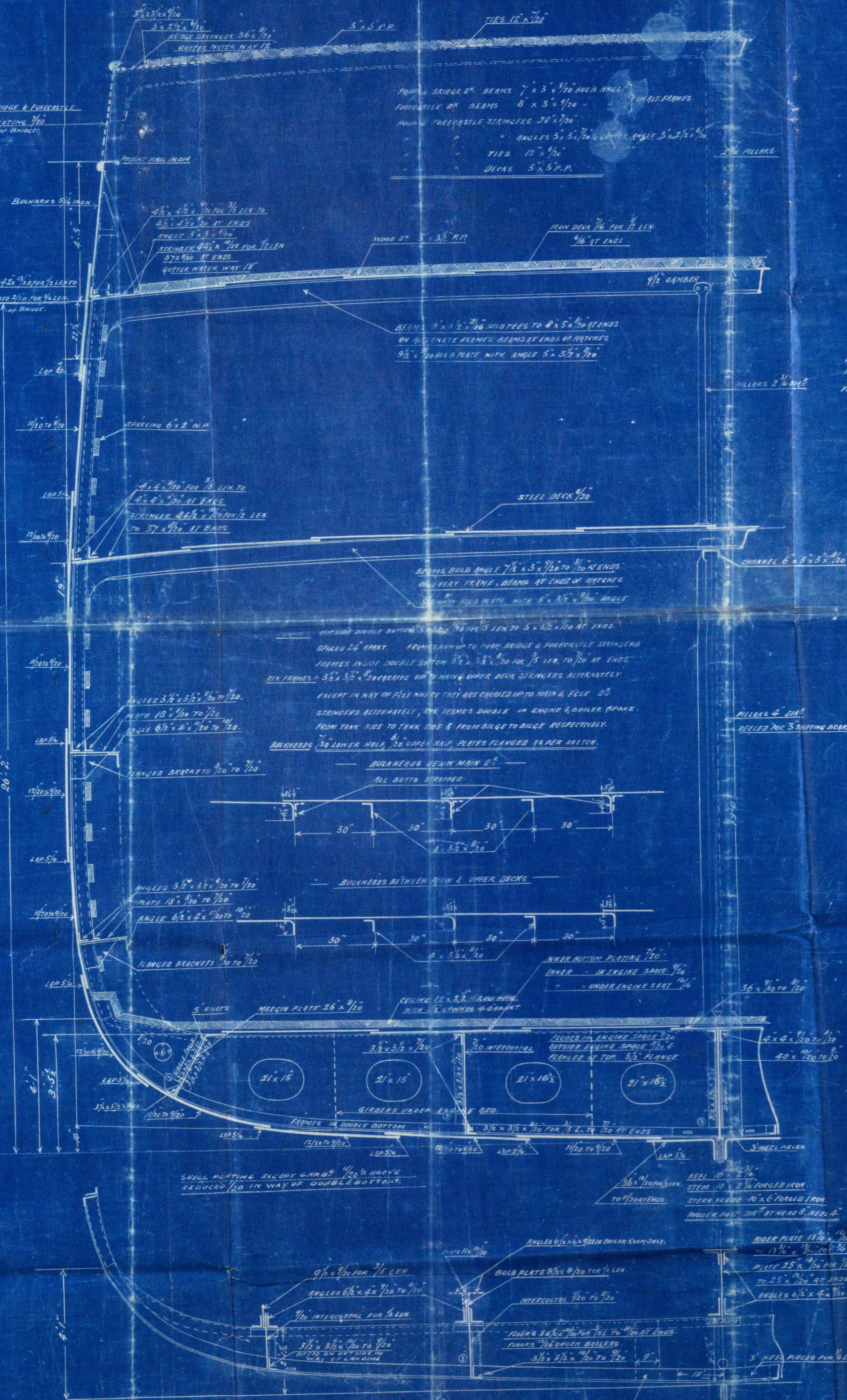
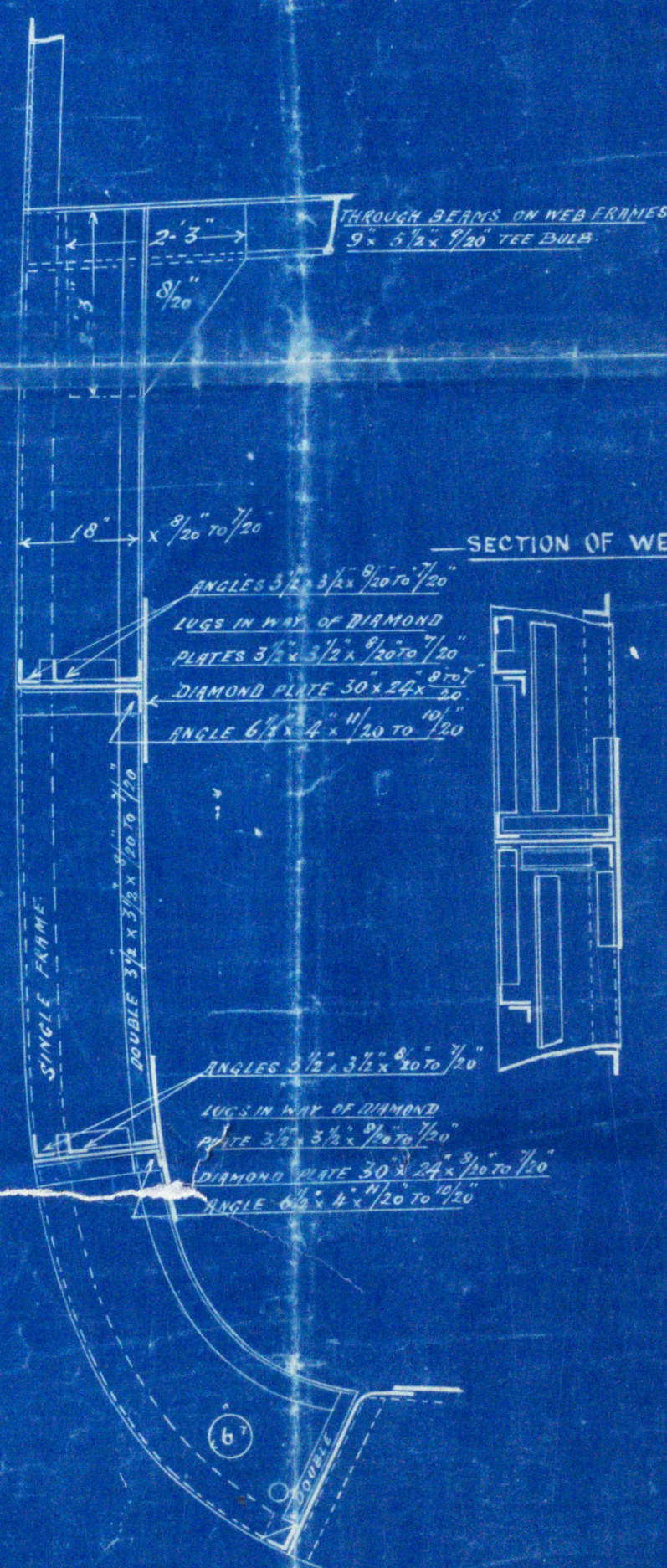
MIDSHIP SECTION.

CLASS 100 ALAT LLOYDS 3 DECK RULE STEEL.

SCALE 1/2 INCH = ONE FOOT.

For Strains of Shell Plating see this Section

SECTION IN WAY OF WEB FRAMES
SPACED 6 FRAME SPACES APART



LLOYDS NUMERALS

1/2 GIRTH	48.84
1/2 BREADTH	20.00
BIRTH	26.86
84.83	
1/2 NUMBER	84.83
310.33	310.33
2 nd NUMBER	150.83

310.33	=	7.74 BEAMS
310.33	=	11.51 DEPTHS TO UPPER DE
310.33	=	16.33 DEPTHS TO MAIN DE
19.00		

EQUIPMENT NUMBERS

POOD	28.0	89.83 x 310.33	=	27876.94
ROOF	61.8	127.8		
FORECASTLE	38.0	310.33 x 310.33	=	1635.0
	127.8			29311.94

EQUIPMENT

1 BOWER ANCHOR	34 CHITEN STOCK
1 "	32 1/2 "
1 "	30 1/2 "
1 STEAM	10 1/2 "
1 RESER	5 1/2 "
200 PATRONS	1 1/2 " STUB CHAINABLE
75 PATRONS	1 1/2 " STREAM CHAIN
100	2 " STEEL WIRE ROPING
80	3 1/2 " "
90	2 1/2 " "

RIVETING

UPPER DE STRIPPER BUTTS TRIPLE RIV FOR 1/2 LEN 30.
DOUBLE RIV AT ENDS, TO HAVE DOUBLE STRAPS FOR 1/2 LEN.
REMAINDER SINGLE STRAPS 70 THICKER THAN PLATES THEY CONNECT.
RIV OF STRIPPER BUTTS LAPPED & TRIPLE RIV FOR 1/2 LEN.
DOUBLE RIV AT ENDS.
UPPER DE MAIN DE PLATING 20 THICK LAPPED & DOUBLE RIV FOR 1/2 LEN. 30. DOUBLE AT ENDS.
UPPER DE MAIN DE PLATING SINGLE RIV ALL POINTS & RIV. SHEET STRIPS & BULKHEAD STRIPS TRIPLE RIV FOR 1/2 LEN 30.
DOUBLE RIV AT ENDS. STRIPS OUTWICKER FOR 1/2 LEN. REMAINDER OF STRIPS 70 THICKER THAN PLATES THEY CONNECT.
REMAINDER OF SHEET BUTTS FROM GUNWARD STAKE TO STAKE BELOW SHEET STAKE WITHIN 1/2 L. LAPPED & QUADRUPLE RIV. WHERE OUTSIDE & INSIDE STRIPS EXCEED 40 & 48 WIDE. RESPECTIVELY, REMAINDER LAPPED & TRIPLE RIV.
POOD BRIDGE & FORECASTLE LAMINATION CORNER BUTTS DOUBLE RIV. CENTRE ALLISON & BULK PLATE BUTTS LAPPED & TRIPLE RIV. TANK TOP PLATING BUTTS & STRIPS OF DOUBLE END STRAPS TO BE DOUBLE RIV ALL FOR & RIV. REMAINDER OF TANK TOP PLATING STRIPS SINGLE RIV. BUTTS DOUBLE RIV FOR 1/2 LEN 30. SINGLE AT ENDS.
TANK SIDE BUTTS LAPPED & DOUBLE RIV ALL FOR & RIV. POOD BRIDGE & FORECASTLE STRIPPER STRIPPED BUTTS DOUBLE RIV.

Ll^yClaw Mach.
Brow. 631.



© 2020

Lloyd's Register
Foundation