

S. S. Glen Ross
Brew Rept No 607

2/2/43

S. S. N^{OS} 227-8-9.

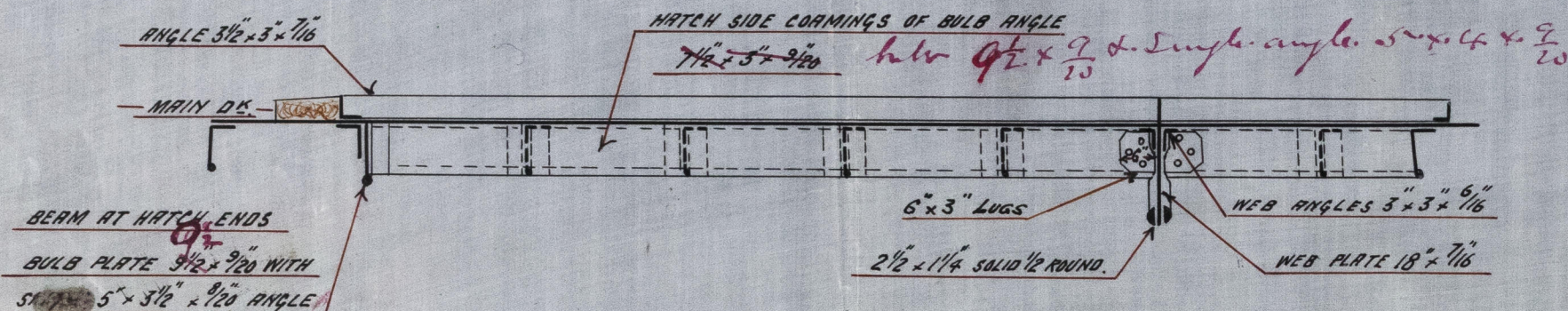
PLAN SHEWING CONSTRUCTION AND STIFFENING OF CARGO HATCHES

ON MAIN DECK



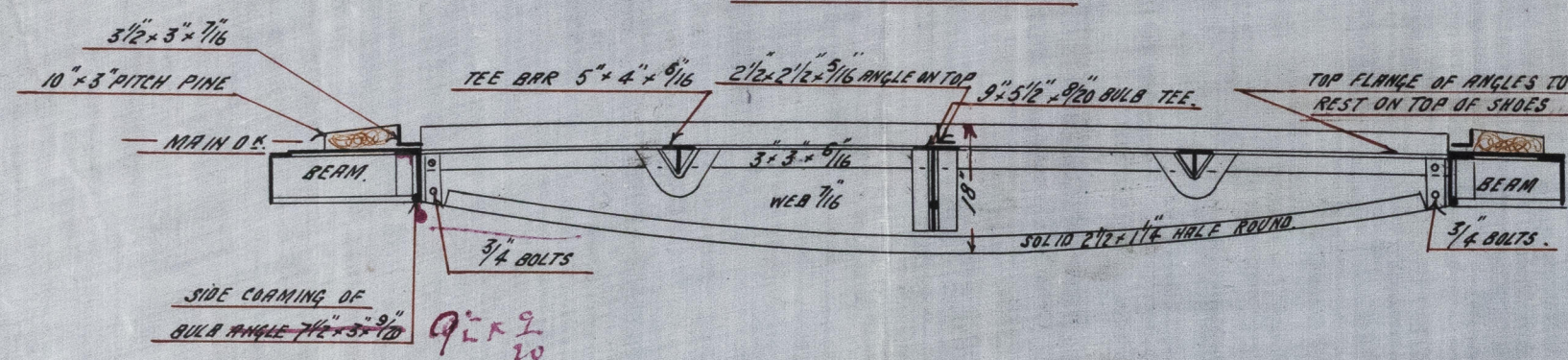
- PART LONGITUDINAL SECTION THRO' HATCHES NOS 1, 4 + 5.

SCALE $\frac{1}{2}$ IN. = ONE FOOT.



ATHWARTSHIP SECTION THRO' HATCHES NOS 1, 4 + 5. —

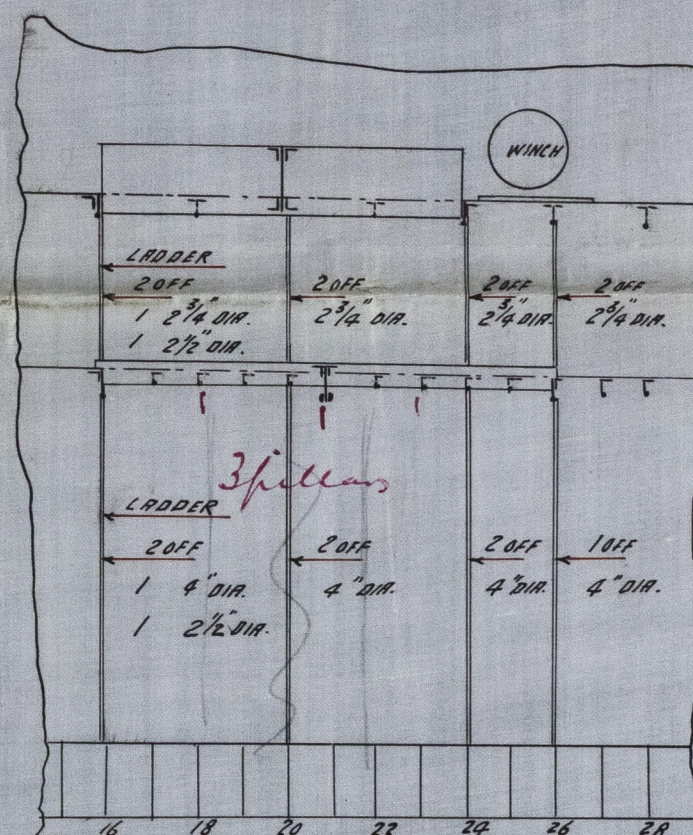
SCALE $\frac{1}{2}$ IN. = ONE FOOT.



— ELEVATION OF HATCHES NOS 4 + 5

— SHEWING PILLARING.

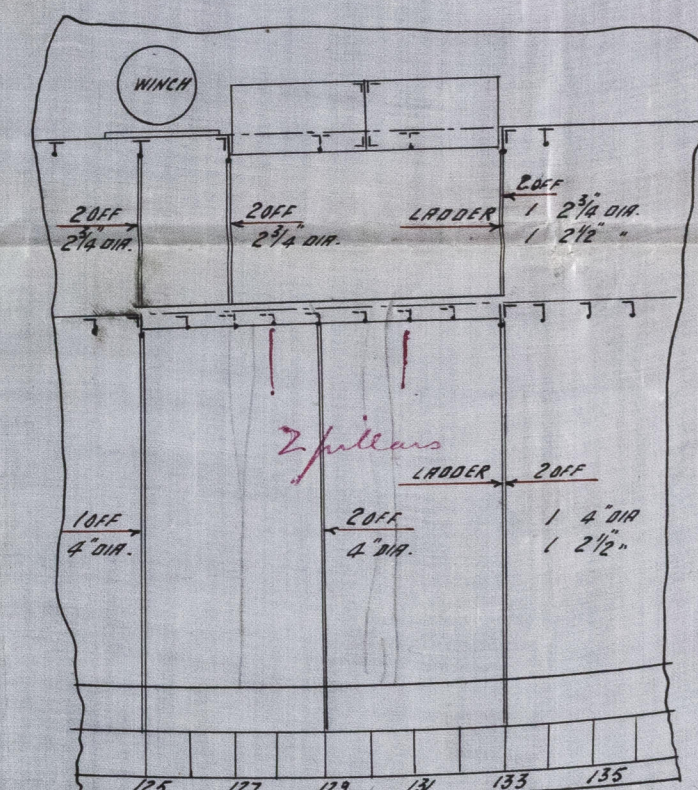
SCALE $\frac{1}{8}$ INCH = ONE FOOT.



— ELEVATION OF HATCH N^o 1

— SHEWING PILLARING

— SCALE $\frac{1}{8}$ IN. = ONE FOOT.



J.V.L.
22/12/93

W. L. Blum
 1001 7/10 100

Naval Co.
 No. 227, 228 & 229

BLW43-0065

22.12.23

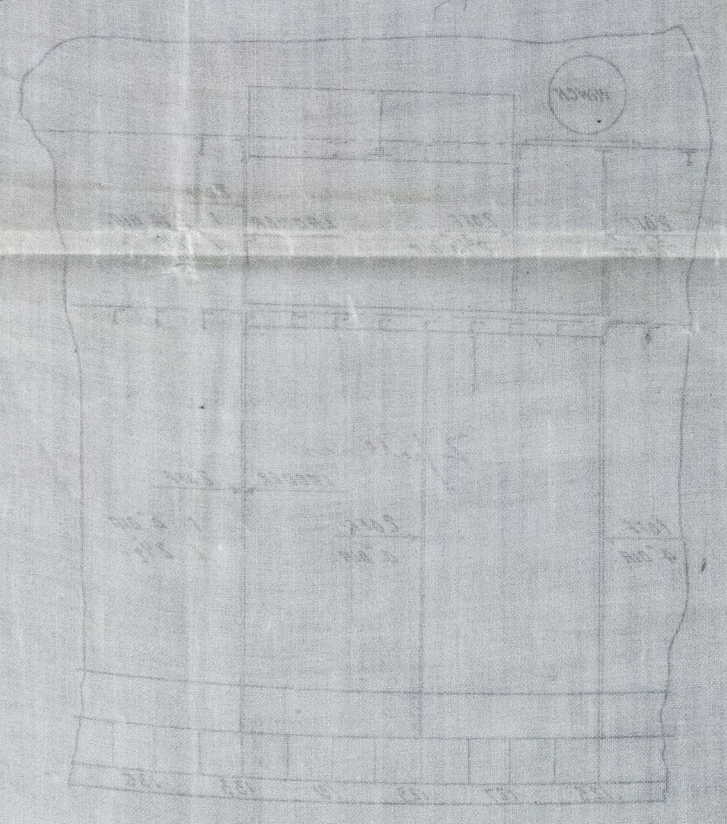


8-8-23

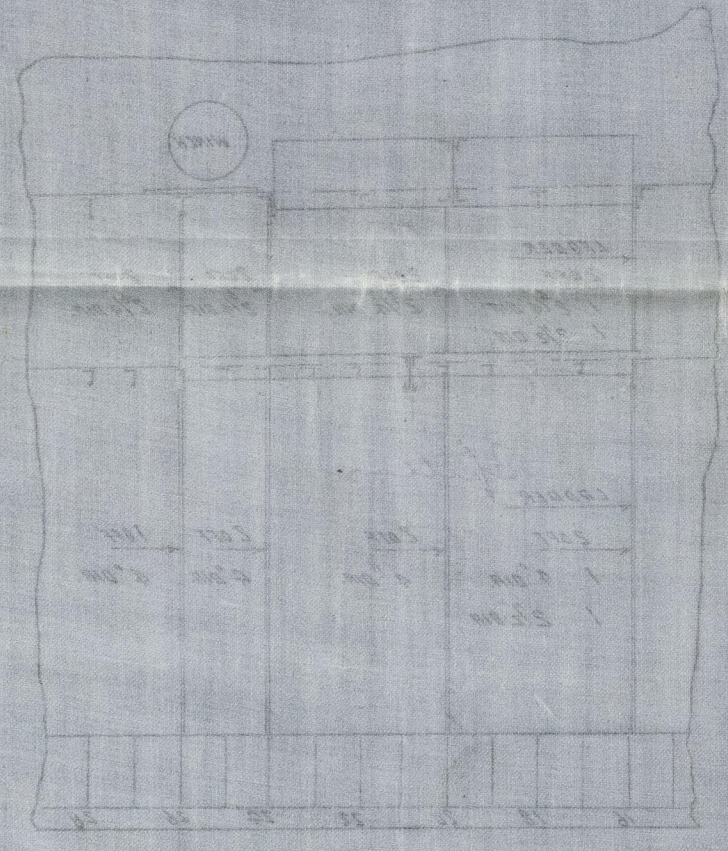
PLAN SHEWING CONSTRUCTION OF STEERING CARGO HATCHES

ON MAIN DECK

PLAN OF HATCH NO. 1
 SHOWING
 STEERING CARGO HATCH

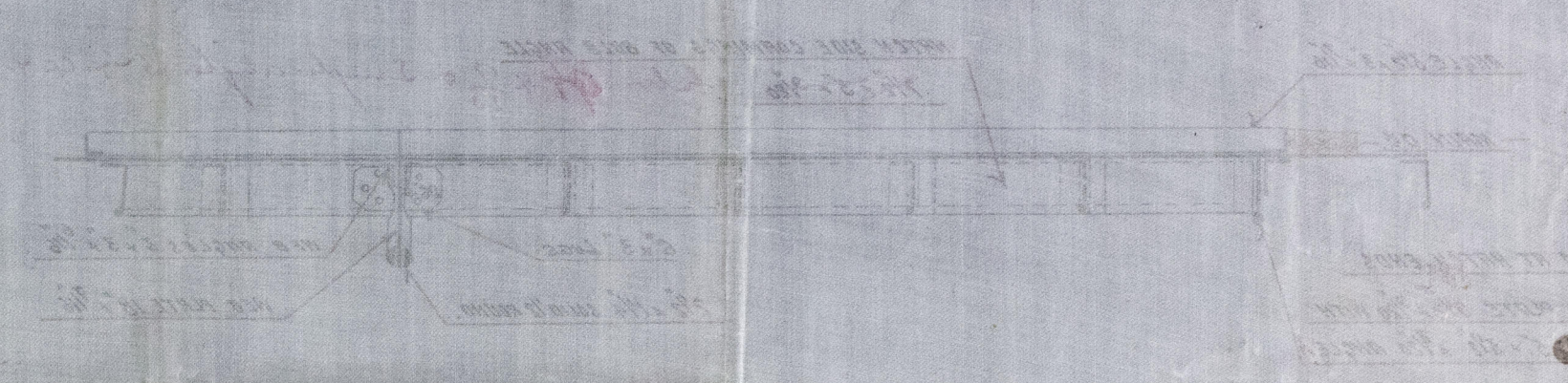


PLAN OF HATCH NO. 2
 SHOWING
 STEERING CARGO HATCH



W. L. Blum
 1001 7/10 100

PLAN OF HATCH NO. 3
 SHOWING
 STEERING CARGO HATCH



PLAN OF HATCH NO. 4
 SHOWING
 STEERING CARGO HATCH

