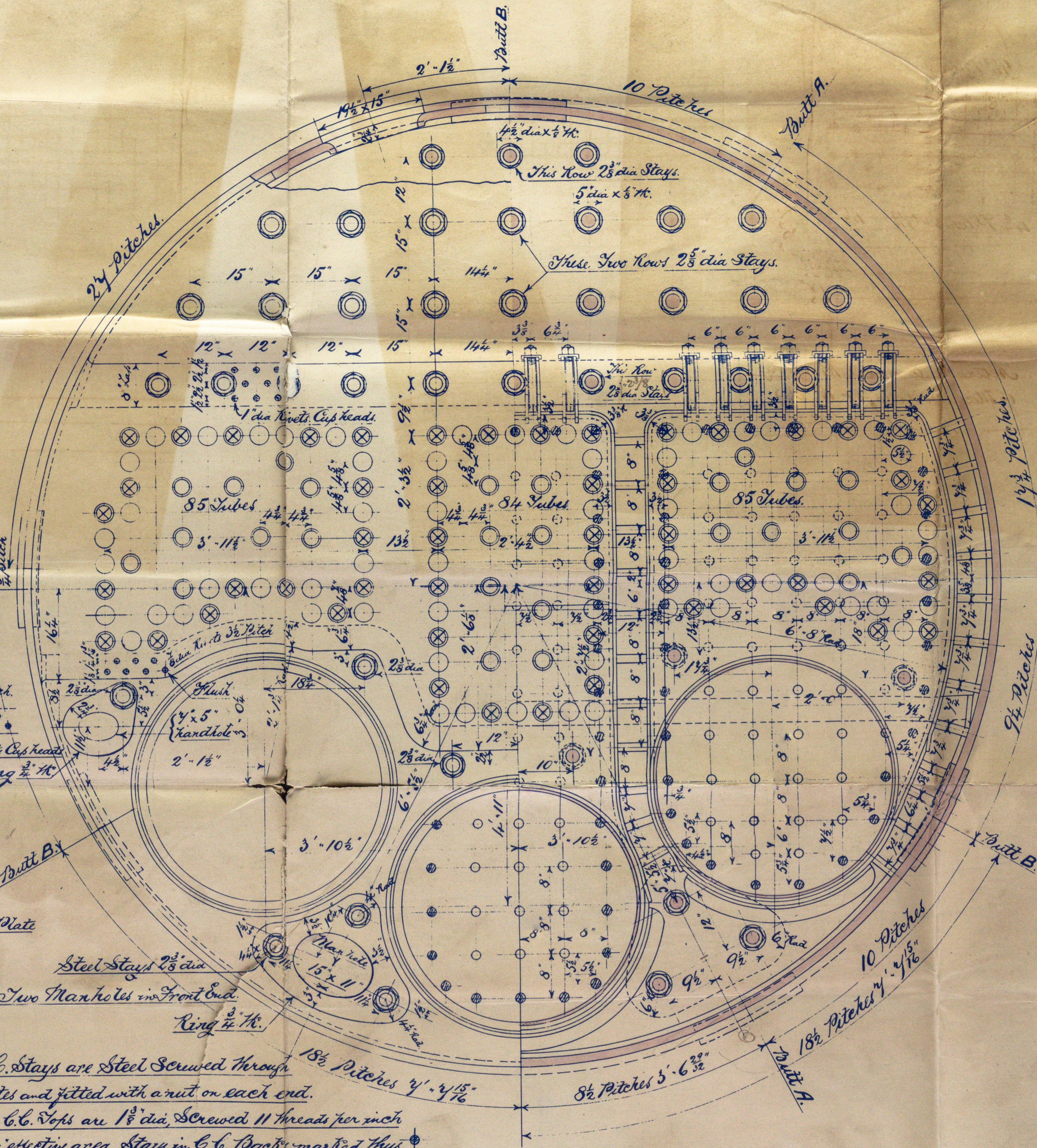


MA.
Priv. 6/6/92.

A circular purple ink stamp from Lloyd's Register of Shipping, London. The text "LLOYD'S REGISTER OF SHIPPING" is curved along the top inner edge, and "LONDON" is curved along the bottom inner edge. In the center, the date "7 JUN. 92" is printed vertically.



Heating Surface, etc.	one boiler.	2 Boilers.
Tubes $3\frac{1}{2}$ int dia x $4' \cdot 3"$ Long =	1684 $\cdot 34$ #	334 $\cdot 4 \cdot 4 \cdot 4$ #
Corrugated Furnaces =	194 $\cdot 42$ "	389 $\cdot 44$ "
Combustion Chambers =	233 $\cdot 98$ "	464 $\cdot 96$ "
Total Heating Surface =	2116 $\cdot 04$ #	4232 $\cdot 14$ #
Surface, $3' \cdot 8\frac{3}{4}"$ x $6' \cdot 0"$ Bars =	64 $\cdot 14$ #	134 $\cdot 28$ #
Area Through Tubes. =	12 $\cdot 48$ #	24 $\cdot 96$ #
Net Area ($6' \cdot 0$ dia - $1' \cdot 10$ dia) =	25 $\cdot 63$ # nett.	
of Bar Surface to Heating Surface $\frac{51}{51}$		
of Area thro Tubes to Bar Surface $\frac{1}{3 \cdot 34}$		

MAIN BOILERS FOR №218.

SCALE 1"=1 FOOT.

- Actual Working Pressure 160 lbs per sq. in. -

счл.
7. 1.9

97

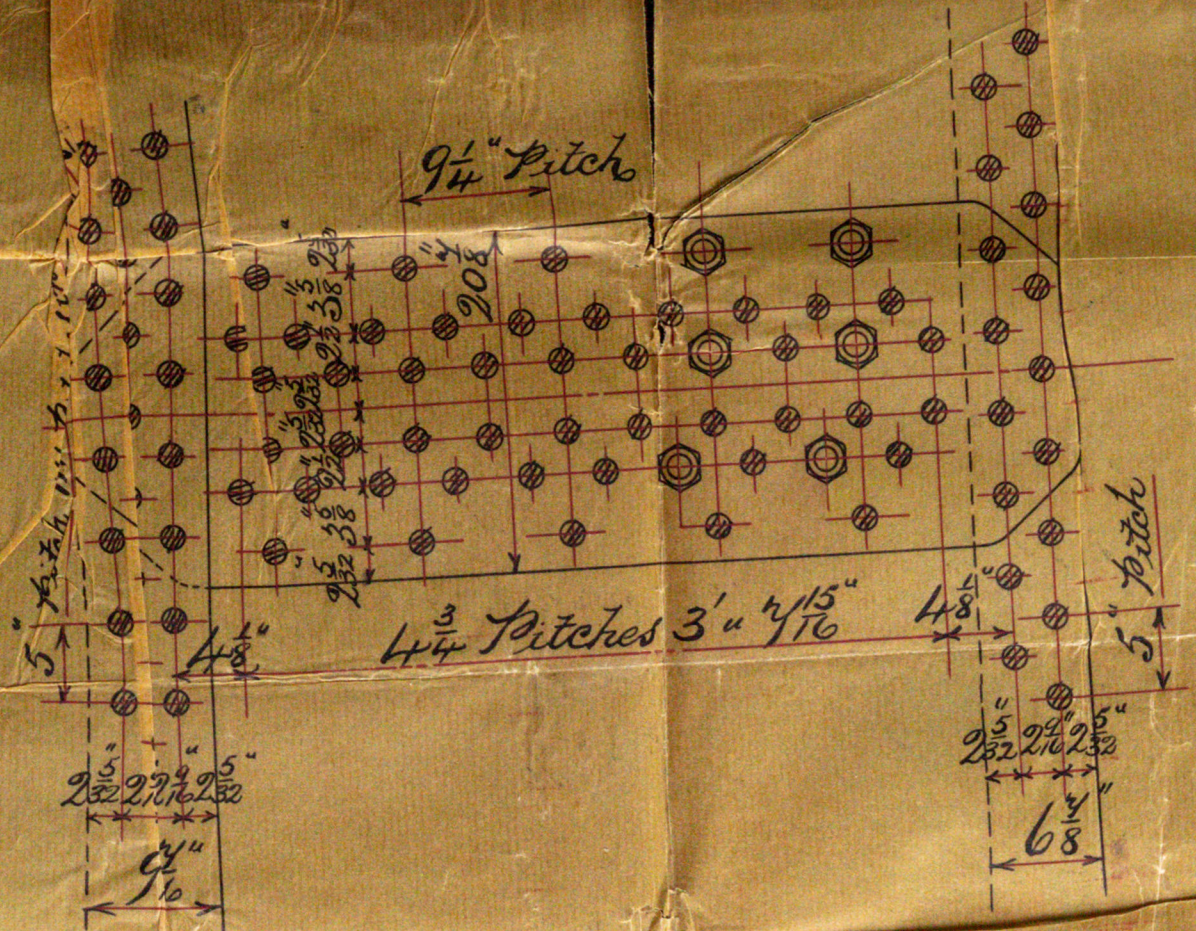
NAVAL CONSTRUCTION AND ARMAMENT
ENGINE DEPARTMENT
Log. No. _____
- 5 JUN. -
BARRROW-IN-FURNESS

[Handwritten signature]

BRW42-0101(1/2)

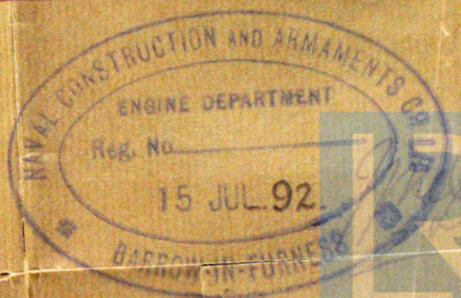
Shell riveting.

Holes	Shell $1\frac{1}{16}$ " dia.
Ports	$\frac{13}{32}$ " dia. Mild Steel.
Shell Plates	$\frac{13}{32}$ " th. Buttraps $\frac{1}{8}$ " th.
Three Plates in Circumference.	
Longitud ^l Seams	Plate = 84.45%
	Rivets = 89.64%
Circumf ^l Seams	Plate = 41.25%
	Rivets = 56.84%



Working pressure 180 lbs per sq"

Alteration to Shell Riveting
of Main Boilers for W 218.
Scale 1" = 1 foot.



A B & A Co

No 218

Main Boilers

Brw Rpt-No 529

"¹⁶Wreager Brackets"¹¹

BRW42-0101 (3/2)



© 2019

Lloyd's Register
Foundation