

S. S. No. 215.

DEFLECTION OF OILTIGHT BULKHEADS.

TAKEN DURING TESTING.

TRANSVERSE BULKHEAD No. 115.

AT FORE END OF No. 4 COMPARTMENT.

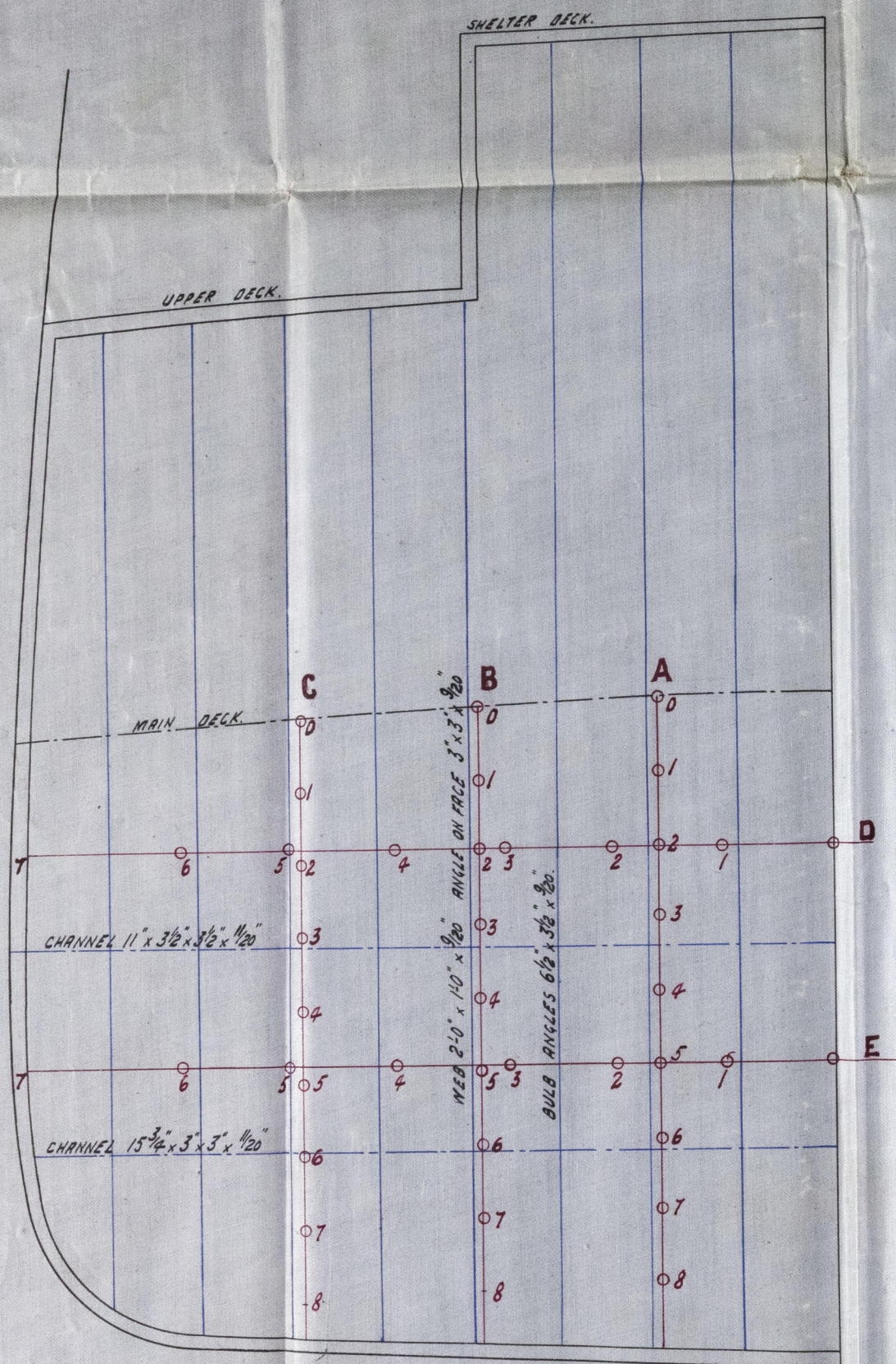
TABLE SHEWING READINGS & DEFLECTIONS.

No.	A.					B.					C.					D.					E.				
	EMPTY	FILLED	DEFLECT.	PRESSED	TOTAL DEFLECT.	EMPTY	FILLED	DEFLECT.	PRESSED	TOTAL DEFLECT.	EMPTY	FILLED	DEFLECT.	PRESSED	TOTAL DEFLECT.	EMPTY	FILLED	DEFLECT.	PRESSED	TOTAL DEFLECT.	EMPTY	FILLED	DEFLECT.	PRESSED	TOTAL DEFLECT.
0	18"	18"		18"		18 1/2"	18 1/2"		18"		18"	18"		18"		12"	12"		12"		12 1/2"	12 1/2"		12 1/2"	
1	18 1/2"	18"	1/2"	17 1/2"	1/2"	17 1/2"	17 1/2"	1/2"	17 1/2"	1/2"	17 1/2"	17 1/2"	1/2"	17 1/2"	1/2"	12 1/2"	12 1/2"	1/2"	12 1/2"	1/2"	12 1/2"	12 1/2"	1/2"	12 1/2"	1/2"
2	17 1/2"	17 1/2"	1/2"	17 1/2"	1/2"	18"	18"	1/2"	18"	1/2"	17 1/2"	17 1/2"	1/2"	17 1/2"	1/2"	12 1/2"	12 1/2"	1/2"	12 1/2"	1/2"	12 1/2"	12 1/2"	1/2"	12 1/2"	1/2"
3	17 1/2"	17 1/2"	1/2"	17 1/2"	1/2"	17 1/2"	17 1/2"	1/2"	17 1/2"	1/2"	17 1/2"	17 1/2"	1/2"	17 1/2"	1/2"	12 1/2"	12 1/2"	1/2"	12 1/2"	1/2"	12 1/2"	12 1/2"	1/2"	12 1/2"	1/2"
4	18 1/2"	17 1/2"	1/2"	17 1/2"	1/2"	18"	18"	1/2"	18"	1/2"	18 1/2"	18 1/2"	1/2"	18"	1/2"	12 1/2"	12 1/2"	1/2"	12 1/2"	1/2"	12 1/2"	12 1/2"	1/2"	12 1/2"	1/2"
5	17 1/2"	17 1/2"	1/2"	17 1/2"	1/2"	18 1/2"	18"	1/2"	18"	1/2"	17 1/2"	17 1/2"	1/2"	17 1/2"	1/2"	12 1/2"	12 1/2"	1/2"	12 1/2"	1/2"	12 1/2"	12 1/2"	1/2"	12 1/2"	1/2"
6	17 1/2"	17 1/2"	1/2"	17 1/2"	1/2"	18 1/2"	18 1/2"	1/2"	18 1/2"	1/2"	18 1/2"	18 1/2"	1/2"	18 1/2"	1/2"	12 1/2"	12 1/2"	1/2"	12 1/2"	1/2"	12 1/2"	12 1/2"	1/2"	12 1/2"	1/2"
7	17 1/2"	17 1/2"	1/2"	17 1/2"	1/2"	17 1/2"	17 1/2"	1/2"	17 1/2"	1/2"	18"	18"	1/2"	17 1/2"	1/2"	12 1/2"	12 1/2"	1/2"	12 1/2"	1/2"	12 1/2"	12 1/2"	1/2"	12 1/2"	1/2"
8	18"	17 1/2"	1/2"	17 1/2"	1/2"	18 1/2"	18 1/2"	1/2"	18 1/2"	1/2"	18"	18"	1/2"	18"	1/2"	12 1/2"	12 1/2"	1/2"	12 1/2"	1/2"	12 1/2"	12 1/2"	1/2"	12 1/2"	1/2"

READINGS IN BLACK WERE TAKEN WITH EMPTY TANK.

READINGS IN RED WERE TAKEN WITH WATER LEVEL 5'-6" BELOW SHELTER DECK HATCH.

READINGS IN BLUE WERE TAKEN WITH PRESSURE DUE TO HEAD OF WATER 5'-0" ABOVE SHELTER DECK.



SCALE 1/4 IN. = ONE FOOT.

TABLE SHEWING "RISE" OF UPPER DECK.

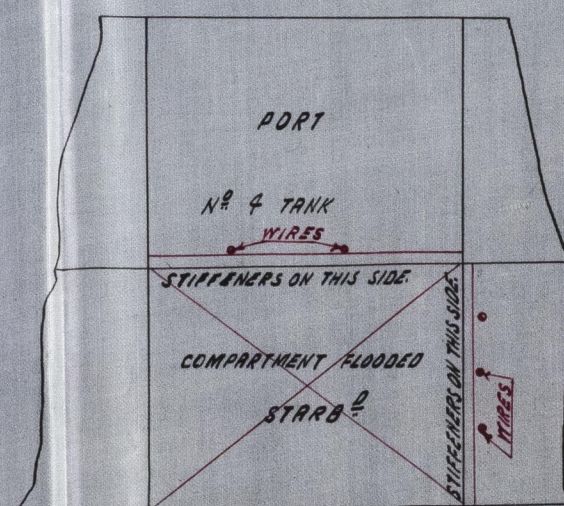
AT AFT END OF TRUNK No. 2 COMPARTMENT.

	STARBOARD					PORT				
	1	2	3	4	5	6	7	8	9	10
READING	15 1/2"	12"	9"	7 1/2"	6 1/2"	6 1/2"	6 1/2"	8 1/2"	10 1/2"	13 1/2"
READING	15 1/2"	12 1/2"	9 1/2"	8 1/2"	7 1/2"	7 1/2"	7 1/2"	9"	11 1/2"	14"
RISE OF DECK	3/8"	7/8"	1"	3/4"	5/8"	3/4"	15/16"	7/8"	7/16"	1/8"

READINGS TAKEN EVERY 4 FT. ON A THRESHOLD LINE.

READINGS IN BLACK WERE TAKEN WITH PRESSURE DUE TO HEAD OF WATER 3'-0" ABOVE SHELTER DECK.

READINGS IN RED WERE TAKEN AFTER TANKS WERE EMPTIED.



LONGITUDINAL BULKHEAD.

No. 4 COMPARTMENT.

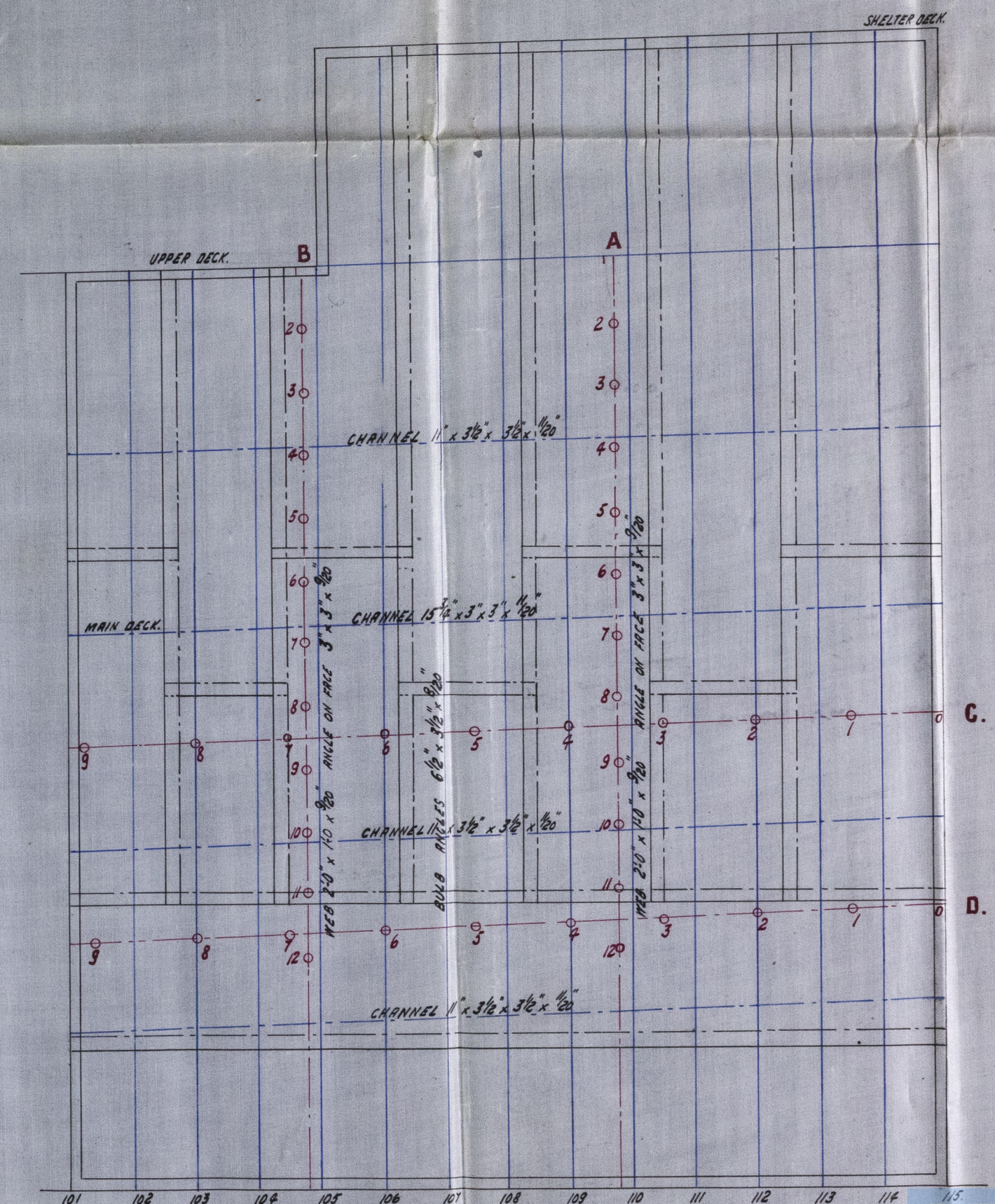
TABLE SHEWING READINGS & DEFLECTIONS.

No.	A.					B.					C.					D.				
	EMPTY	FILLED	DEFLECT.	PRESSED	TOTAL DEFLECT.	EMPTY	FILLED	DEFLECT.	PRESSED	TOTAL DEFLECT.	EMPTY	FILLED	DEFLECT.	PRESSED	TOTAL DEFLECT.	EMPTY	FILLED	DEFLECT.	PRESSED	TOTAL DEFLECT.
0											12"	12"		12"		12"	12"		12"	
1	17"	17"		17"		17"	17"		17"		12 1/2"	12 1/2"	1/2"	12 1/2"	1/2"	12 1/2"	12 1/2"	1/2"	12 1/2"	1/2"
2	17 1/2"	17"	1/2"	16 1/2"	1/2"	17 1/2"	17 1/2"	1/2"	17 1/2"	1/2"	12 1/2"	12 1/2"	1/2"	12 1/2"	1/2"	12 1/2"	12 1/2"	1/2"	12 1/2"	1/2"
3	17 1/2"	17"	1/2"	16 1/2"	1/2"	17 1/2"	17 1/2"	1/2"	17 1/2"	1/2"	12 1/2"	12 1/2"	1/2"	12 1/2"	1/2"	12 1/2"	12 1/2"	1/2"	12 1/2"	1/2"
4	17 1/2"	16 1/2"	1/2"	16 1/2"	1/2"	17"	16 1/2"	1/2"	16 1/2"	1/2"	12 1/2"	12 1/2"	1/2"	12 1/2"	1/2"	12 1/2"	12 1/2"	1/2"	12 1/2"	1/2"
5	17 1/2"	16 1/2"	1/2"	15 1/2"	1/2"	17 1/2"	17"	1/2"	16 1/2"	1/2"	12 1/2"	12 1/2"	1/2"	12 1/2"	1/2"	12 1/2"	12 1/2"	1/2"	12 1/2"	1/2"
6	16 1/2"	16 1/2"	1/2"	15 1/2"	1/2"	16 1/2"	16 1/2"	1/2"	15 1/2"	1/2"	12 1/2"	12 1/2"	1/2"	12 1/2"	1/2"	12 1/2"	12 1/2"	1/2"	12 1/2"	1/2"
7	17 1/2"	16 1/2"	1/2"	15 1/2"	1/2"	17 1/2"	16 1/2"	1/2"	16 1/2"	1/2"	12 1/2"	12 1/2"	1/2"	12 1/2"	1/2"	12 1/2"	12 1/2"	1/2"	12 1/2"	1/2"
8	17 1/2"	16 1/2"	1/2"	15 1/2"	1/2"	17 1/2"	16 1/2"	1/2"	16 1/2"	1/2"	12 1/2"	12 1/2"	1/2"	12 1/2"	1/2"	12 1/2"	12 1/2"	1/2"	12 1/2"	1/2"
9	17 1/2"	16 1/2"	1/2"	15 1/2"	1/2"	17"	16 1/2"	1/2"	16 1/2"	1/2"	12 1/2"	12 1/2"	1/2"	12 1/2"	1/2"	12 1/2"	12 1/2"	1/2"	12 1/2"	1/2"
10	17 1/2"	16 1/2"	1/2"	16 1/2"	1/2"	16 1/2"	16 1/2"	1/2"	16 1/2"	1/2"										
11	17 1/2"	17"	1/2"	16 1/2"	1/2"	16 1/2"	16 1/2"	1/2"	16 1/2"	1/2"										
12	16 1/2"	16 1/2"	1/2"	15 1/2"	1/2"	16 1/2"	16 1/2"	1/2"	15 1/2"	1/2"										
13																				

READINGS IN BLACK WERE TAKEN WITH EMPTY TANK.

READINGS IN RED WERE TAKEN WITH WATER LEVEL 4'-2" BELOW SHELTER DECK HATCH.

READINGS IN BLUE WERE TAKEN WITH PRESSURE DUE TO HEAD OF WATER 5'-0" ABOVE SHELTER DECK.



SCALE 1/4 IN. = ONE FOOT.